

REVISIONS		
DATE	NAME	LIC. NO.

SEE SHEET 218

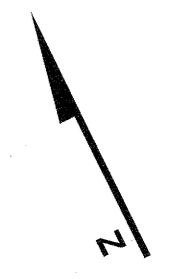
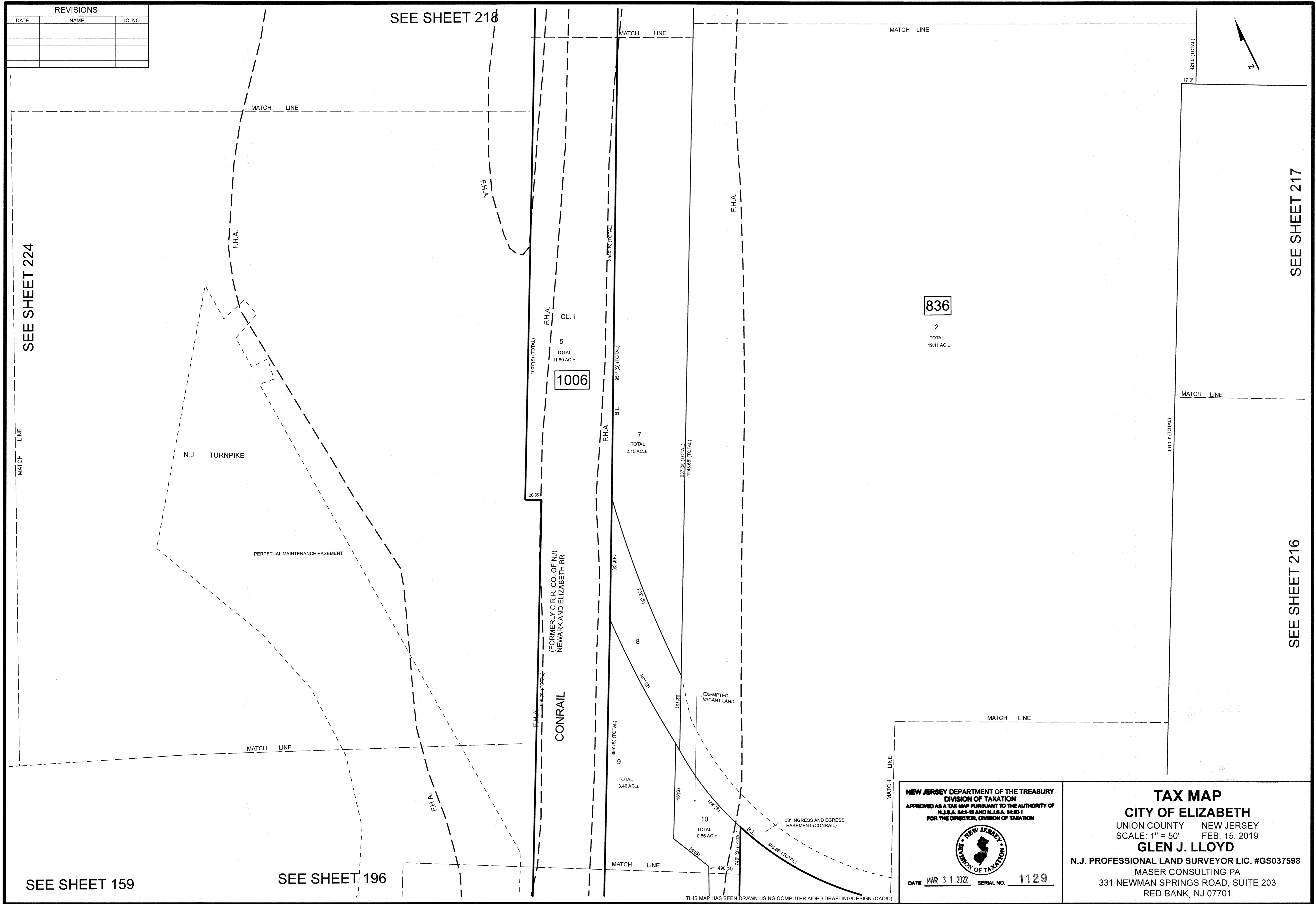
SEE SHEET 224

SEE SHEET 217

SEE SHEET 216

SEE SHEET 159

SEE SHEET 196



836

2

TOTAL  
19.11 AC±

1006

F.H.A. CL. 1

5

TOTAL  
11.59 AC±

7

TOTAL  
2.15 AC±

EXEMPTED  
VACANT LAND

10

TOTAL  
0.56 AC±

NEW JERSEY DEPARTMENT OF THE TREASURY  
DIVISION OF TAXATION  
APPROVED AS A TAX MAP PURSUANT TO THE AUTHORITY OF  
N.J.S.A. 54:1-16 AND N.J.S.A. 54:2-1  
FOR THE DIRECTOR, DIVISION OF TAXATION



DATE MAR 31 2022 SERIAL NO. 1129

**TAX MAP**  
**CITY OF ELIZABETH**  
 UNION COUNTY NEW JERSEY  
 SCALE: 1" = 50' FEB. 15, 2019  
**GLEN J. LLOYD**  
 N.J. PROFESSIONAL LAND SURVEYOR LIC. #GS037598  
 MASER CONSULTING PA  
 331 NEWMAN SPRINGS ROAD, SUITE 203  
 RED BANK, NJ 07701

THIS MAP HAS BEEN DRAWN USING COMPUTER AIDED DRAFTING/DESIGN (CAD/D)