

REVISIONS		
DATE	NAME	LIC. NO.

SEE SHEET 219

MATCH LINE

SEE SHEET 217

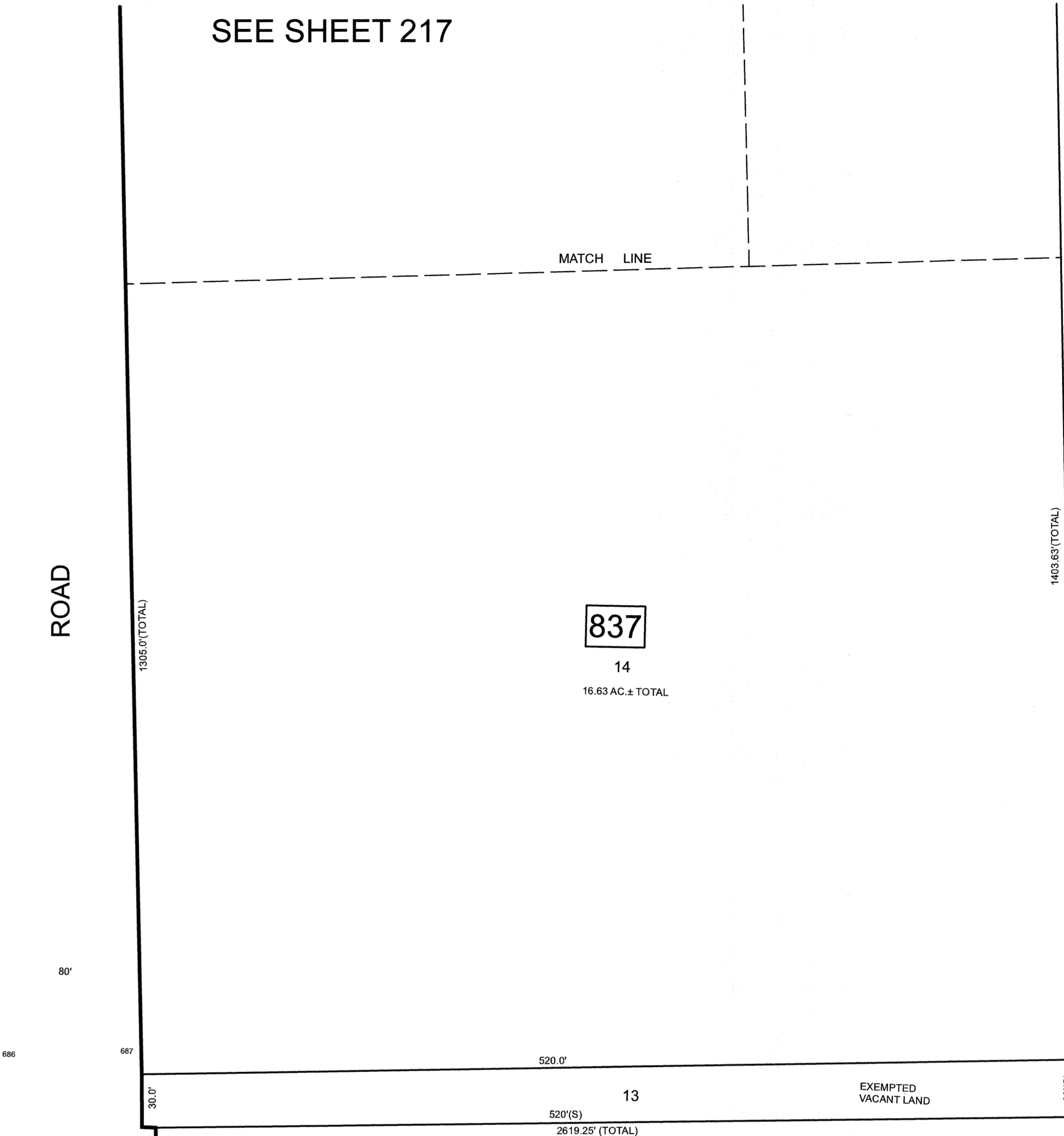
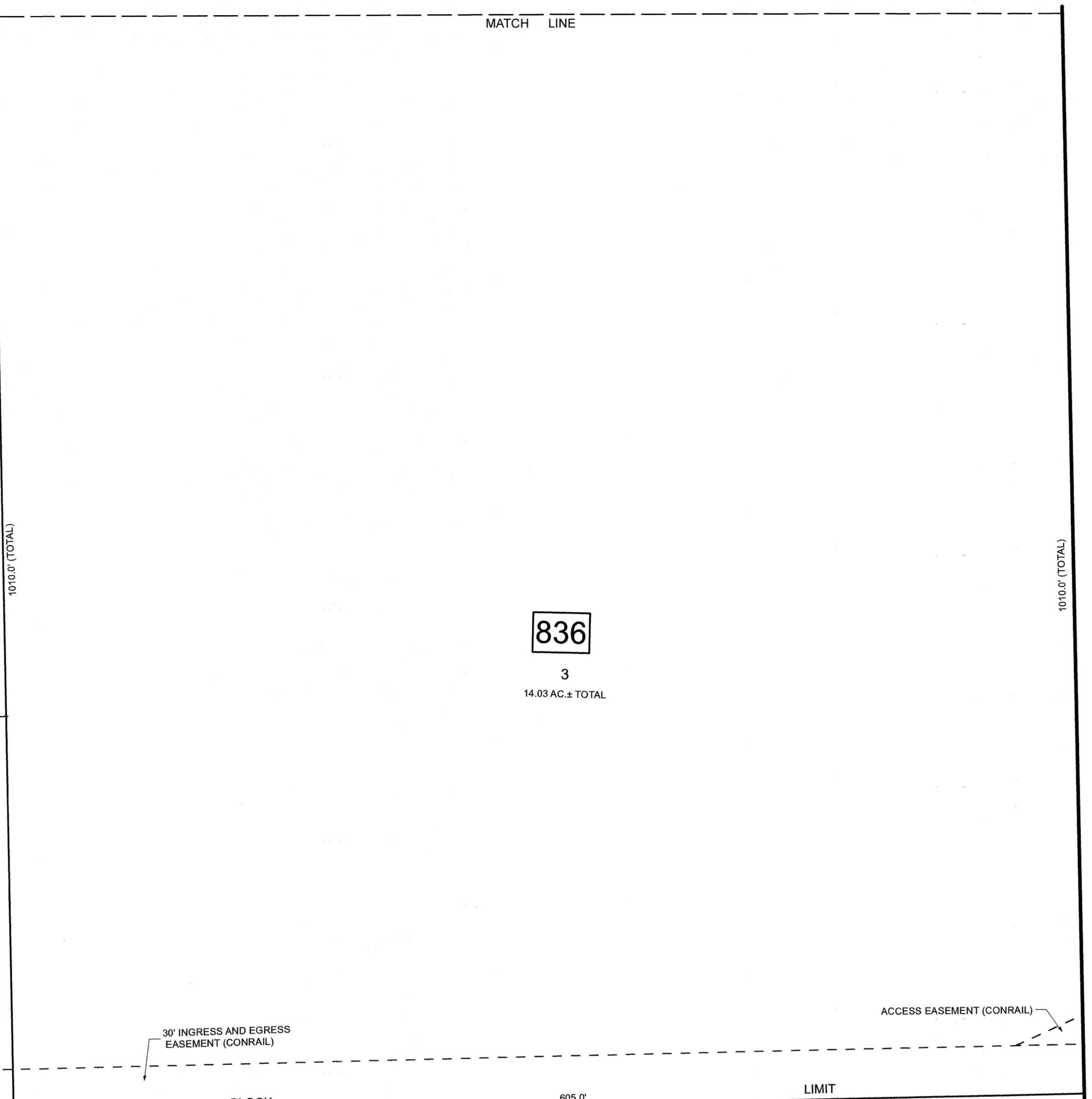
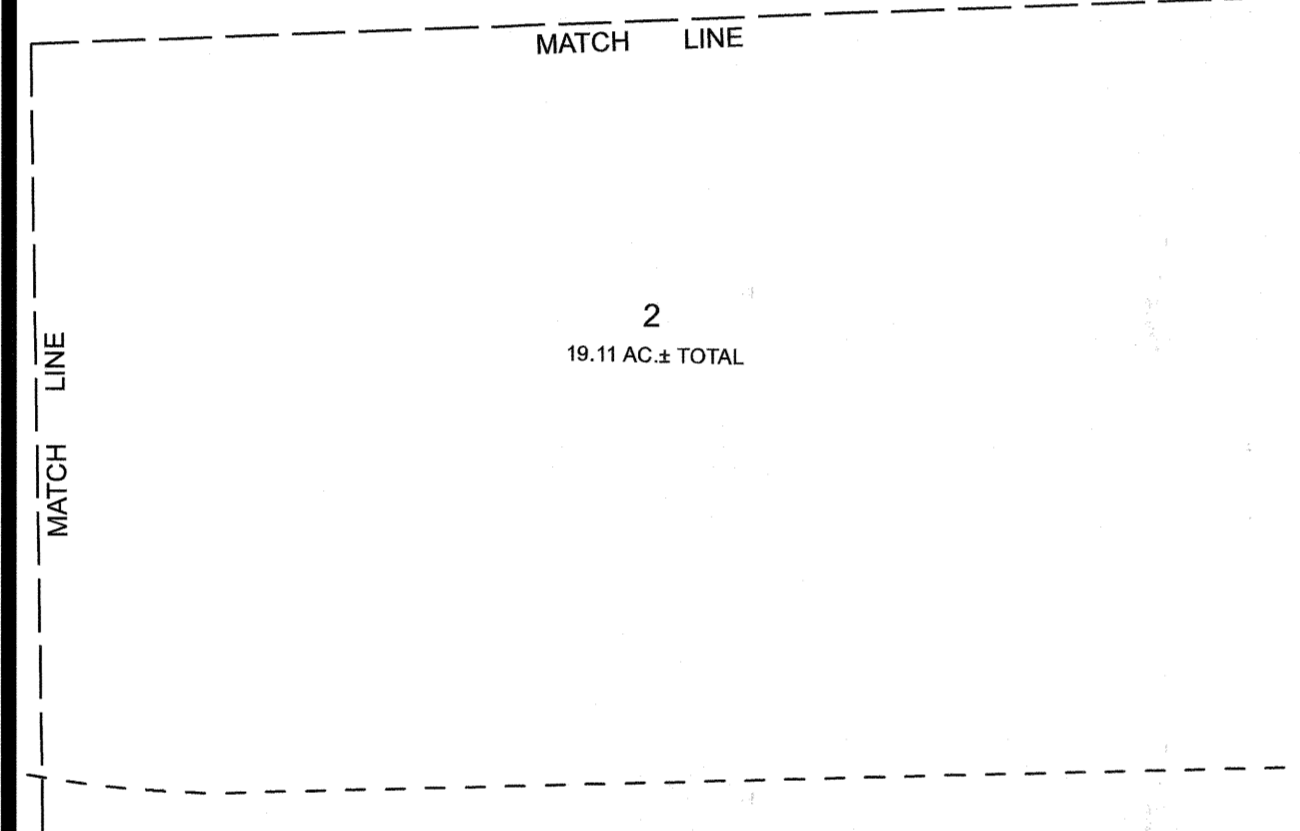
MATCH LINE

NEW JERSEY DEPARTMENT OF THE TREASURY
 DIVISION OF TAXATION
 APPROVED AS A TAX MAP PURSUANT TO THE AUTHORITY OF
 N.J.S.A. 54:1-18 AND N.J.S.A. 54:8D-1
 FOR THE DIRECTOR, DIVISION OF TAXATION

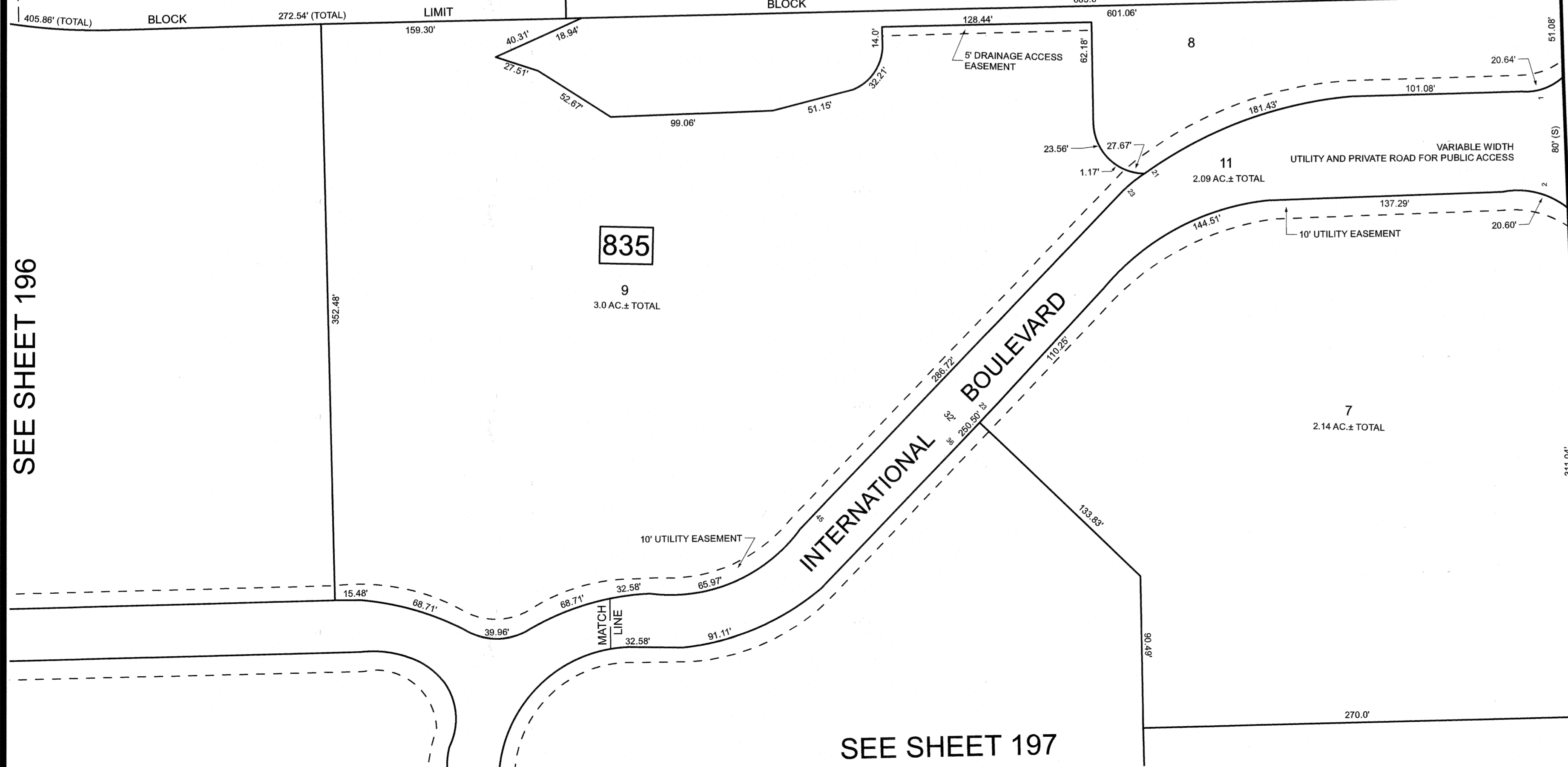


DATE MAR 31 2022 SERIAL NO. 1129

SEE SHEET 219



SEE SHEET 215



SEE SHEET 196

KAPKOWSKI ROAD

SEE SHEET 205

SEE SHEET 197

TAX MAP
CITY OF ELIZABETH
 UNION COUNTY NEW JERSEY
 SCALE: 1" = 50' FEB. 15, 2019
GLEN J. LLOYD
 N.J. PROFESSIONAL LAND SURVEYOR LIC. #GS037598
 MASER CONSULTING PA
 331 NEWMAN SPRINGS ROAD, SUITE 203
 RED BANK, NJ 07701

THIS MAP HAS BEEN DRAWN USING COMPUTER AIDED DRAFTING/DESIGN (CADD)