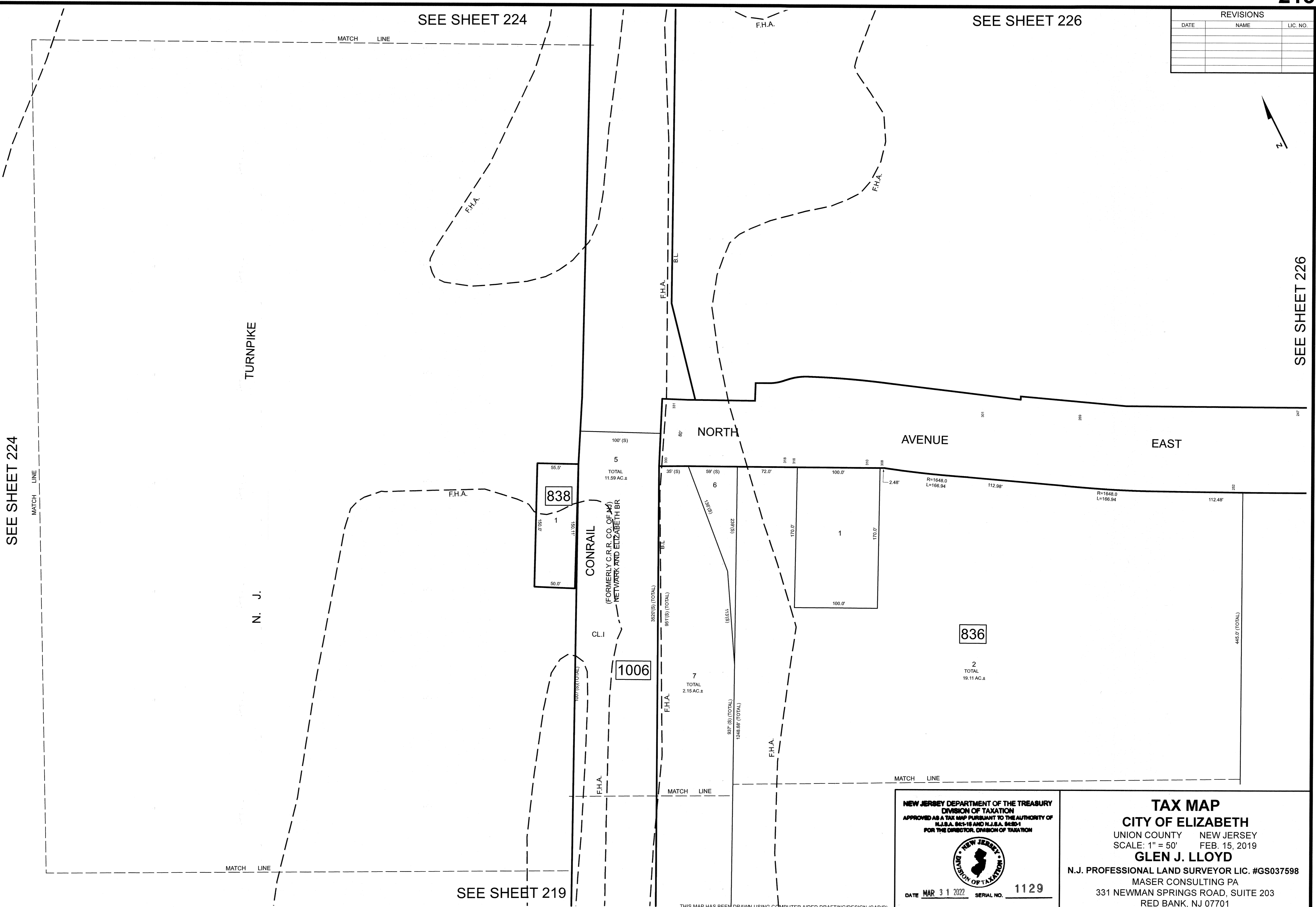
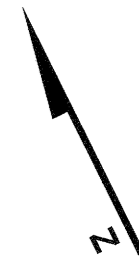


REVISIONS		
DATE	NAME	LIC. NO.



SEE SHEET 224

SEE SHEET 226

SEE SHEET 219

NEW JERSEY DEPARTMENT OF THE TREASURY
DIVISION OF TAXATION
APPROVED AS A TAX MAP PURSUANT TO THE AUTHORITY OF
N.J.S.A. 84:1-18 AND N.J.S.A. 84:2B-1
FOR THE DIRECTOR, DIVISION OF TAXATION



DATE **MAR 31 2022** SERIAL NO. **1129**

TAX MAP
CITY OF ELIZABETH
UNION COUNTY NEW JERSEY
SCALE: 1" = 50' FEB. 15, 2019
GLEN J. LLOYD
N.J. PROFESSIONAL LAND SURVEYOR LIC. #GS037598
MASER CONSULTING PA
331 NEWMAN SPRINGS ROAD, SUITE 203
RED BANK, NJ 07701

THIS MAP HAS BEEN DRAWN USING COMPUTER AIDED DRAFTING/DESIGN (CAD/D)