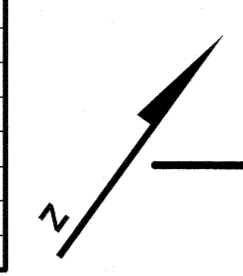


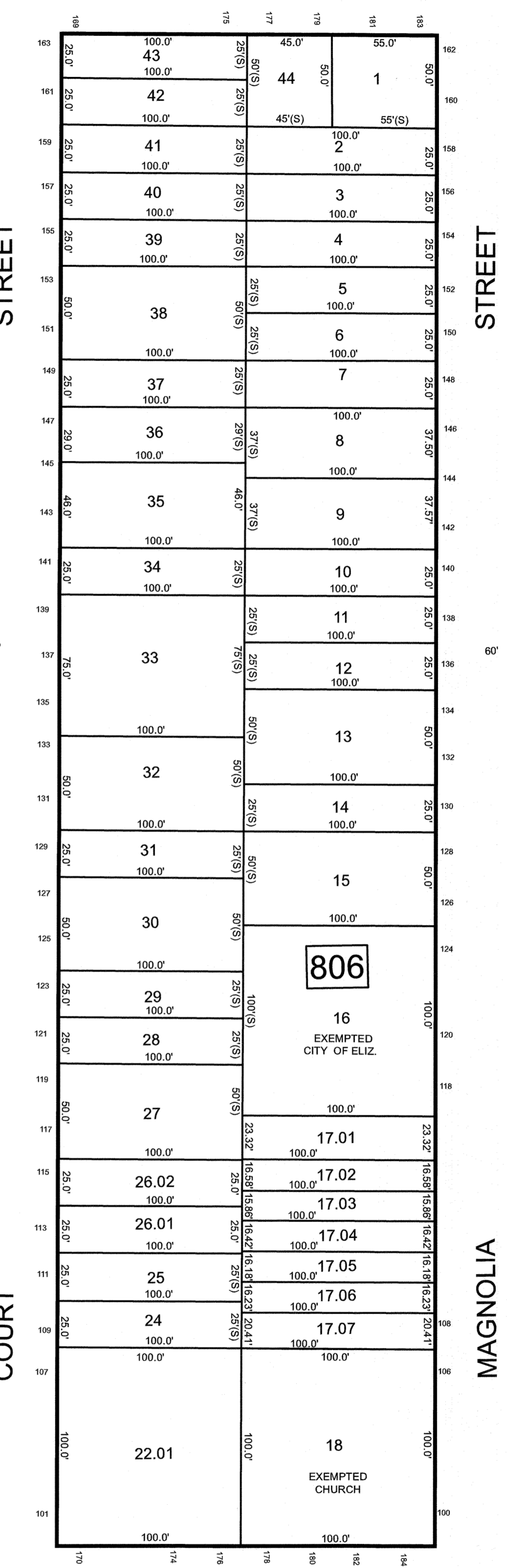
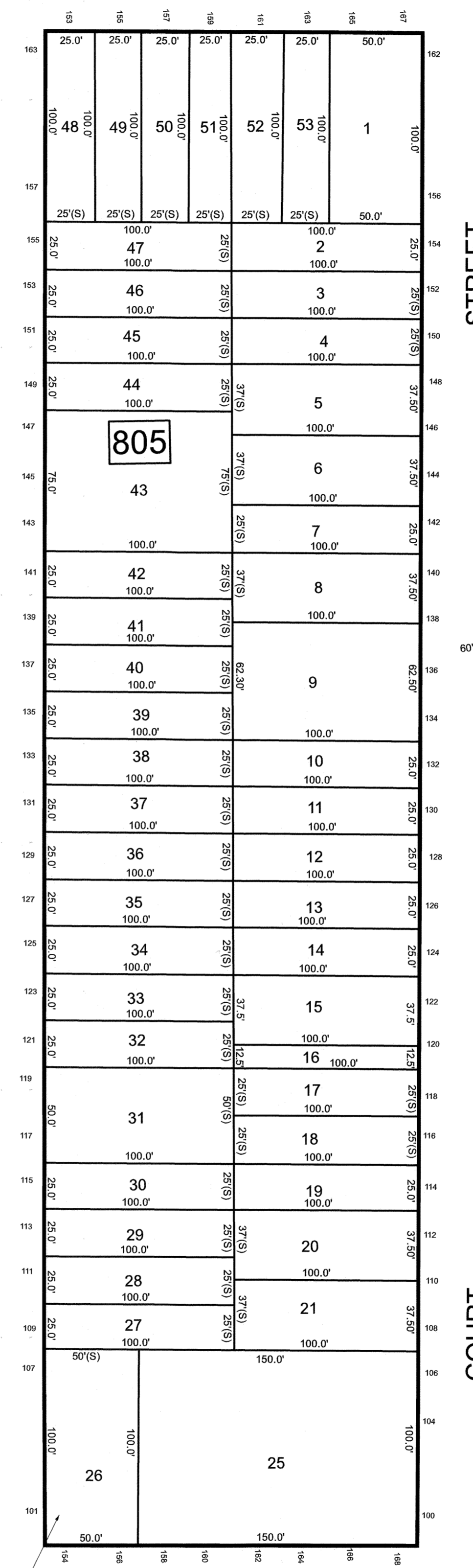
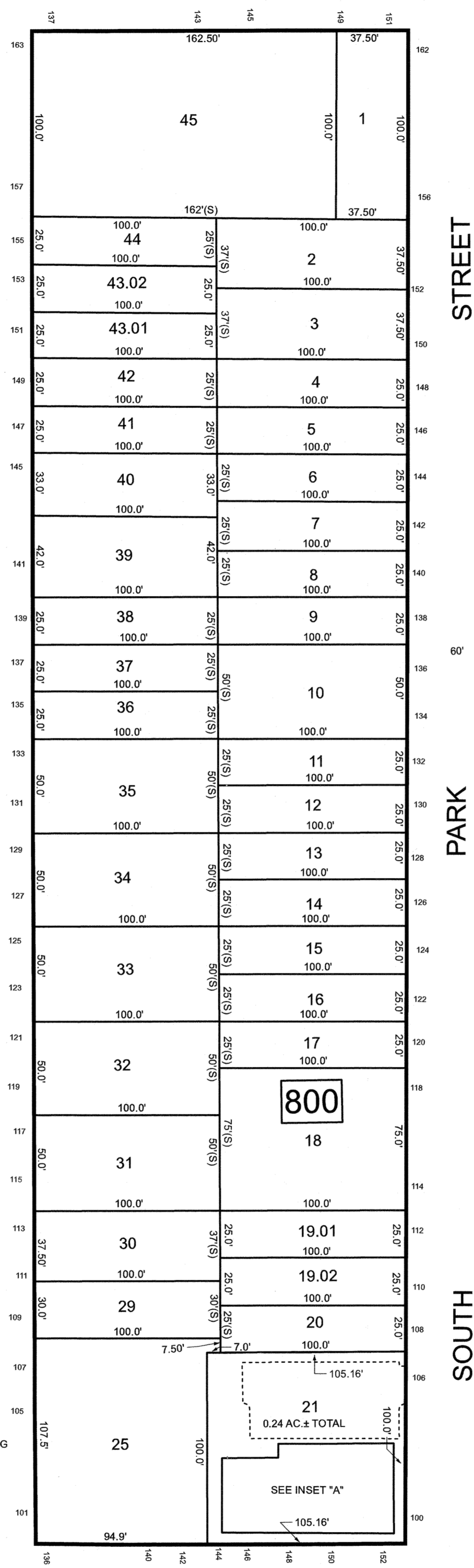
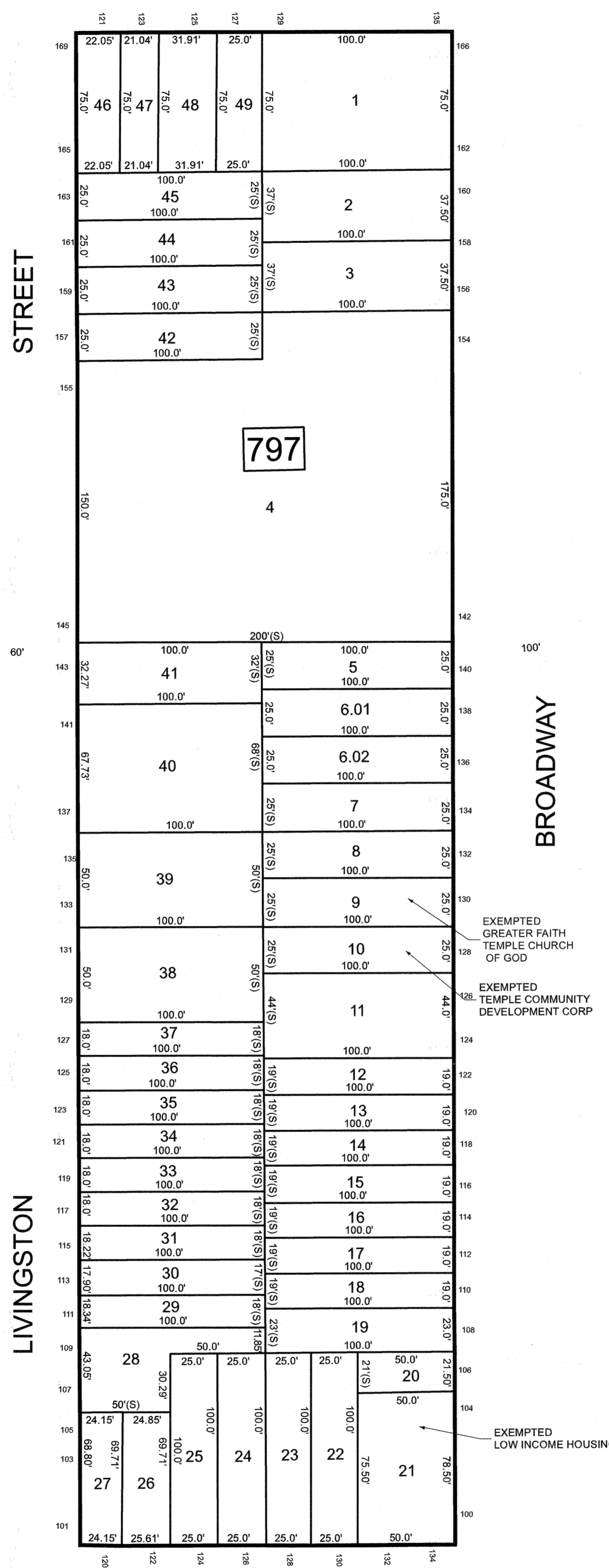
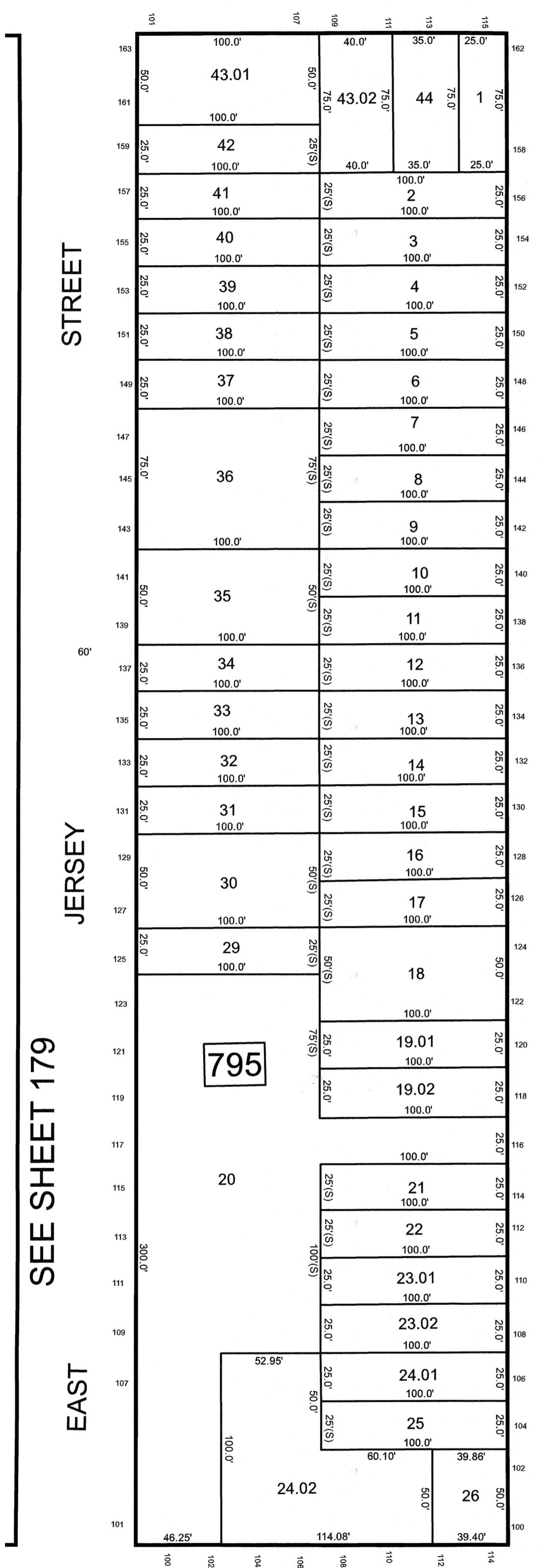
REVISIONS		
DATE	NAME	LIC. NO.



SEE SHEET 183

SEE SHEET 186

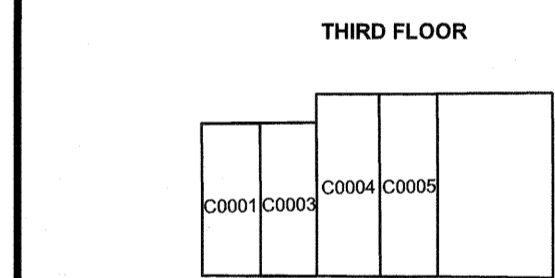
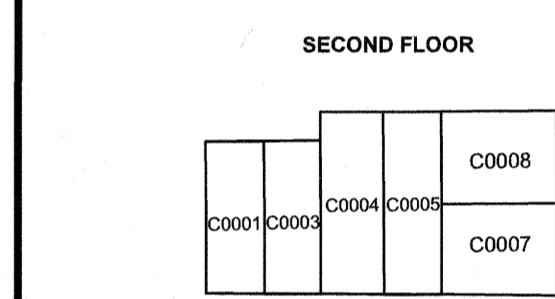
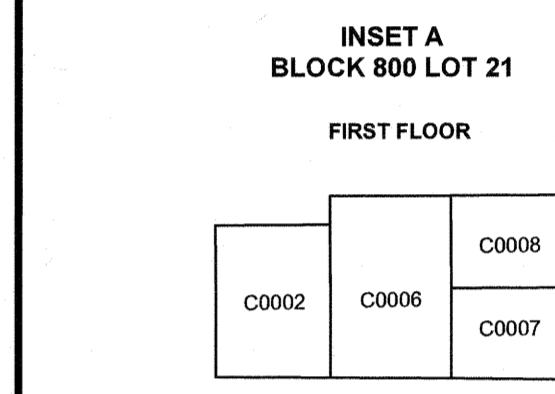
SEE SHEET 186



SEE SHEET 179

SEE SHEET 181

SEE SHEET 181



BLOCK	LOT	QUAL	SQ. FT.	FLOOR	UNIT NO.
800	21	C0001	980	2/3	A
		C0002	935	1	B
		C0003	932	2/3	C
		C0004	1,230	2/3	D
		C0005	1,233	2/3	E
		C0006	1,408	1	F
		C0007	944	1/2	G
		C0008	959	1/2	H

SEE SHEET 179

SEE SHEET 181

SEE SHEET 181

NEW JERSEY DEPARTMENT OF THE TREASURY
 DIVISION OF TAXATION
 APPROVED AS A TAX MAP PURSUANT TO THE AUTHORITY OF
 N.J.S.A. 54:18 AND N.J.S.A. 54:8-1
 FOR THE DIRECTOR, DIVISION OF TAXATION

DATE MAR 31 2022 SERIAL NO. 1129

TAX MAP
CITY OF ELIZABETH
 UNION COUNTY NEW JERSEY
 SCALE: 1" = 50'
GLEN J. LLOYD
 N.J. PROFESSIONAL LAND SURVEYOR LIC. #GS037598
 MASER CONSULTING PA
 331 NEWMAN SPRINGS ROAD, SUITE 203
 RED BANK, NJ 07701

THIS MAP HAS BEEN DRAWN USING COMPUTER AIDED DRAFTING/DESIGN (CADD)