

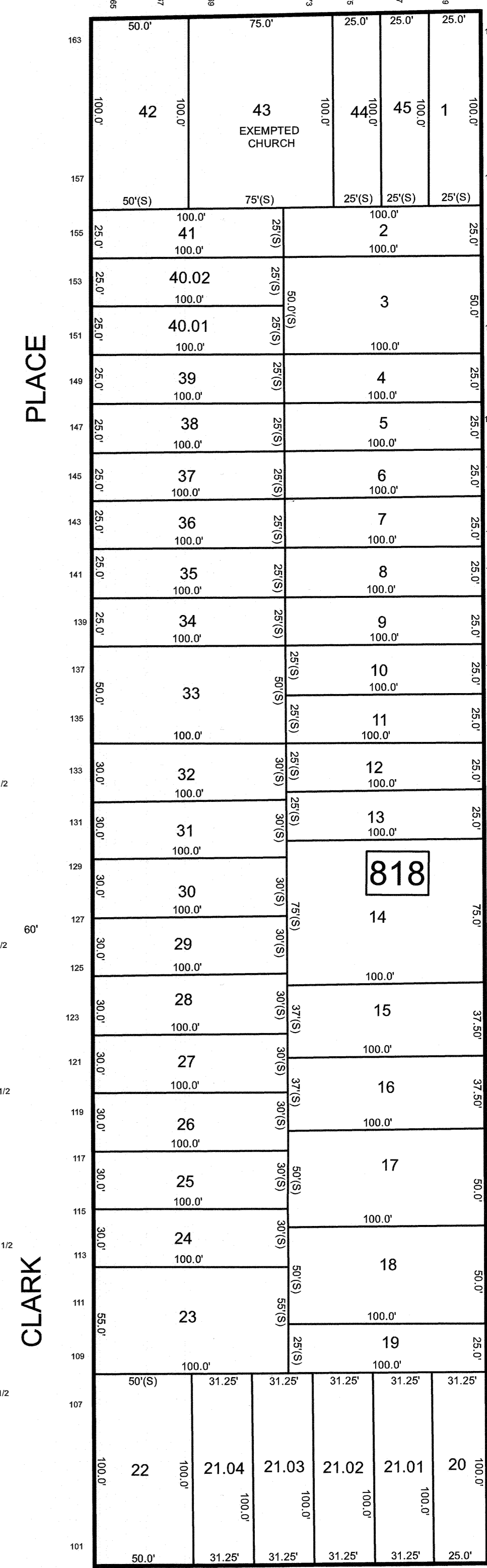
REVISIONS		
DATE	NAME	LIC. NO.

SEE SHEET 186

STREET

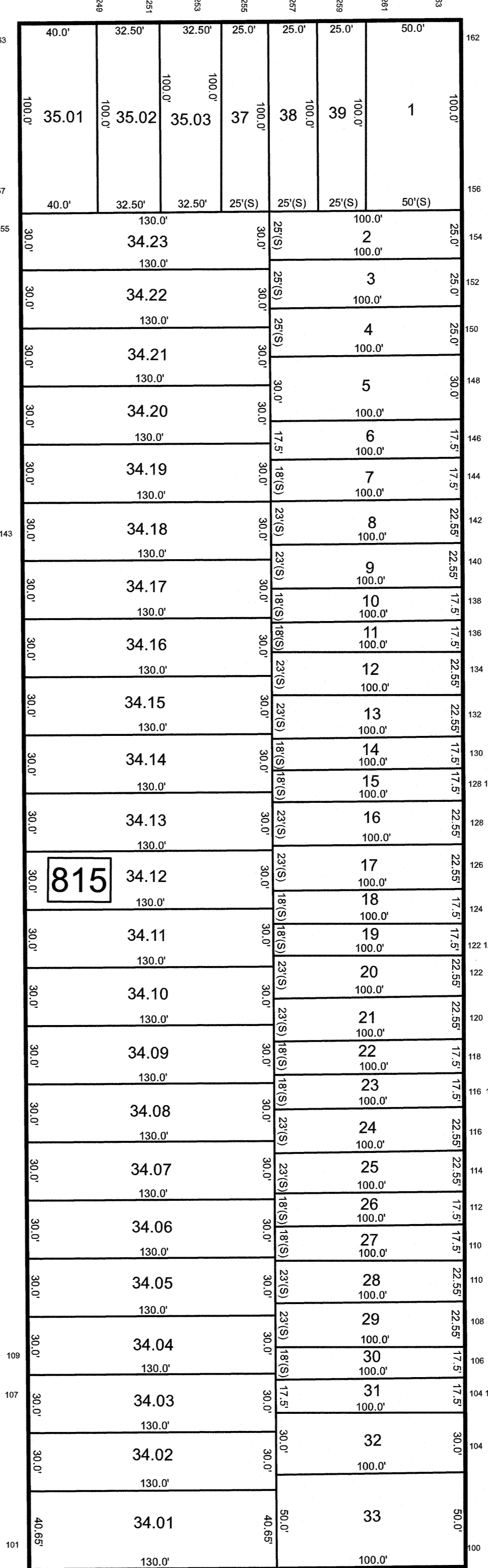
WIDTH VARIES

STREET



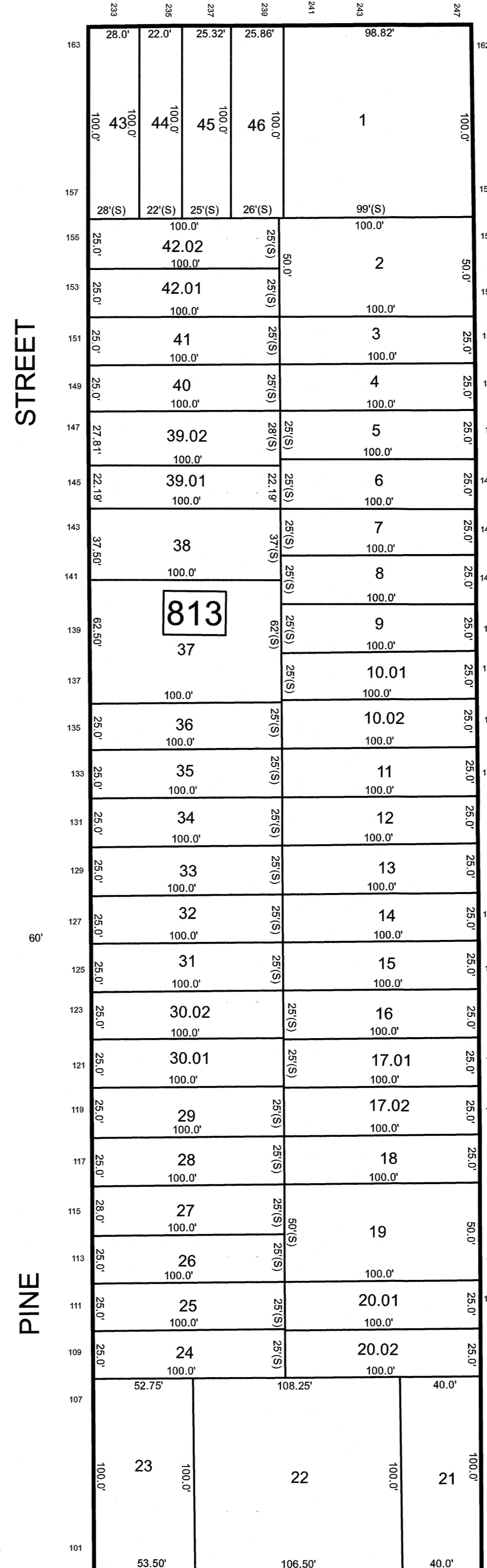
SEE SHEET 192

3E17S11



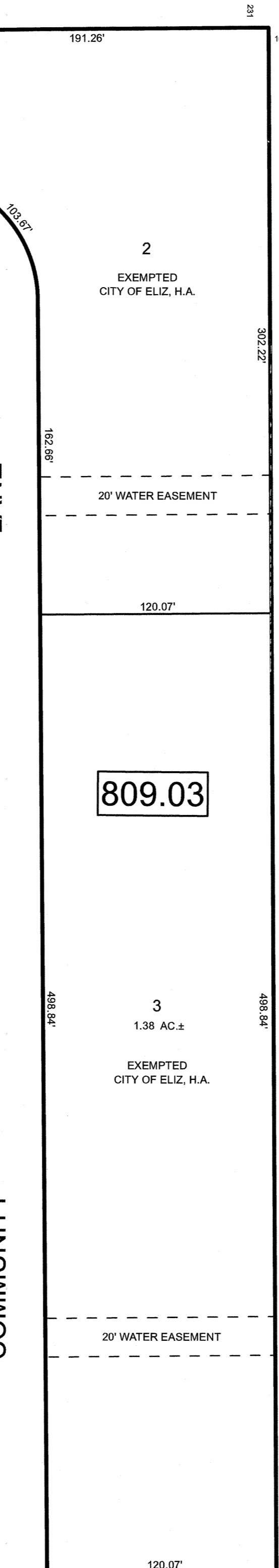
PORT AVENUE

PORT AVENUE



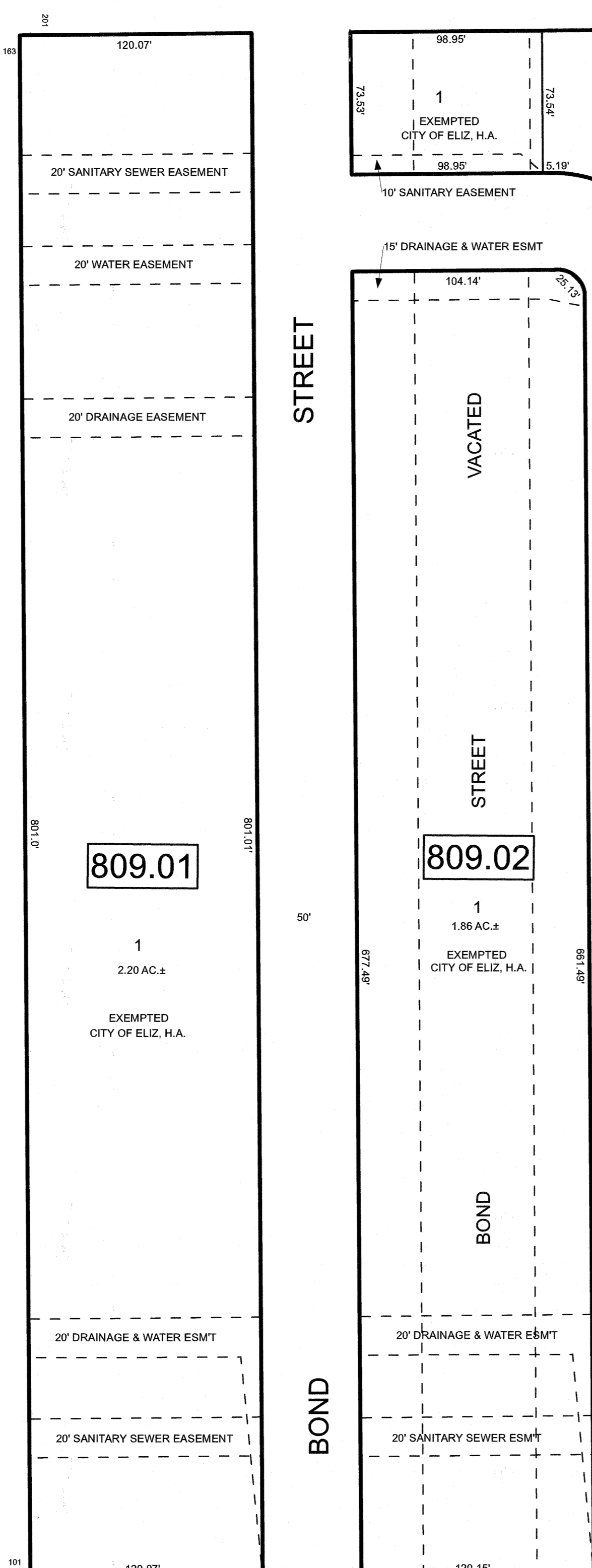
PINE STREET

PINE STREET



COMMUNITY LANE

COMMUNITY LANE

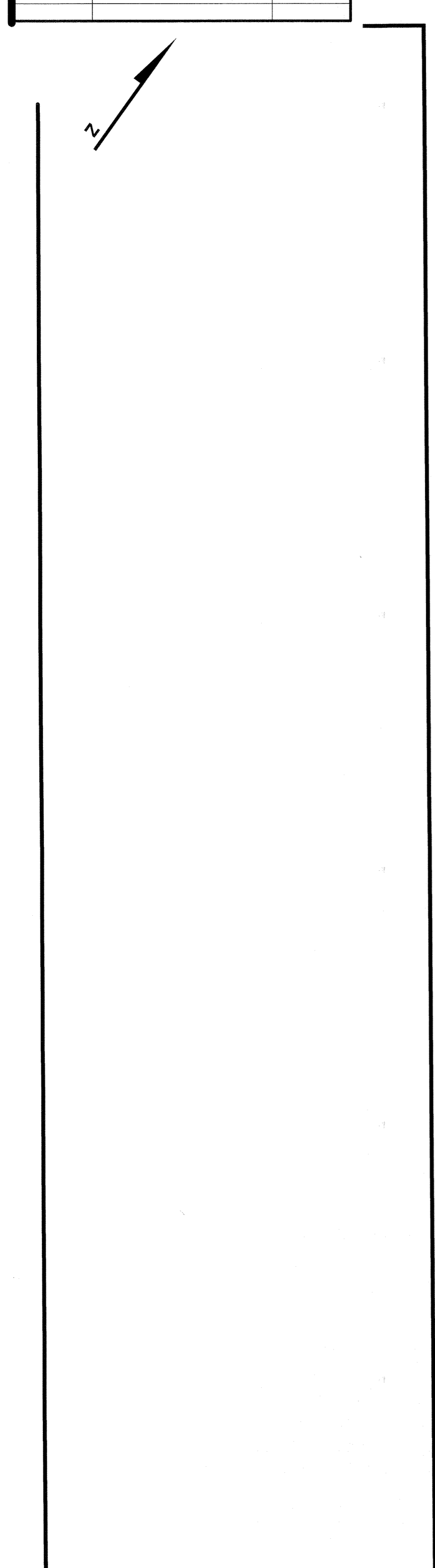


BOND STREET

BOND STREET

MAGNOLIA AVENUE

MAGNOLIA AVENUE



SEE SHEET 182

COURT STREET

STREET

SEE SHEET 182

COURT STREET

STREET

NEW JERSEY DEPARTMENT OF THE TREASURY
 DIVISION OF TAXATION
 APPROVED AS A TAX MAP PURSUANT TO THE AUTHORITY OF
 N.J.S.A. 54:1-18 AND N.J.S.A. 54:5-1
 FOR THE DIRECTOR, DIVISION OF TAXATION



DATE MAR 31 2022 SERIAL NO. 1129

TAX MAP
CITY OF ELIZABETH
 UNION COUNTY NEW JERSEY
 SCALE: 1" = 50' FEB. 15, 2019
GLEN J. LLOYD
 N.J. PROFESSIONAL LAND SURVEYOR LIC. #GS037598
 MASER CONSULTING PA
 331 NEWMAN SPRINGS ROAD, SUITE 203
 RED BANK, NJ 07701

SEE SHEET 188

THIS MAP HAS BEEN DRAWN USING COMPUTER AIDED DRAFTING/DESIGN (CADD)