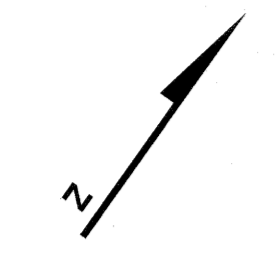


SEE SHEET 182

| REVISIONS | | |
|-----------|------|----------|
| DATE | NAME | LIC. NO. |
| | | |
| | | |

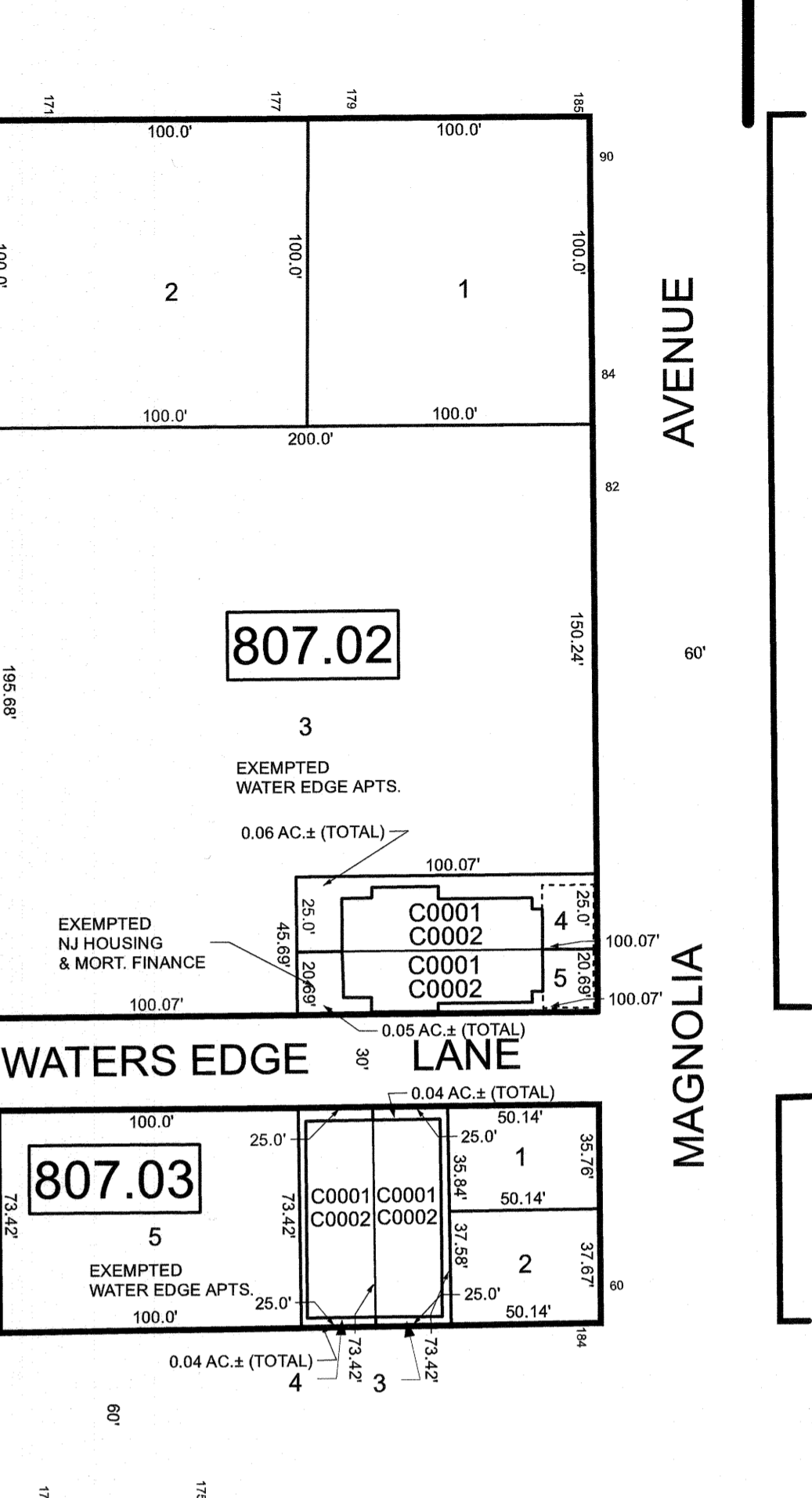
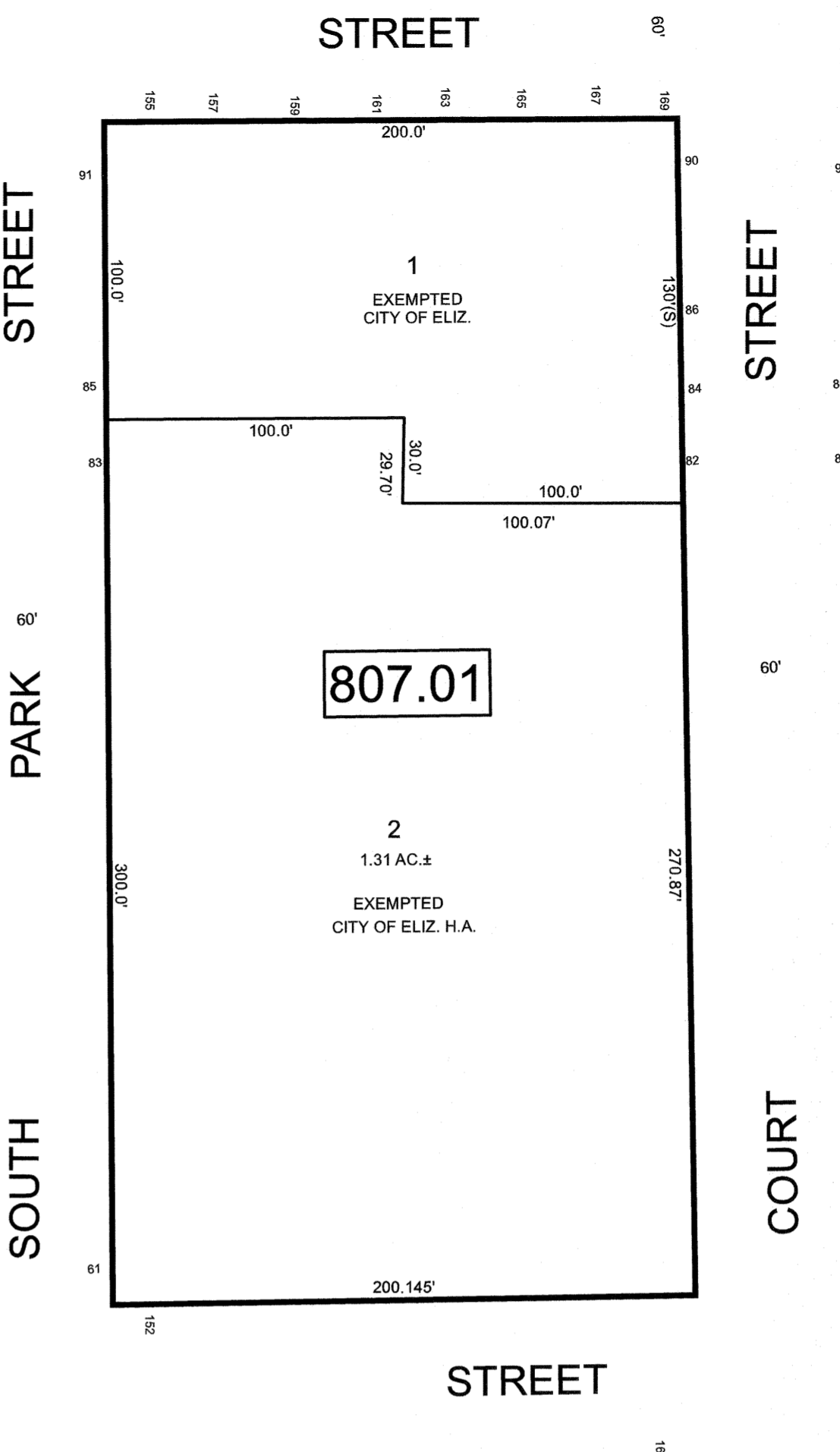
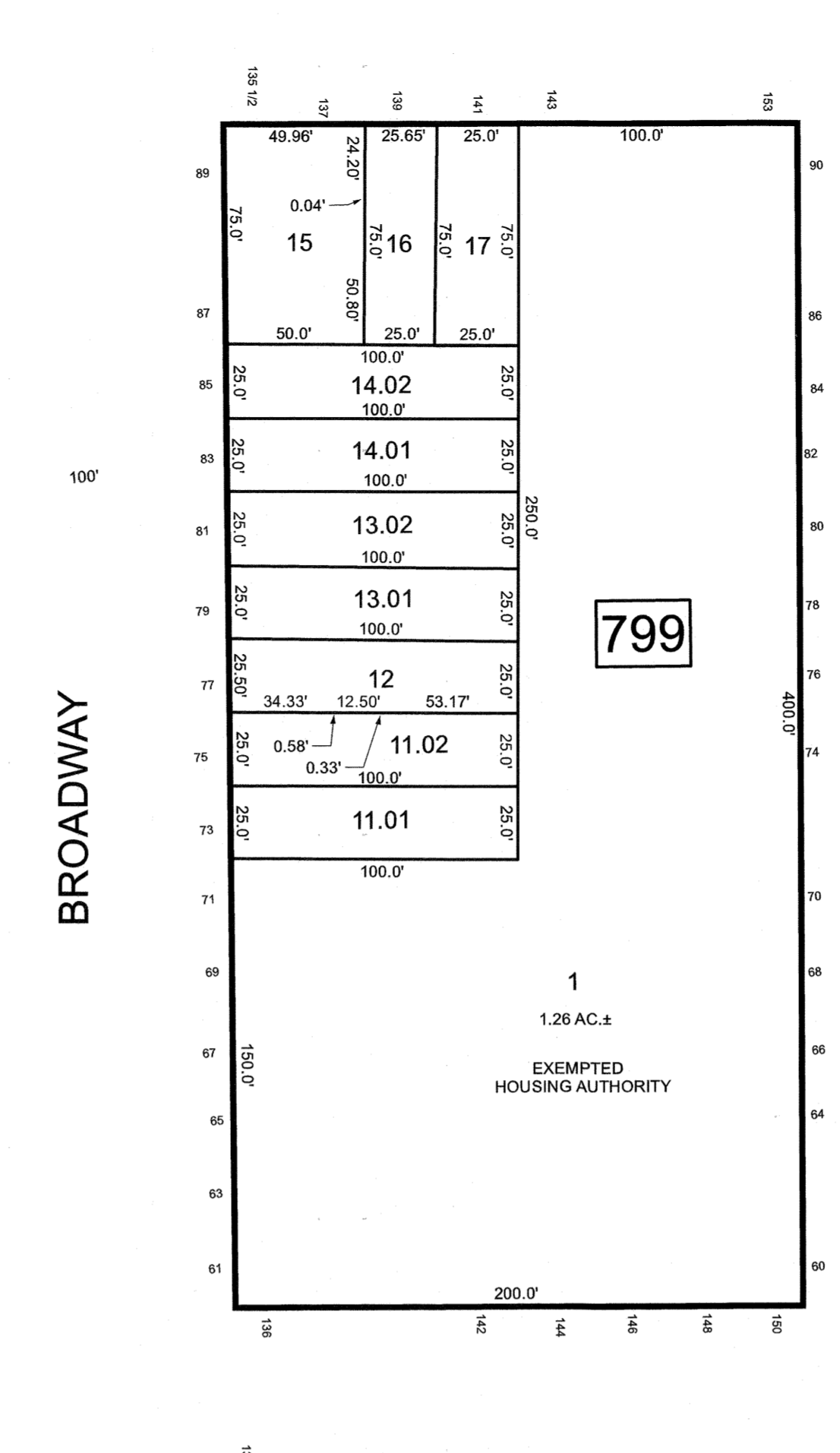
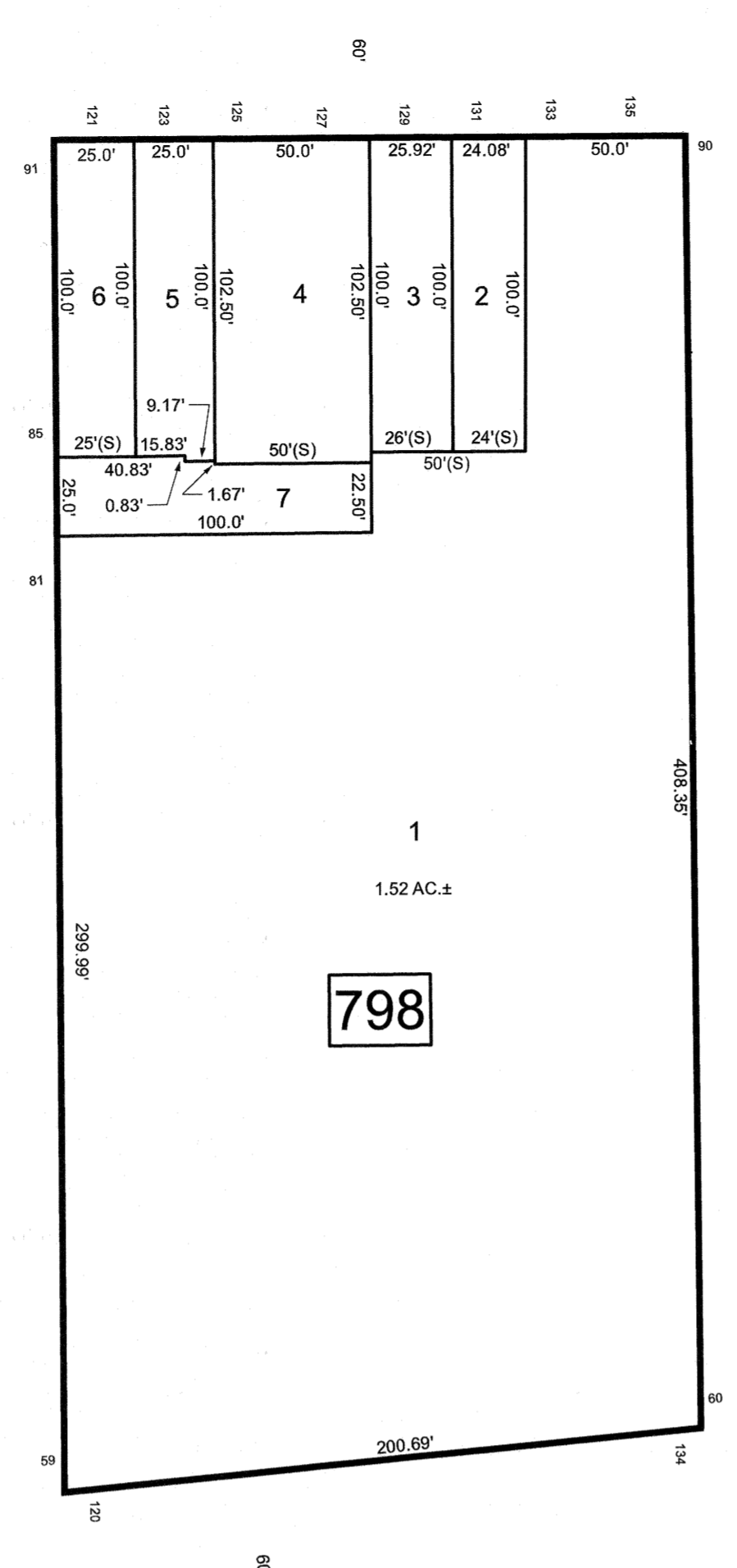
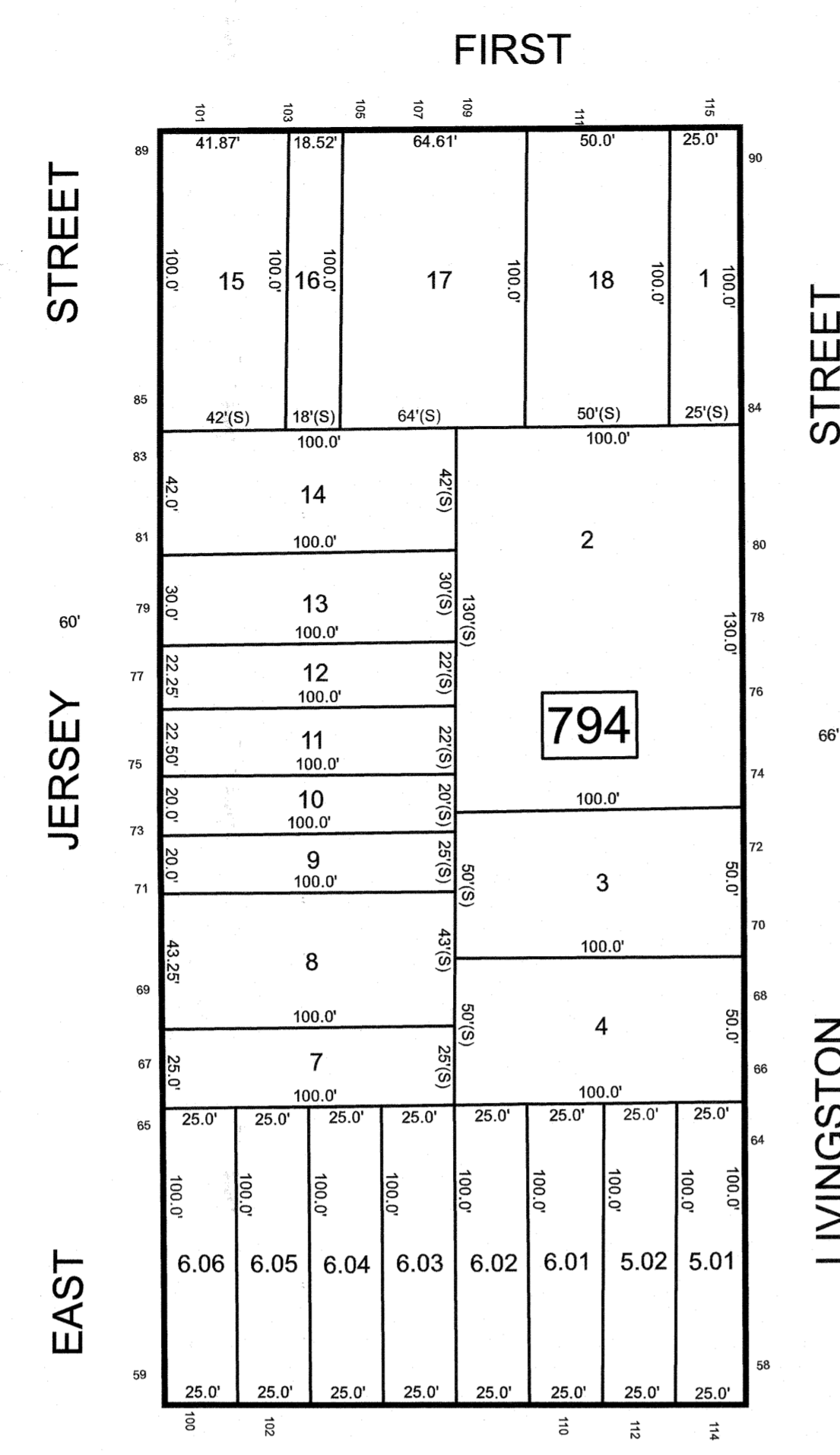


| BLOCK | LOT | QUAL | SQ. FT. | FLOOR | UNIT NO. | TAX ACCT. |
|--------|-----|-------|---------|-------|----------|-------------|
| 807.03 | 4 | C0001 | 750 | 1 | 178A | 1-738.5 C-1 |
| | | C0002 | 1,850 | 2/3 | 178B | 1-738.5 C-2 |

| BLOCK | LOT | QUAL | SQ. FT. | FLOOR | UNIT NO. | TAX ACCT. |
|--------|-----|-------|---------|-------|----------|-------------|
| 807.02 | 3 | C0001 | 750 | 1 | 180A | 1-738.6 C-1 |
| | | C0002 | 1,850 | 2/3 | 180B | 1-738.6 C-2 |

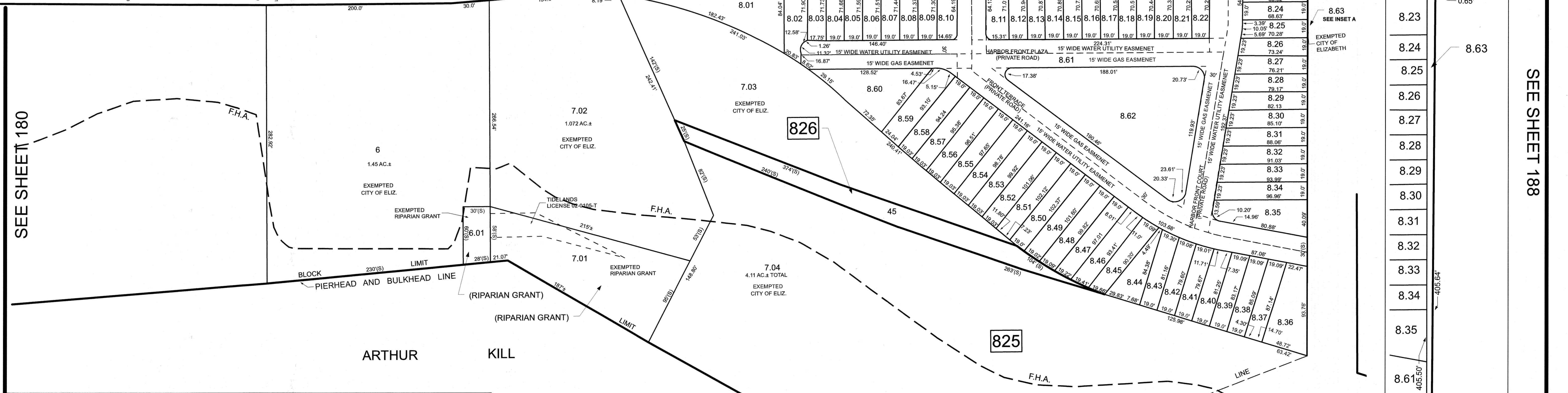
| BLOCK | LOT | QUAL | SQ. FT. | FLOOR | UNIT NO. | TAX ACCT. |
|--------|-----|-------|---------|-------|----------|--------------|
| 807.02 | 4 | C0001 | 818 | 1 | 70A | 1-738.23 C-1 |
| | | C0002 | 1,615 | 2/3 | 70B | 1-738.23 C-2 |

| BLOCK | LOT | QUAL | SQ. FT. | FLOOR | UNIT NO. | TAX ACCT. |
|--------|-----|-------|---------|-------|----------|--------------|
| 807.02 | 5 | C0001 | 818 | 1 | 68A | 1-738.23 C-1 |
| | | C0002 | 1,615 | 2/3 | 68B | 1-738.23 C-2 |



FRONT

SEE SHEET 180



SEE SHEET 188

TAX MAP
CITY OF ELIZABETH
 UNION COUNTY NEW JERSEY
 SCALE: 1" = 50' FEB. 15, 2019
GLEN J. LLOYD
 N.J. PROFESSIONAL LAND SURVEYOR LIC. #GS037598
 MASER CONSULTING PA
 331 NEWMAN SPRINGS ROAD, SUITE 203
 RED BANK, NJ 07701

NEW JERSEY DEPARTMENT OF THE TREASURY
 DIVISION OF TAXATION
 APPROVED AS A TAX MAP PURSUANT TO THE AUTHORITY OF
 N.J.S.A. 84C-18 AND N.J.S.A. 84C-51
 FOR THE DIRECTOR, DIVISION OF TAXATION

DATE MAR 31 2022 SERIAL NO. 1129

THIS MAP HAS BEEN DRAWN USING COMPUTER AIDED DRAFTING/DESIGN (CAD/D)

SEE SHEET 189