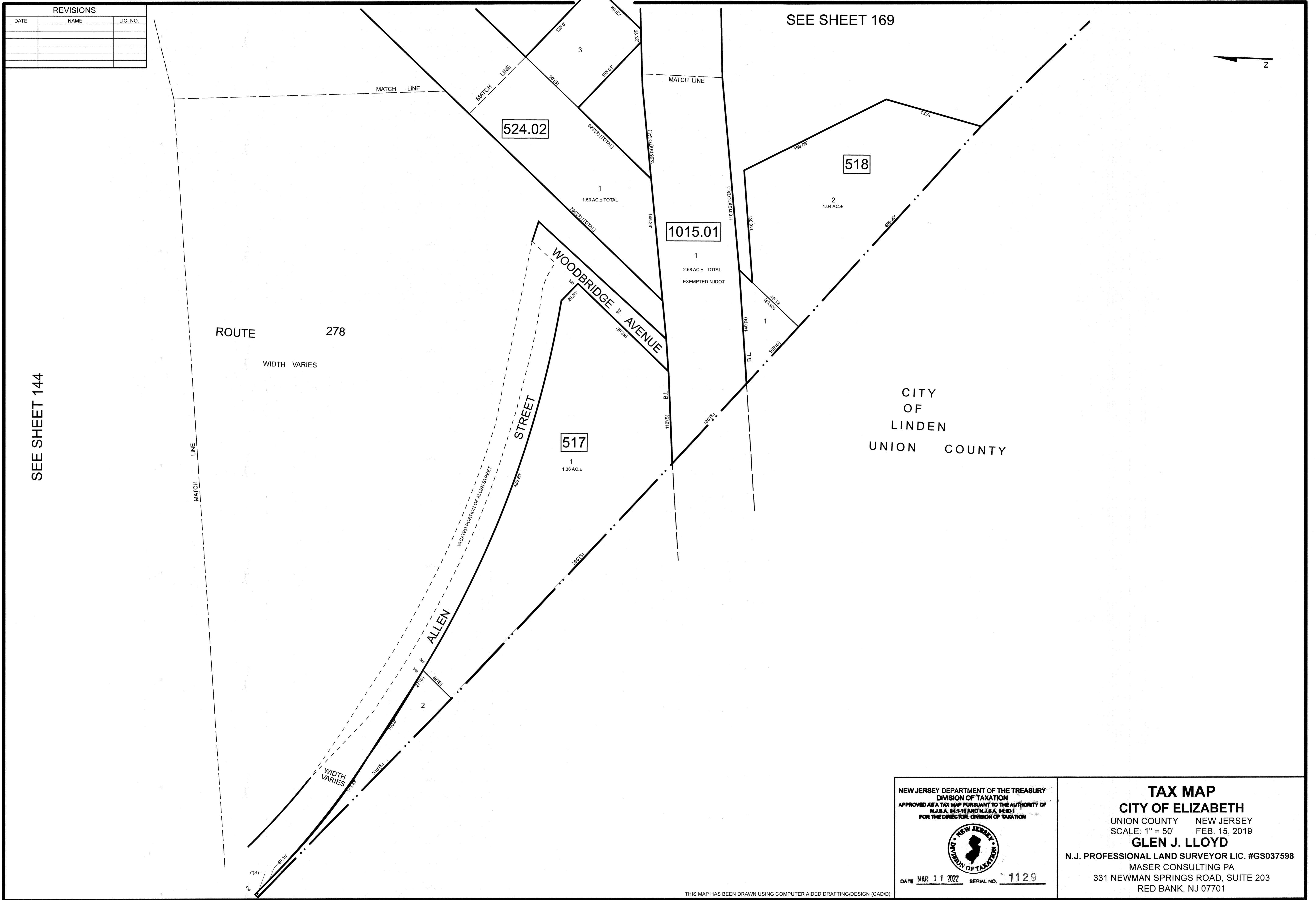



REVISIONS		
DATE	NAME	LIC. NO.



<p>NEW JERSEY DEPARTMENT OF THE TREASURY DIVISION OF TAXATION APPROVED AS A TAX MAP PURSUANT TO THE AUTHORITY OF N.J.S.A. 54:1-18 AND N.J.S.A. 54:26-1 FOR THE DIRECTOR, DIVISION OF TAXATION</p>  <p>DATE MAR 31 2022 SERIAL NO. 1129</p>	<p>TAX MAP CITY OF ELIZABETH UNION COUNTY NEW JERSEY SCALE: 1" = 50' FEB. 15, 2019 GLEN J. LLOYD N.J. PROFESSIONAL LAND SURVEYOR LIC. #GS037598 MASER CONSULTING PA 331 NEWMAN SPRINGS ROAD, SUITE 203 RED BANK, NJ 07701</p>
---	--

THIS MAP HAS BEEN DRAWN USING COMPUTER AIDED DRAFTING/DESIGN (CADD)