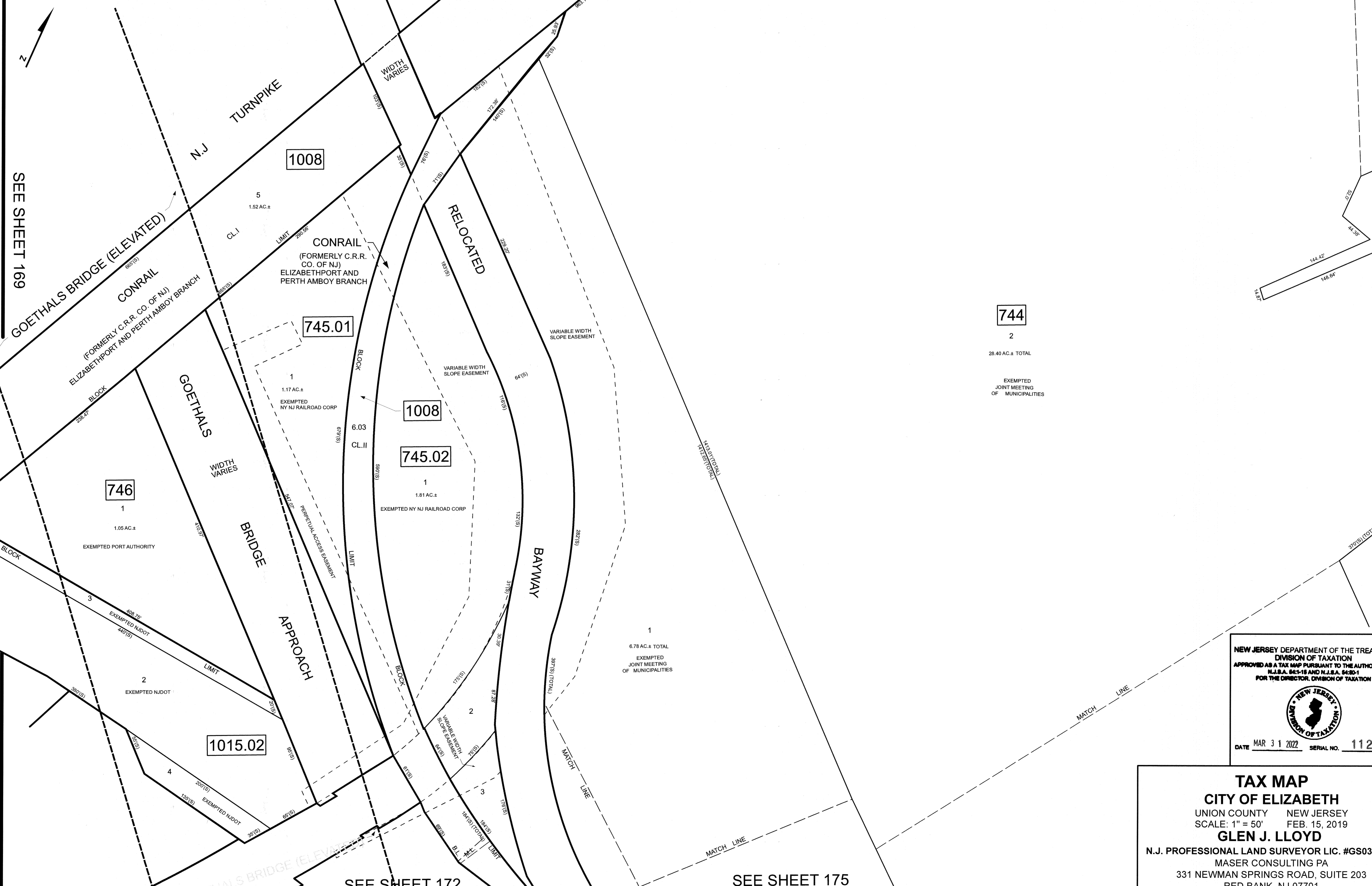


REVISIONS		
DATE	NAME	LIC. NO.

SEE SHEET 145

SEE SHEET 167



744

2
28.40 AC ± TOTAL

EXEMPTED
JOINT MEETING
OF MUNICIPALITIES

746

1
1.05 AC ±
EXEMPTED PORT AUTHORITY

745.01

1
1.17 AC ±
EXEMPTED NY NJ RAILROAD CORP

1008

745.02

1
1.81 AC ±
EXEMPTED NY NJ RAILROAD CORP

1015.02

2
EXEMPTED NJDOT

1
6.78 AC ± TOTAL
EXEMPTED
JOINT MEETING
OF MUNICIPALITIES

NEW JERSEY DEPARTMENT OF THE TREASURY
DIVISION OF TAXATION
APPROVED AS A TAX MAP PURSUANT TO THE AUTHORITY OF
N.J.S.A. 54:1-16 AND N.J.S.A. 54:80-1
FOR THE DIRECTOR, DIVISION OF TAXATION



DATE MAR 31 2022 SERIAL NO. 1129

TAX MAP
CITY OF ELIZABETH
UNION COUNTY NEW JERSEY
SCALE: 1" = 50' FEB. 15, 2019
GLEN J. LLOYD

N.J. PROFESSIONAL LAND SURVEYOR LIC. #GS037598
MASER CONSULTING PA
331 NEWMAN SPRINGS ROAD, SUITE 203
RED BANK, NJ 07701

THIS MAP HAS BEEN DRAWN USING COMPUTER AIDED DRAFTING/DESIGN (CAD/D)