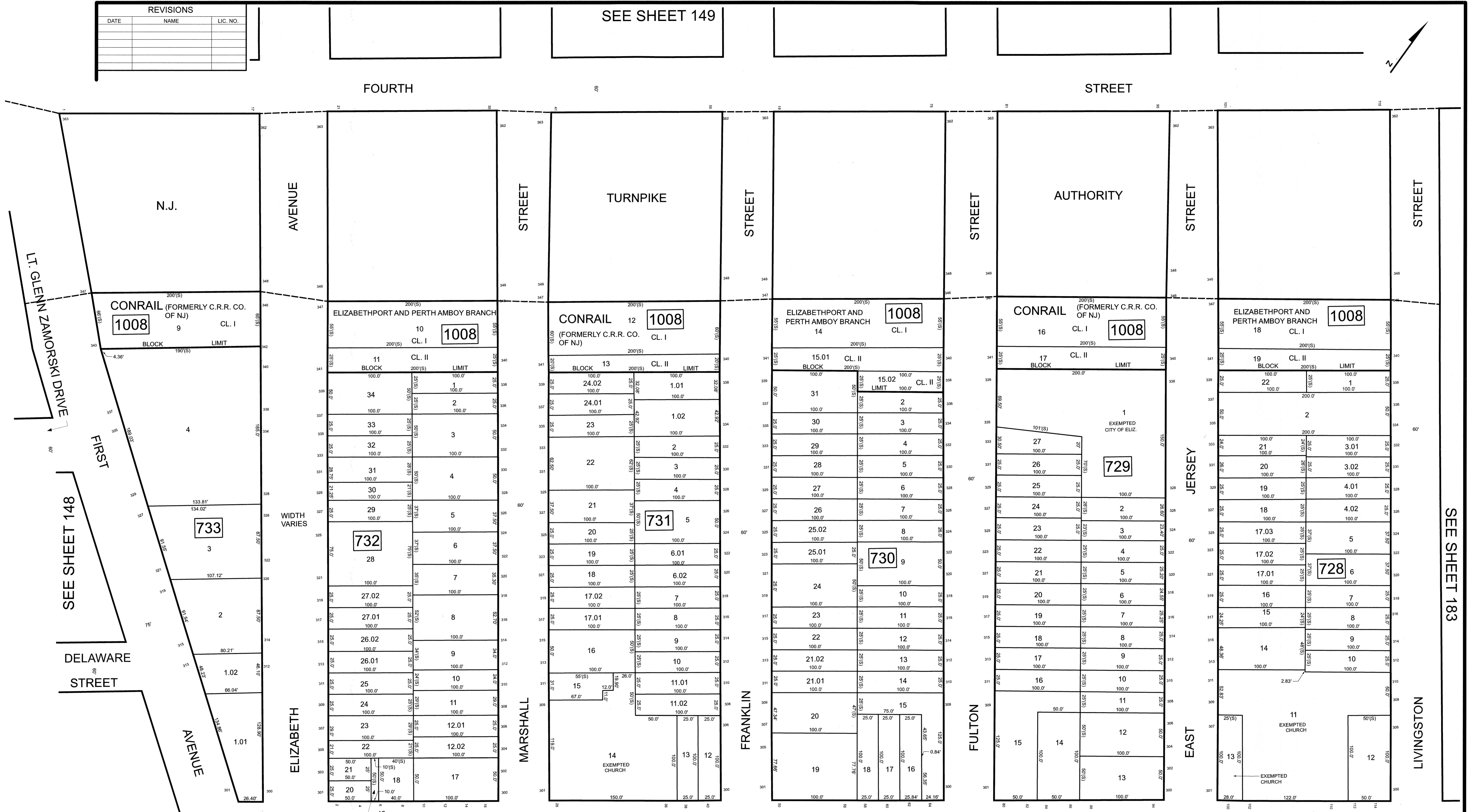


REVISIONS		
DATE	NAME	LIC. NO.



L.T. GLENN ZAMORSKI DRIVE


SEE SHEET 148

SEE SHEET 183

ERIE STREET

SEE SHEET 164

NEW JERSEY DEPARTMENT OF THE TREASURY
 DIVISION OF TAXATION
 APPROVED AS A TAX MAP PURSUANT TO THE AUTHORITY OF
 N.J.S.A. 54:15 AND N.J.S.A. 54:23-1
 FOR THE DIRECTOR, DIVISION OF TAXATION



DATE **MAR 31 2022** SERIAL NO. **1129**

TAX MAP
CITY OF ELIZABETH
 UNION COUNTY NEW JERSEY
 SCALE: 1" = 50' FEB. 15, 2019
GLEN J. LLOYD
 N.J. PROFESSIONAL LAND SURVEYOR LIC. #GS037598
 MASER CONSULTING PA
 331 NEWMAN SPRINGS ROAD, SUITE 203
 RED BANK, NJ 07701

THIS MAP HAS BEEN DRAWN USING COMPUTER AIDED DRAFTING/DESIGN (CAD/D)