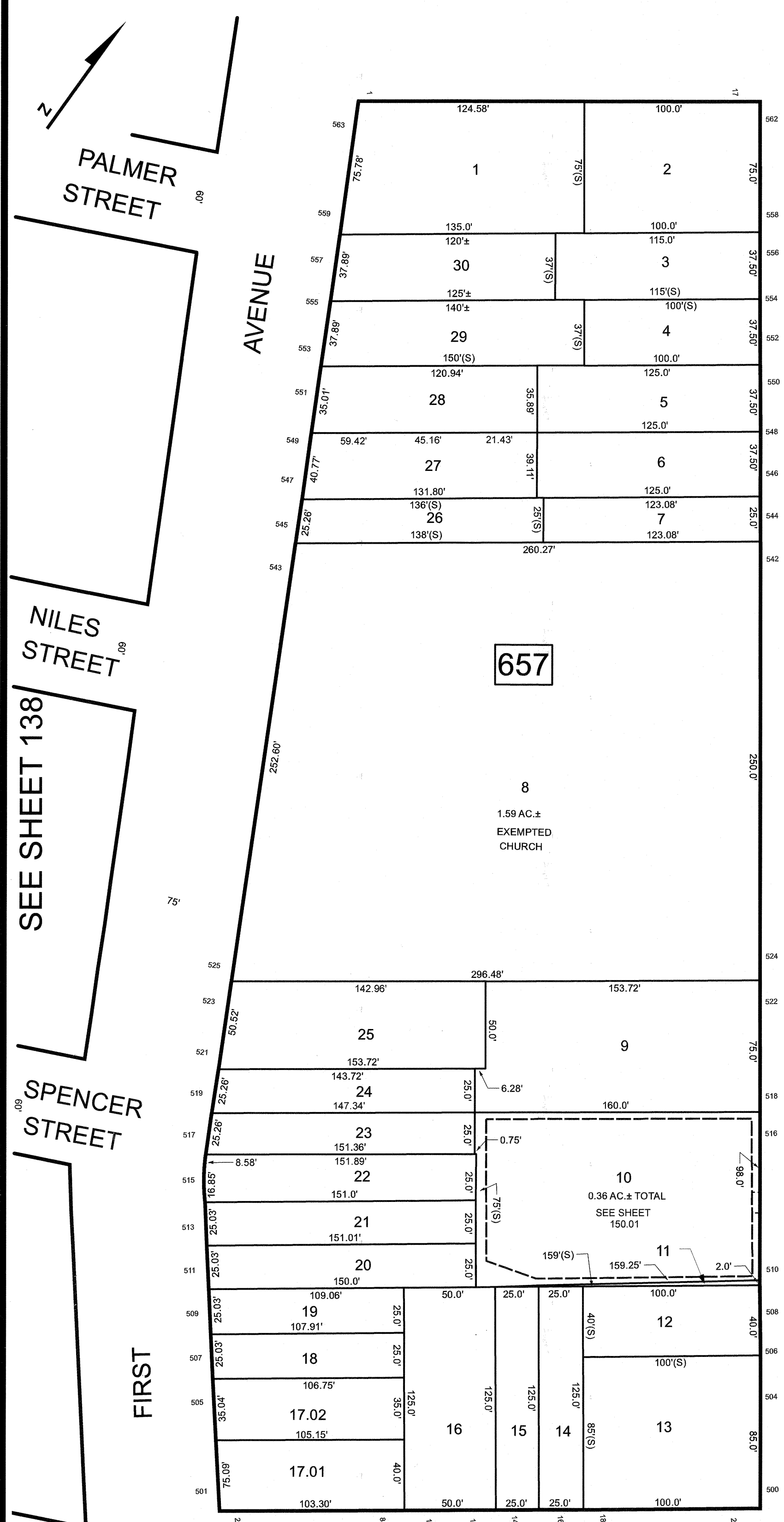
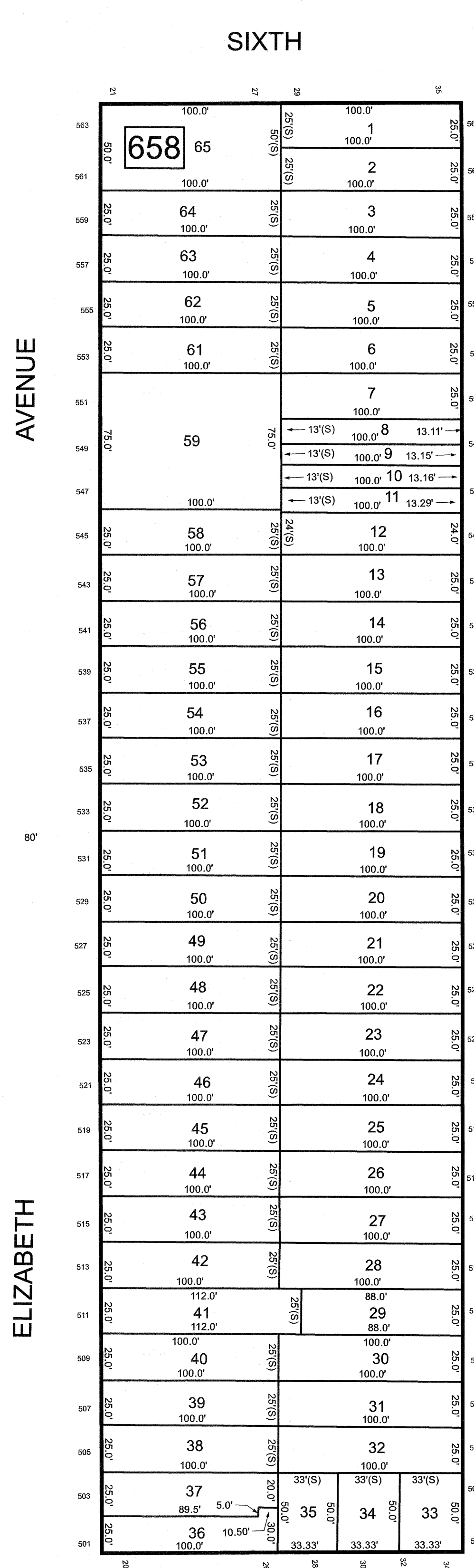


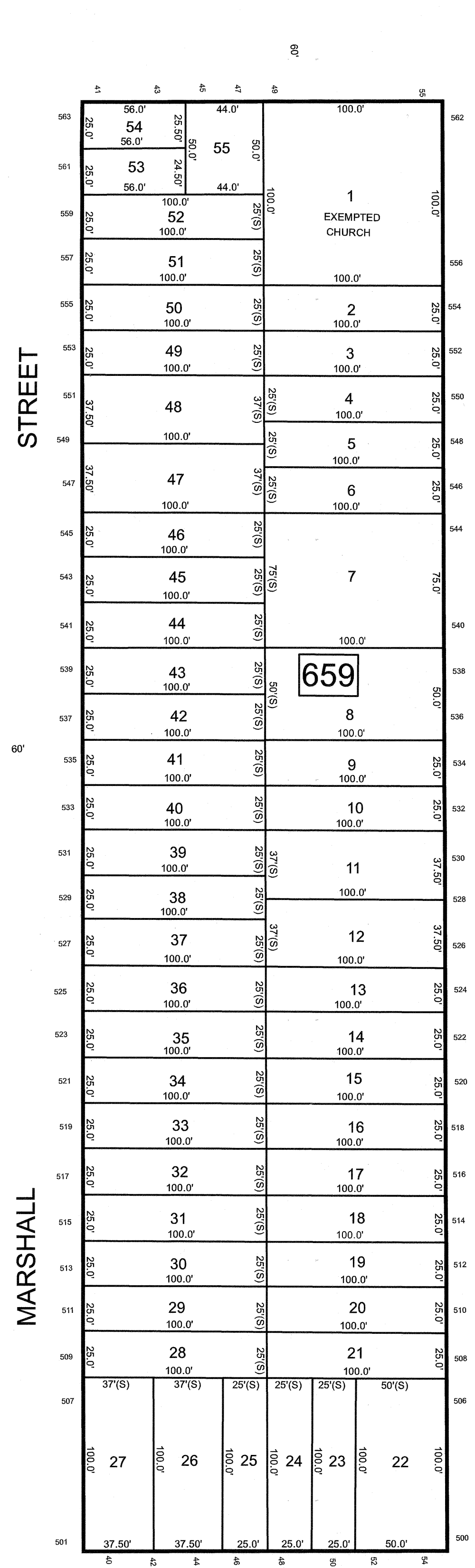
REVISIONS		
DATE	NAME	LIC. NO.



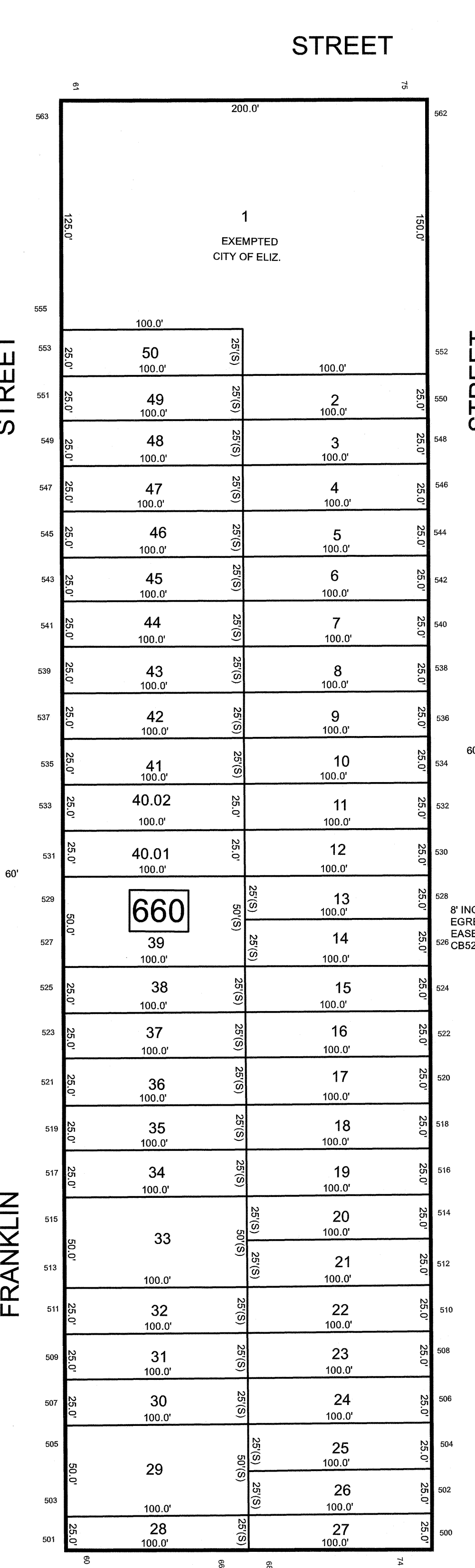
SEE SHEET 137



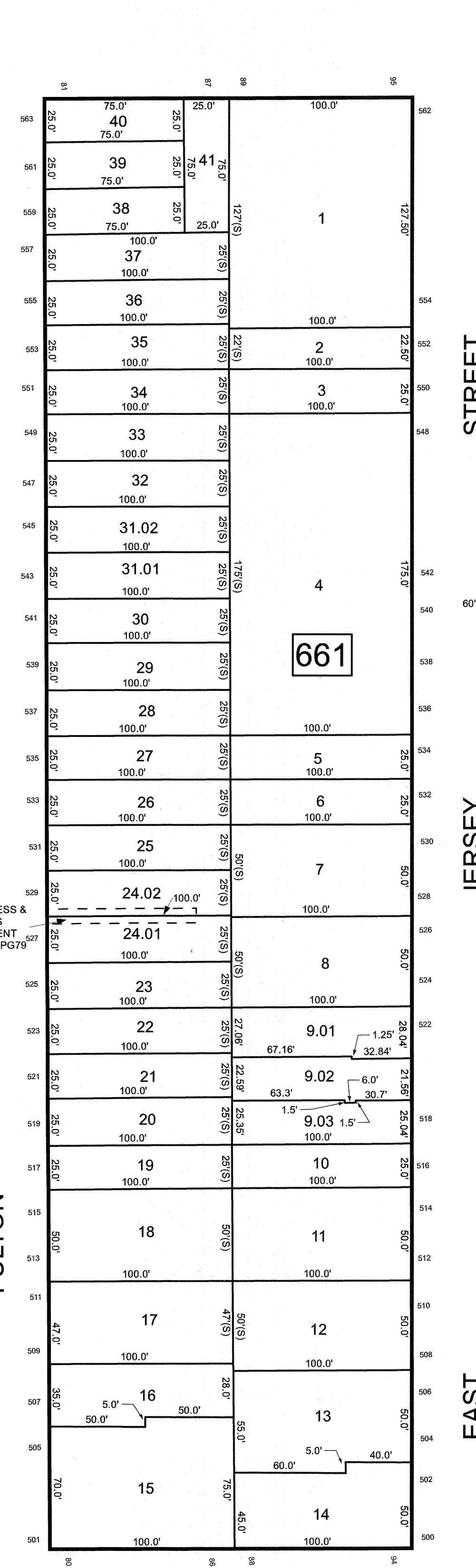
SEE SHEET 149



SEE SHEET 151



SEE SHEET 162



SEE SHEET 138

SEE SHEET 151

SEE SHEET 151

SEE SHEET 149

SEE SHEET 151

SEE SHEET 162

NEW JERSEY DEPARTMENT OF THE TREASURY
DIVISION OF TAXATION
 APPROVED AS A TAX MAP PURSUANT TO THE AUTHORITY OF
 N.J.S.A. 54:1-15 AND N.J.S.A. 54:15-1
 FOR THE DIRECTOR, DIVISION OF TAXATION

TAX MAP
CITY OF ELIZABETH
 UNION COUNTY NEW JERSEY
 SCALE: 1" = 50' FEB. 15, 2019
GLEN J. LLOYD
 N.J. PROFESSIONAL LAND SURVEYOR LIC. #GS037598
 MASER CONSULTING PA
 331 NEWMAN SPRINGS ROAD, SUITE 203
 RED BANK, NJ 07701

DATE **MAR 3 1 2022** SERIAL NO. **1129**

THIS MAP HAS BEEN DRAWN USING COMPUTER AIDED DRAFTING/DESIGN (CAD/D)