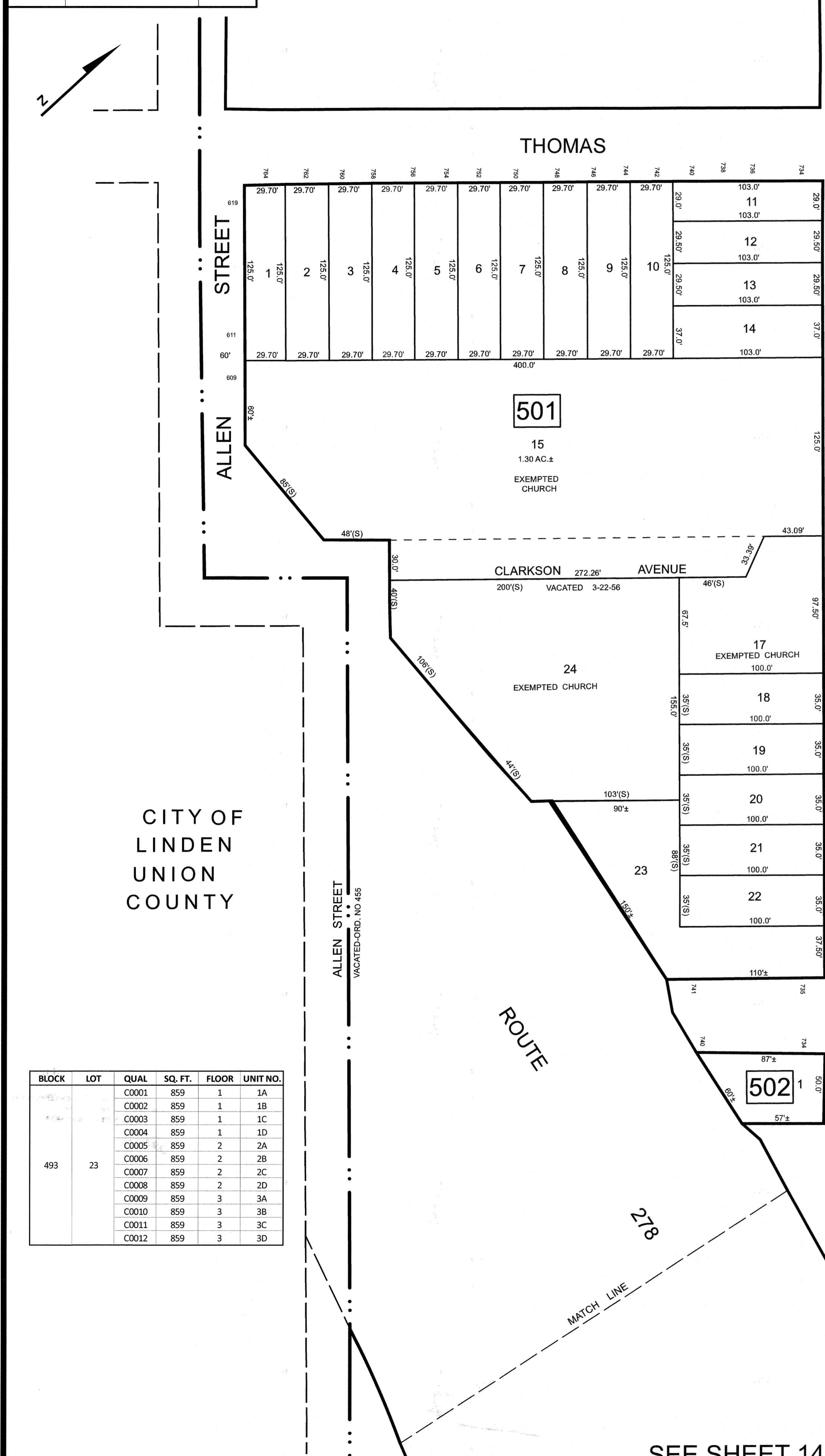
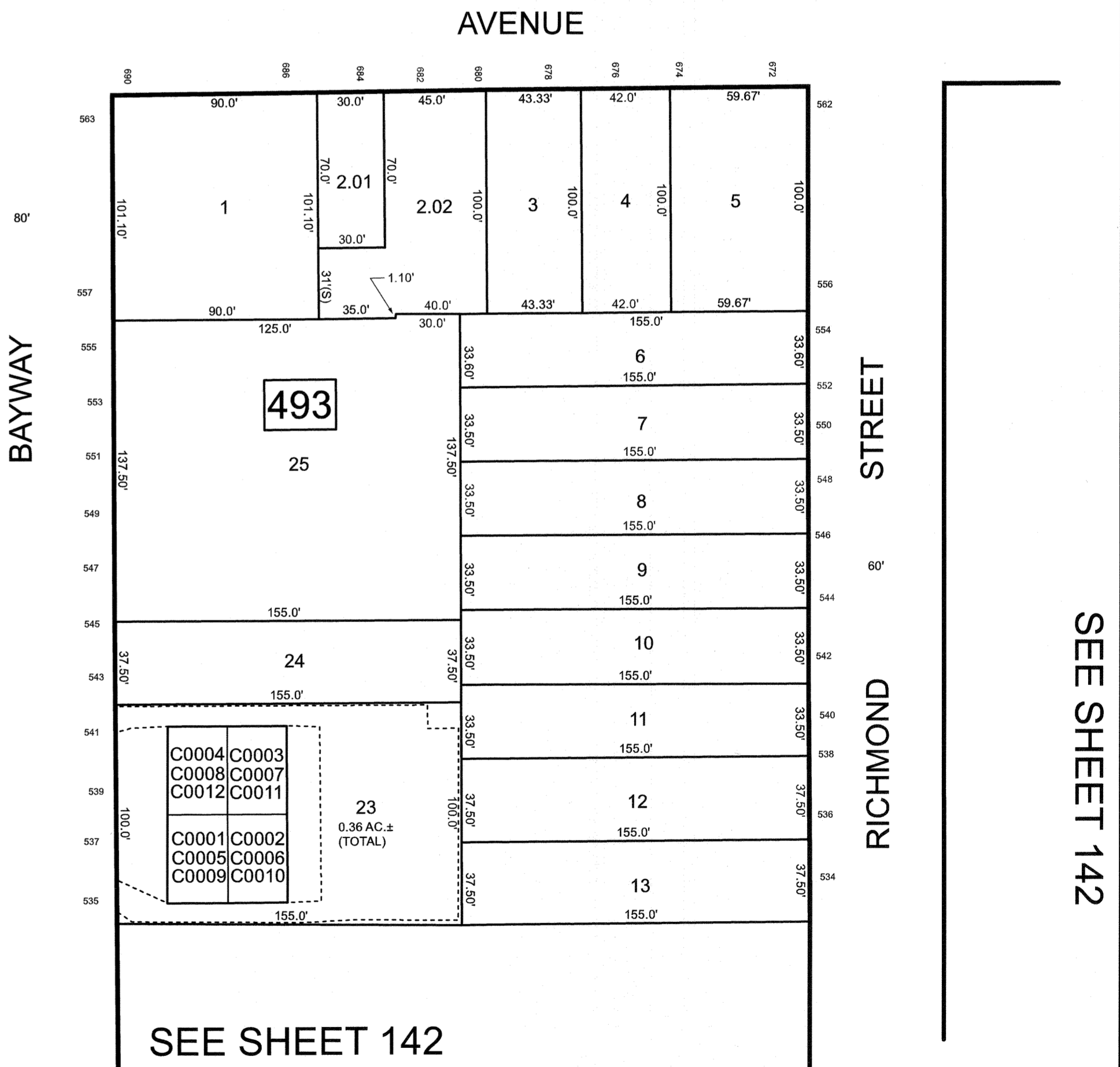
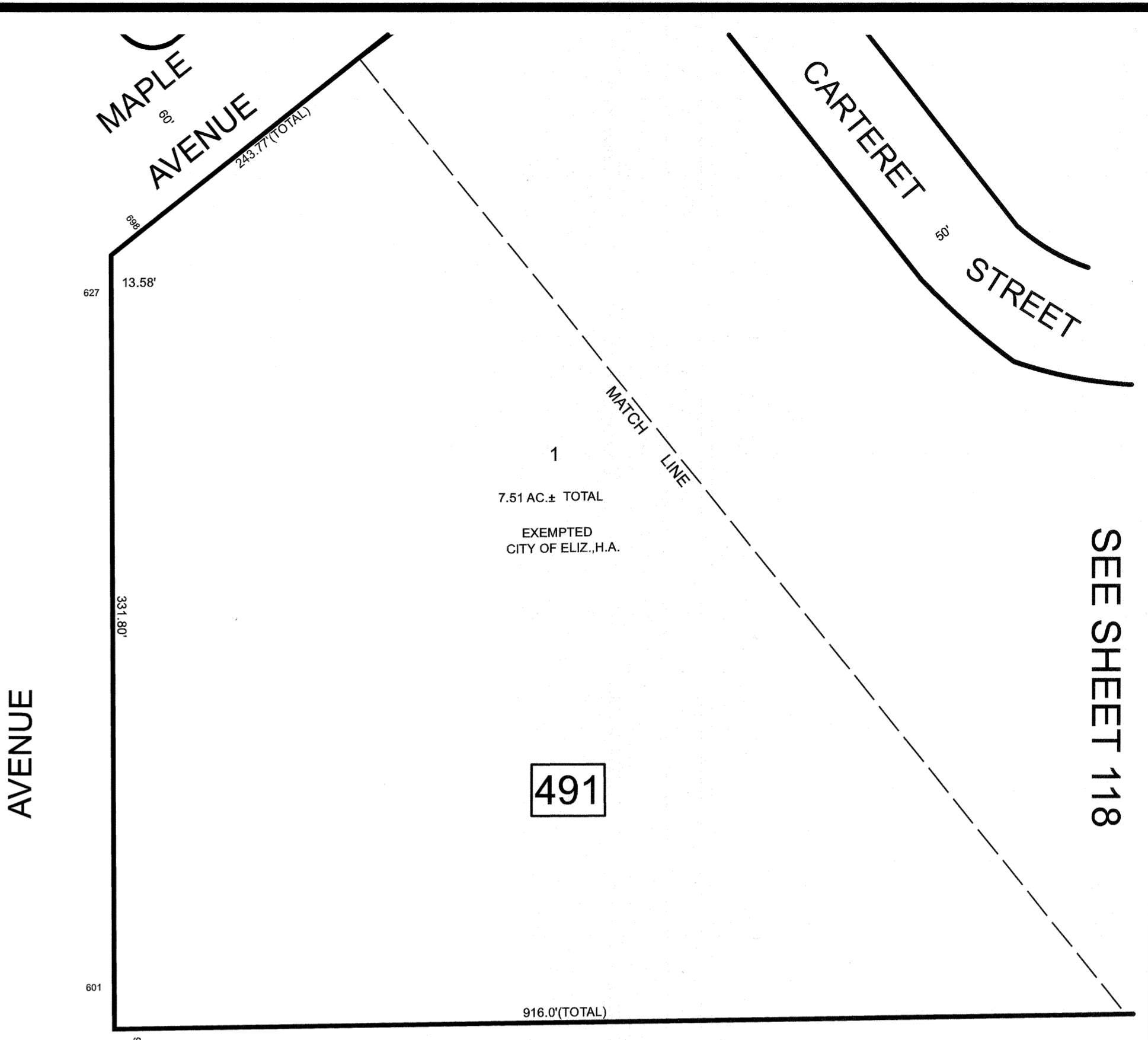
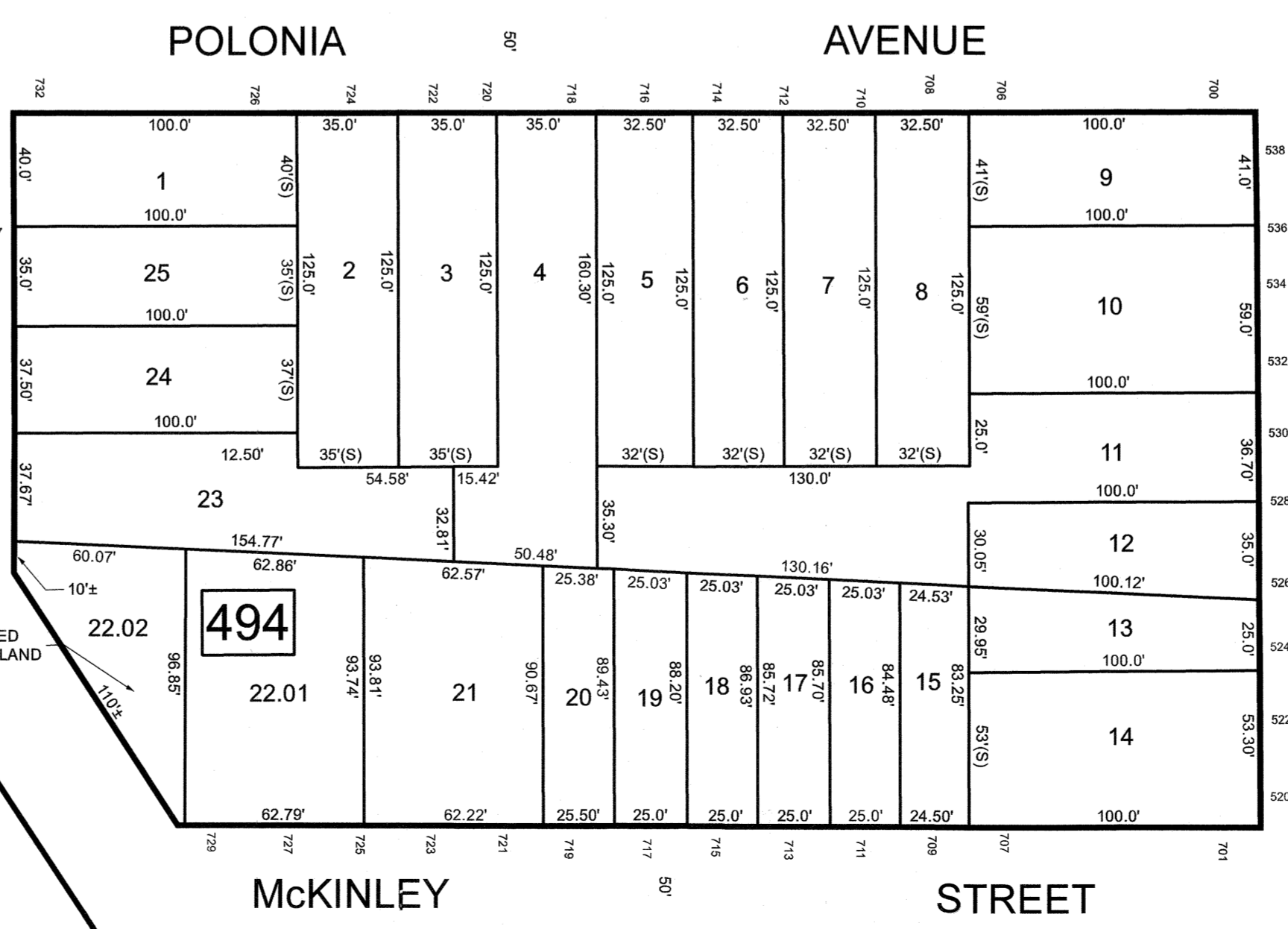
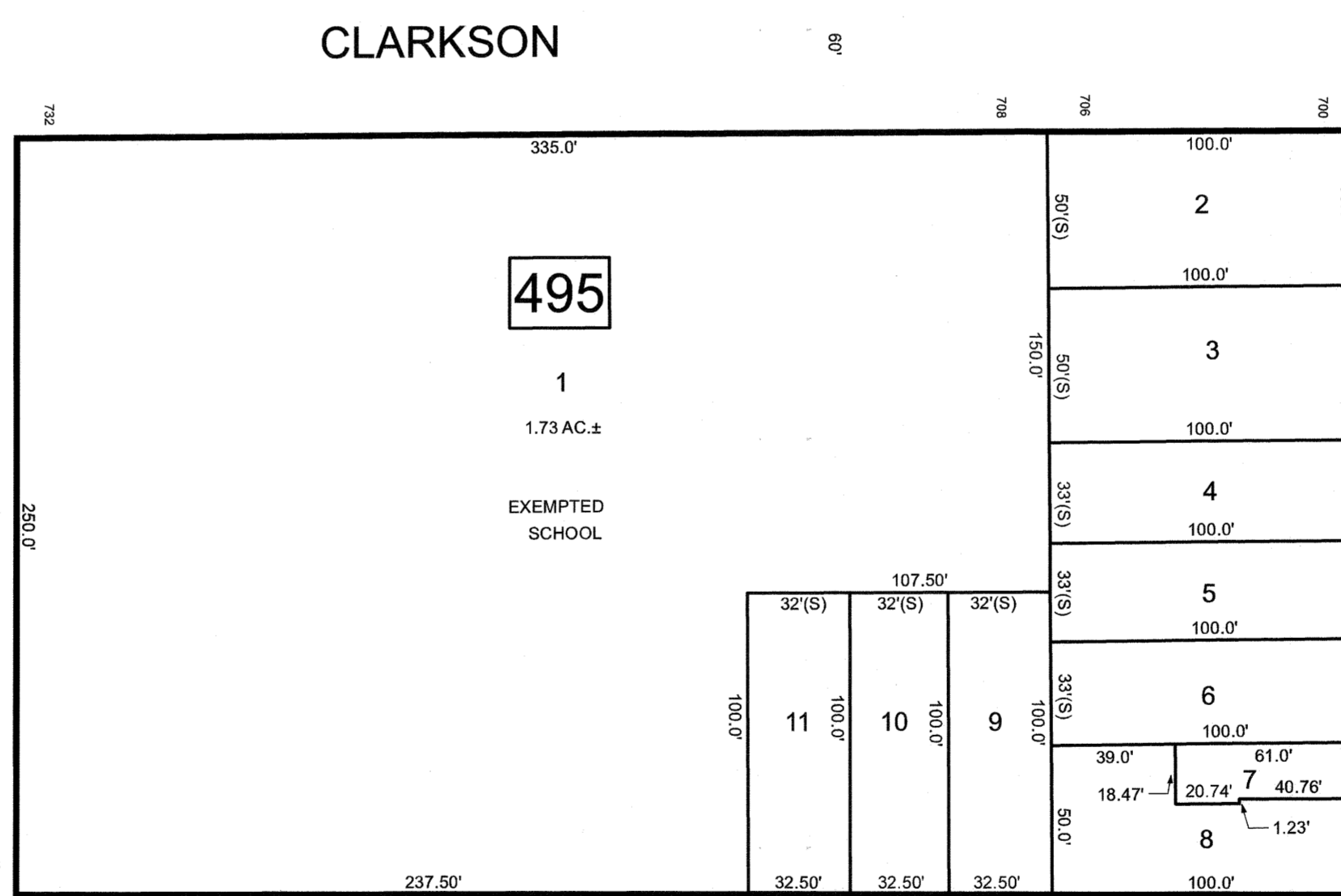
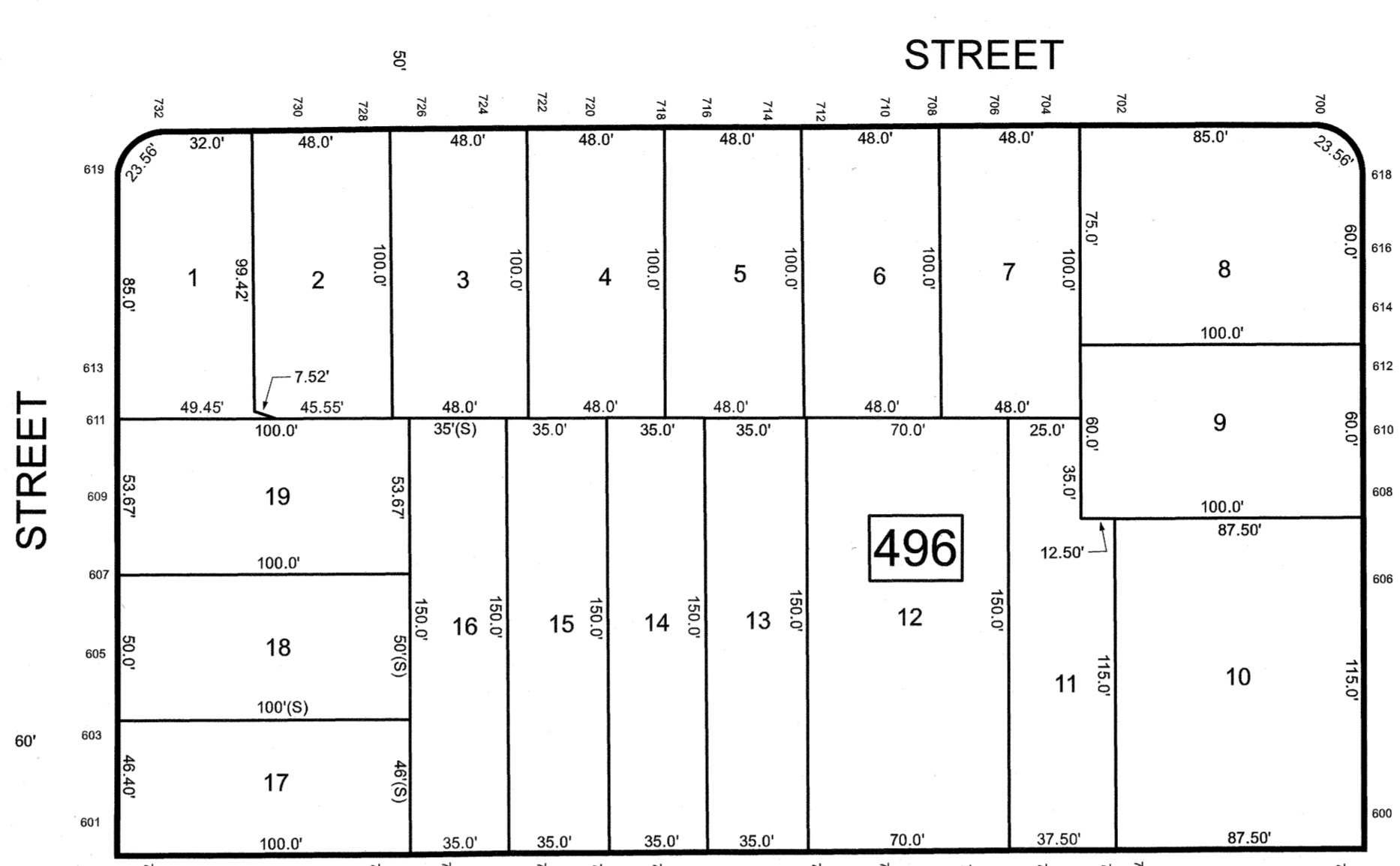


REVISIONS		
DATE	NAME	LIC. NO.



SEE SHEET 117




BLOCK	LOT	QUAL	SQ. FT.	FLOOR	UNIT NO.
493	23	C0001	859	1	1A
		C0002	859	1	1B
		C0003	859	1	1C
		C0004	859	1	1D
		C0005	859	2	2A
		C0006	859	2	2B
		C0007	859	2	2C
		C0008	859	2	2D
		C0009	859	3	3A
		C0010	859	3	3B
		C0011	859	3	3C
		C0012	859	3	3D

SEE SHEET 144

SEE SHEET 118

SEE SHEET 142

NEW JERSEY DEPARTMENT OF THE TREASURY
 DIVISION OF TAXATION
 APPROVED AS A TAX MAP PURSUANT TO THE AUTHORITY OF
 N.J.S.A. 84:18 AND N.J.S.A. 84B:1
 FOR THE DIRECTOR, DIVISION OF TAXATION



DATE MAR 3 1 2022 SERIAL NO. 1129

TAX MAP
 CITY OF ELIZABETH
 UNION COUNTY NEW JERSEY
 SCALE: 1" = 50' FEB. 15, 2019
GLEN J. LLOYD
 N.J. PROFESSIONAL LAND SURVEYOR LIC. #GS037598
 MASER CONSULTING PA
 331 NEWMAN SPRINGS ROAD, SUITE 203
 RED BANK, NJ 07701

THIS MAP HAS BEEN DRAWN USING COMPUTER AIDED DRAFTING/DESIGN (CAD/D)