

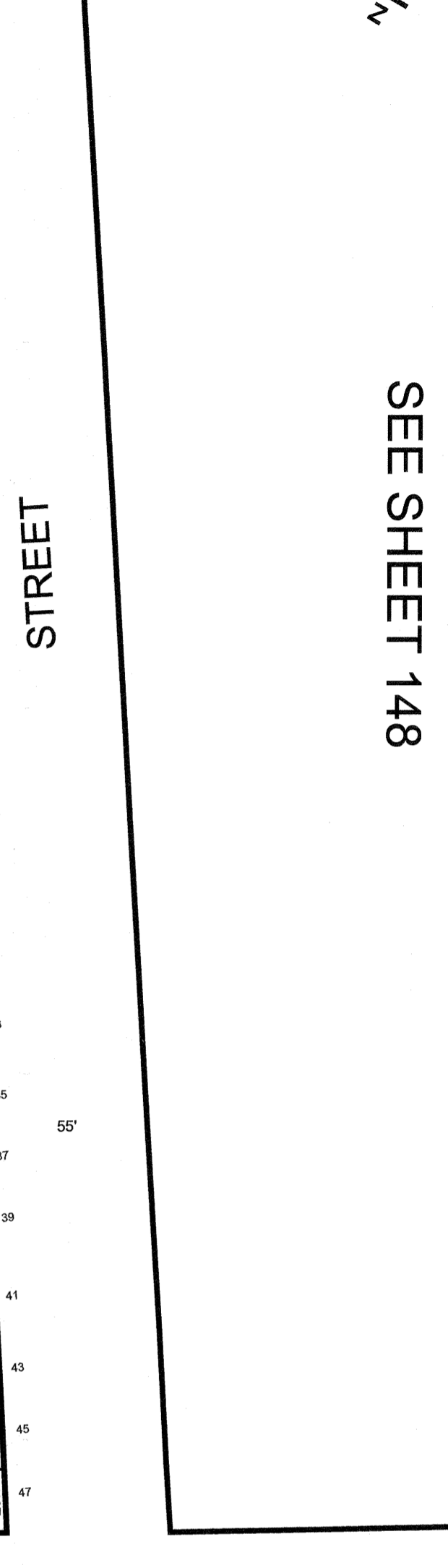
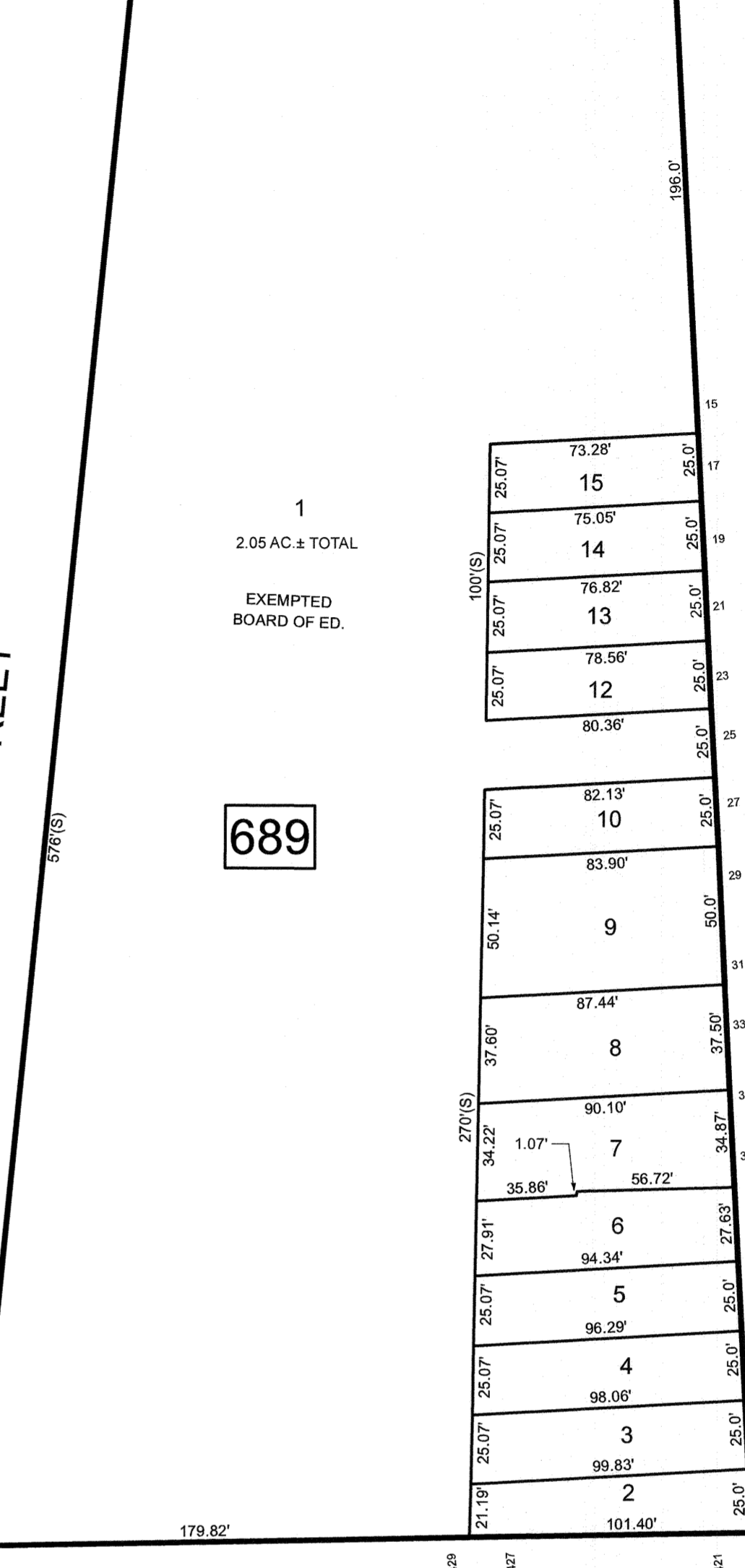
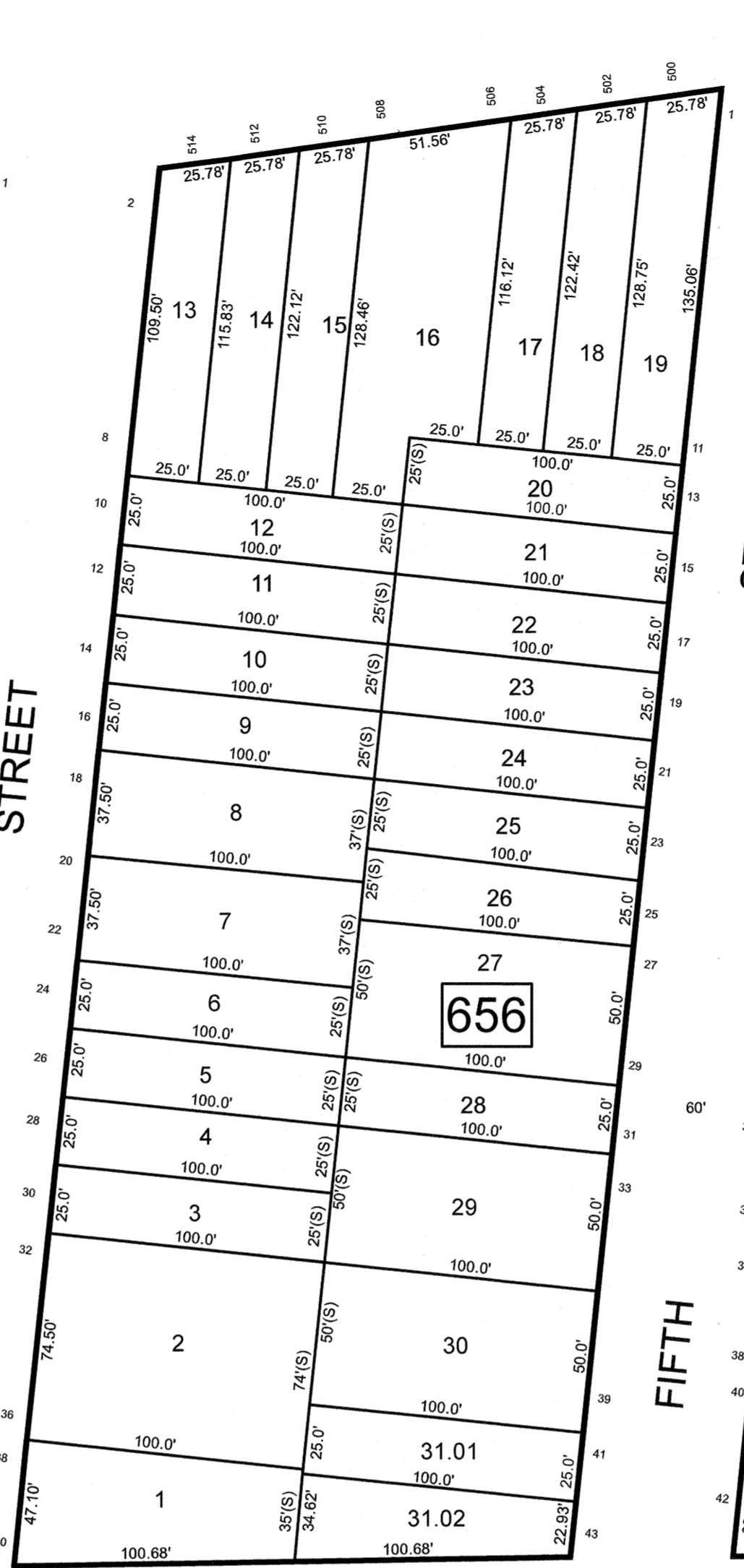
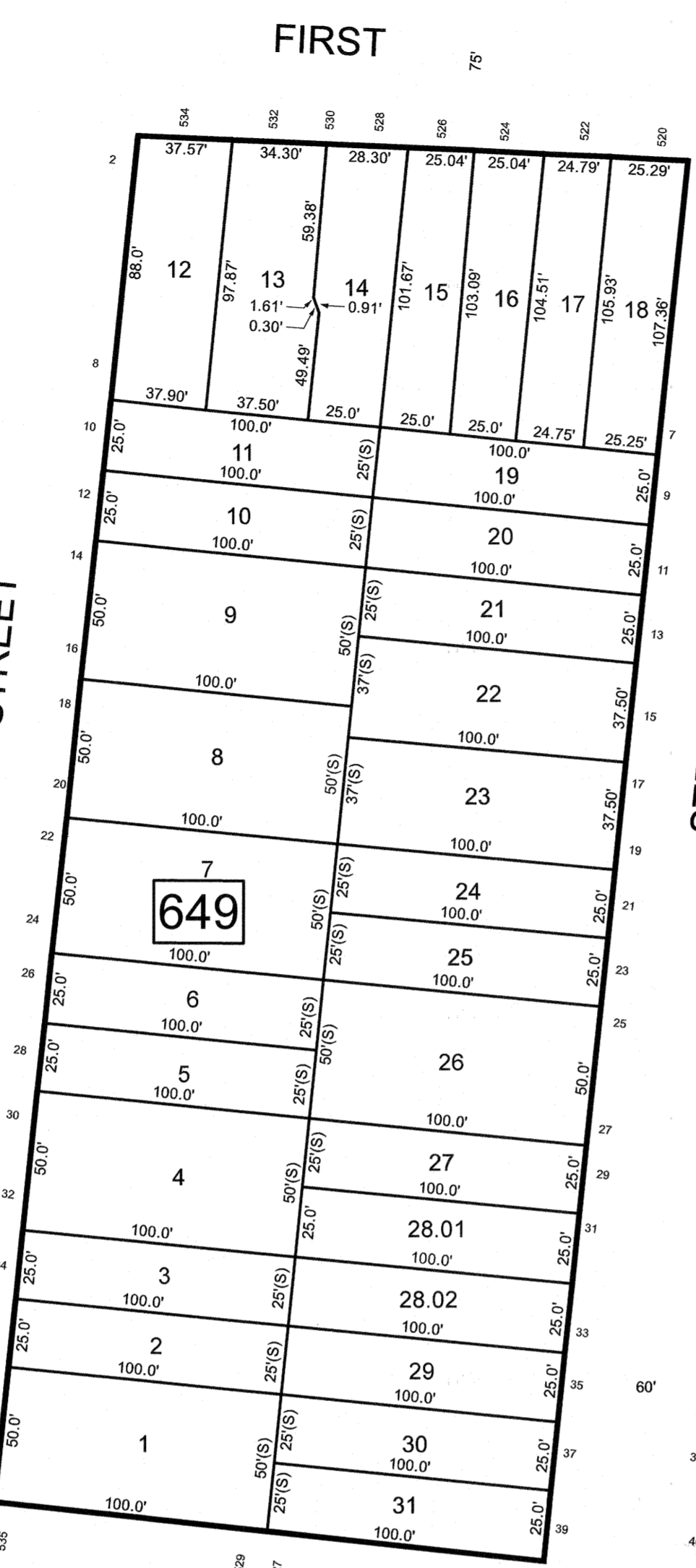
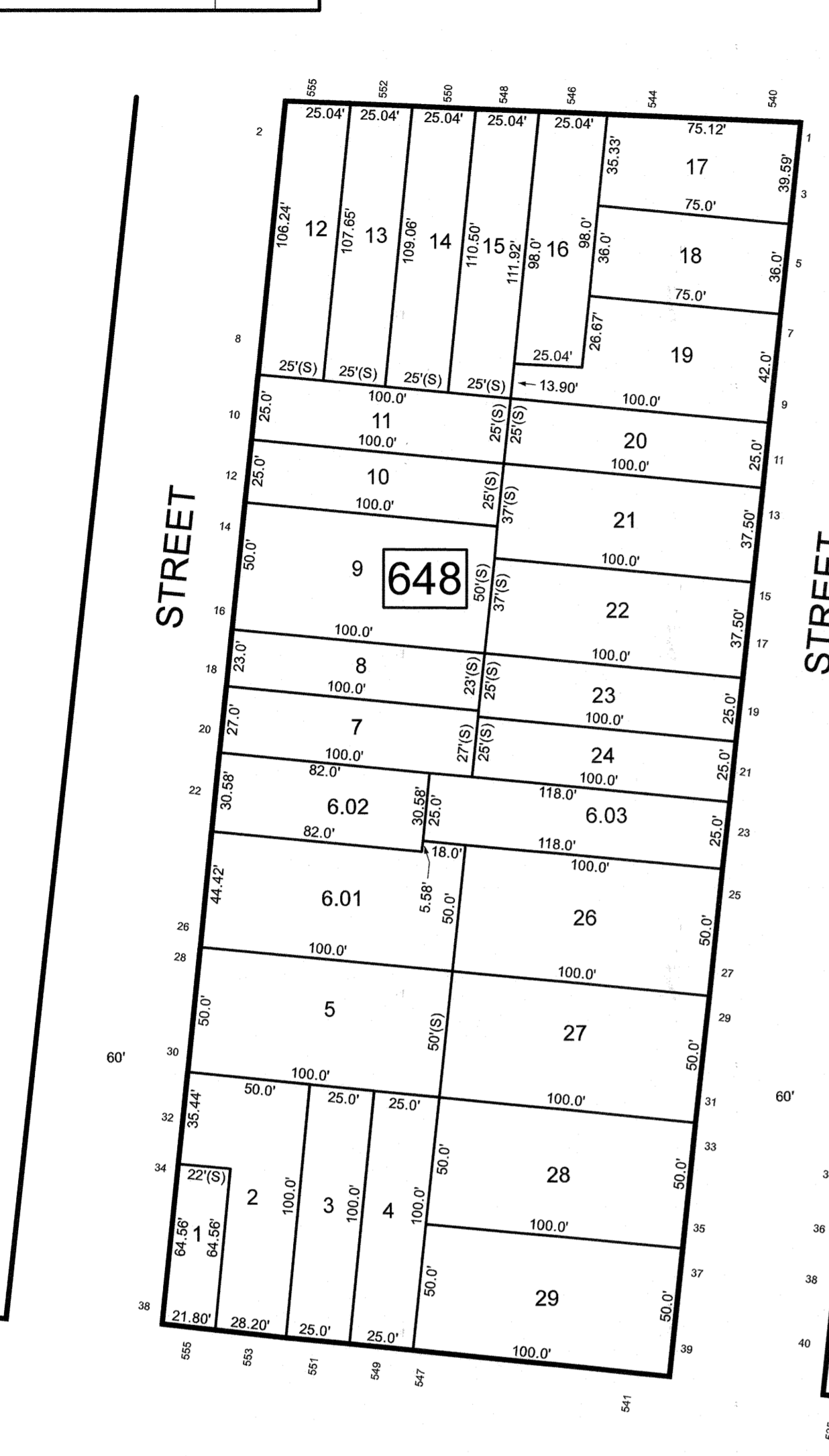
REVISIONS		
DATE	NAME	LIC. NO.

SEE SHEET 150

SEE SHEET 149

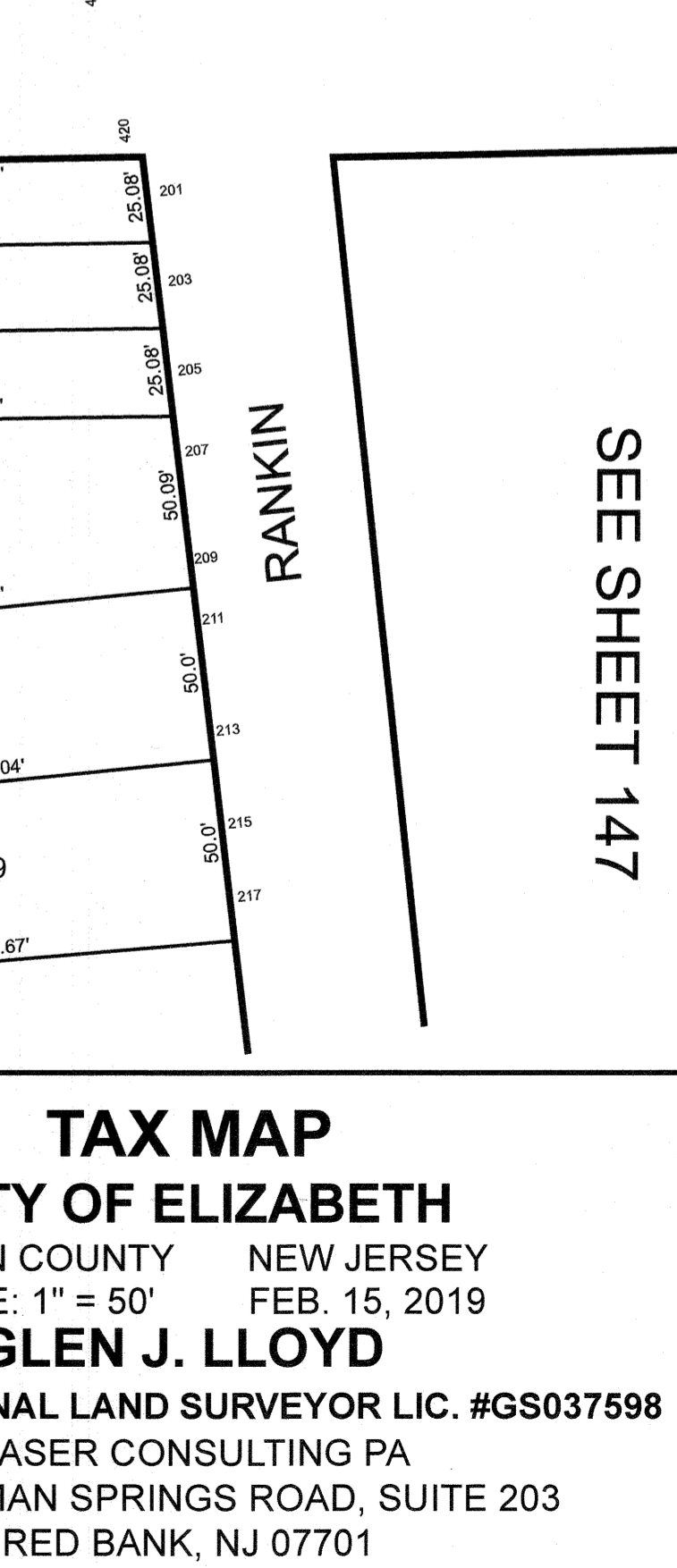
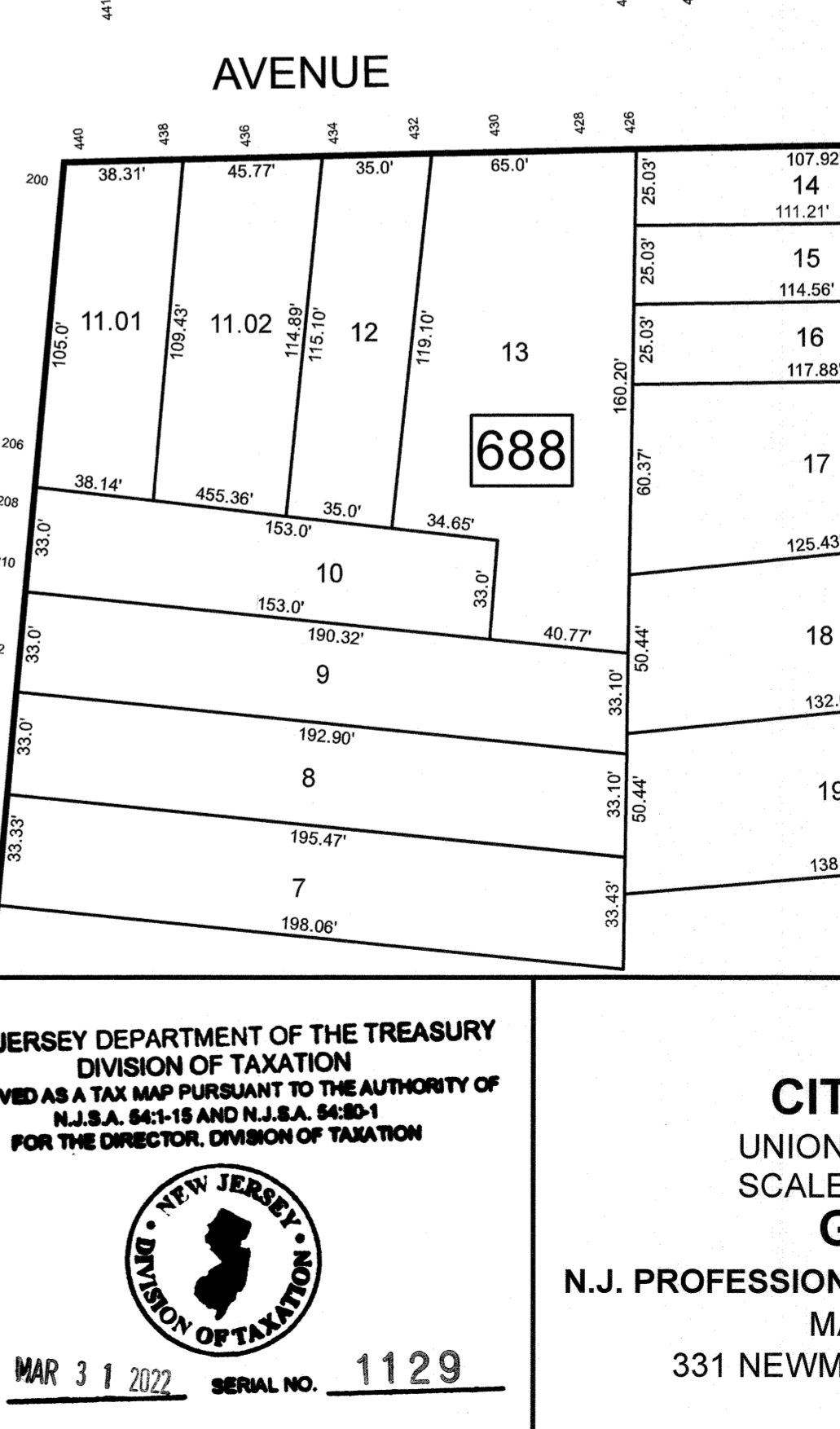
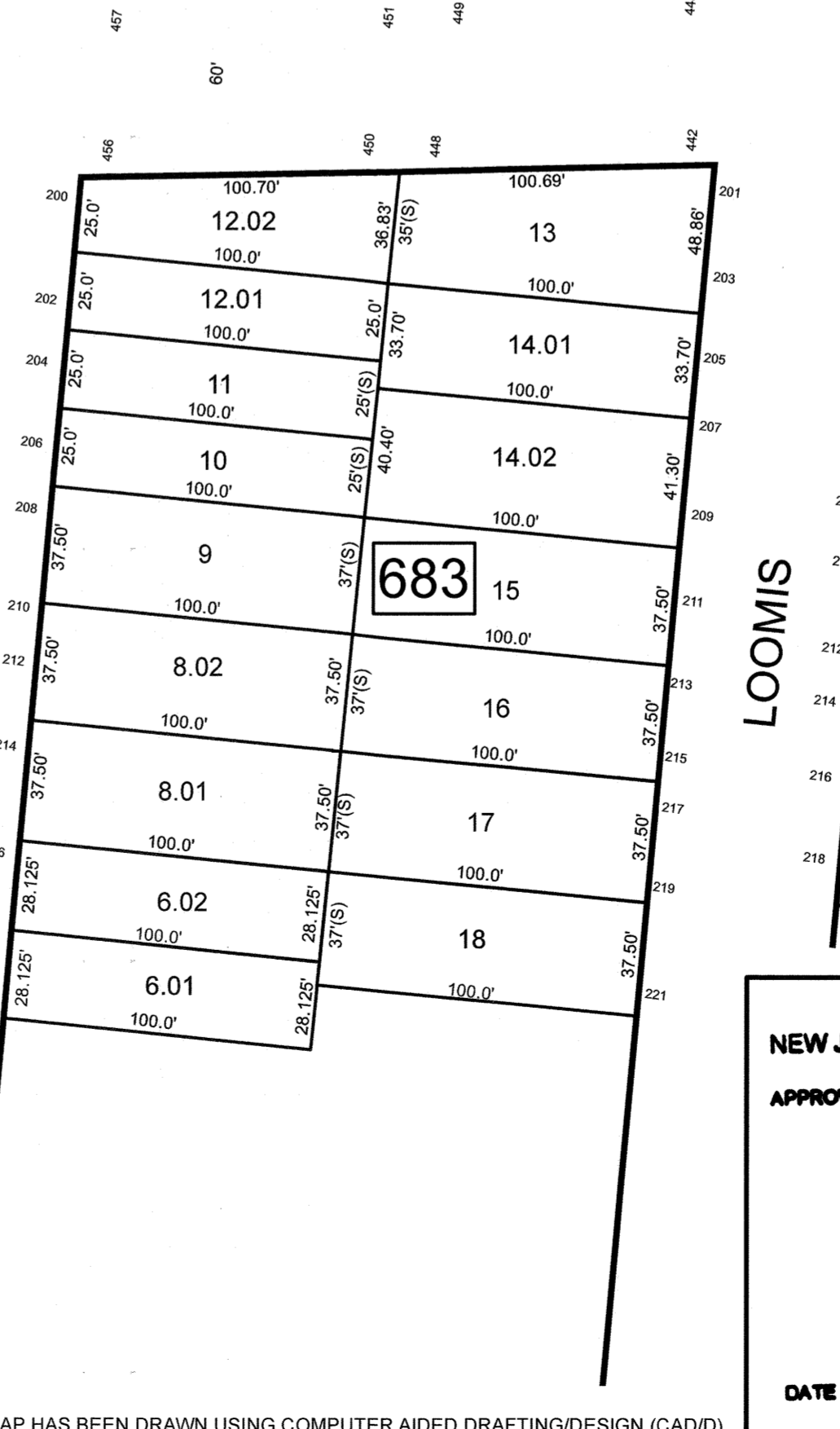
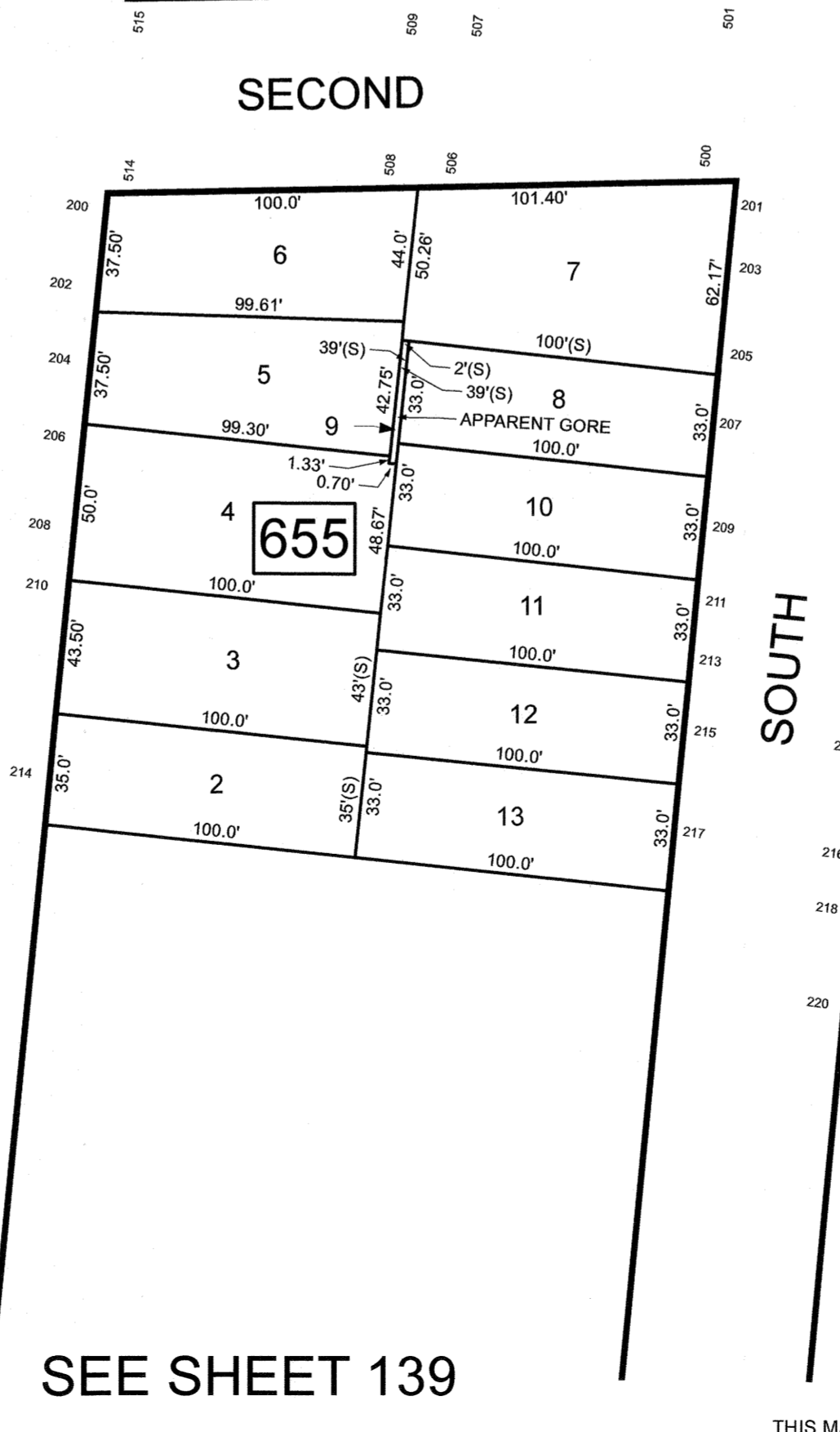
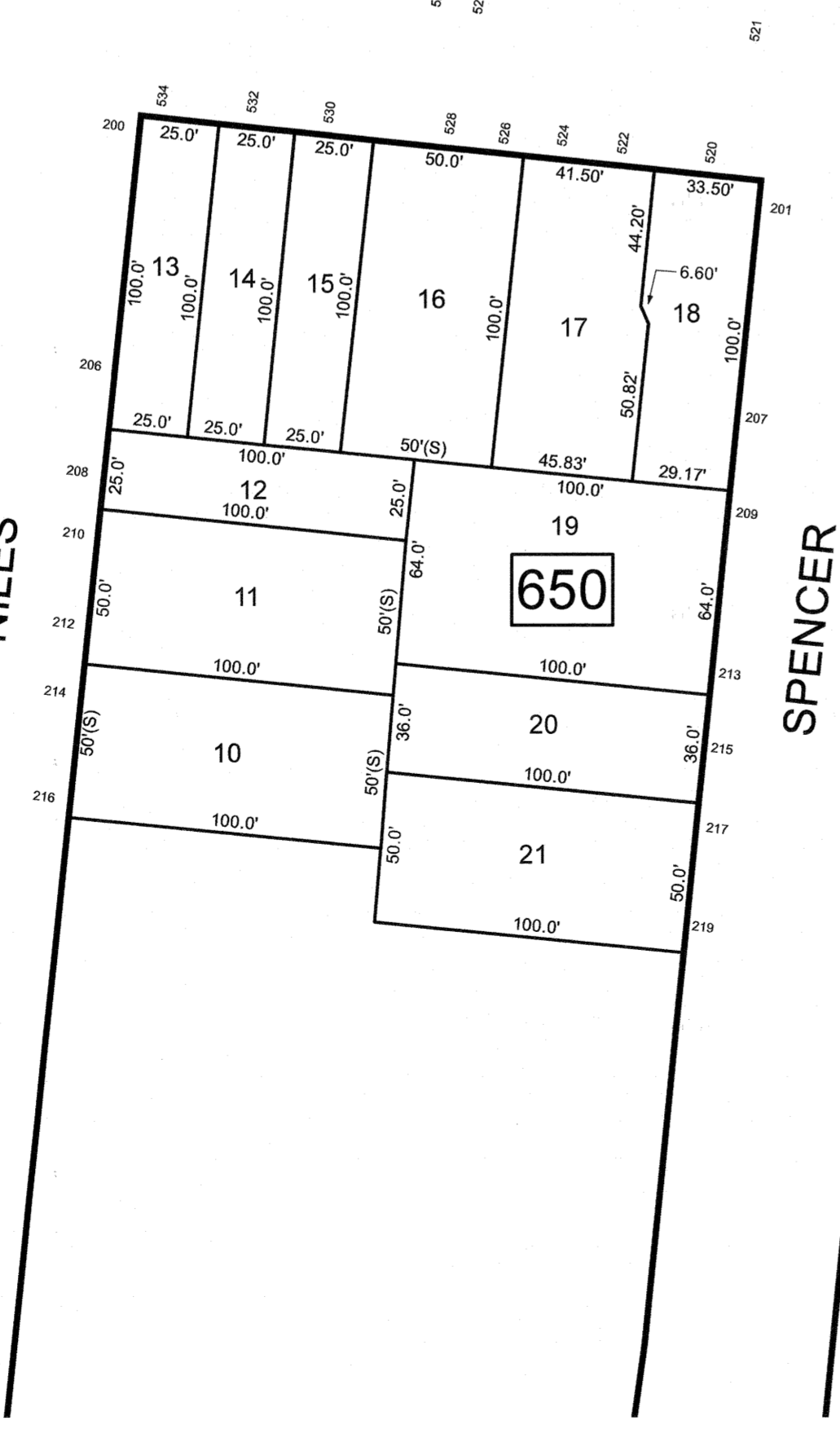
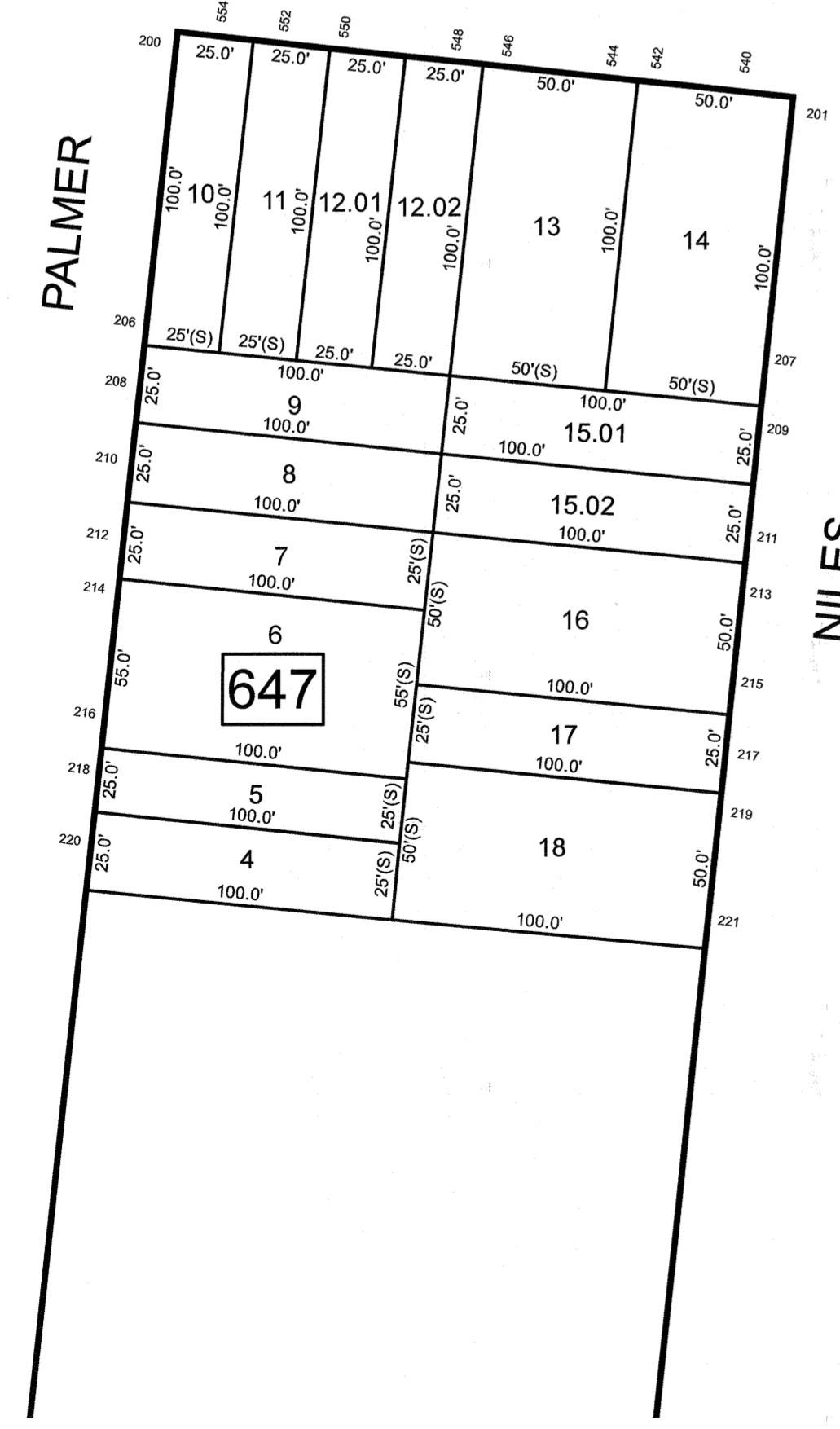
SEE SHEET 137

SEE SHEET 148



SEE SHEET 121


SEE SHEET 147



SEE SHEET 139

THIS MAP HAS BEEN DRAWN USING COMPUTER AIDED DRAFTING/DESIGN (CAD/D)

NEW JERSEY DEPARTMENT OF THE TREASURY
 DIVISION OF TAXATION
 APPROVED AS A TAX MAP PURSUANT TO THE AUTHORITY OF
 N.J.S.A. 54:1-15 AND N.J.S.A. 54:20-1
 FOR THE DIRECTOR, DIVISION OF TAXATION



DATE **MAR 31 2022** SERIAL NO. **1129**

TAX MAP
CITY OF ELIZABETH
 UNION COUNTY NEW JERSEY
 SCALE: 1" = 50' FEB. 15, 2019
GLEN J. LLOYD
 N.J. PROFESSIONAL LAND SURVEYOR LIC. #GS037598
 MASER CONSULTING PA
 331 NEWMAN SPRINGS ROAD, SUITE 203
 RED BANK, NJ 07701