

TAX MAP
CITY OF ELIZABETH
 UNION COUNTY NEW JERSEY
 SCALE: 1" = 50' FEB. 15, 2019
GLEN J. LLOYD
 N.J. PROFESSIONAL LAND SURVEYOR LIC. #GS037598
 MASER CONSULTING PA
 331 NEWMAN SPRINGS ROAD, SUITE 203
 RED BANK, NJ 07701

SEE SHEET 133

627

2.02
11.98 AC.± TOTAL

1007

4
2.19 AC.± TOTAL

3.02
10.25 AC.± TOTAL

ELIZABETH EXTENSION
BRANCH- MAIN LINE
(FORMERLY C.R.R. CO. OF NJ)

CONRAIL

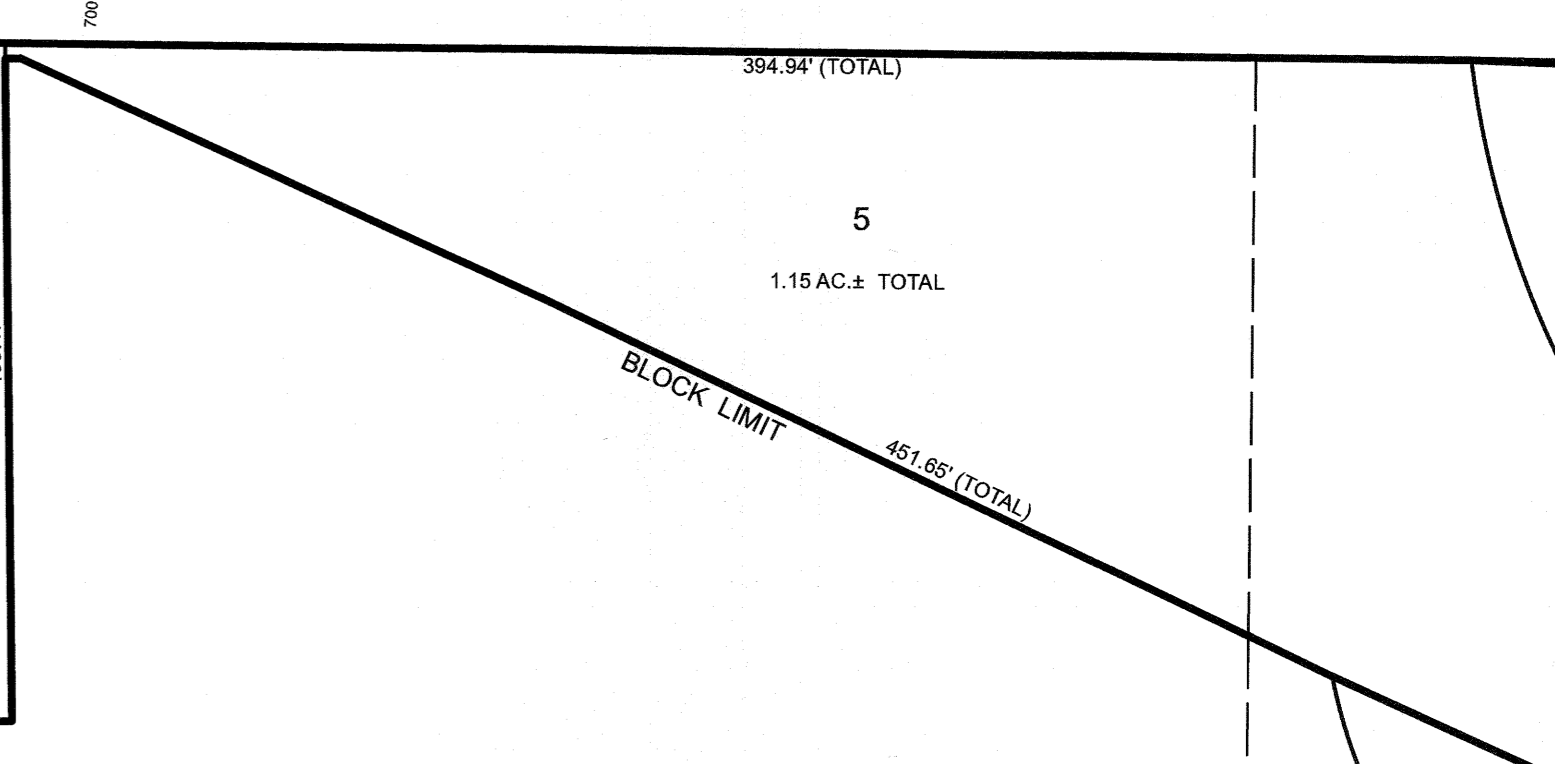
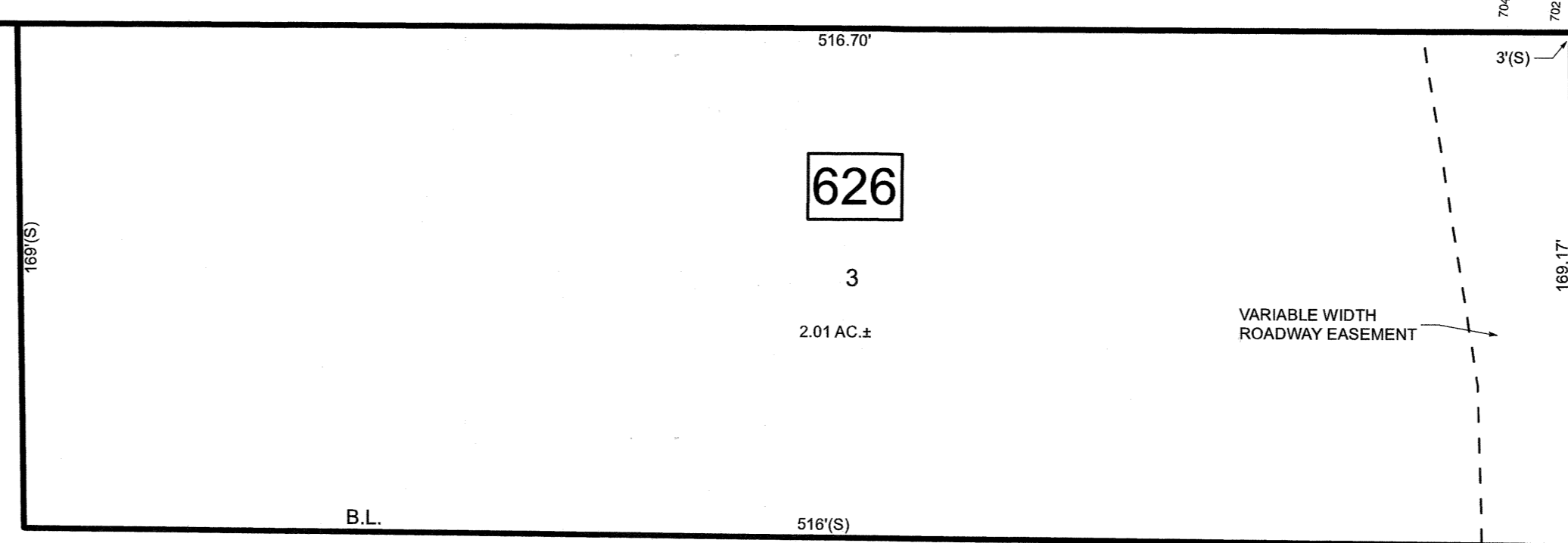
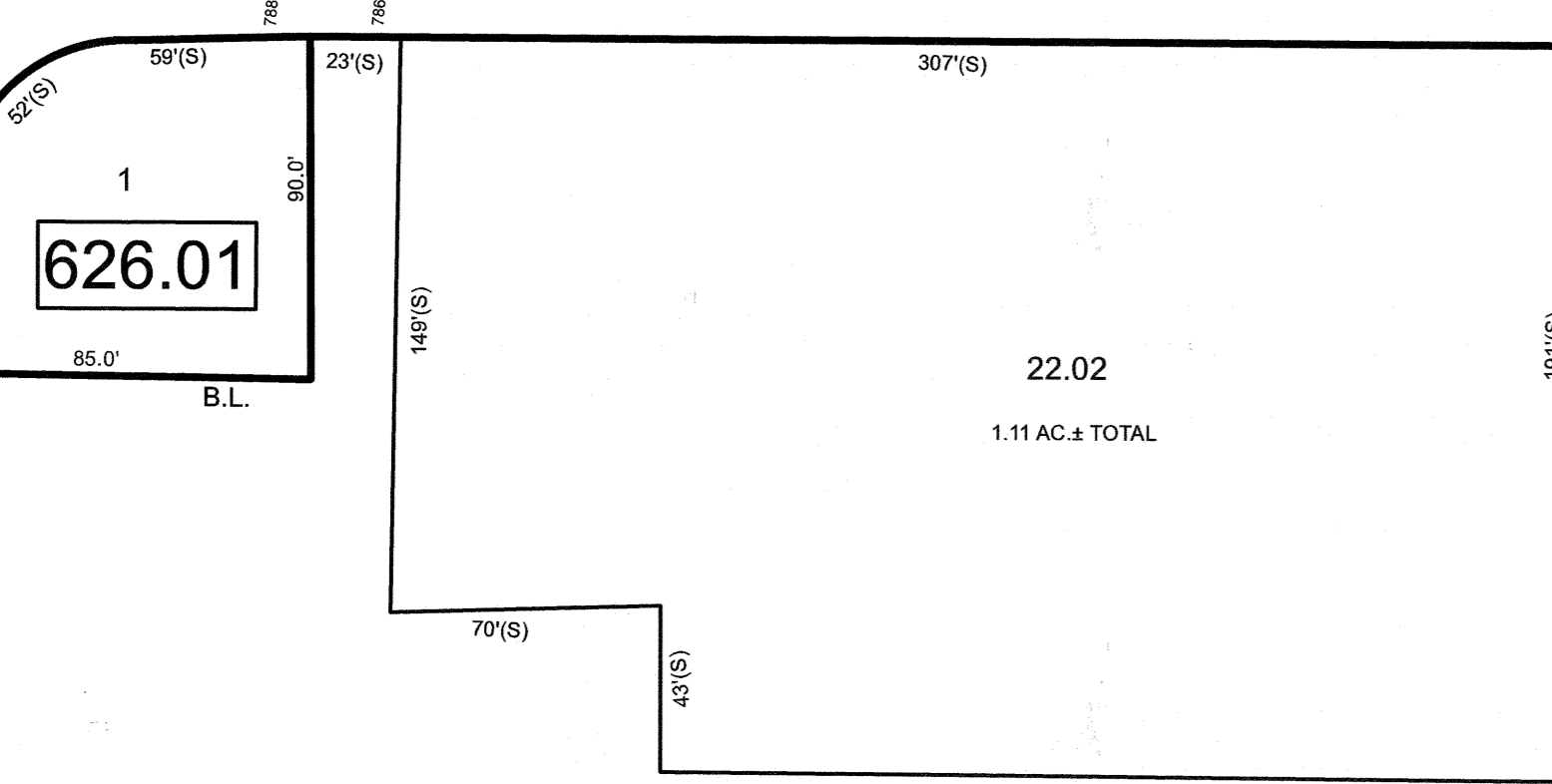
ANNA STREET

SEE SHEET 126

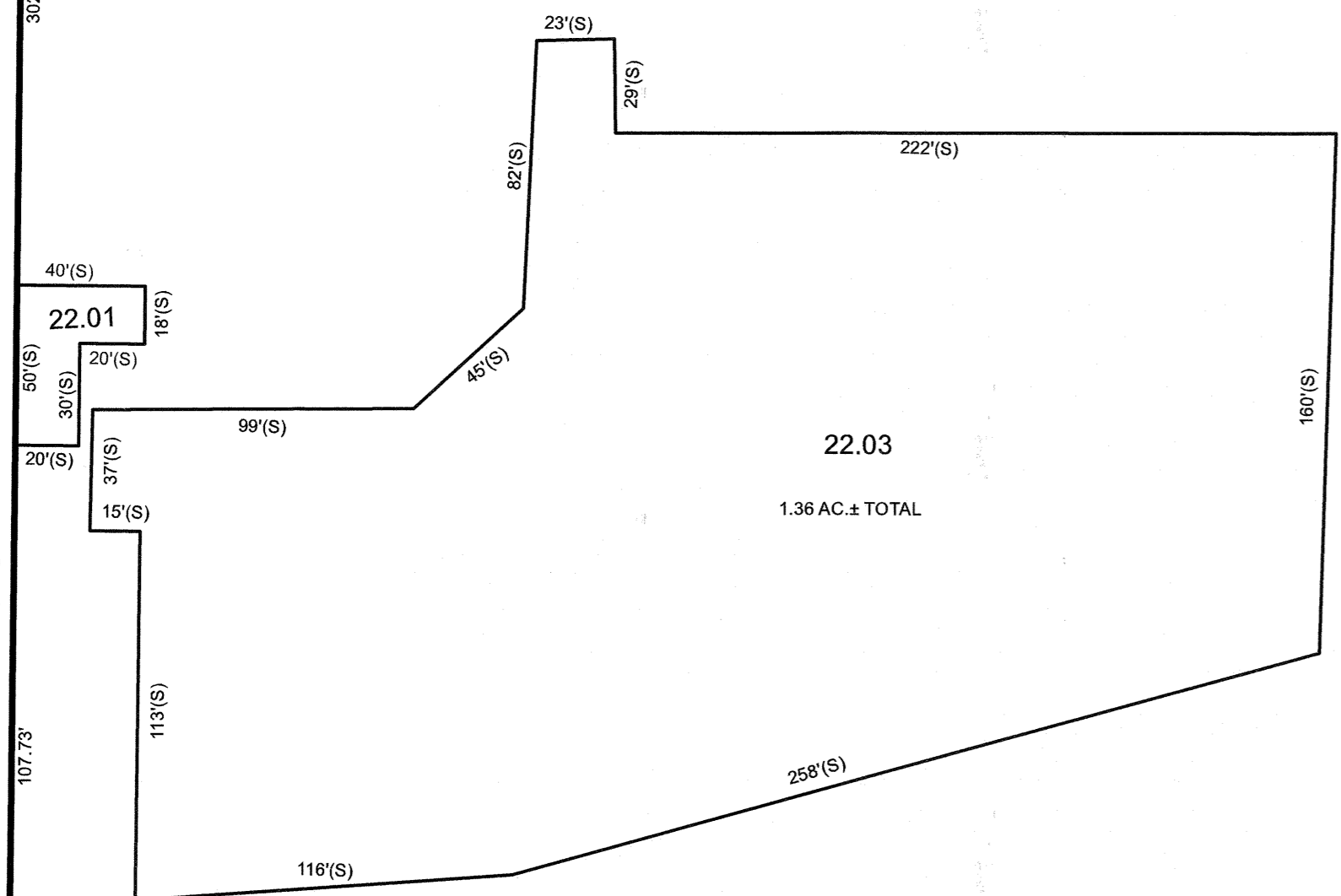
STREET

YORK

STREET



22
24.91 AC.± TOTAL
CL. II



1010

20
9.64 AC.± TOTAL

(FORMERLY C.R.R. CO. OF N.J.) MAIN LINE

CONRAIL (CSX)

CL. I

3963.0' (TOTAL)
4157' (TOTAL)

4221' (TOTAL)

SEE SHEET 135

MAGNOLIA AVENUE

DIVISION

WIDTH VARIES

BOND SHEET

SEE SHEET 153

REVISIONS		
DATE	NAME	LIC. NO.

SEE SHEET 135

SEE SHEET 152

NEW JERSEY DEPARTMENT OF THE TREASURY
 DIVISION OF TAXATION
 APPROVED AS A TAX MAP PURSUANT TO THE AUTHORITY OF
 N.J.S.A. 84:1-18 AND N.J.S.A. 84:2D-1
 FOR THE DIRECTOR, DIVISION OF TAXATION



DATE MAR 31 2022 SERIAL NO. 1129

THIS MAP HAS BEEN DRAWN USING COMPUTER AIDED DRAFTING/DESIGN (CAD/D)