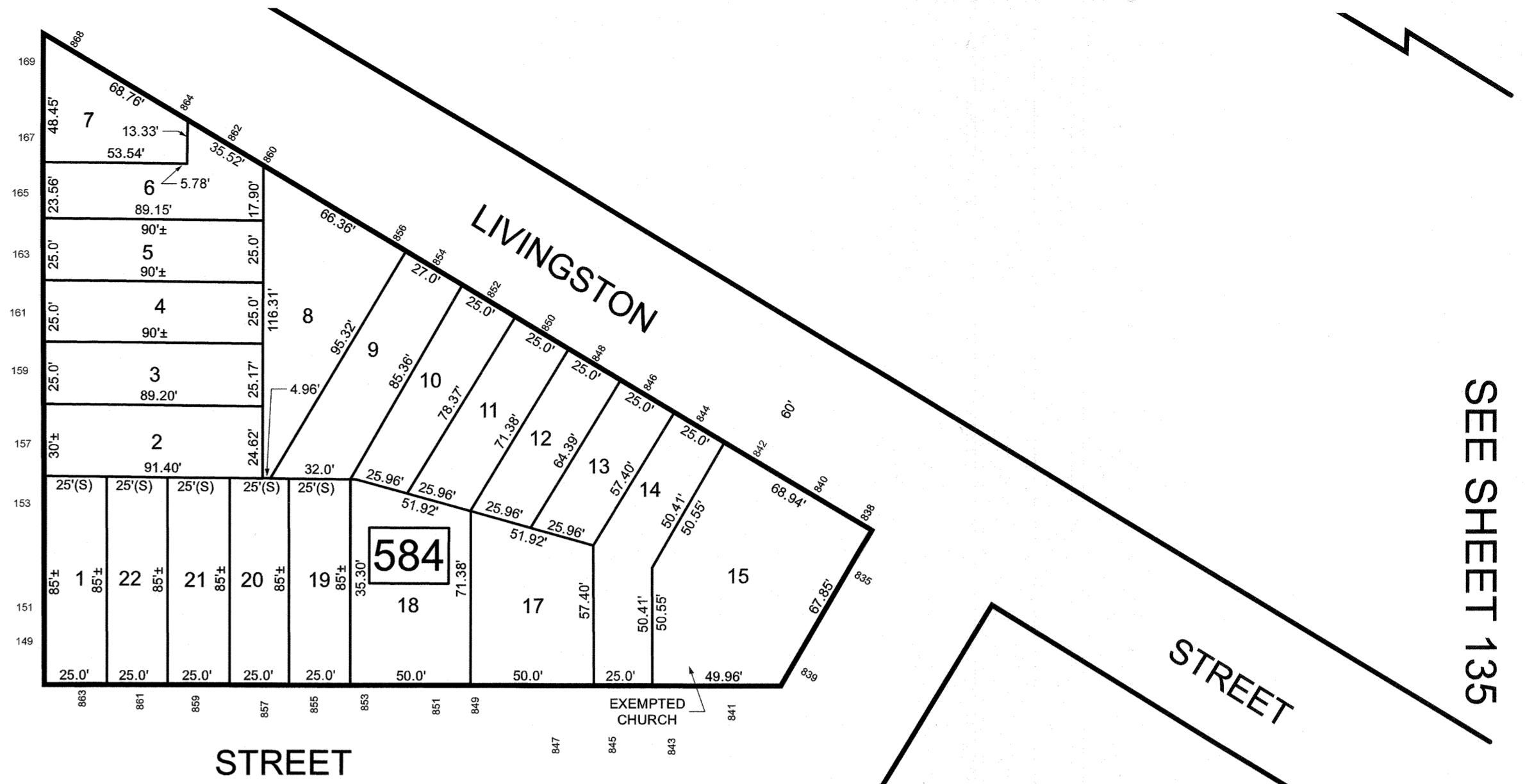


REVISIONS		
DATE	NAME	LIC. NO.

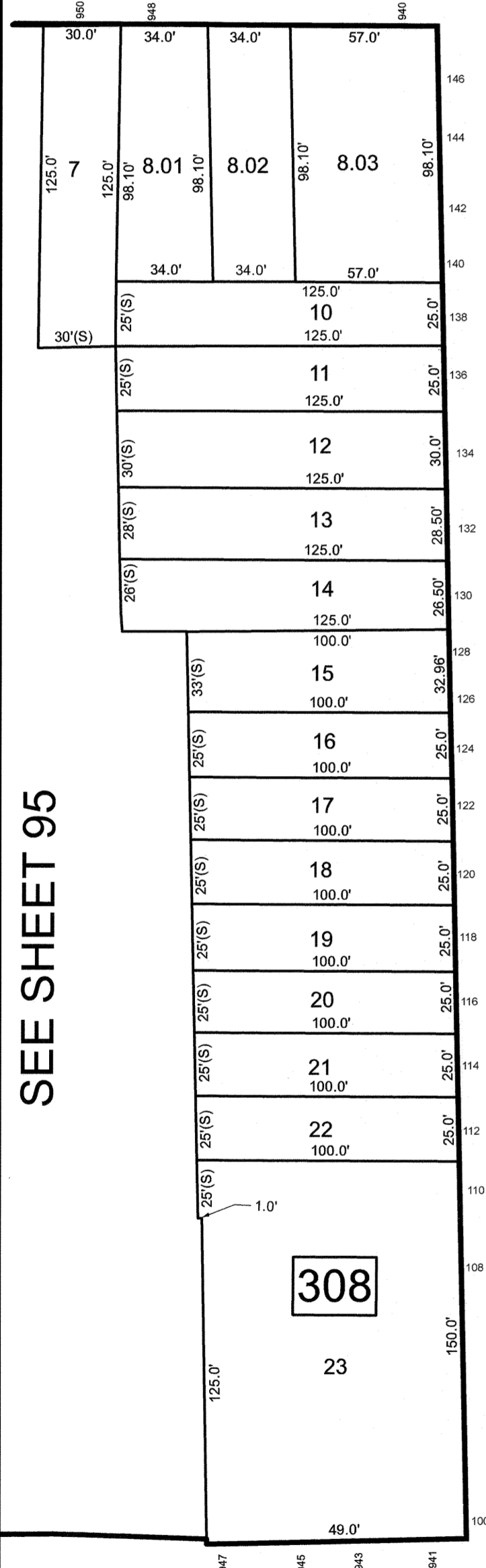
SEE SHEET 111



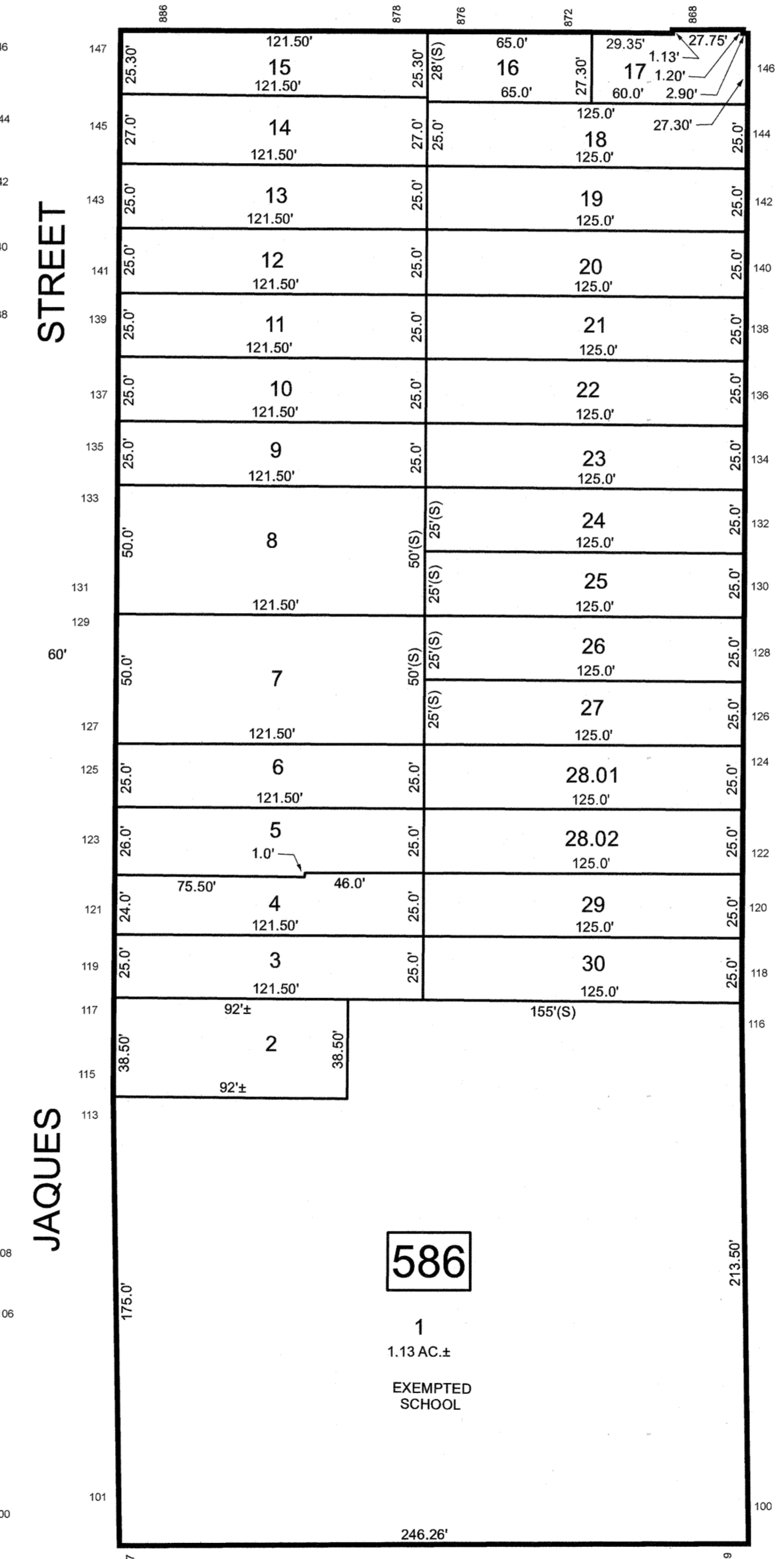
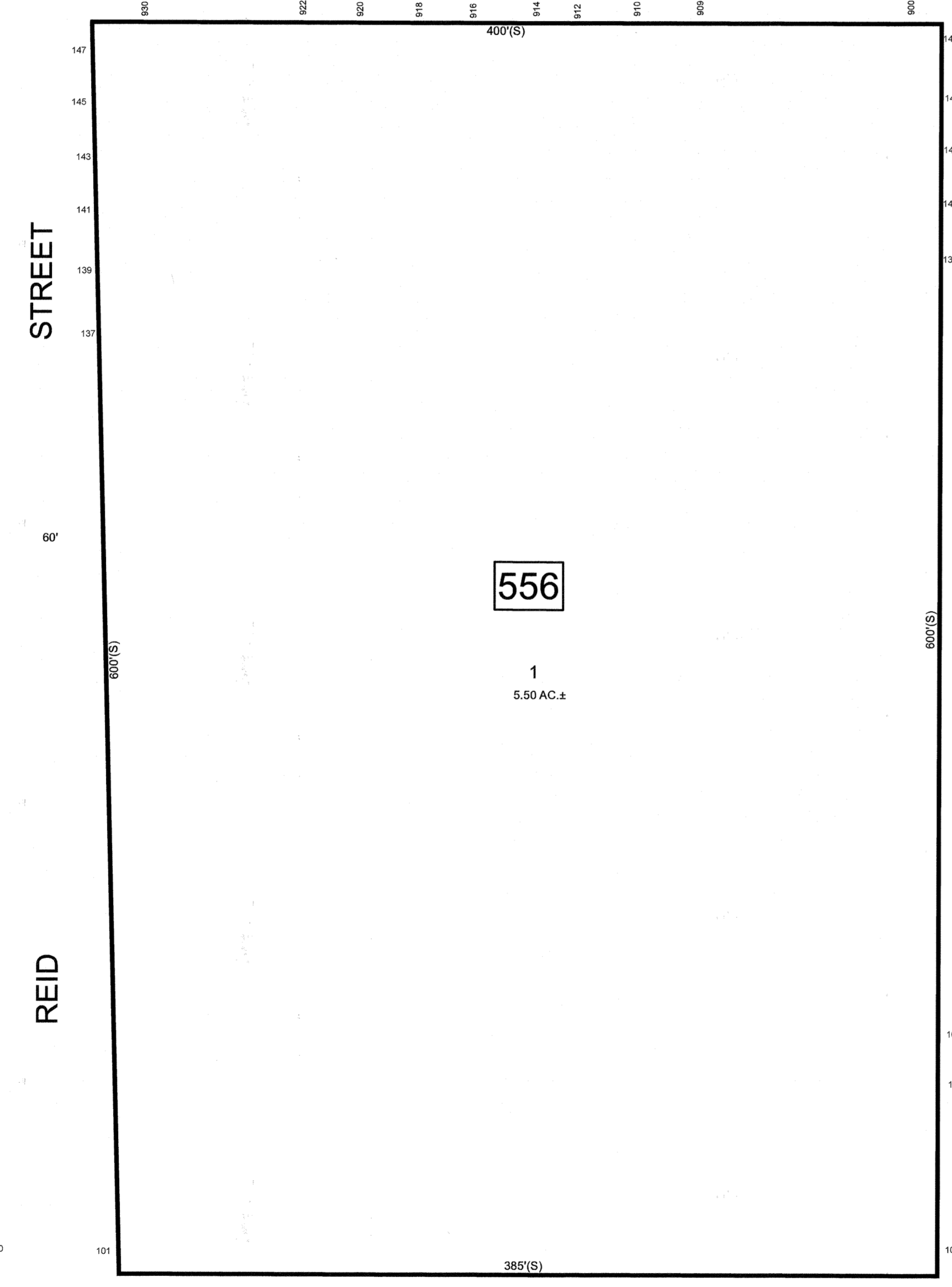
SEE SHEET 125



SEE SHEET 135

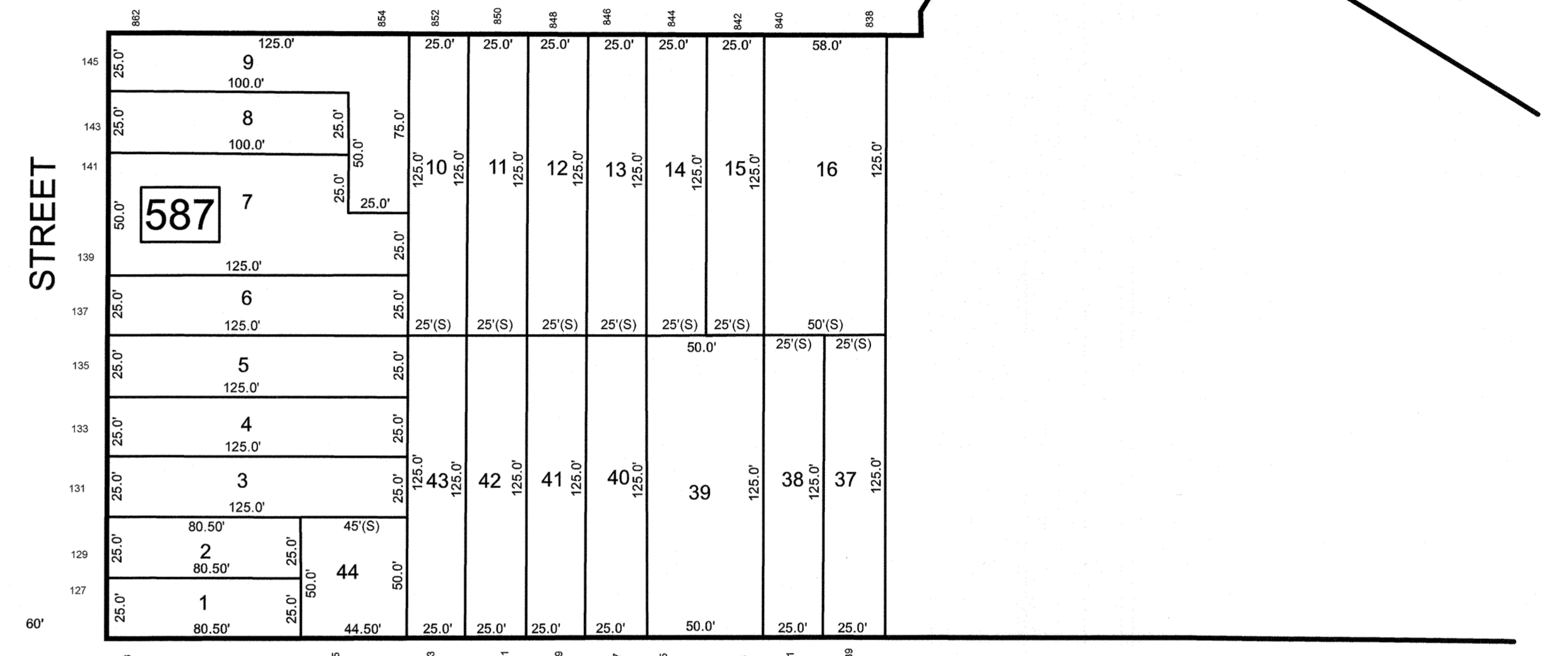


SEE SHEET 95

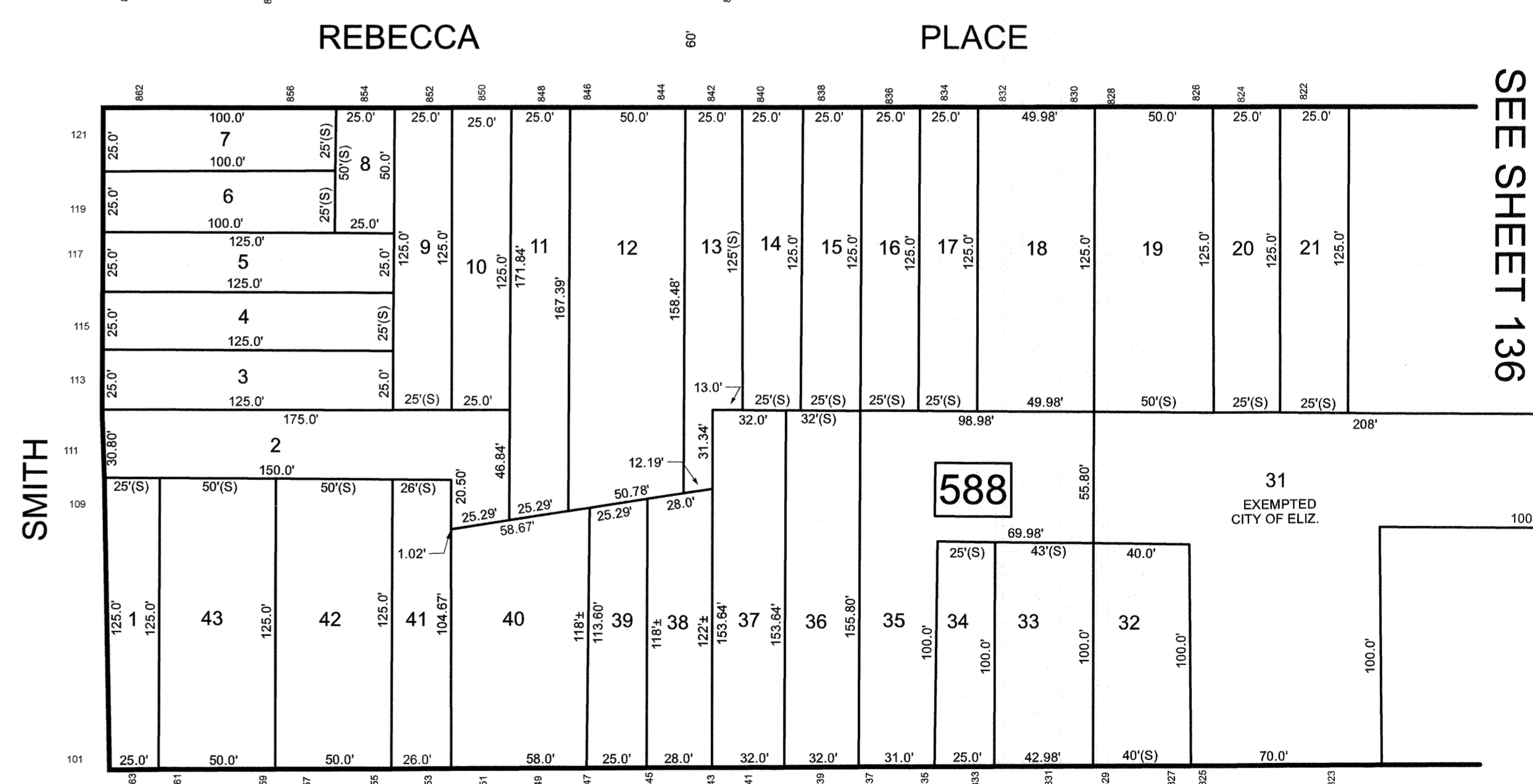


WIDTH VARIES

SEE SHEET 123



SEE SHEET 136



NEW JERSEY DEPARTMENT OF THE TREASURY
 DIVISION OF TAXATION
 APPROVED AS A TAX MAP PURSUANT TO THE AUTHORITY OF
 N.J.S.A. 54:1-15 AND N.J.S.A. 54:30-1
 FOR THE DIRECTOR, DIVISION OF TAXATION

DATE MAR 31 20?? SERIAL NO. 1129

THIS MAP HAS BEEN DRAWN USING COMPUTER AIDED DRAFTING/DESIGN (CAD/D)

TAX MAP
CITY OF ELIZABETH
 UNION COUNTY NEW JERSEY
 SCALE: 1" = 50' FEB. 15, 2019
GLEN J. LLOYD
 N.J. PROFESSIONAL LAND SURVEYOR LIC. #GS037598
 MASER CONSULTING PA
 331 NEWMAN SPRINGS ROAD, SUITE 203
 RED BANK, NJ 07701