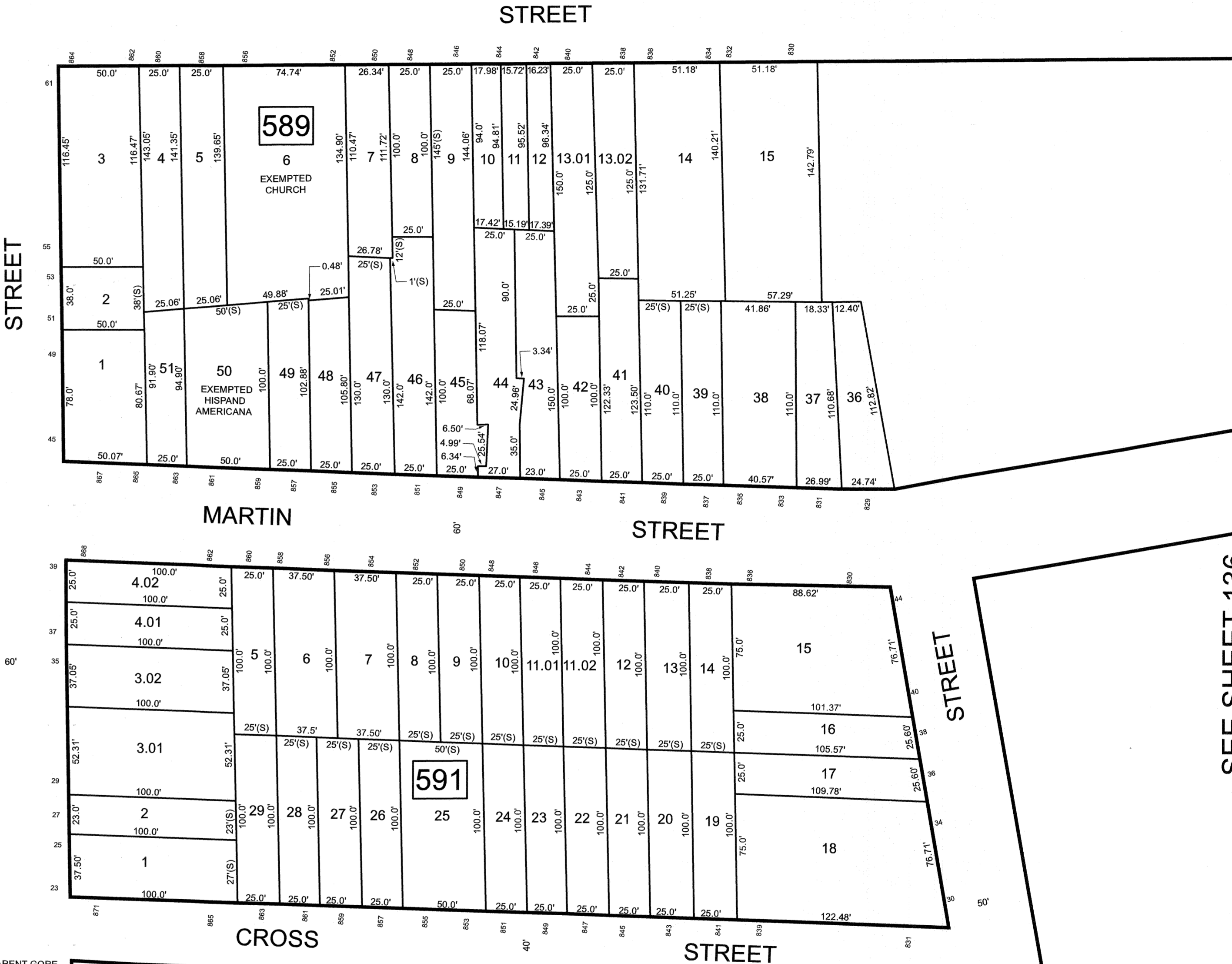
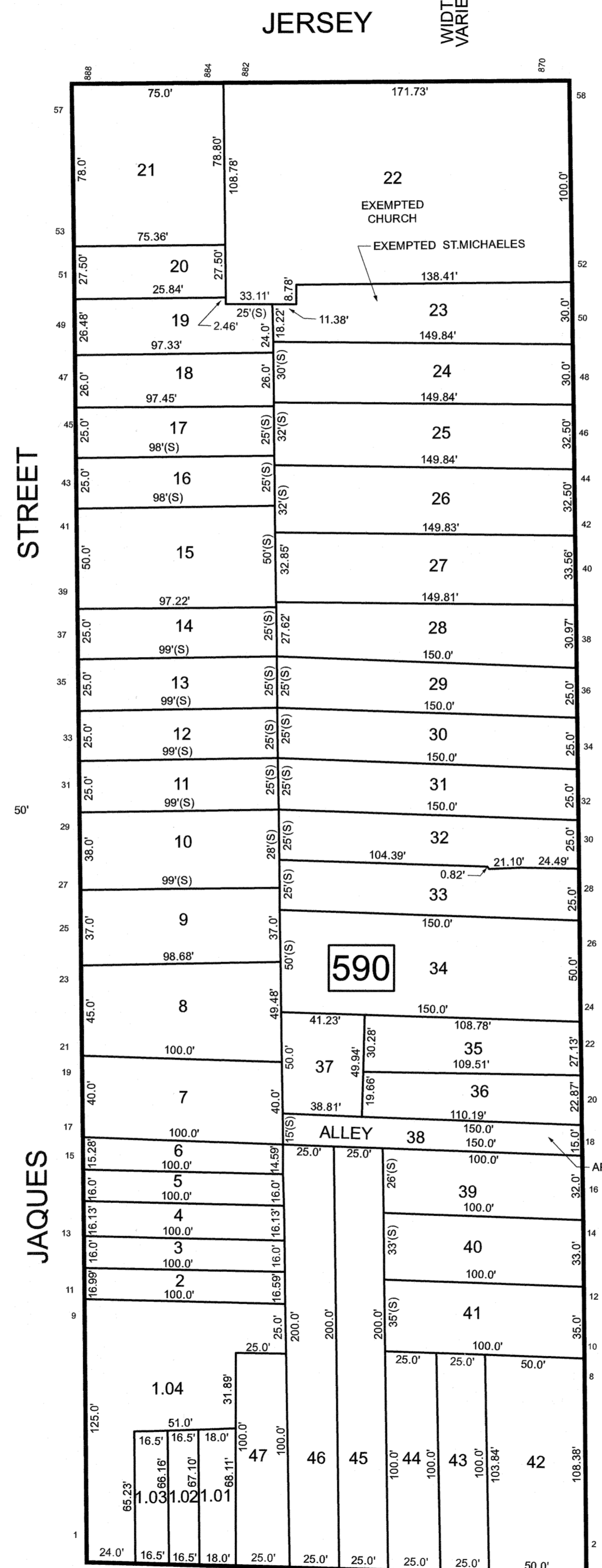
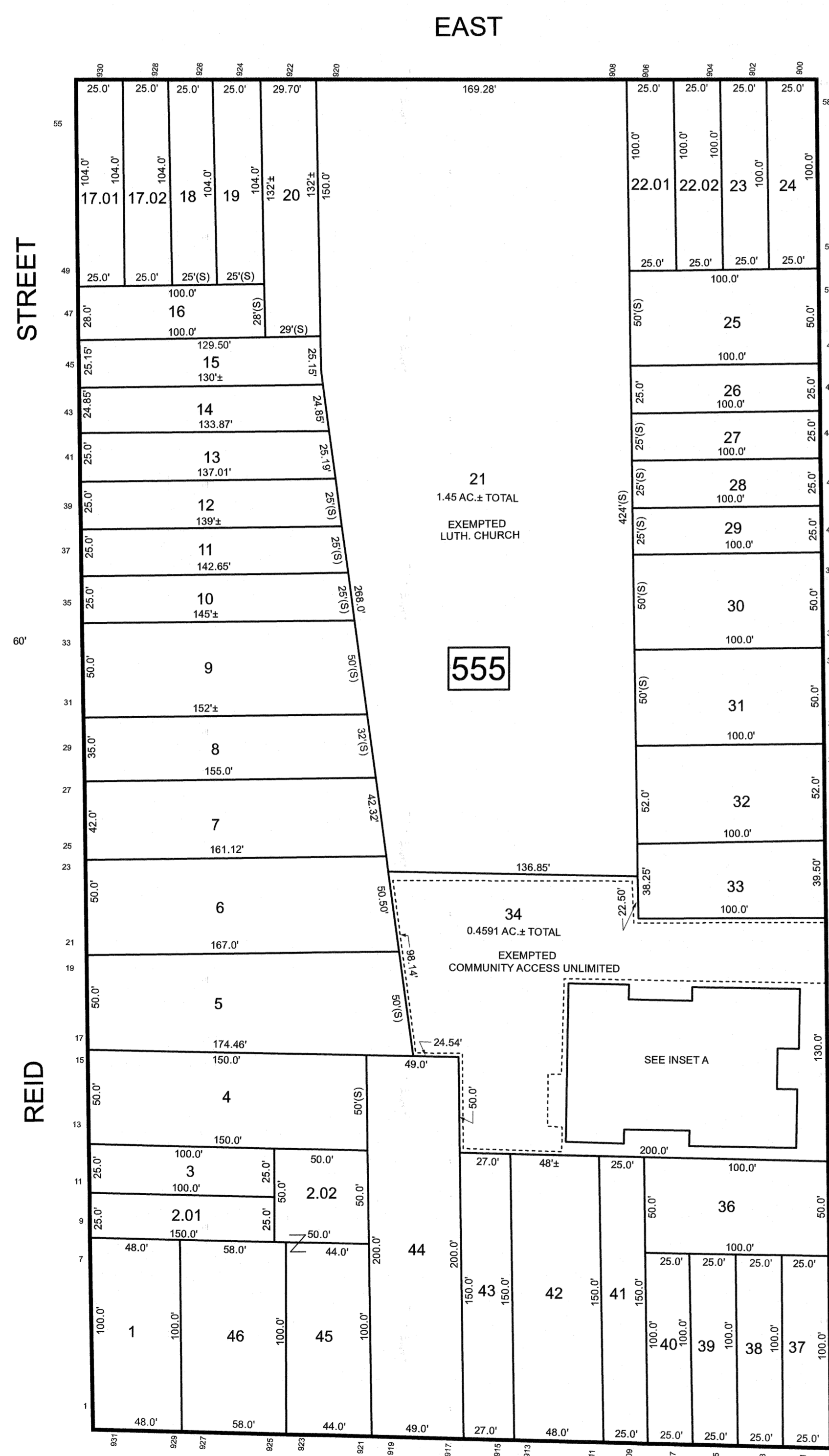
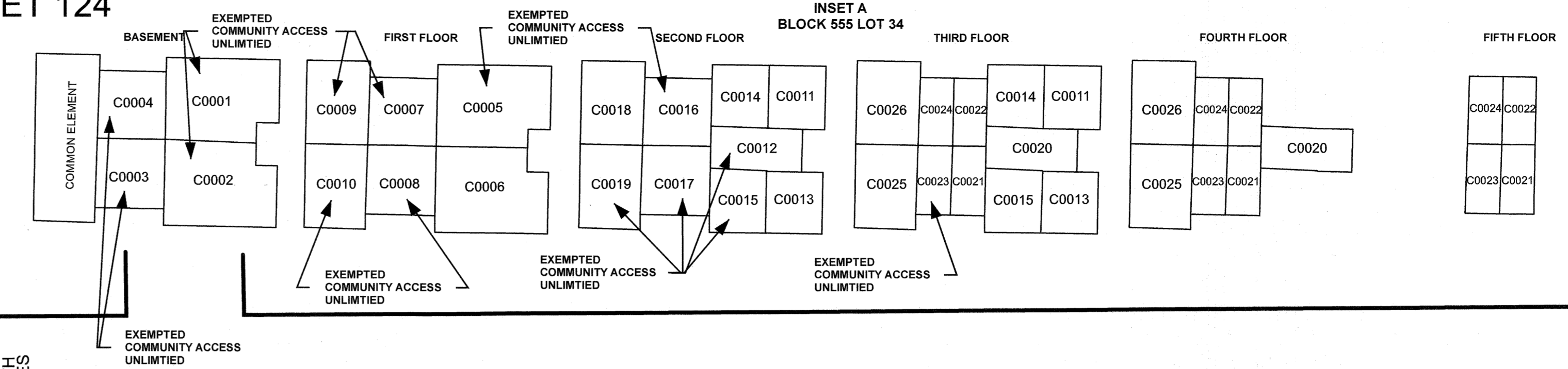


REVISIONS		
DATE	NAME	LIC. NO.

SEE SHEET 124



BLOCK	LOT	QUAL	SQ. FT.	FLOOR	UNIT NO.
555	34	C0001	748	0	1
555	34	C0002	913	0	2
555	34	C0003	816	0	3
555	34	C0004	760	0	4
555	34	C0005	961	1	5
555	34	C0006	1,197	1	6
555	34	C0007	874	1	7
555	34	C0008	866	1	8
555	34	C0009	967	1	9
555	34	C0010	705	1	10
555	34	C0011	822	2/3	11
555	34	C0012	635	2	12
555	34	C0013	822	2/3	13

BLOCK	LOT	QUAL	SQ. FT.	FLOOR	UNIT NO.
555	34	C0014	1,000	2/3	14
555	34	C0015	907	2/3	15
555	34	C0016	877	2	16
555	34	C0017	972	2	17
555	34	C0018	959	2	18
555	34	C0019	726	2	19
555	34	C0020	1,075	3/4	20
555	34	C0021	1,246	3/4	21
555	34	C0022	1,271	3/4	22
555	34	C0023	1,223	3/4	23
555	34	C0024	1,153	3/4	24
555	34	C0025	1,427	3/4	25
555	34	C0026	1,324	3/4	26

THIS MAP HAS BEEN DRAWN USING COMPUTER AIDED DRAFTING/DESIGN (CADD)

NEW JERSEY DEPARTMENT OF THE TREASURY  
 DIVISION OF TAXATION  
 APPROVED AS A TAX MAP PURSUANT TO THE AUTHORITY OF  
 N.J.S.A. 54:1-16 AND N.J.S.A. 54:1-1  
 FOR THE DIRECTOR, DIVISION OF TAXATION



DATE MAR 31 2022 SERIAL NO. 1129

**TAX MAP**  
**CITY OF ELIZABETH**  
 UNION COUNTY NEW JERSEY  
 SCALE: 1" = 50' FEB. 15, 2019  
**GLEN J. LLOYD**  
 N.J. PROFESSIONAL LAND SURVEYOR LIC. #GS037598  
 MASER CONSULTING PA  
 331 NEWMAN SPRINGS ROAD, SUITE 203  
 RED BANK, NJ 07701

SEE SHEET 95

SEE SHEET 136

EAST  
 SECOND AVE.  
 SEE SHEET 112

JERSEY  
 AVENUE  
 SOUTH STREET  
 CENTRE ST. SEE SHEET 122