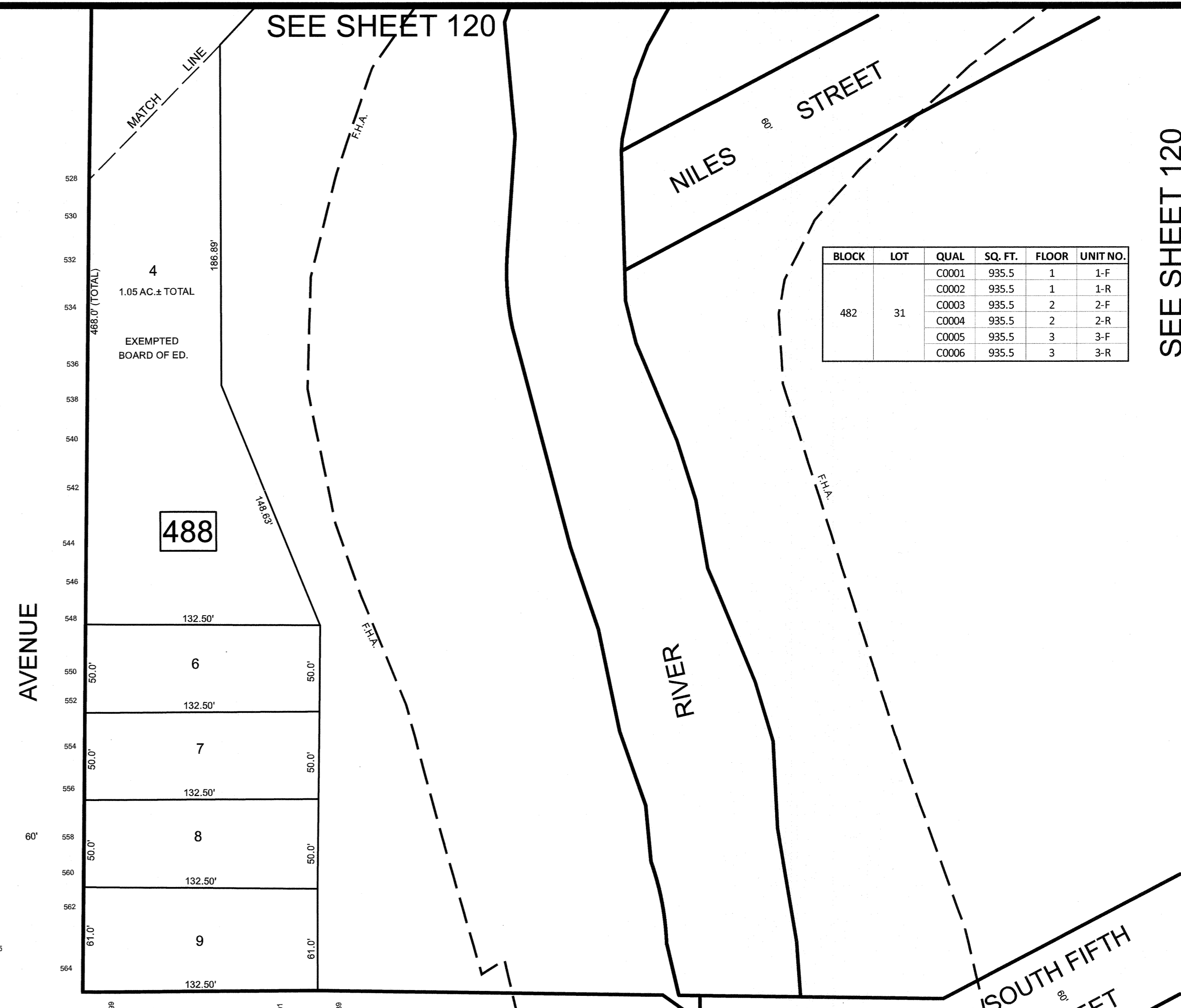
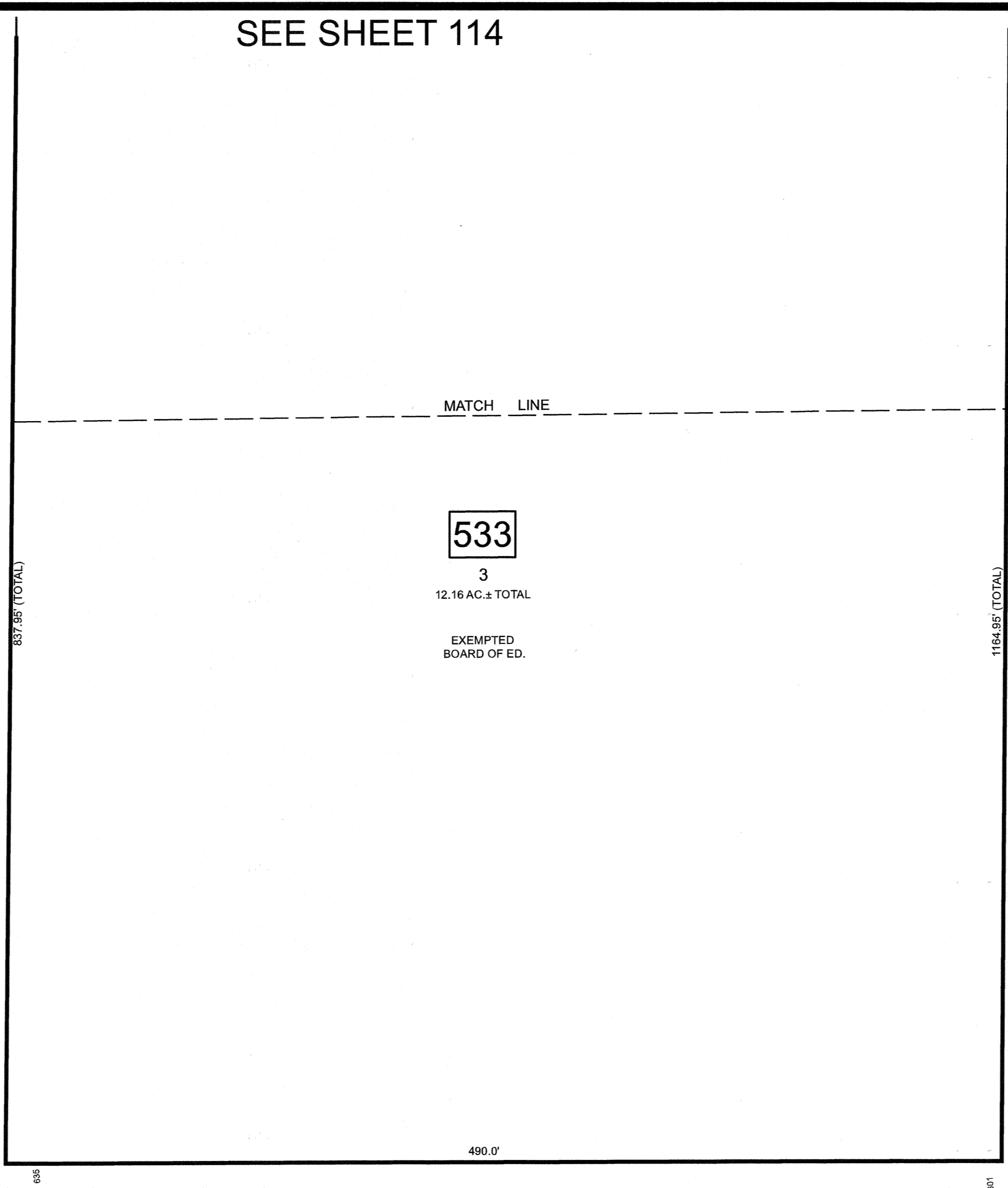
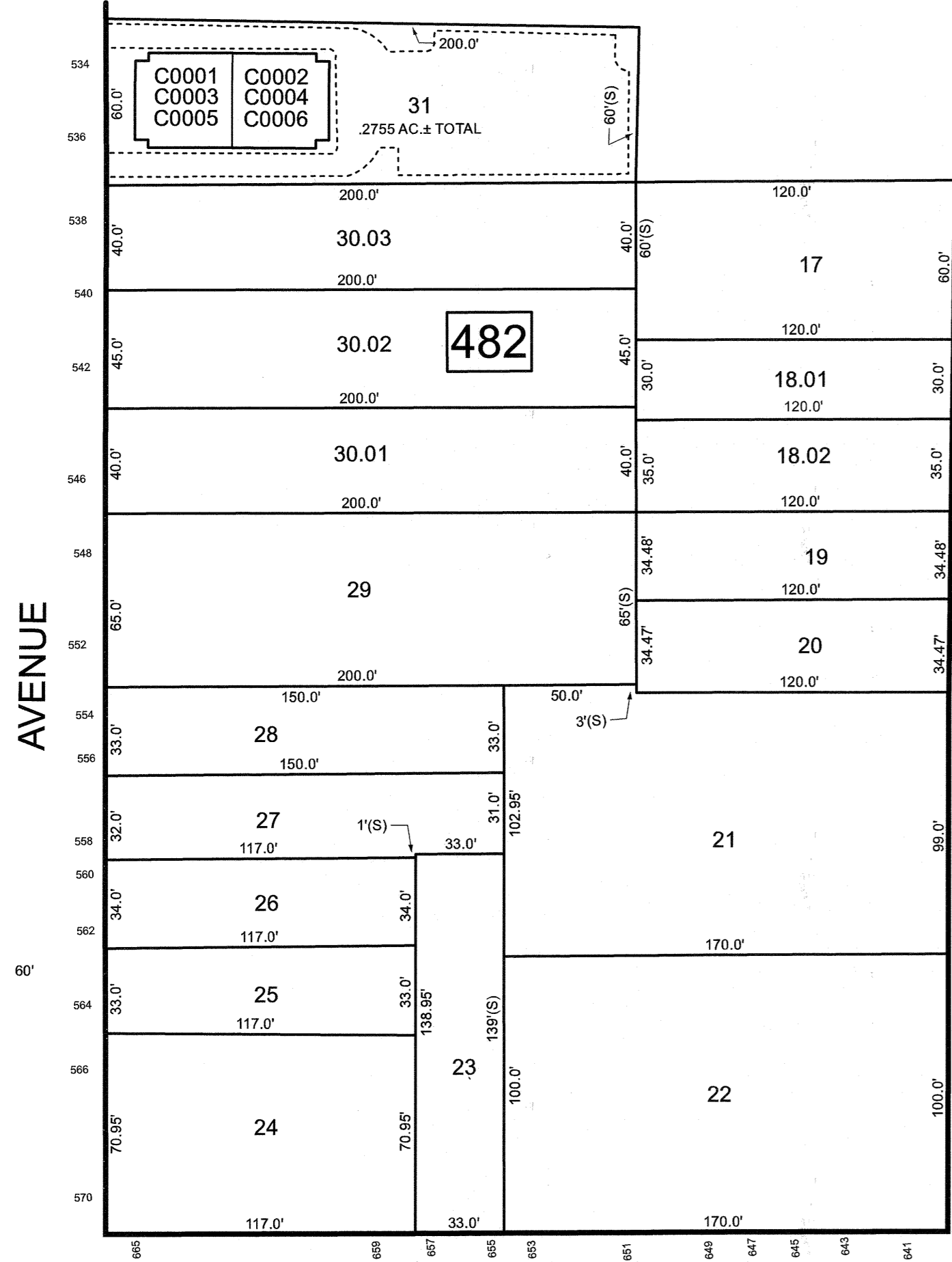


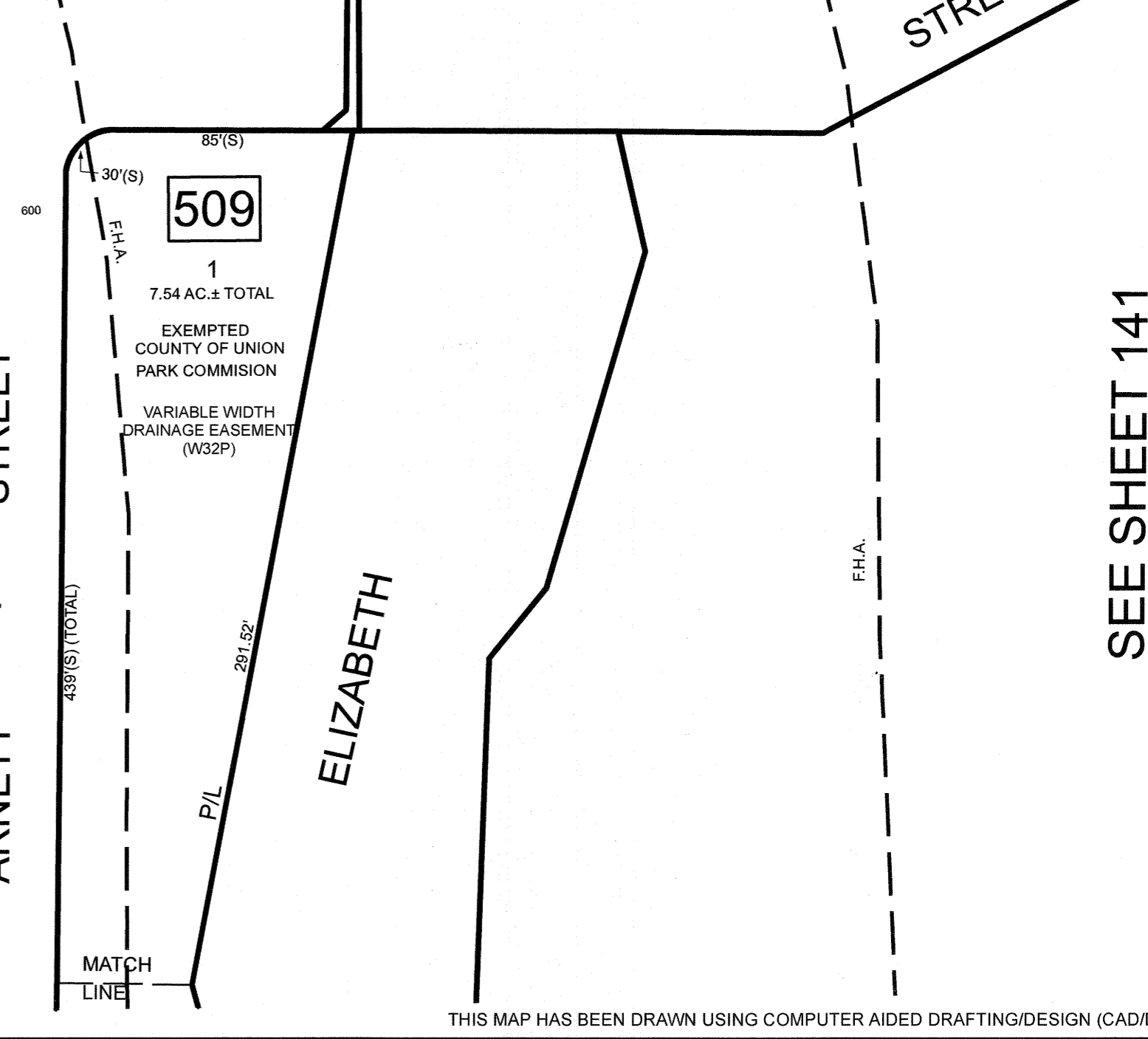
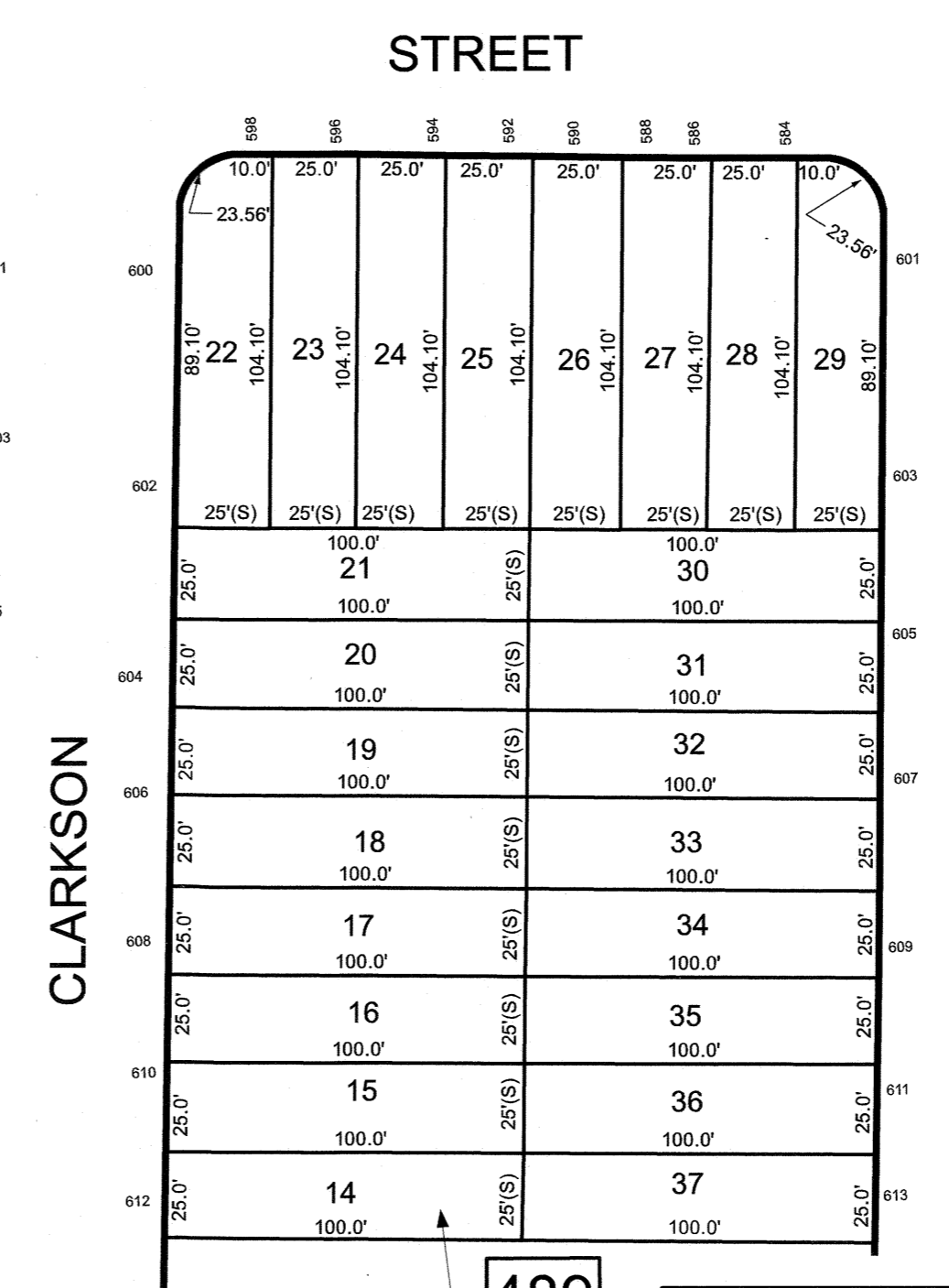
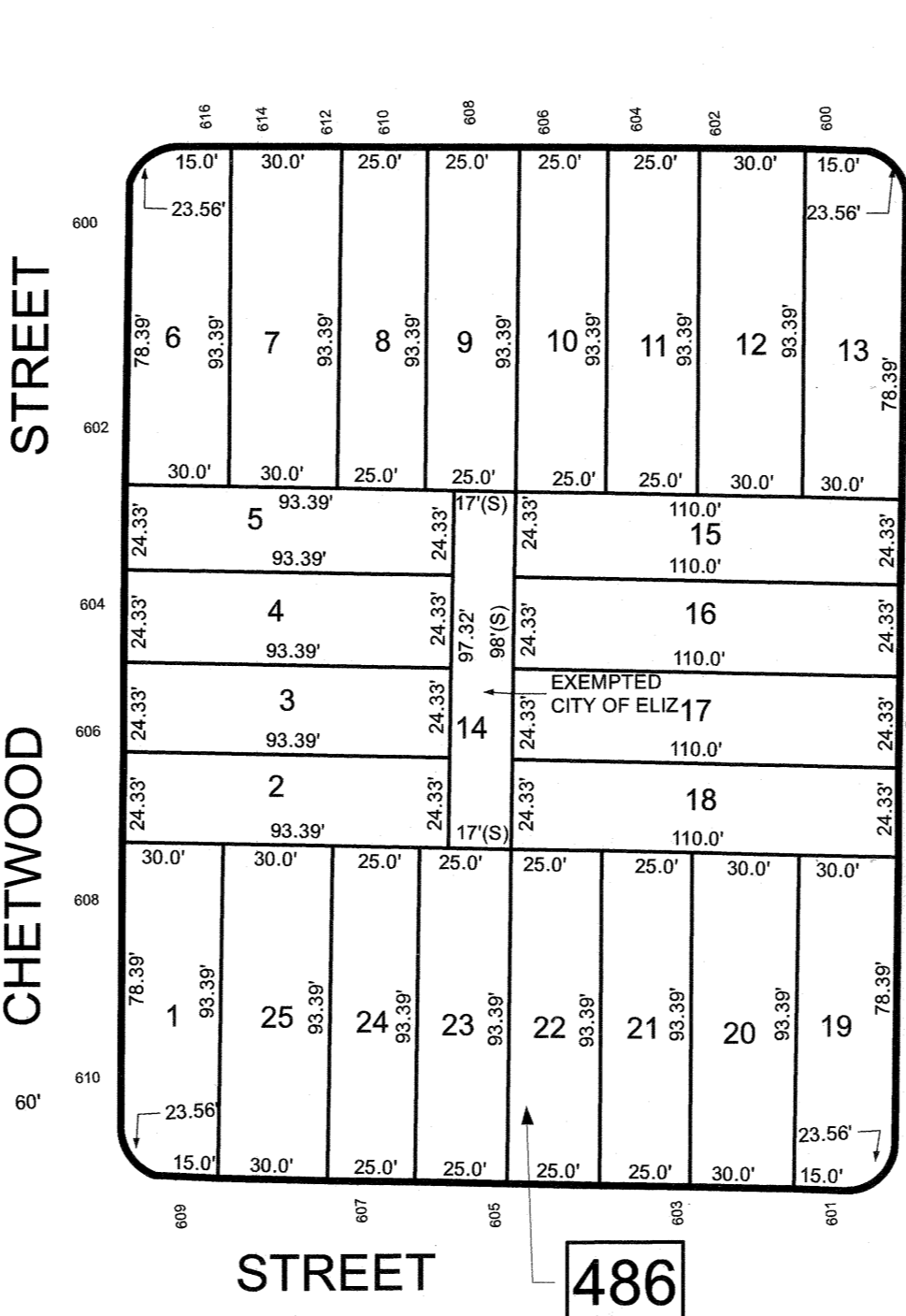
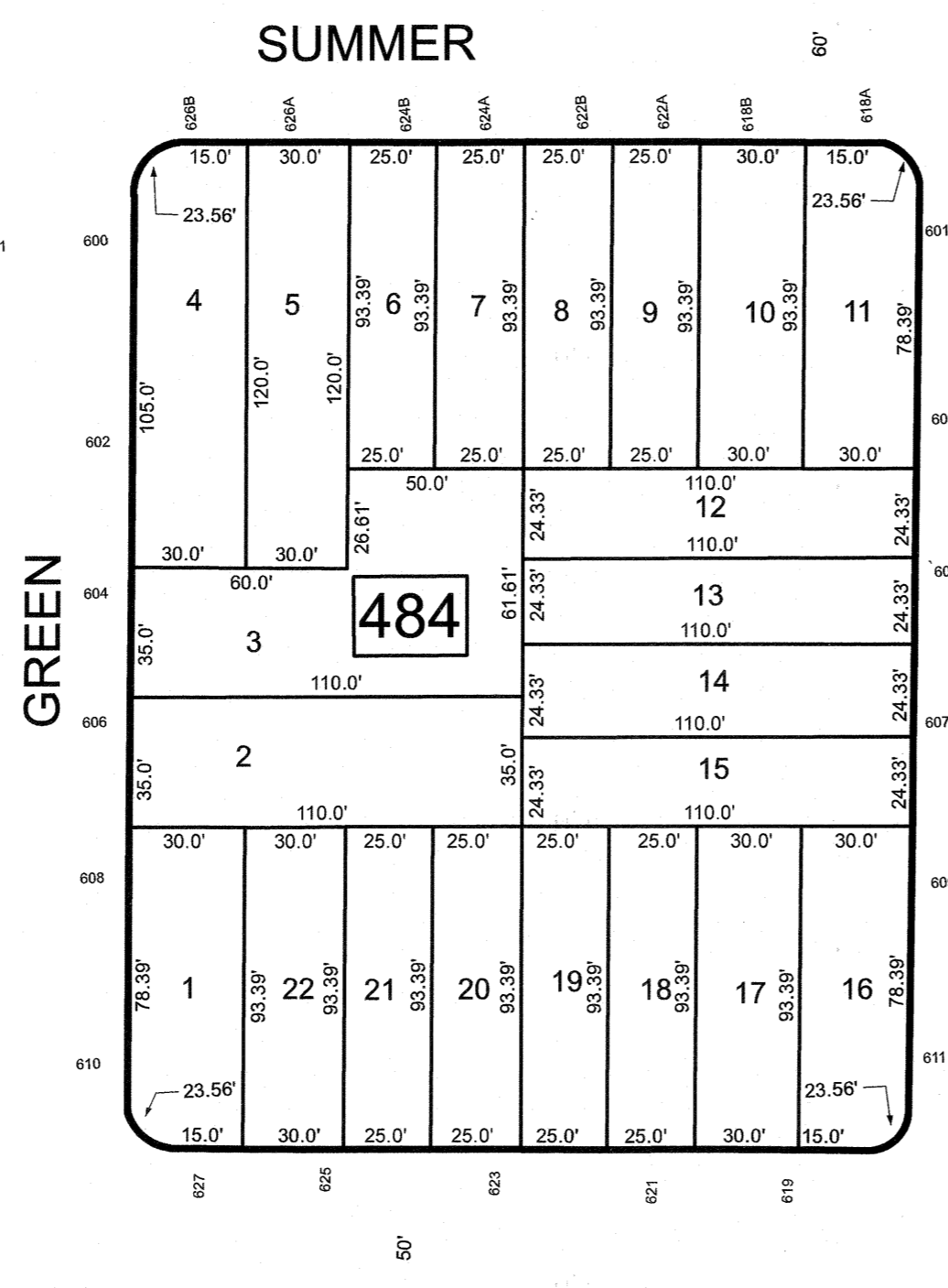
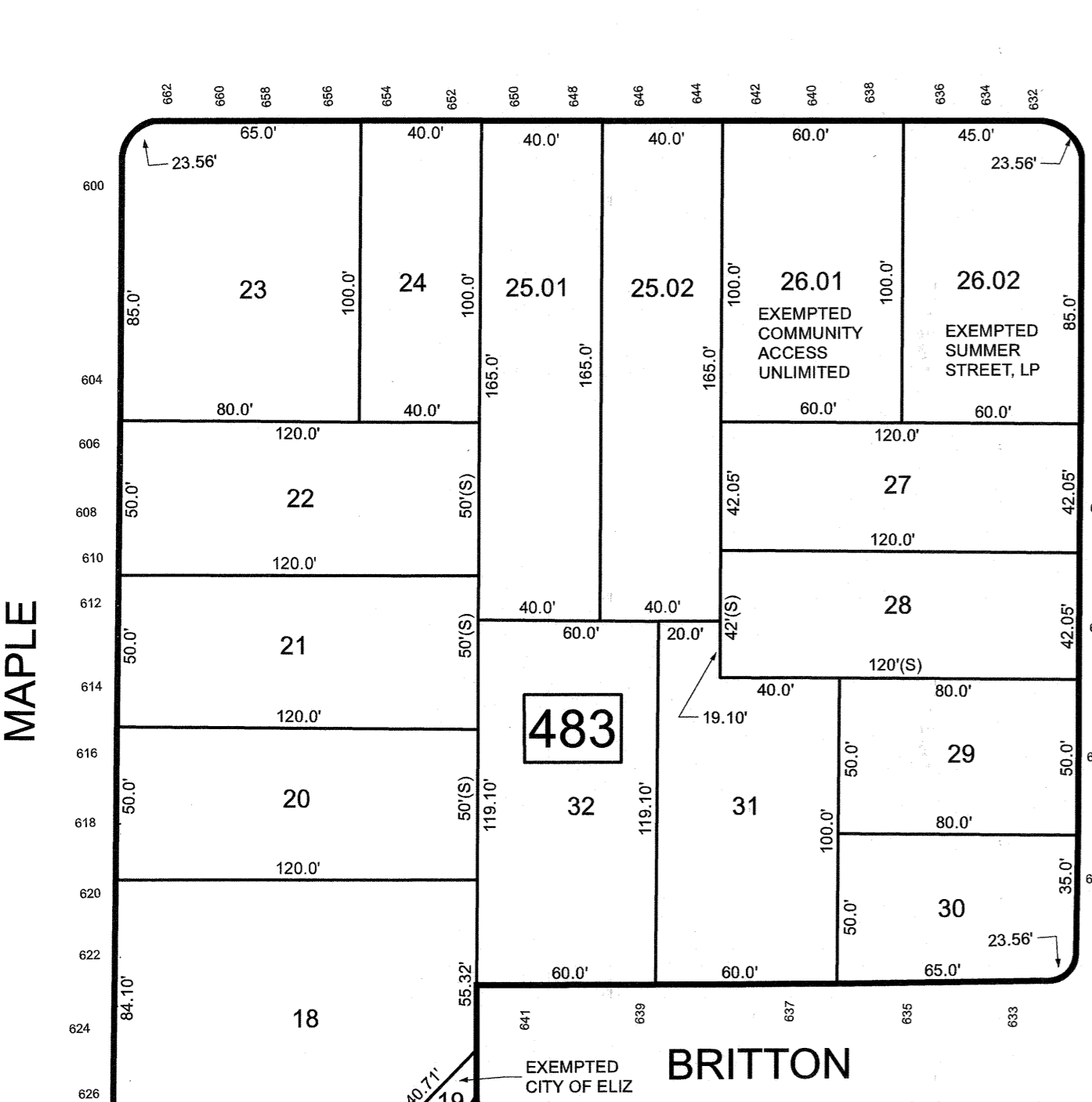
REVISIONS		
DATE	NAME	LIC. NO.



BLOCK	LOT	QUAL	SQ. FT.	FLOOR	UNIT NO.
482	31	C0001	935.5	1	1-F
		C0002	935.5	1	1-R
		C0003	935.5	2	2-F
		C0004	935.5	2	2-R
		C0005	935.5	3	3-F
		C0006	935.5	3	3-R

SEE SHEET 115


SEE SHEET 120



SEE SHEET 118

SEE SHEET 141

NEW JERSEY DEPARTMENT OF THE TREASURY
 DIVISION OF TAXATION
 APPROVED AS A TAX MAP PURSUANT TO THE AUTHORITY OF
 N.J.S.A. 54:1-15 AND N.J.S.A. 54:20-1
 FOR THE DIRECTOR, DIVISION OF TAXATION



DATE MAR 31 2022 SERIAL NO. 1129

TAX MAP
CITY OF ELIZABETH
 UNION COUNTY NEW JERSEY
 SCALE: 1" = 50' FEB. 15, 2019
GLEN J. LLOYD
 N.J. PROFESSIONAL LAND SURVEYOR LIC. #GS037598
 MASER CONSULTING PA
 331 NEWMAN SPRINGS ROAD, SUITE 203
 RED BANK, NJ 07701

THIS MAP HAS BEEN DRAWN USING COMPUTER AIDED DRAFTING/DESIGN (CAD/D)