

SEE SHEET 99

REVISIONS		
DATE	NAME	LIC. NO.

SEE SHEET 109

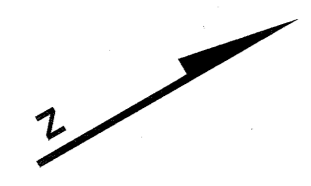
SPRING

STREET

& US 9

ROUTE

US 1



WIDTH VARIES

STREET

WIDTH VARIES

JULIA

SEE SHEET 127

SEE SHEET 127

SEE SHEET 129

567

1.01  
7.805 AC.± TOTAL

VACATED ORD. 4473  
VB18 PG6

HENRY STREET

MATCH

LINE

FAIRMOUNT

AVENUE

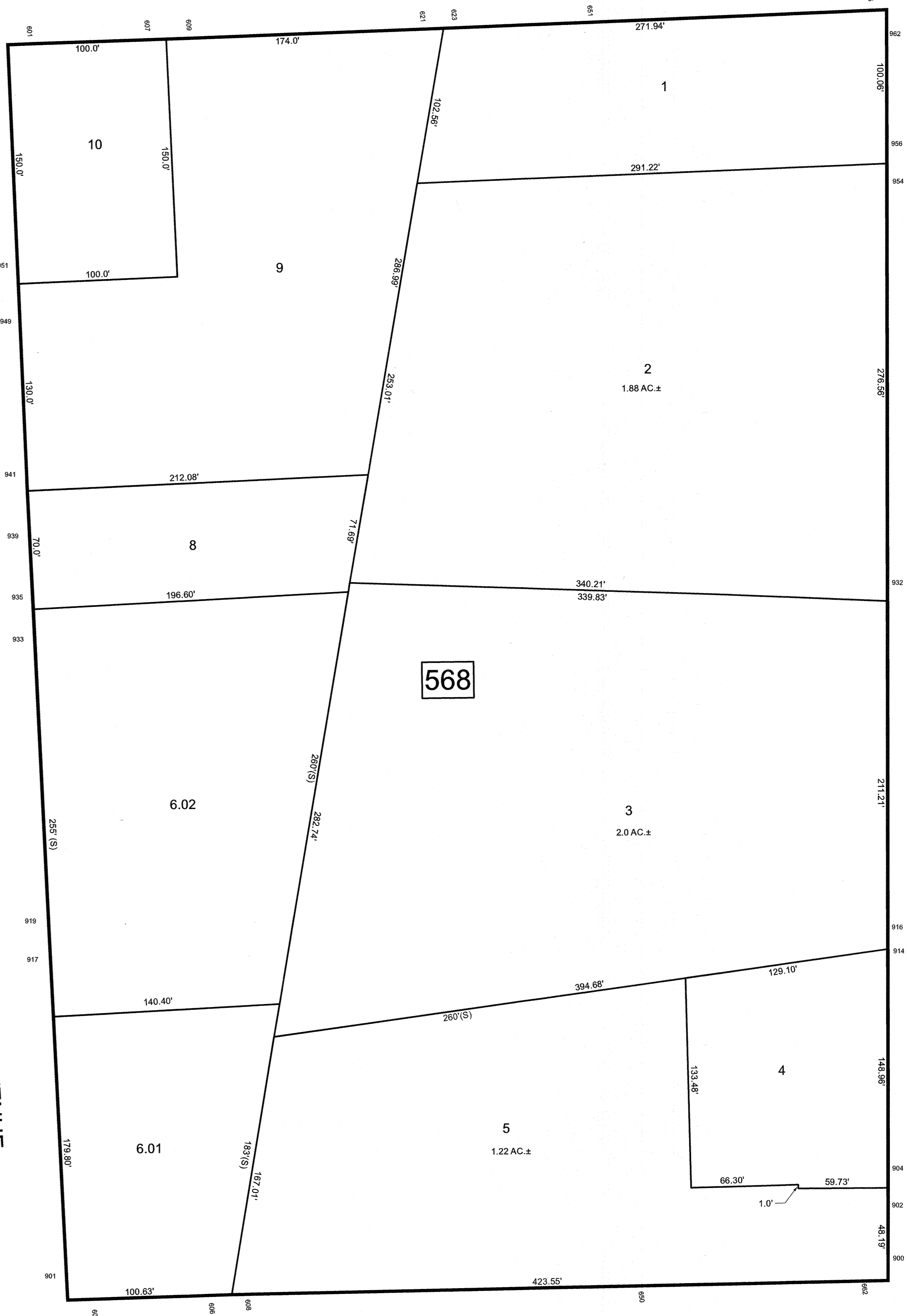
HENRY

STREET

WOODRUFF

SEE SHEET 107

LANE



568

THIS MAP HAS BEEN DRAWN USING COMPUTER AIDED DRAFTING/DESIGN (CAD/D)

NEW JERSEY DEPARTMENT OF THE TREASURY  
 DIVISION OF TAXATION  
 APPROVED AS A TAX MAP PURSUANT TO THE AUTHORITY OF  
 N.J.S.A. 54:5-15 AND N.J.S.A. 54:5D-1  
 FOR THE DIRECTOR, DIVISION OF TAXATION



DATE MAR 31 2022 SERIAL NO. 1129

**TAX MAP**  
**CITY OF ELIZABETH**  
 UNION COUNTY NEW JERSEY  
 SCALE: 1" = 50' FEB. 15, 2019  
**GLEN J. LLOYD**

N.J. PROFESSIONAL LAND SURVEYOR LIC. #GS037598  
 MASER CONSULTING PA  
 331 NEWMAN SPRINGS ROAD, SUITE 203  
 RED BANK, NJ 07701