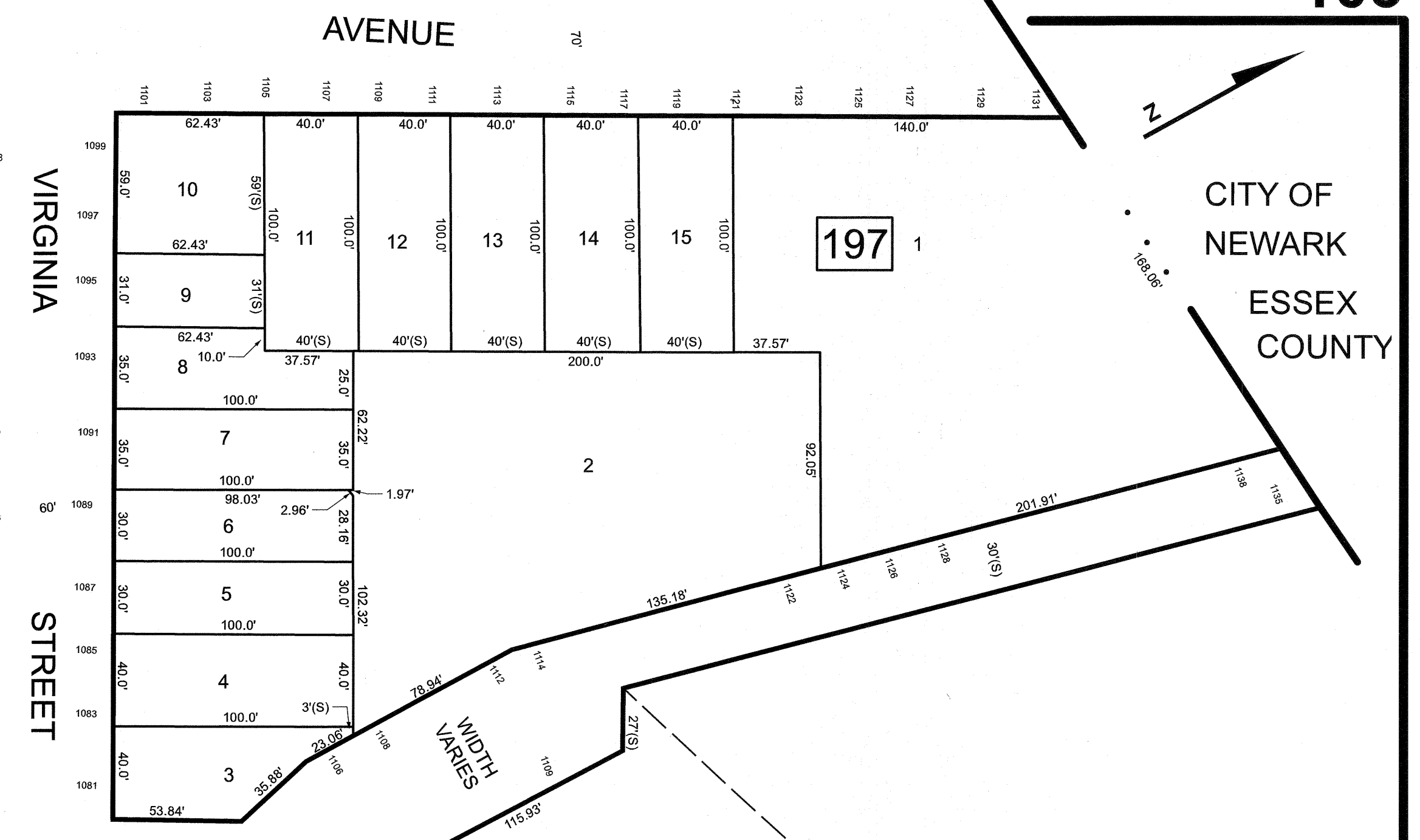
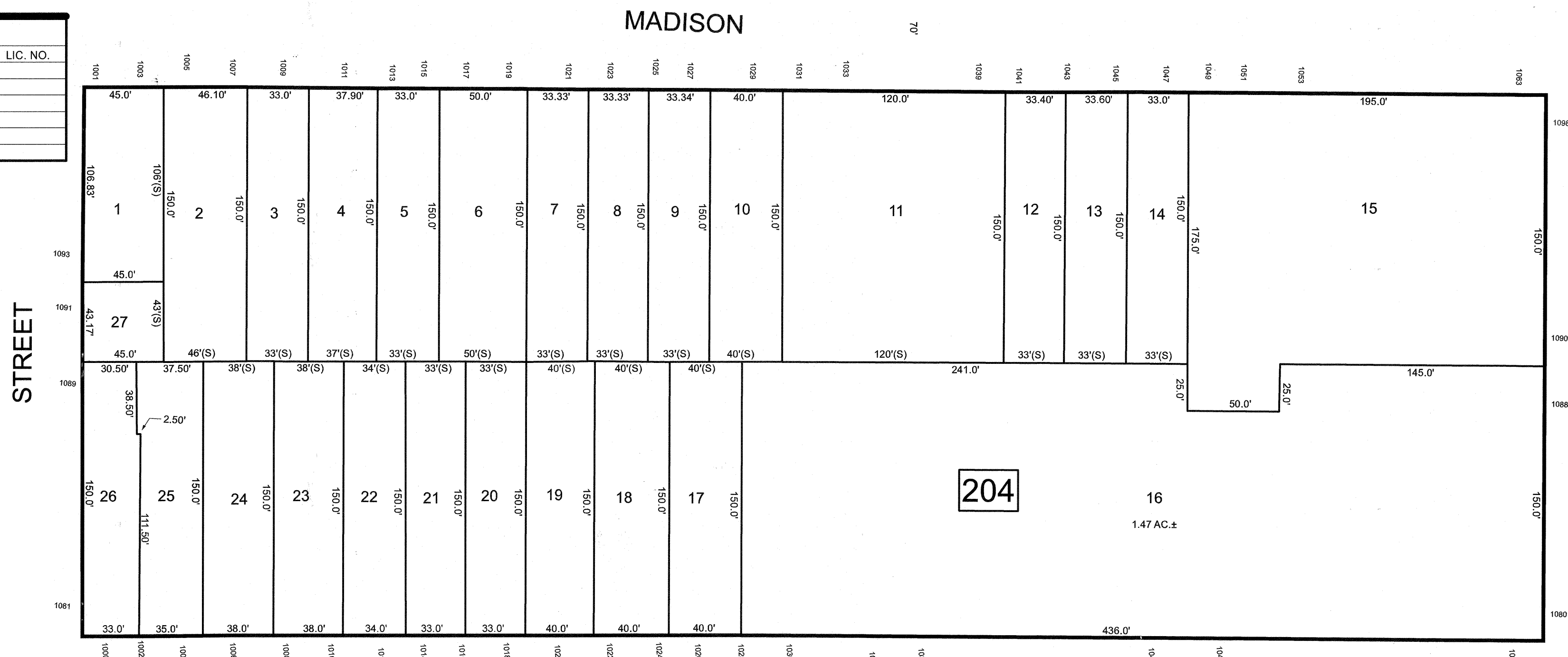


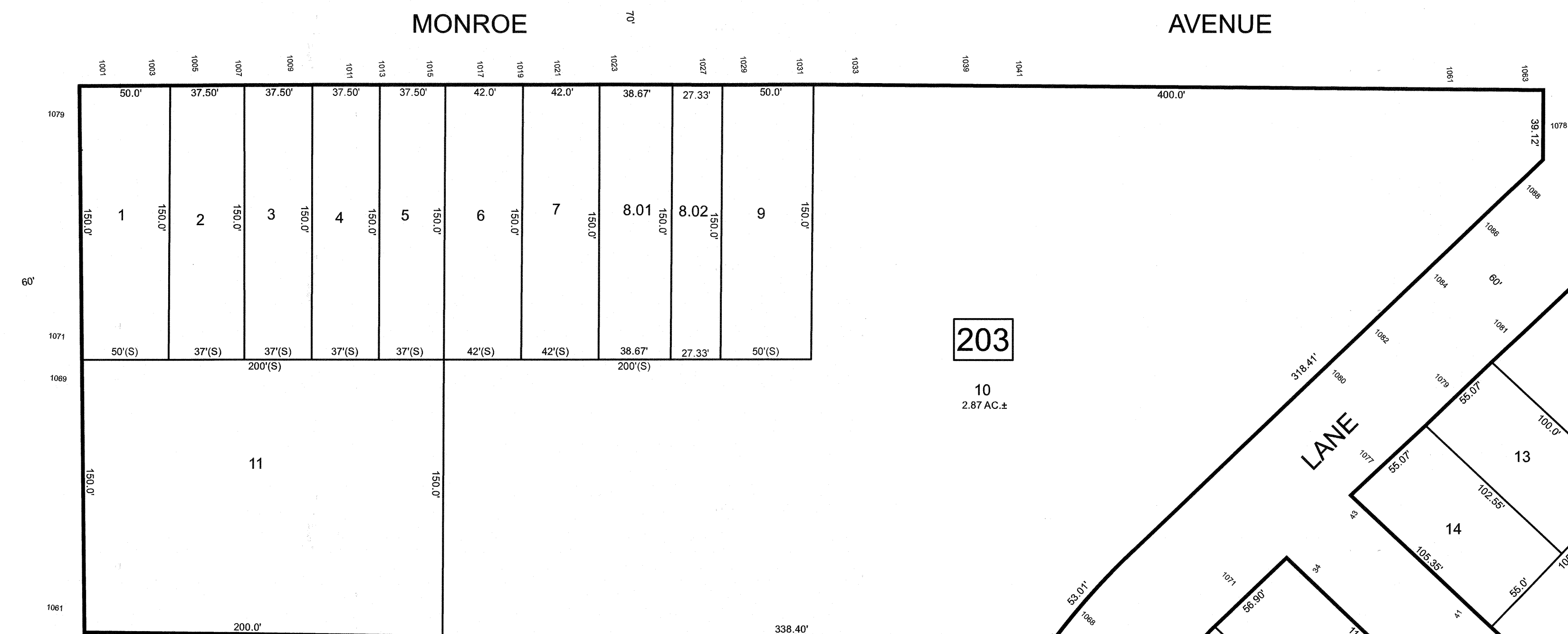
REVISIONS		
DATE	NAME	LIC. NO.

SEE SHEET 70



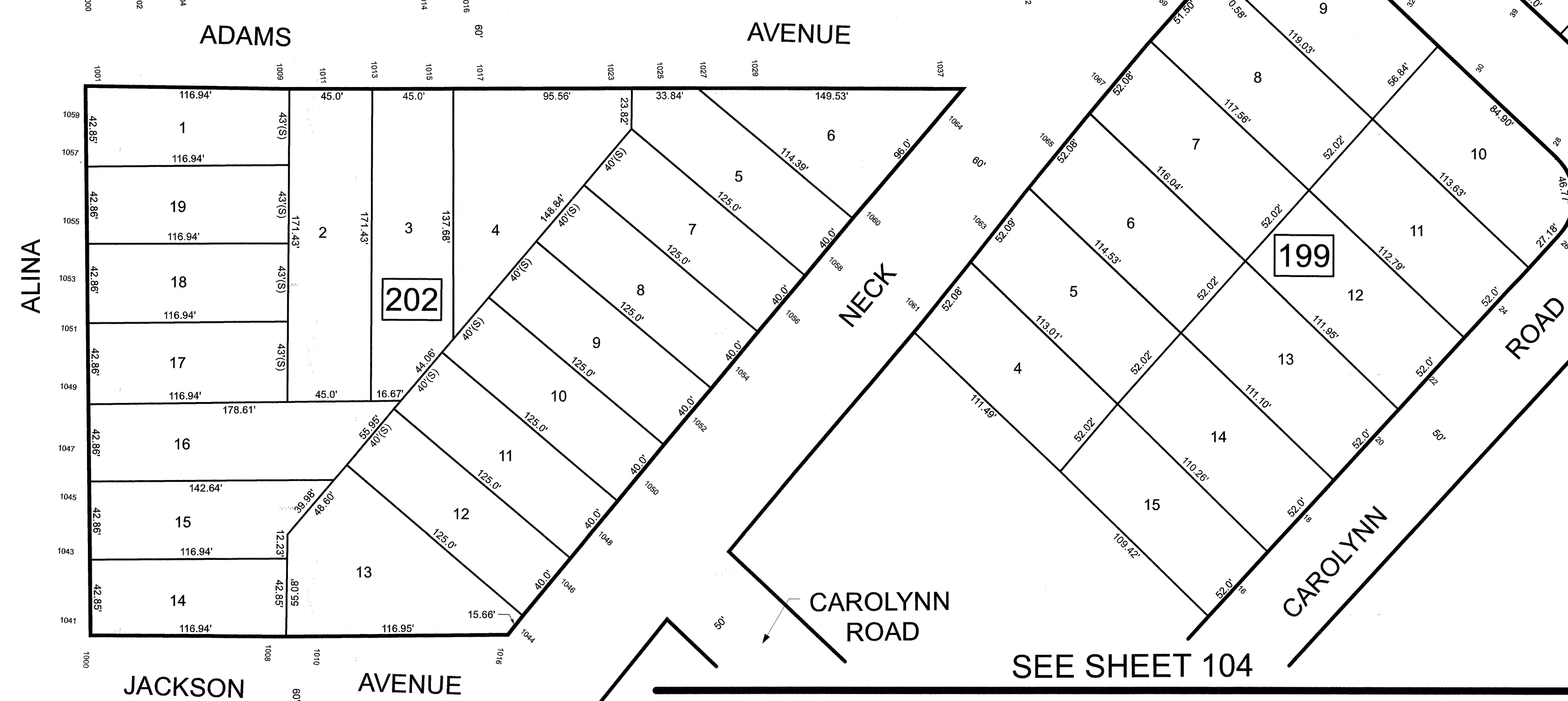
CITY OF NEWARK
ESSEX COUNTY

SEE SHEET 102



SEE SHEET 105

SEE SHEET 102



SEE SHEET 104

THIS MAP HAS BEEN DRAWN USING COMPUTER AIDED DRAFTING/DESIGN (CAD/D)

NEW JERSEY DEPARTMENT OF THE TREASURY
DIVISION OF TAXATION
APPROVED AS A TAX MAP PURSUANT TO THE AUTHORITY OF
N.J.S.A. 54:1-16 AND N.J.S.A. 54:50-1
FOR THE DIRECTOR, DIVISION OF TAXATION



DATE MAR 3 1 2022 SERIAL NO. 1129

TAX MAP
CITY OF ELIZABETH
UNION COUNTY NEW JERSEY
SCALE: 1" = 50' FEB. 15, 2019
GLEN J. LLOYD
N.J. PROFESSIONAL LAND SURVEYOR LIC. #GS037598
MASER CONSULTING PA
331 NEWMAN SPRINGS ROAD, SUITE 203
RED BANK, NJ 07701