

| REVISIONS | | |
|-----------|------|----------|
| DATE | NAME | LIC. NO. |
| | | |
| | | |
| | | |
| | | |

| BLOCK | LOT | QUAL | SQ. FT. | FLOOR | UNIT NO. |
|-------|-----|-------|---------|-------|----------|
| 451 | 10 | C0001 | 1,115 | 2 | 200 |
| 451 | 10 | C0002 | 1,115 | 2 | 201 |
| 451 | 10 | C0003 | 1,090 | 2 | 202 |
| 451 | 10 | C0004 | 995 | 2 | 203 |
| 451 | 10 | C0005 | 1,090 | 2 | 204 |
| 451 | 10 | C0006 | 995 | 2 | 205 |
| 451 | 10 | C0007 | 1,010 | 2 | 206 |
| 451 | 10 | C0008 | 975 | 2 | 207 |
| 451 | 10 | C0009 | 1,115 | 3 | 300 |
| 451 | 10 | C0010 | 1,115 | 3 | 301 |
| 451 | 10 | C0011 | 1,090 | 3 | 302 |
| 451 | 10 | C0012 | 995 | 3 | 303 |

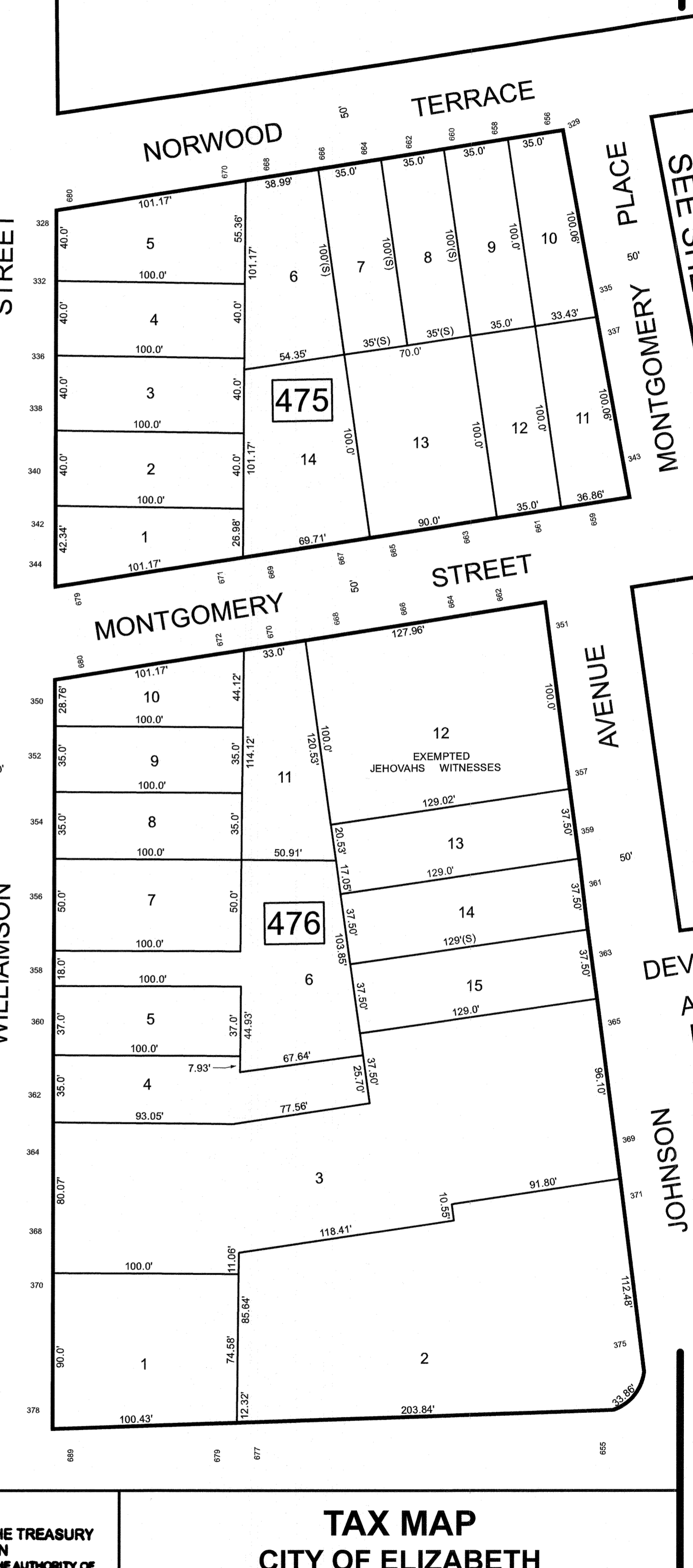
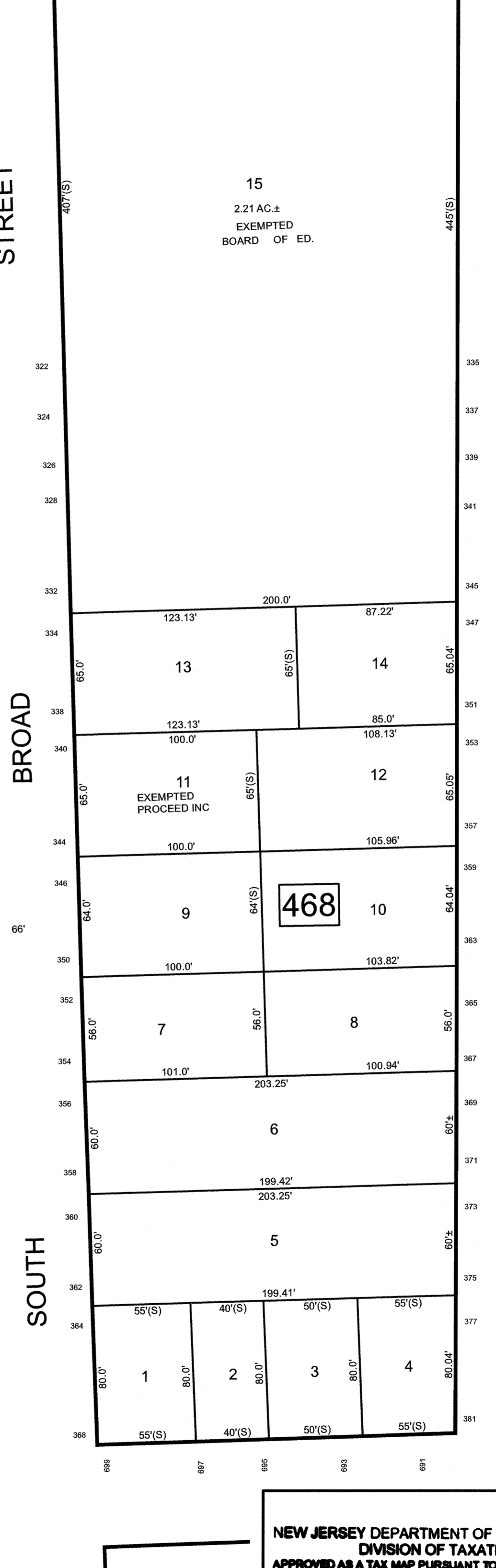
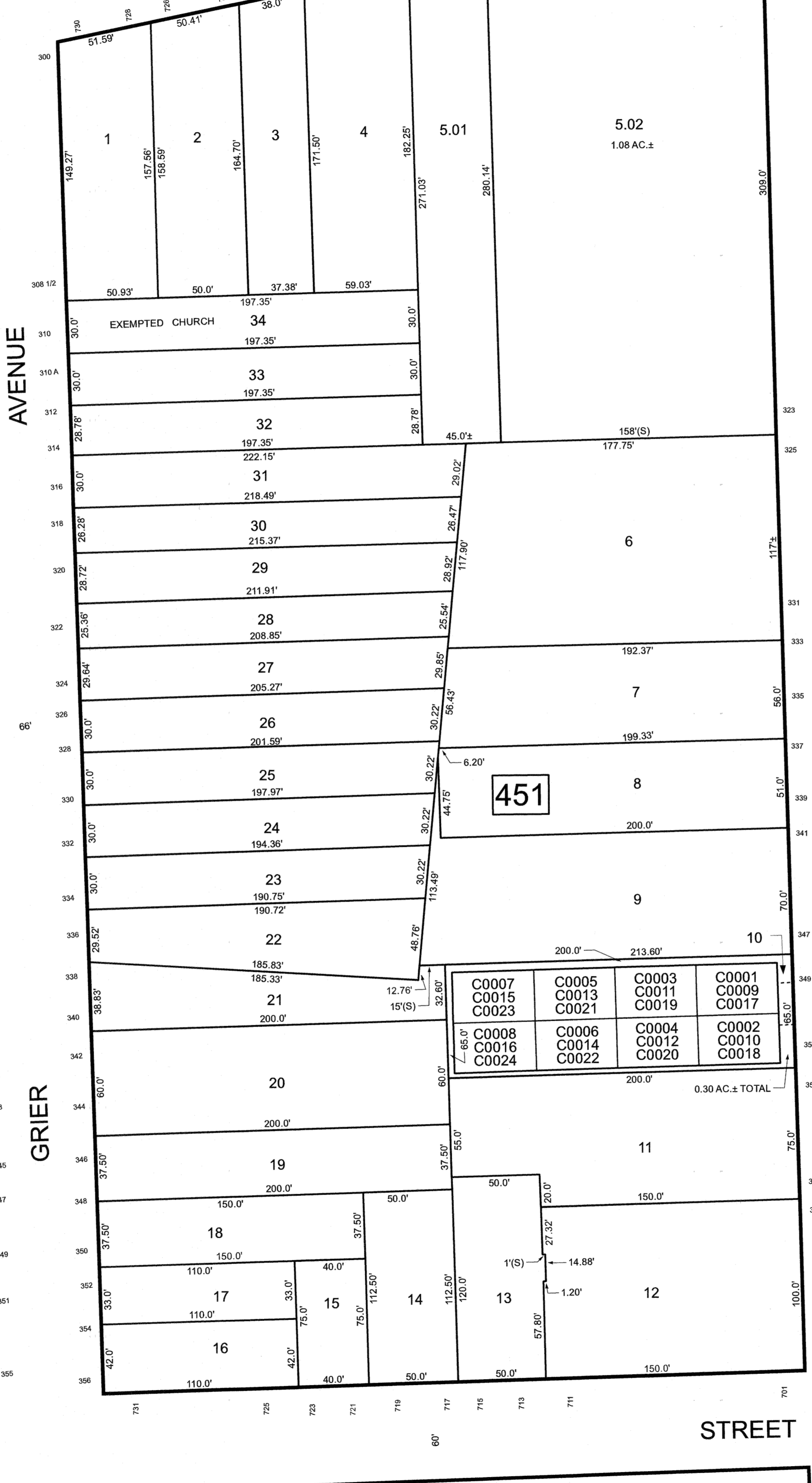
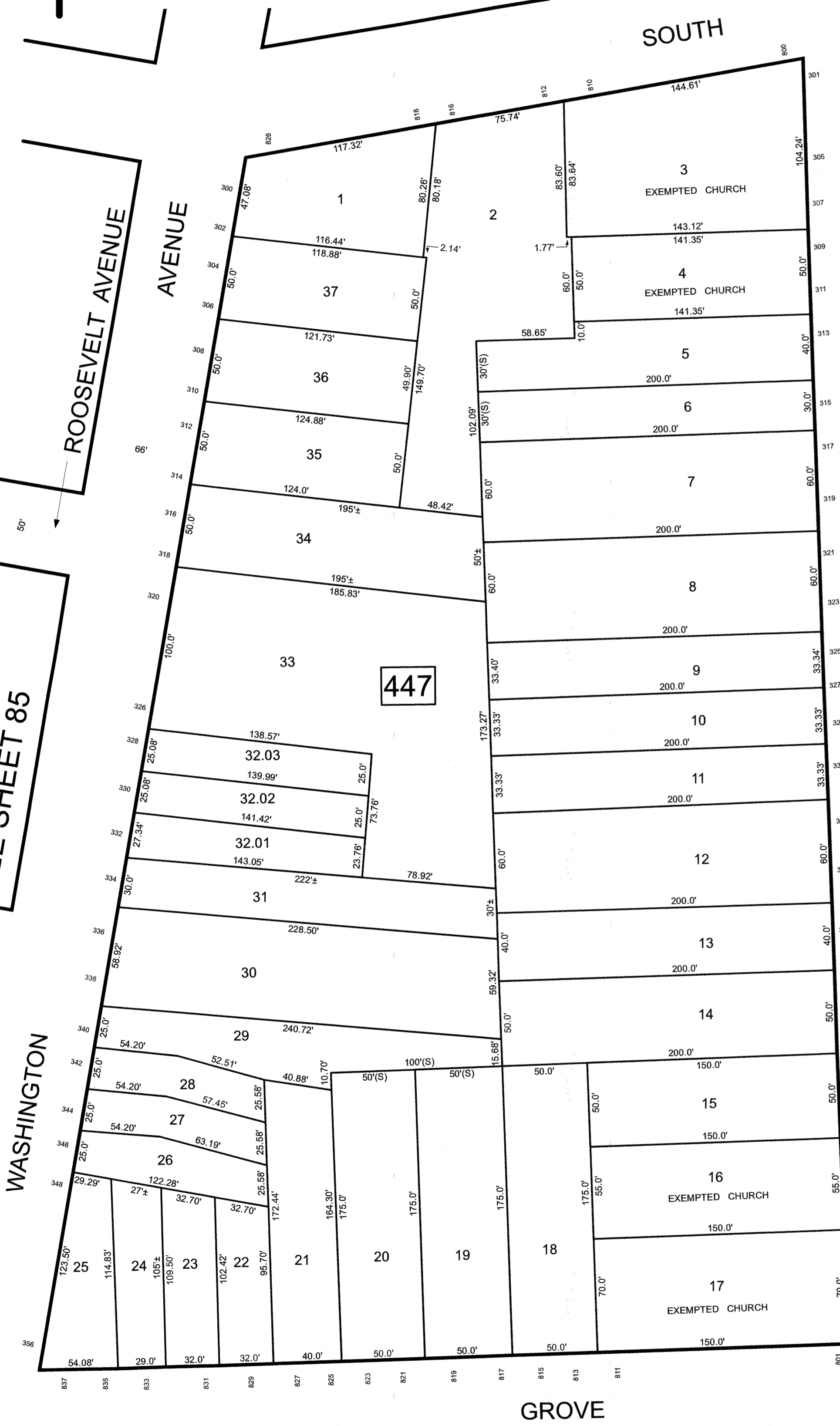
| BLOCK | LOT | QUAL | SQ. FT. | FLOOR | UNIT NO. |
|-------|-----|-------|---------|-------|----------|
| 451 | 10 | C0013 | 1,090 | 3 | 304 |
| 451 | 10 | C0014 | 995 | 3 | 305 |
| 451 | 10 | C0015 | 1,010 | 3 | 306 |
| 451 | 10 | C0016 | 975 | 3 | 307 |
| 451 | 10 | C0017 | 1,115 | 4 | 400 |
| 451 | 10 | C0018 | 1,115 | 4 | 401 |
| 451 | 10 | C0019 | 1,090 | 4 | 402 |
| 451 | 10 | C0020 | 995 | 4 | 403 |
| 451 | 10 | C0021 | 1,090 | 4 | 404 |
| 451 | 10 | C0022 | 995 | 4 | 405 |
| 451 | 10 | C0023 | 1,010 | 4 | 406 |
| 451 | 10 | C0024 | 975 | 4 | 407 |

SEE SHEET 84

LIBERTY STREET

49 1/2

STREET



| | | | |
|-------|-------|-------|-------|
| C0007 | C0005 | C0003 | C0001 |
| C0015 | C0013 | C0011 | C0009 |
| C0023 | C0021 | C0019 | C0017 |
| C0008 | C0006 | C0004 | C0002 |
| C0016 | C0014 | C0012 | C0010 |
| C0024 | C0022 | C0020 | C0018 |

0.30 AC. ± TOTAL

NEW JERSEY DEPARTMENT OF THE TREASURY
DIVISION OF TAXATION
APPROVED AS A TAX MAP PURSUANT TO THE AUTHORITY OF
N.J.S.A. 54:5-18 AND N.J.S.A. 54:5-1
FOR THE DIRECTOR, DIVISION OF TAXATION

DATE MAR 3 1 2022 SERIAL NO. 1129

TAX MAP
CITY OF ELIZABETH
UNION COUNTY NEW JERSEY
SCALE: 1" = 50' FEB. 15, 2019
GLEN J. LLOYD
N.J. PROFESSIONAL LAND SURVEYOR LIC. #GS037598
MASER CONSULTING PA
331 NEWMAN SPRINGS ROAD, SUITE 203
RED BANK, NJ 07701

SEE SHEET 91

THIS MAP HAS BEEN DRAWN USING COMPUTER AIDED DRAFTING/DESIGN (CAD/D)