

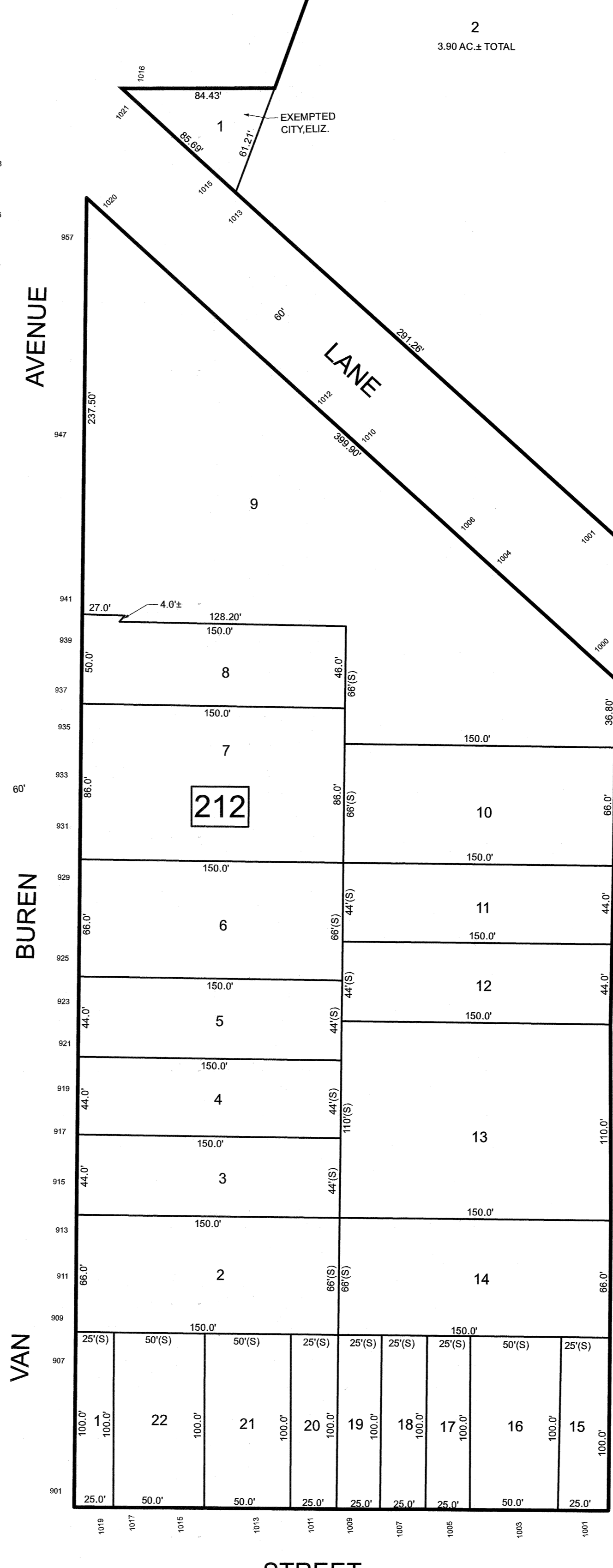
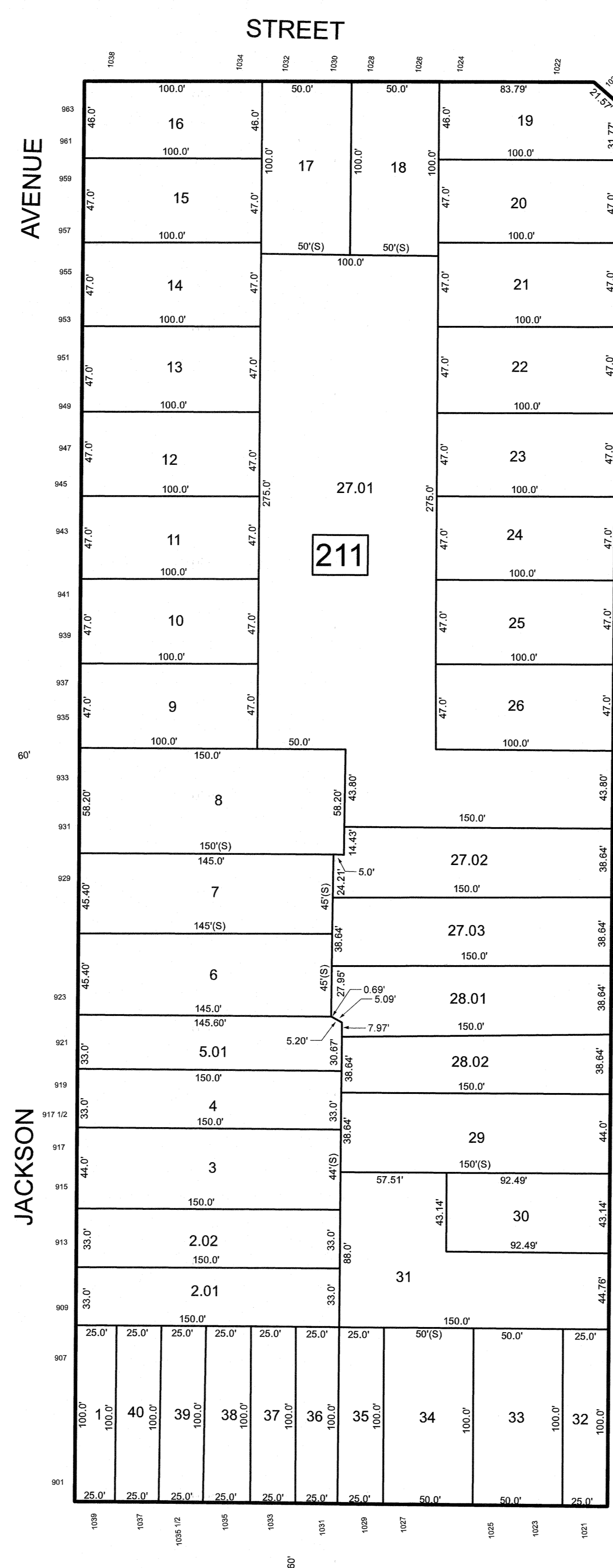
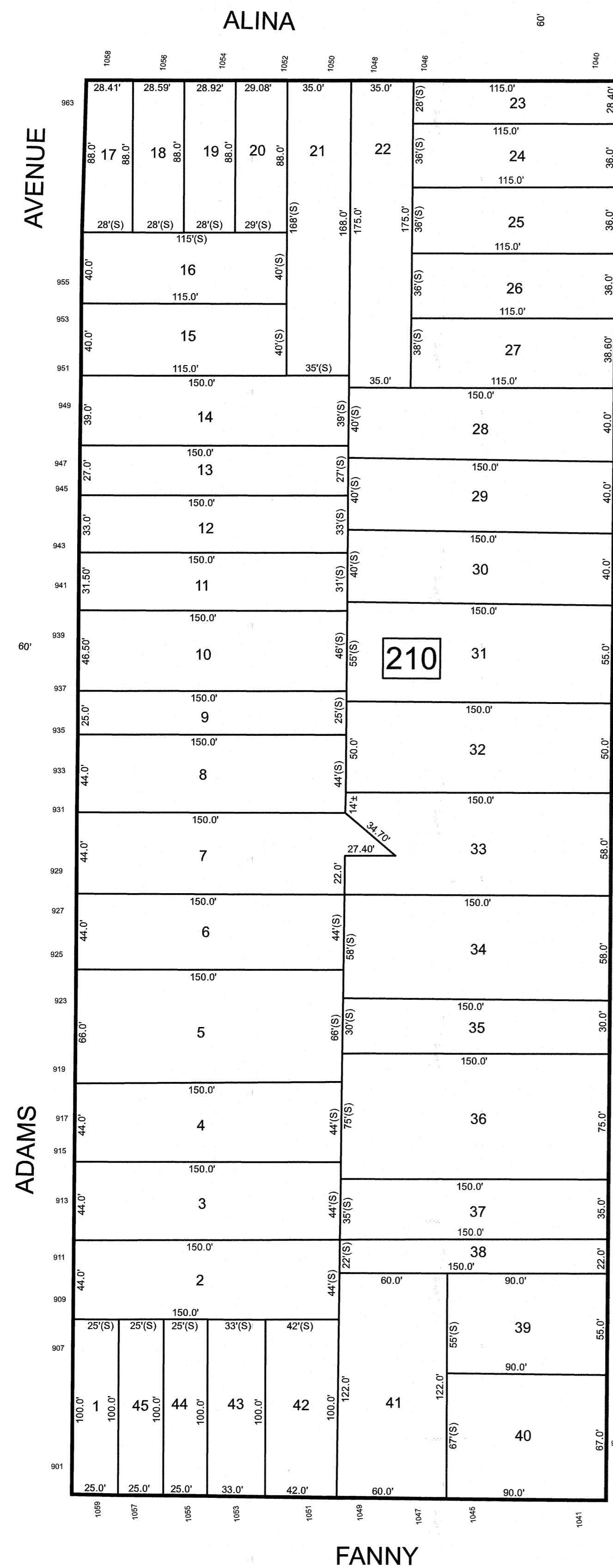
REVISIONS		
DATE	NAME	LIC. NO.

SEE SHEET 103

SEE SHEET 104

SEE SHEET 223

SEE SHEET 70




US 9 & US 1 ROUTE WIDTH VARIES

SEE SHEET 223

SEE SHEET 106

NEW JERSEY DEPARTMENT OF THE TREASURY
 DIVISION OF TAXATION
 APPROVED AS A TAX MAP PURSUANT TO THE AUTHORITY OF
 N.J.S.A. 54:15 AND N.J.S.A. 54:16-1
 FOR THE DIRECTOR, DIVISION OF TAXATION



DATE MAR 31 2022 SERIAL NO. 1129

TAX MAP
CITY OF ELIZABETH
 UNION COUNTY NEW JERSEY
 SCALE: 1" = 50' FEB. 15, 2019
GLEN J. LLOYD
 N.J. PROFESSIONAL LAND SURVEYOR LIC. #GS037598
 MASER CONSULTING PA
 331 NEWMAN SPRINGS ROAD, SUITE 203
 RED BANK, NJ 07701

SEE SHEET 101