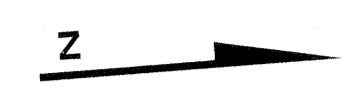


CONCORD PLACE LEXINGTON PLACE

STANTON AVENUE

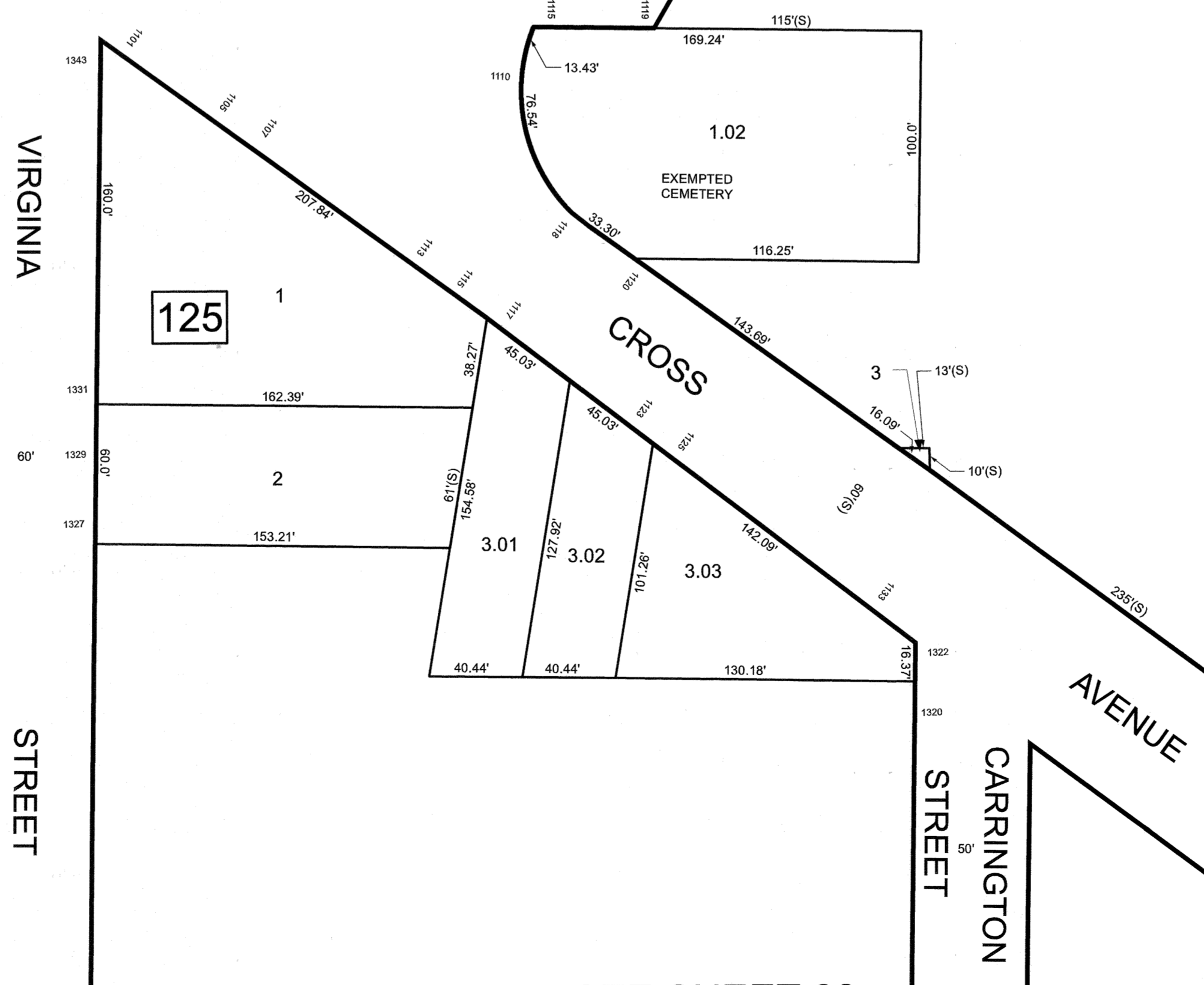
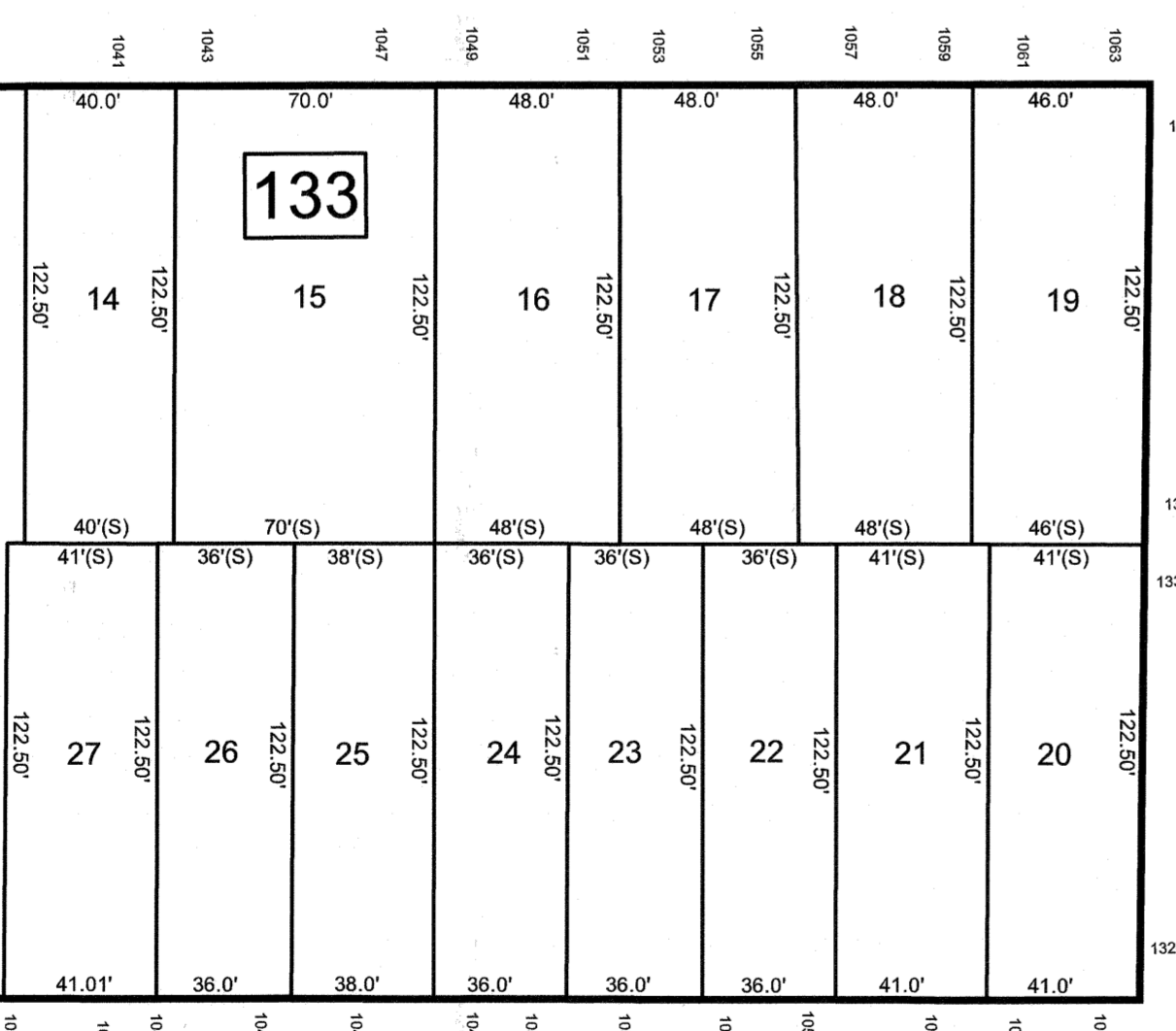
SEE SHEET 64



120  
1.01  
TOTAL  
9.98 AC.±  
EXEMPTED  
CEMETERY


Hillside Township  
Union County

CROSS AVENUE



City Of  
Newark  
Essex  
County

NEW JERSEY DEPARTMENT OF THE TREASURY  
DIVISION OF TAXATION  
APPROVED AS A TAX MAP PURSUANT TO THE AUTHORITY OF  
N.J.S.A. 54:1-18 AND N.J.S.A. 54:26-1  
FOR THE DIRECTOR, DIVISION OF TAXATION



DATE MAR 31 2022 SERIAL NO. 1129

**TAX MAP**  
**CITY OF ELIZABETH**  
UNION COUNTY NEW JERSEY  
SCALE: 1" = 50' FEB. 15, 2019  
**GLEN J. LLOYD**  
N.J. PROFESSIONAL LAND SURVEYOR LIC. #GS037598  
MASER CONSULTING PA  
331 NEWMAN SPRINGS ROAD, SUITE 203  
RED BANK, NJ 07701

SEE SHEET 63

SEE SHEET 67

SEE SHEET 66

REVISIONS		
DATE	NAME	LIC. NO.

THIS MAP HAS BEEN DRAWN USING COMPUTER AIDED DRAFTING/DESIGN (CADD)