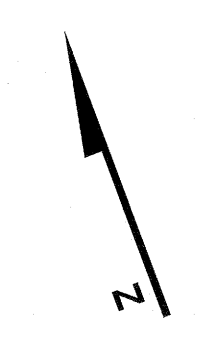


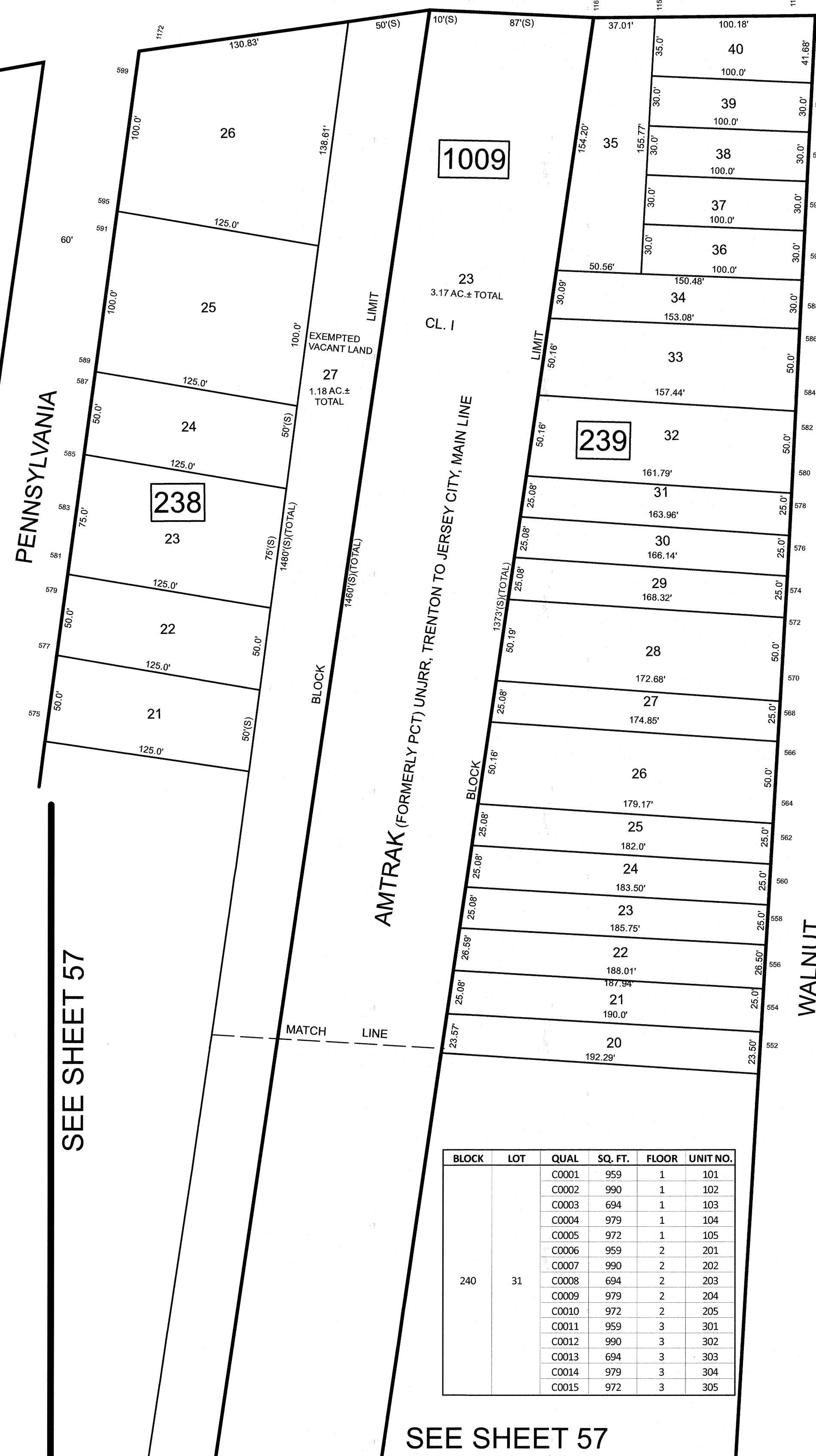
REVISIONS		
DATE	NAME	LIC. NO.

SEE SHEET 59

SEE SHEET 76

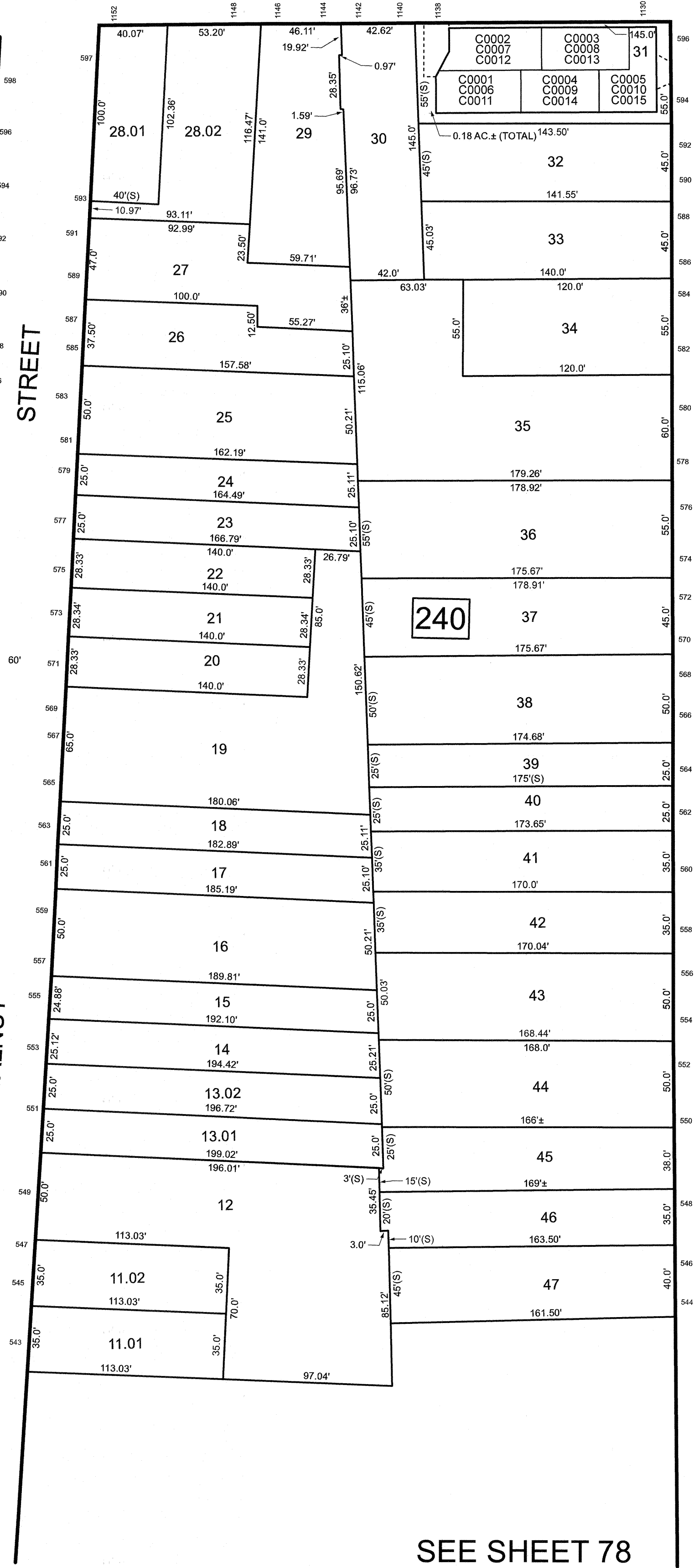


SEE SHEET 58

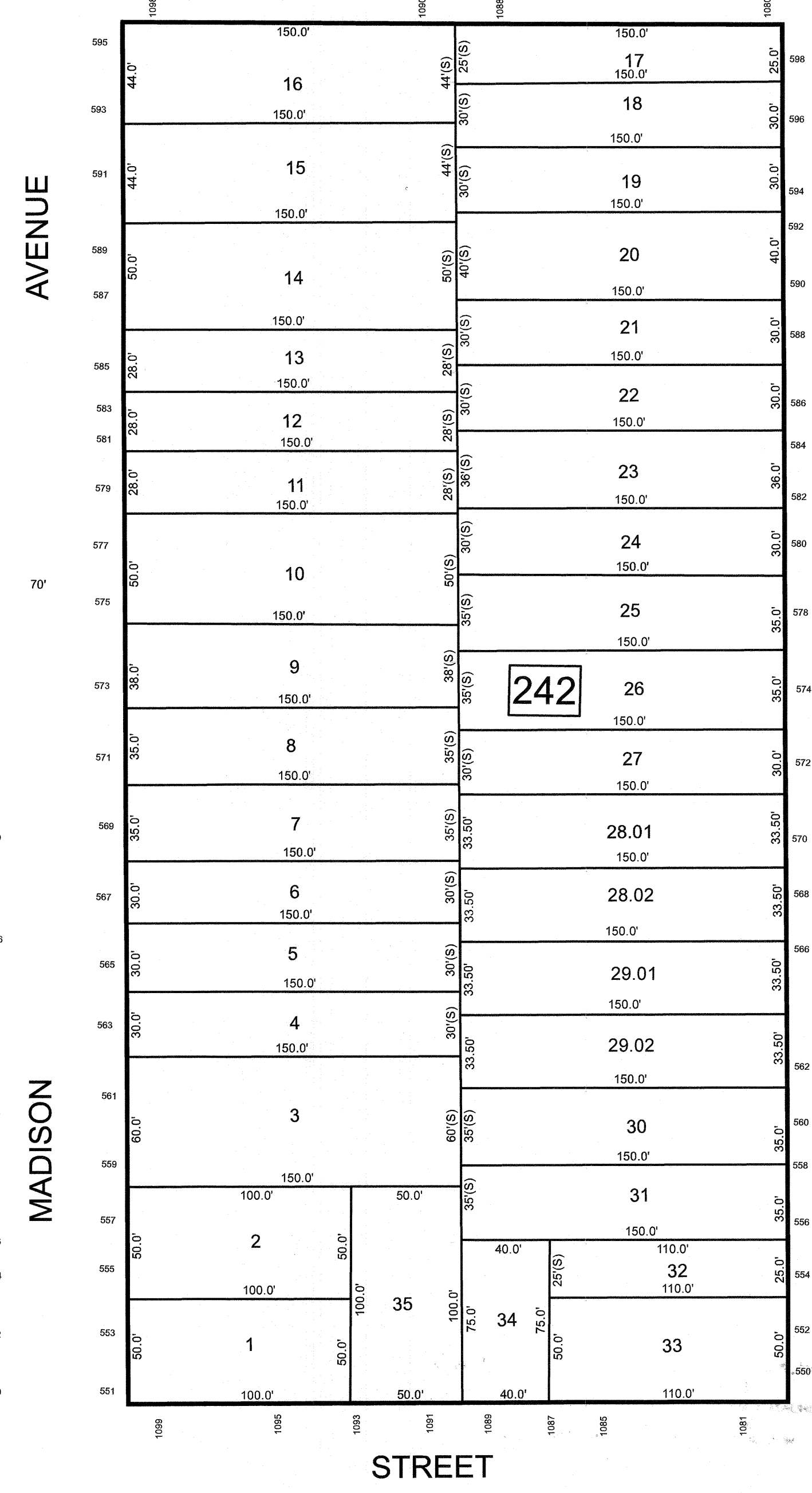
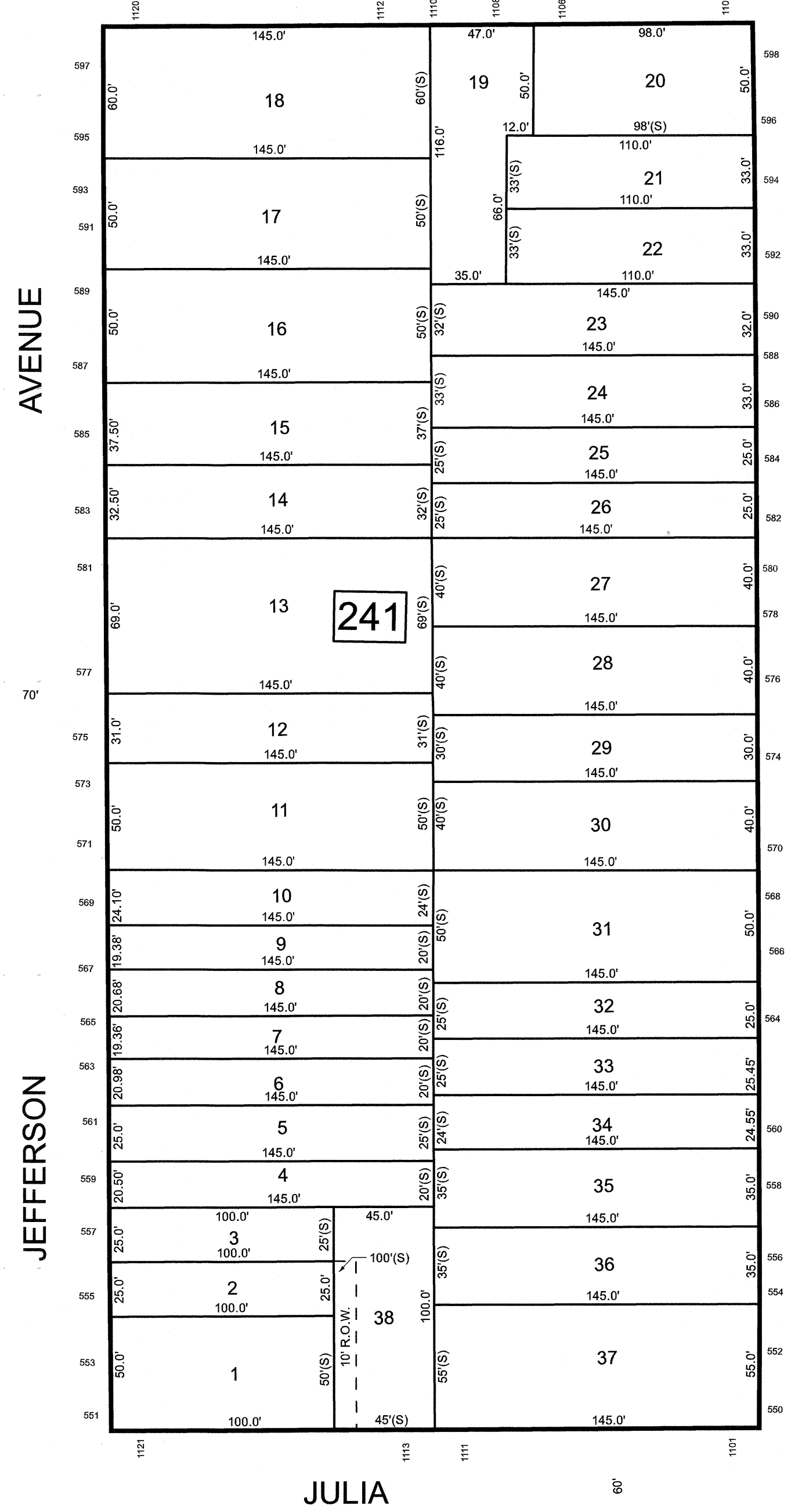


BLOCK	LOT	QUAL	SQ. FT.	FLOOR	UNIT NO.
240	31	C0001	950	1	101
		C0002	990	1	102
		C0003	694	1	103
		C0004	979	1	104
		C0005	972	1	105
		C0006	959	2	201
		C0007	990	2	202
		C0008	694	2	203
		C0009	979	2	204
		C0010	972	2	205
		C0011	959	3	301
		C0012	990	3	302
		C0013	694	3	303
		C0014	979	3	304
		C0015	972	3	305

SEE SHEET 57



SEE SHEET 78



SEE SHEET 98

NEW JERSEY DEPARTMENT OF THE TREASURY
 DIVISION OF TAXATION
 APPROVED AS A TAX MAP PURSUANT TO THE AUTHORITY OF
 N.J.S.A. 54:1-16 AND N.J.S.A. 54:28-1
 FOR THE DIRECTOR, DIVISION OF TAXATION

DATE **MAR 31 2022** SERIAL NO. **1129**

THIS MAP HAS BEEN DRAWN USING COMPUTER AIDED DRAFTING/DESIGN (CADD)

TAX MAP
CITY OF ELIZABETH
 UNION COUNTY NEW JERSEY
 SCALE: 1" = 50' FEB. 15, 2019
GLEN J. LLOYD
 N.J. PROFESSIONAL LAND SURVEYOR LIC. #GS037598
 MASER CONSULTING PA
 331 NEWMAN SPRINGS ROAD, SUITE 203
 RED BANK, NJ 07701