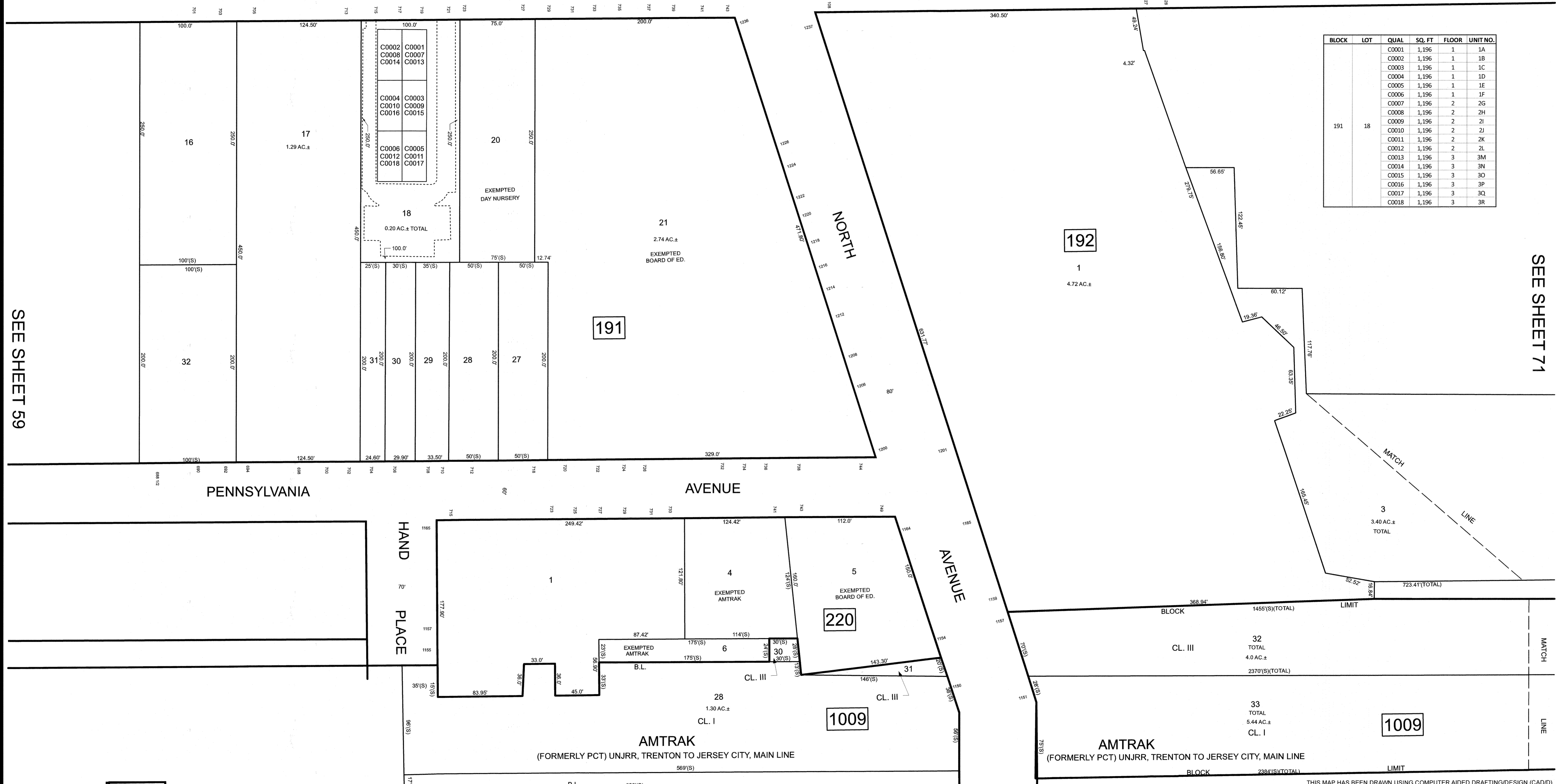
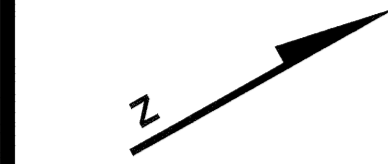


REVISIONS		
DATE	NAME	LIC. NO.

SEE SHEET 60

SEE SHEET 72



BLOCK	LOT	QUAL	SQ. FT	FLOOR	UNIT NO.
191	18	C0001	1,196	1	1A
191	18	C0002	1,196	1	1B
191	18	C0003	1,196	1	1C
191	18	C0004	1,196	1	1D
191	18	C0005	1,196	1	1E
191	18	C0006	1,196	1	1F
191	18	C0007	1,196	2	2G
191	18	C0008	1,196	2	2H
191	18	C0009	1,196	2	2I
191	18	C0010	1,196	2	2J
191	18	C0011	1,196	2	2K
191	18	C0012	1,196	2	2L
191	18	C0013	1,196	3	3M
191	18	C0014	1,196	3	3N
191	18	C0015	1,196	3	3O
191	18	C0016	1,196	3	3P
191	18	C0017	1,196	3	3Q
191	18	C0018	1,196	3	3R

SEE SHEET 59

SEE SHEET 71

SEE SHEET 75

SEE SHEET 74

NEW JERSEY DEPARTMENT OF THE TREASURY  
 DIVISION OF TAXATION  
 APPROVED AS A TAX MAP PURSUANT TO THE AUTHORITY OF  
 N.J.S.A. 54:5-18 AND N.J.S.A. 54:5-1  
 FOR THE DIRECTOR, DIVISION OF TAXATION

DATE MAR 3 1 2022 SERIAL NO. 1129

**TAX MAP**  
**CITY OF ELIZABETH**  
 UNION COUNTY NEW JERSEY  
 SCALE: 1" = 50' FEB. 15, 2019  
**GLEN J. LLOYD**  
 N.J. PROFESSIONAL LAND SURVEYOR LIC. #GS037598  
 MASER CONSULTING PA  
 331 NEWMAN SPRINGS ROAD, SUITE 203  
 RED BANK, NJ 07701