

REVISIONS		
DATE	NAME	LIC. NO.

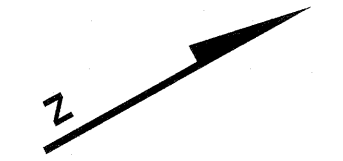
SEE SHEET 67

SEE SHEET 66

SHERMAN AVENUE
NEWARK

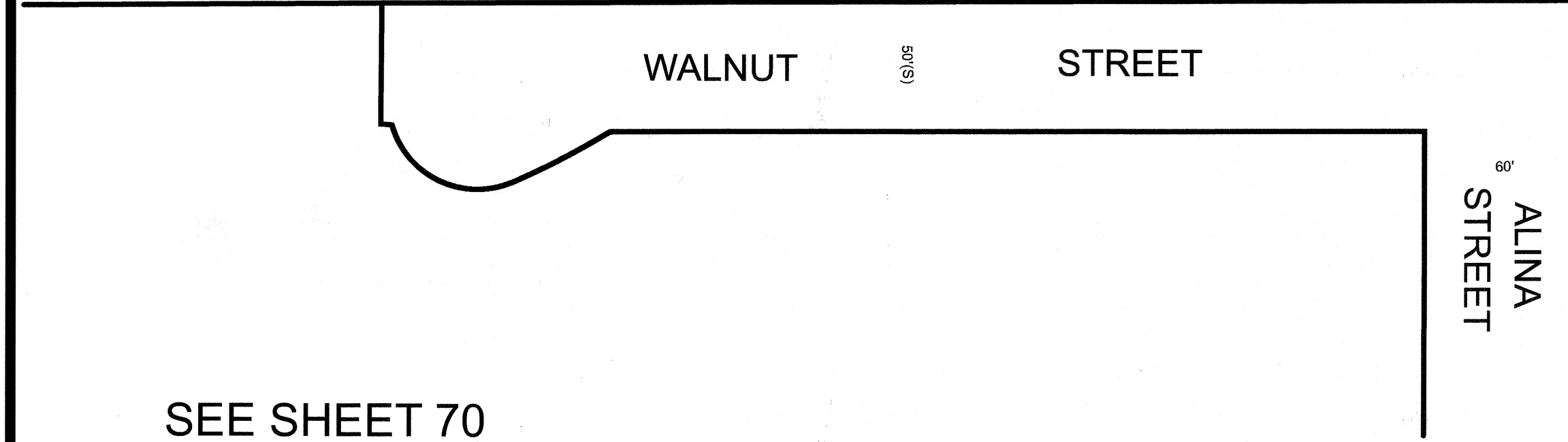
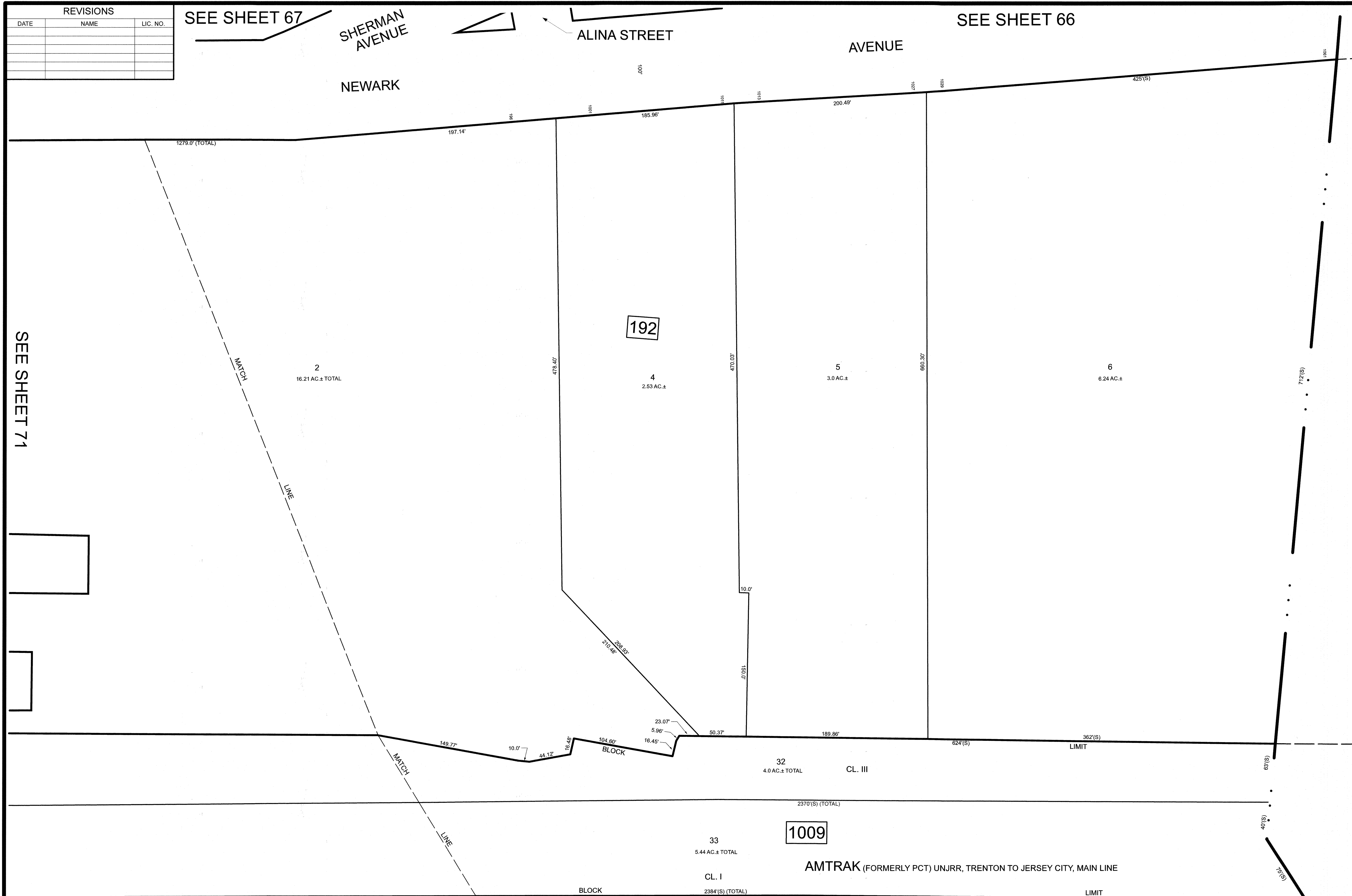
ALINA STREET

AVENUE



SEE SHEET 71

CITY OF NEWARK
ESSEX COUNTY



SEE SHEET 70

SEE SHEET 69

THIS MAP HAS BEEN DRAWN USING COMPUTER AIDED DRAFTING/DESIGN (CADD)

NEW JERSEY DEPARTMENT OF THE TREASURY
DIVISION OF TAXATION
APPROVED AS A TAX MAP PURSUANT TO THE AUTHORITY OF
N.J.S.A. 84:1-18 AND N.J.S.A. 84:2D-1
FOR THE DIRECTOR, DIVISION OF TAXATION



DATE MAR 31 2022 SERIAL NO. 1129

TAX MAP
CITY OF ELIZABETH
UNION COUNTY NEW JERSEY
SCALE: 1" = 50' FEB. 15, 2019
GLEN J. LLOYD

N.J. PROFESSIONAL LAND SURVEYOR LIC. #GS037598
MASER CONSULTING PA
331 NEWMAN SPRINGS ROAD, SUITE 203
RED BANK, NJ 07701