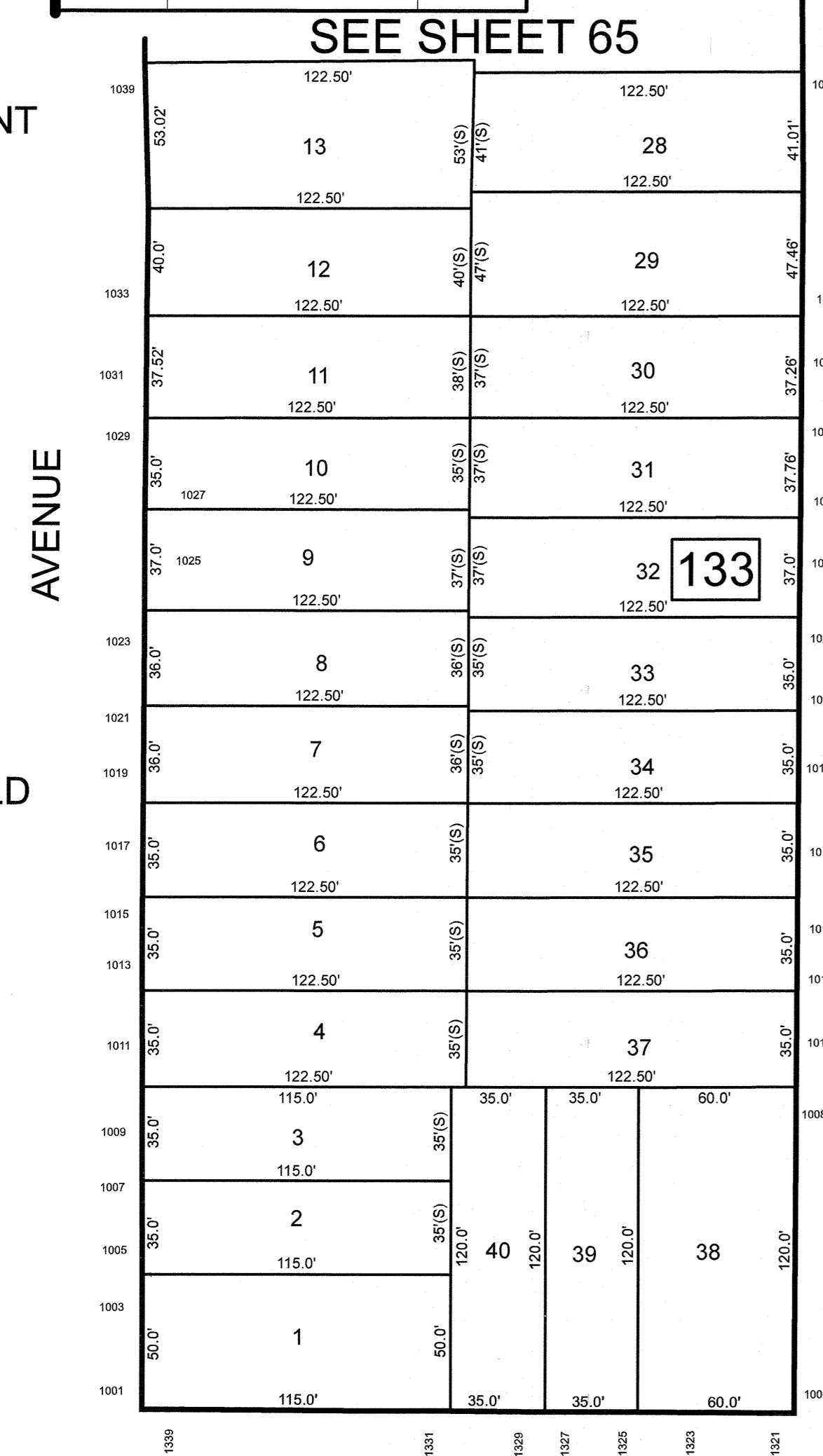


REVISIONS		
DATE	NAME	LIC. NO.

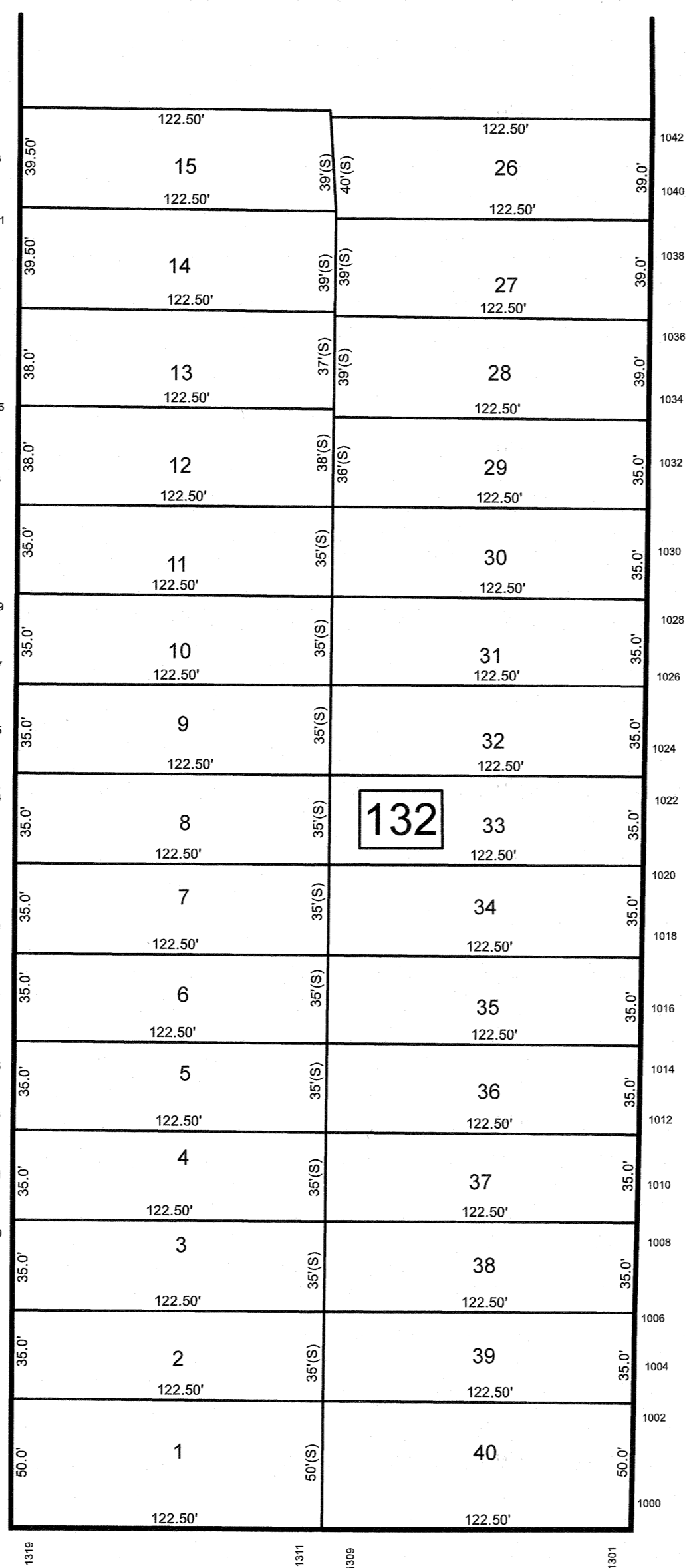
FREMONT PLACE

GARFIELD PLACE

SEE SHEET 63

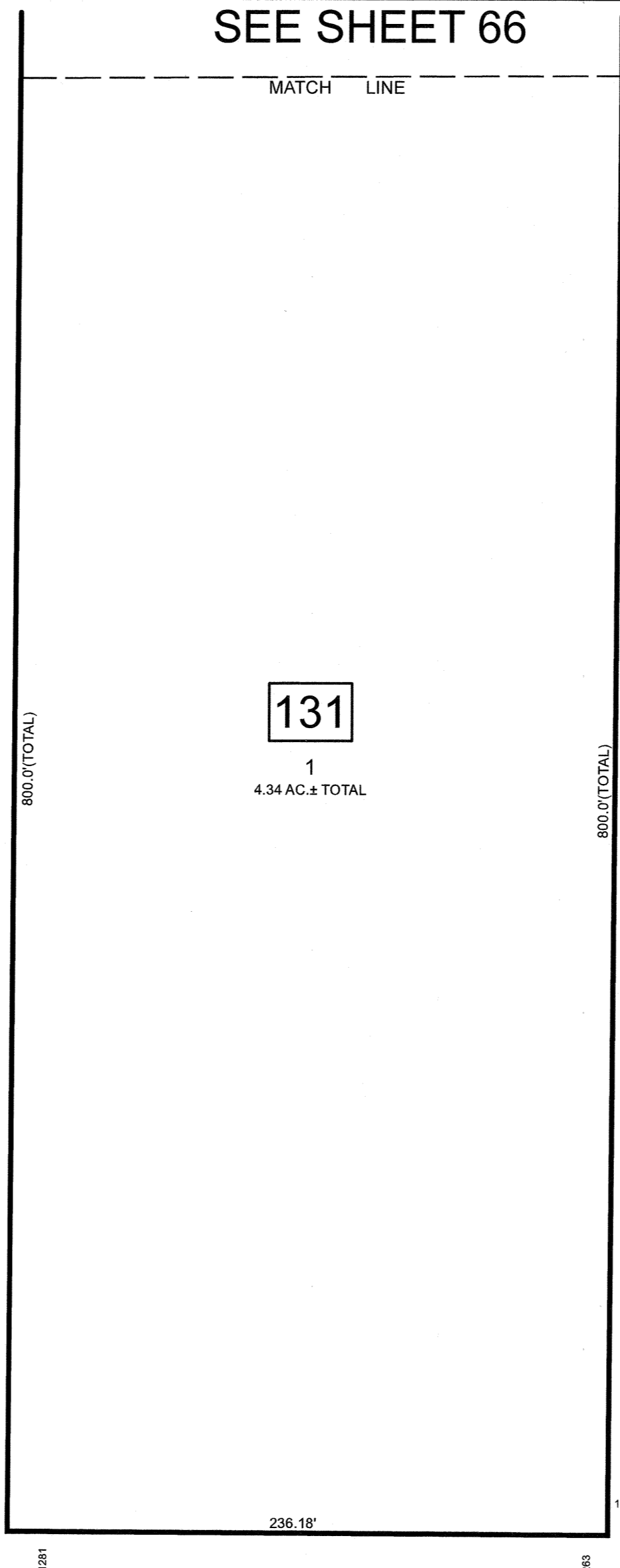


ROAD



AVENUE

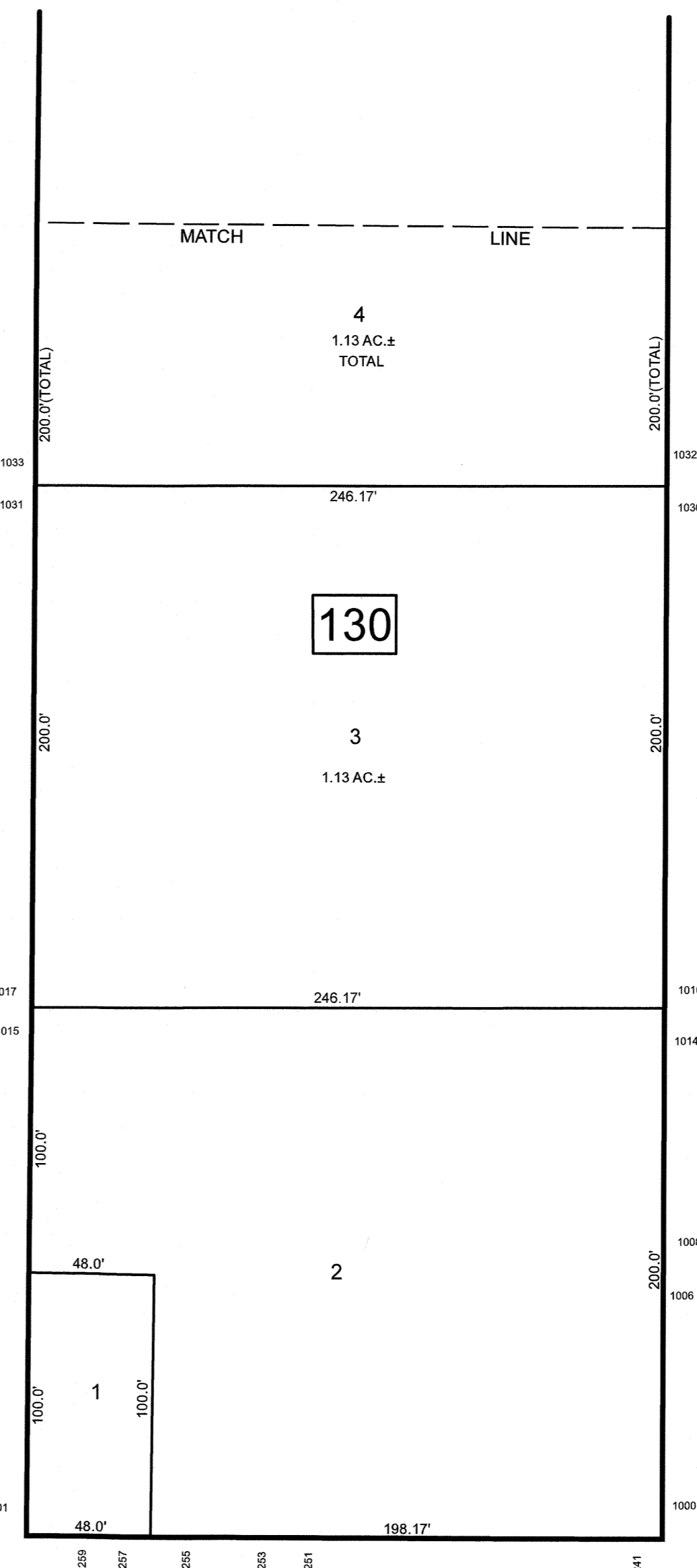
SEE SHEET 66



AVENUE

TRAVERS AVENUE

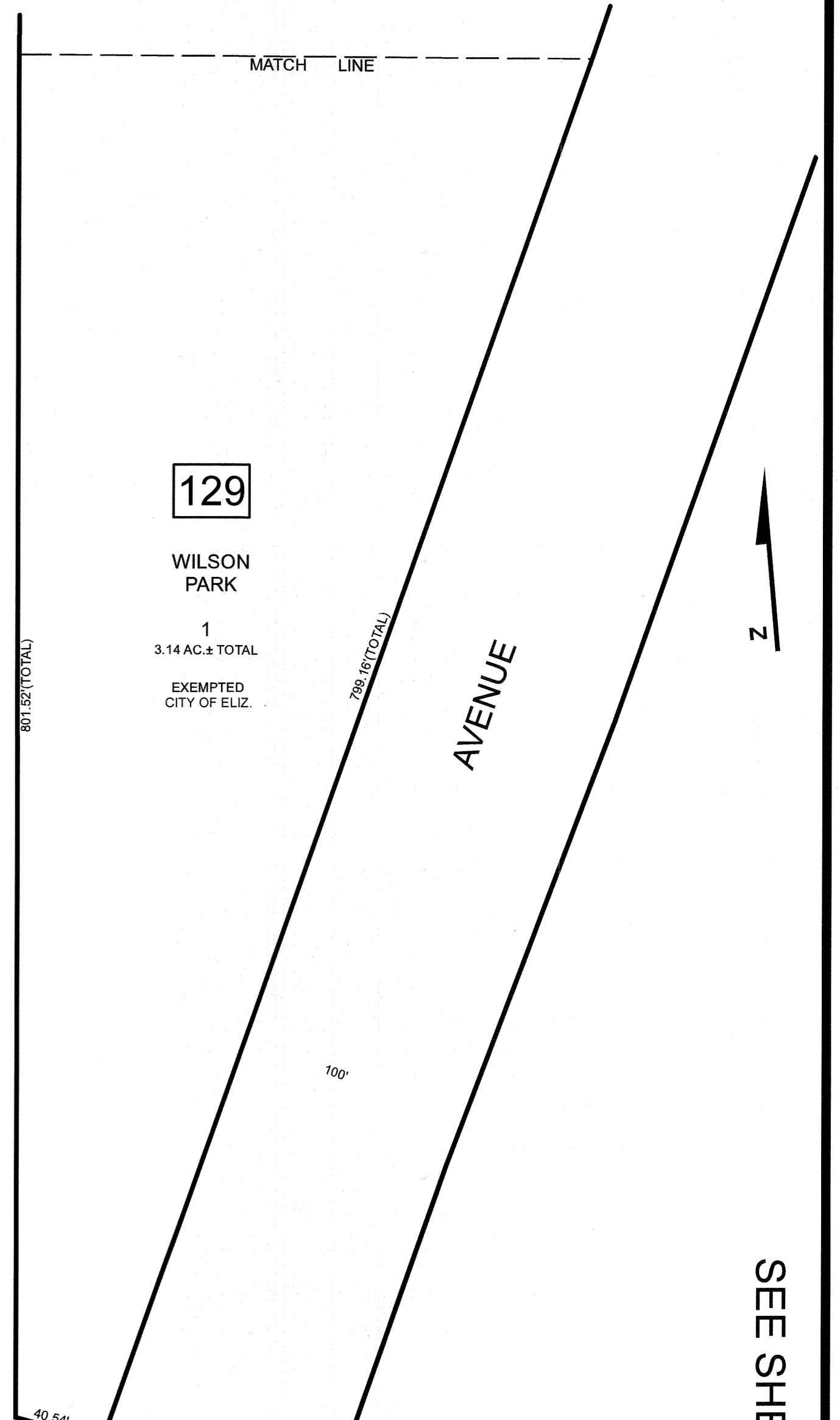
STREET



AVENUE

SHERMAN

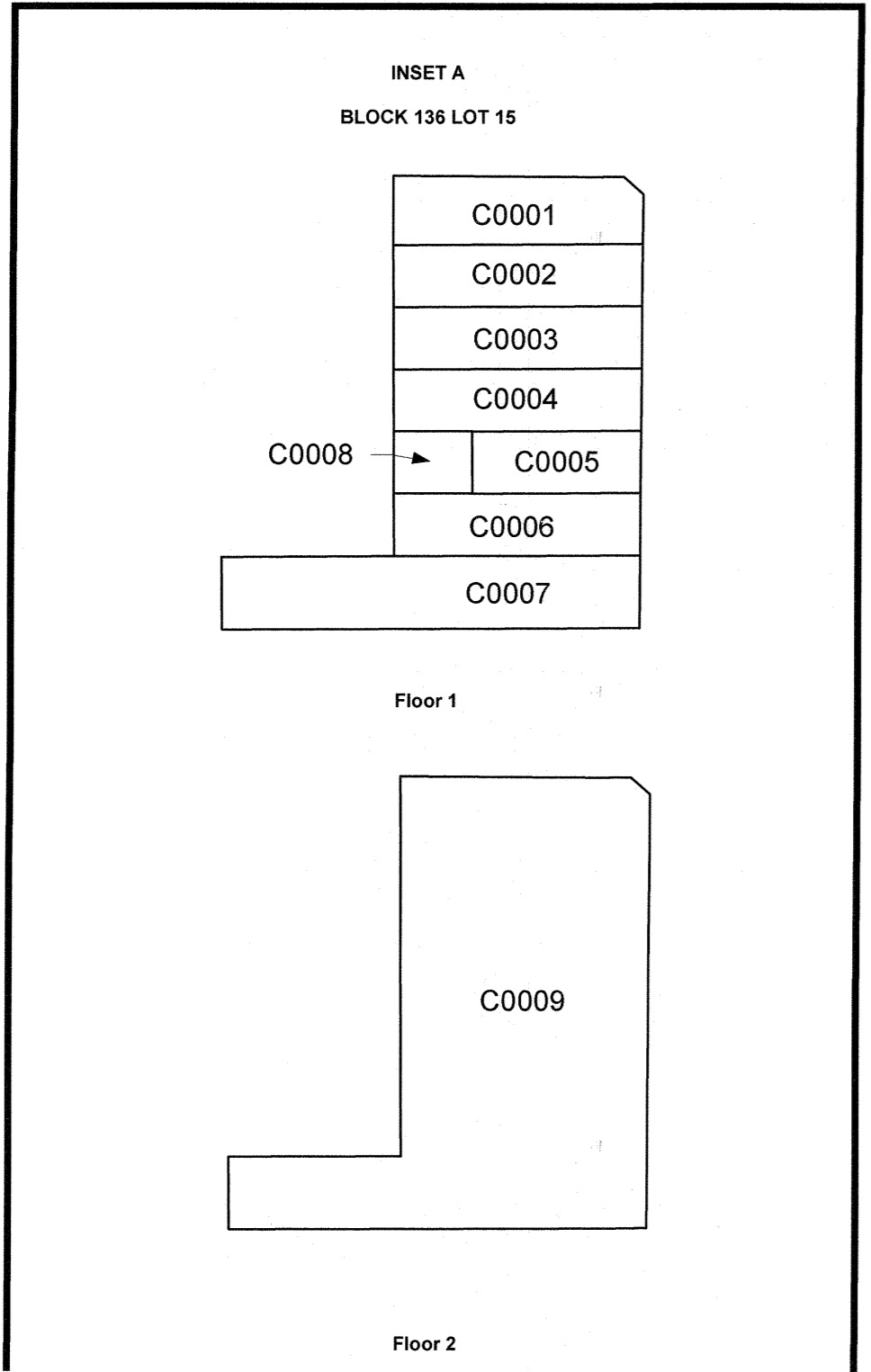
NEWARK



SEE SHEET 68

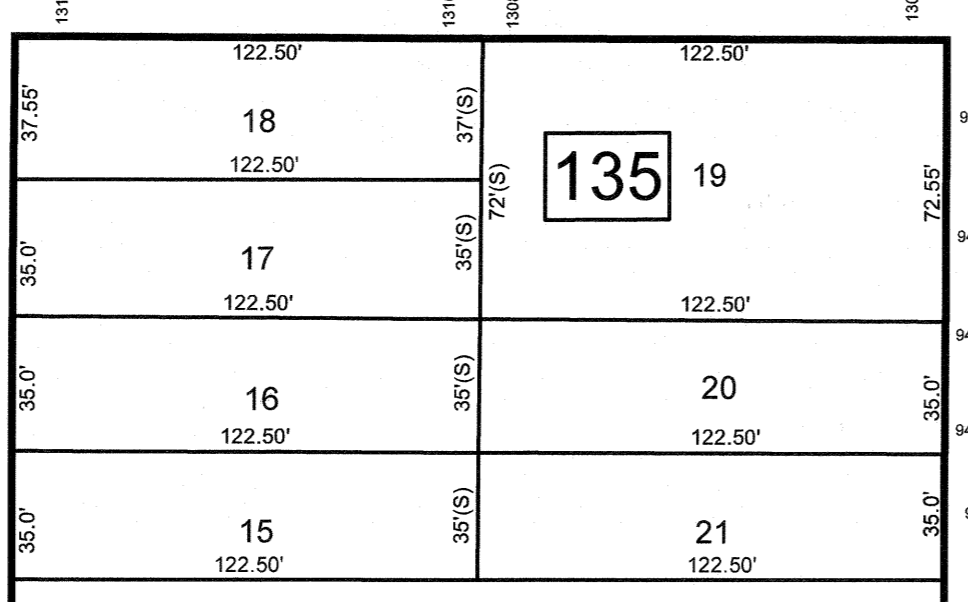
70'

CROSS



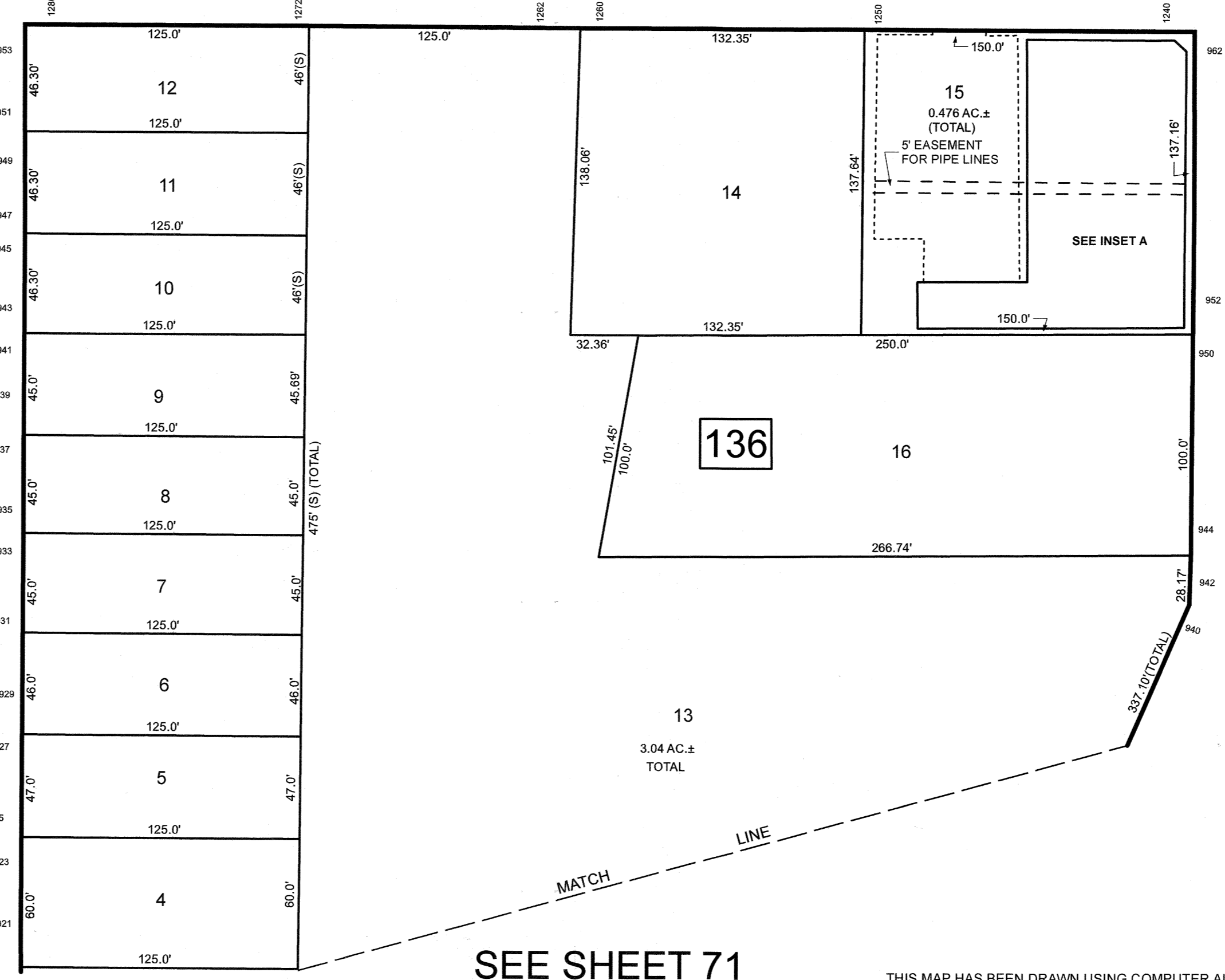
SEE SHEET 61

KILSYTH



BLOCK	LOT	QUAL	SQ. FT.	FLOOR	UNIT NO.
136	15	C0001	1459	1	A1
		C0002	1120	1	B1
		C0003	1120	1	C1
		C0004	1,102	1	D1
		C0005	909	1	E1
		C0006	1,852	1	F1
		C0007	2890	1	G1
		C0008	201	1	H1
		C0009	10,064	2	H2

SHERIDAN



SEE SHEET 71

THIS MAP HAS BEEN DRAWN USING COMPUTER AIDED DRAFTING/DESIGN (CAD/D)

NEW JERSEY DEPARTMENT OF THE TREASURY
DIVISION OF TAXATION
APPROVED AS A TAX MAP PURSUANT TO THE AUTHORITY OF
N.J.S.A. 54:1-15 AND N.J.S.A. 54:30-1
FOR THE DIRECTOR, DIVISION OF TAXATION

DATE MAR 3 1 2022 SERIAL NO. 1129

TAX MAP
CITY OF ELIZABETH
UNION COUNTY NEW JERSEY
SCALE: 1" = 50' FEB. 15, 2019
GLEN J. LLOYD
N.J. PROFESSIONAL LAND SURVEYOR LIC. #GS037598
MASER CONSULTING PA
331 NEWMAN SPRINGS ROAD, SUITE 203
RED BANK, NJ 07701