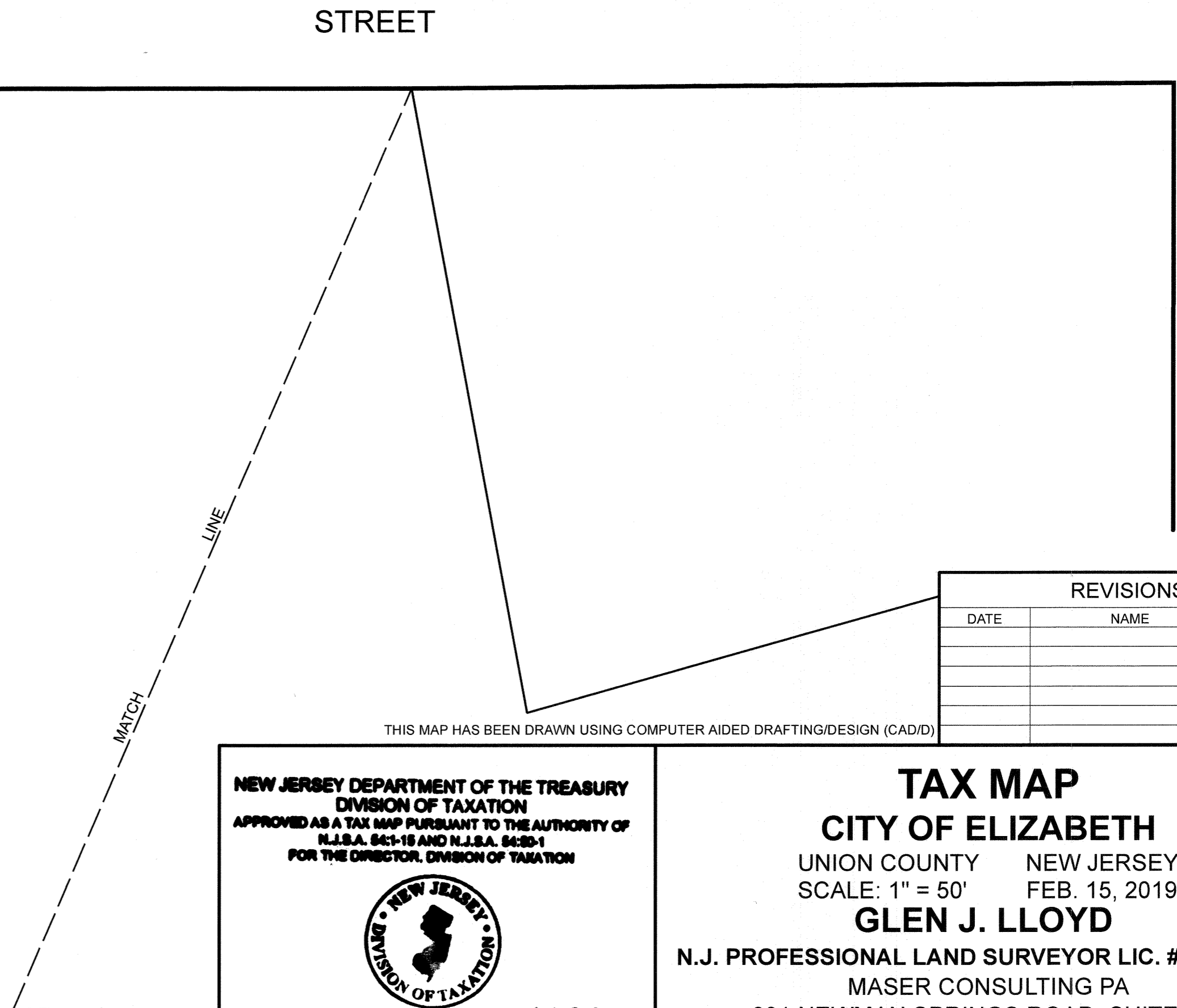
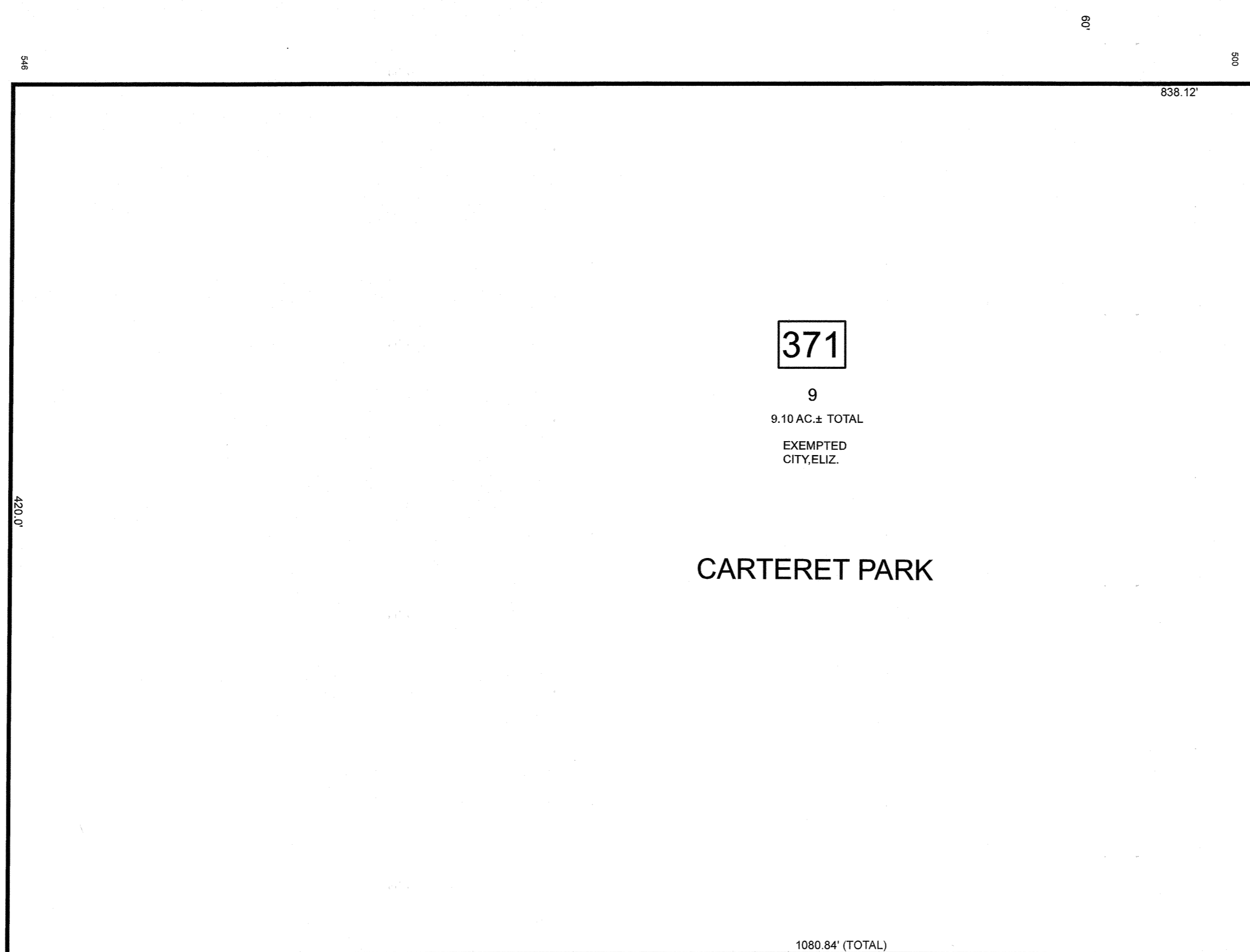
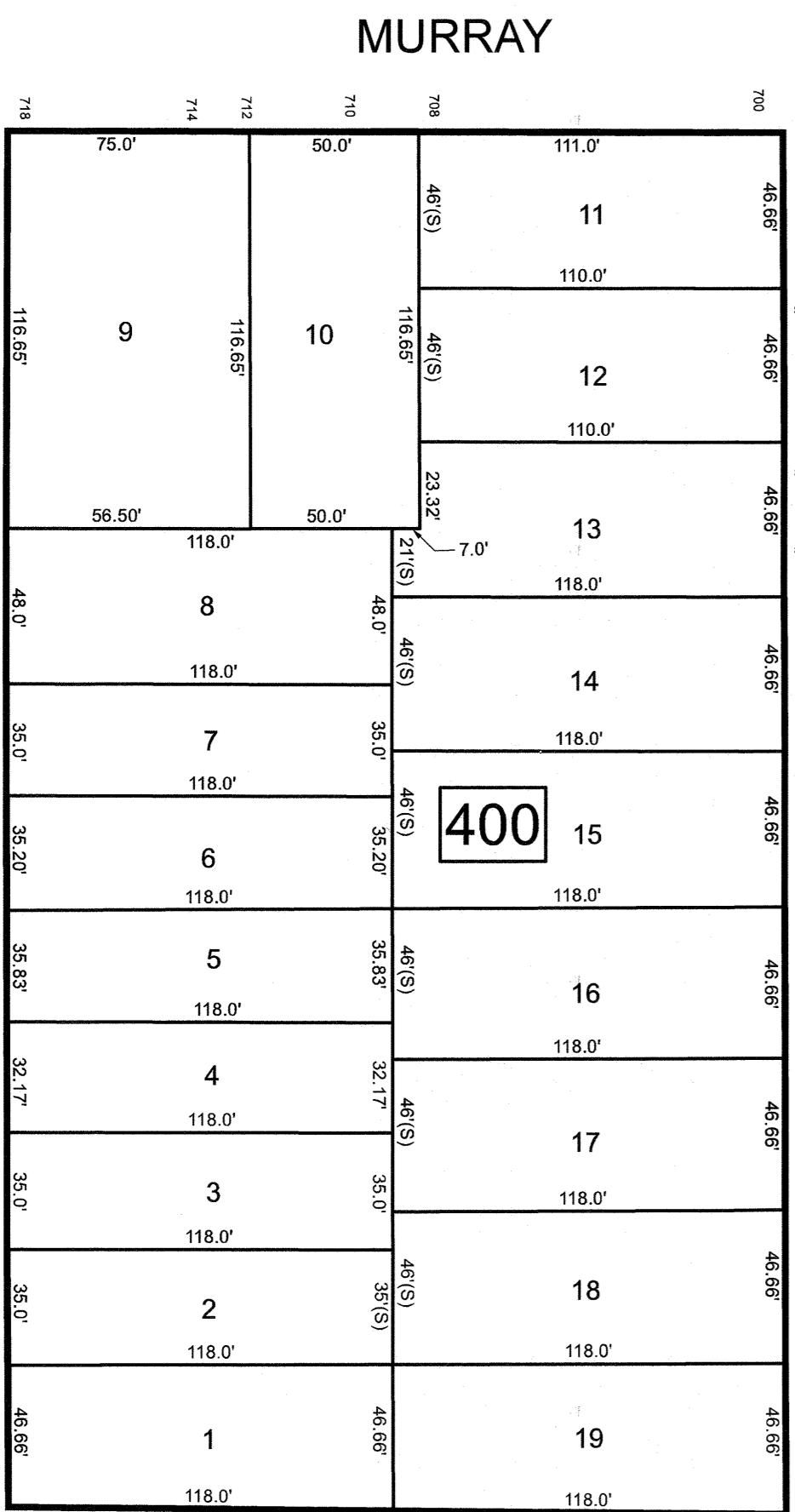
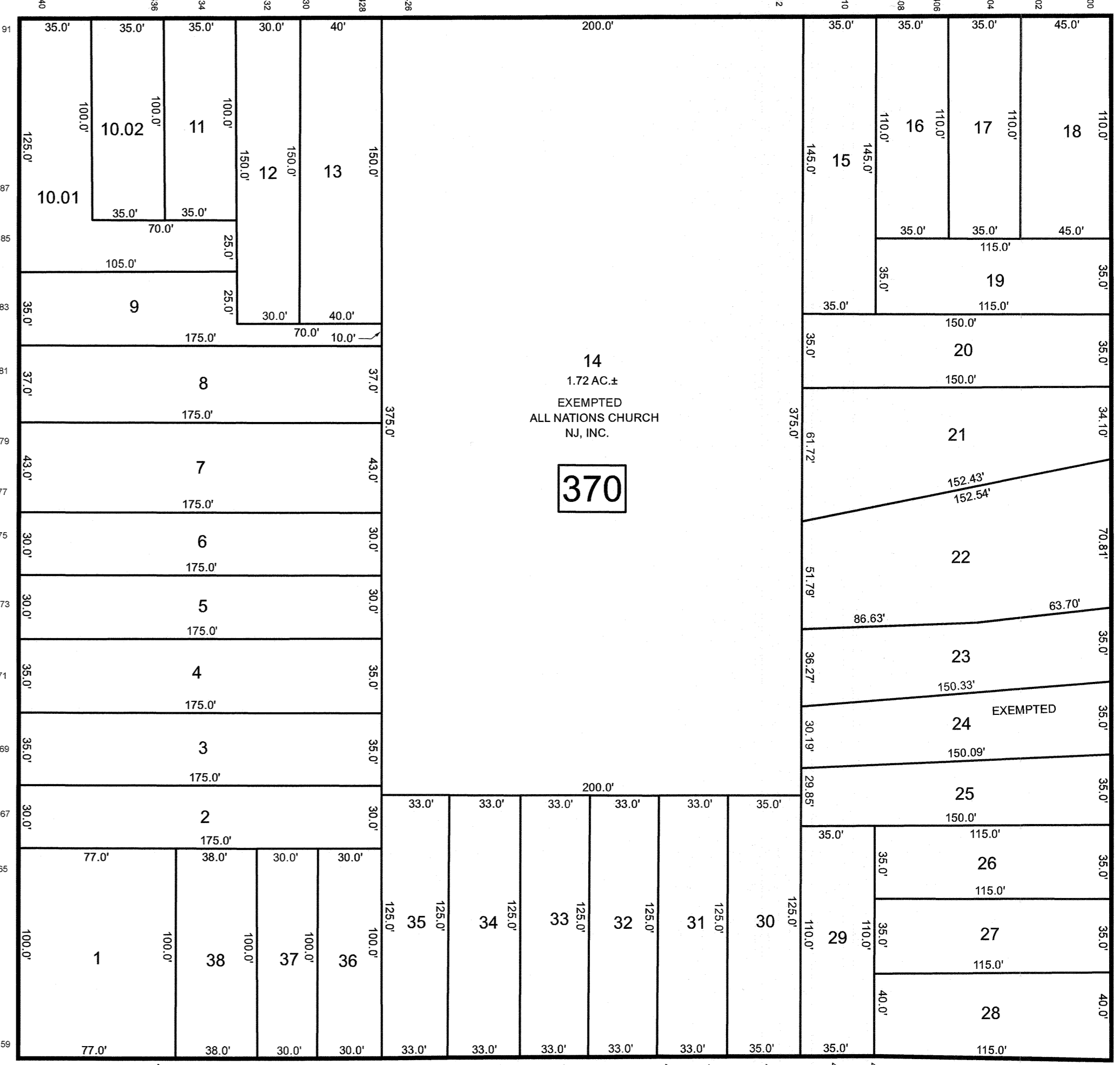
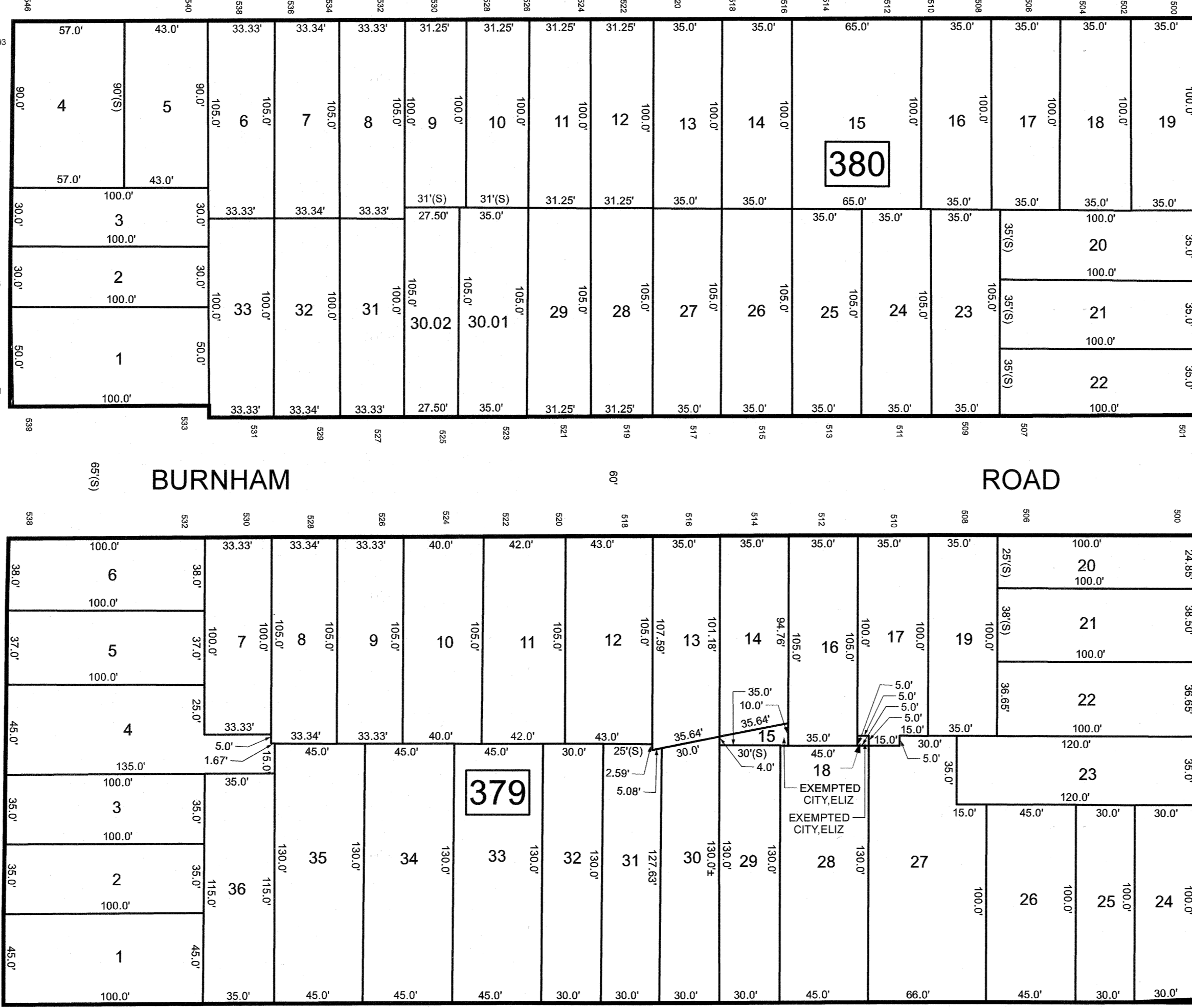
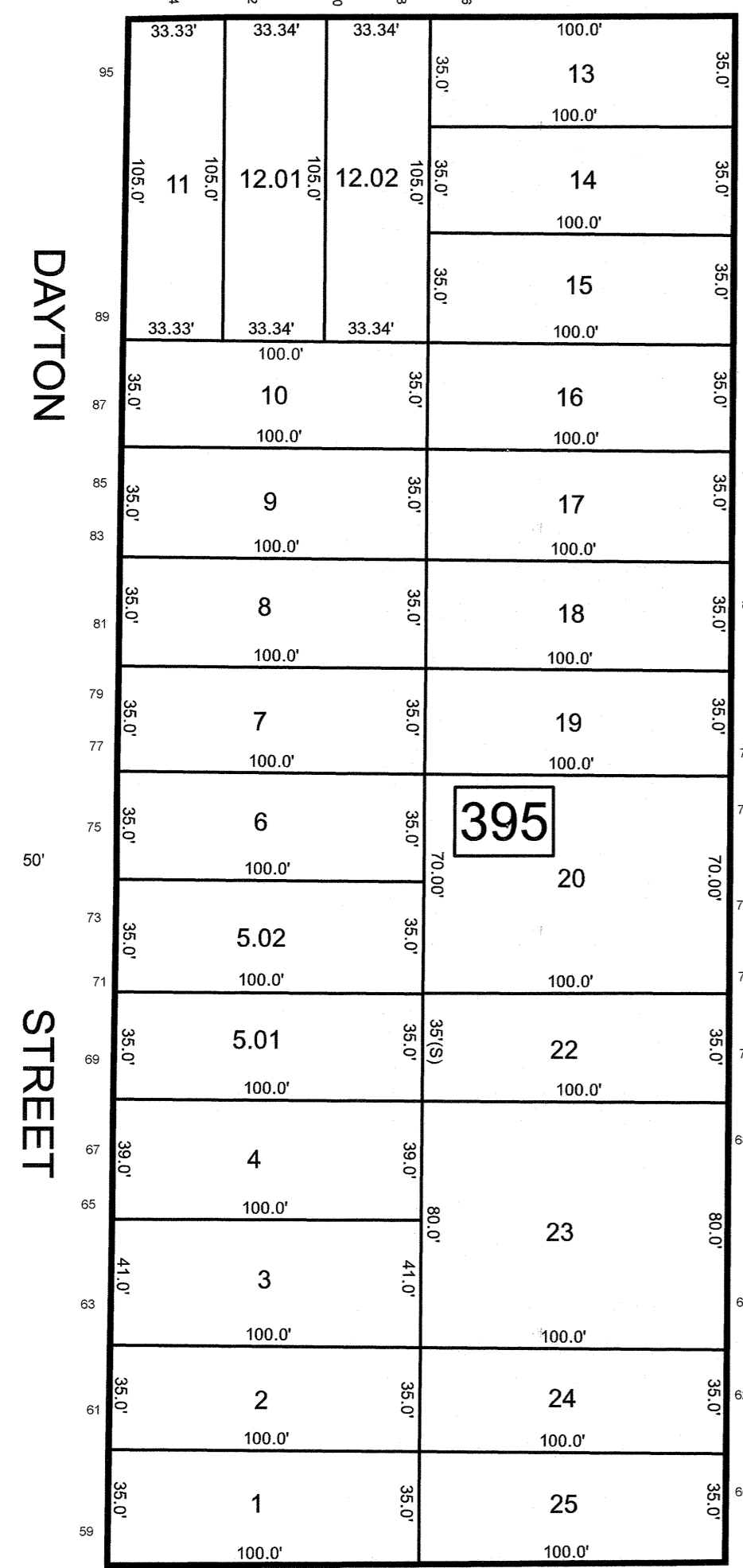


SEE SHEET 26
LINDEN

SEE SHEET 27
AVENUE



SEE SHEET 44

EATON ST.

DAYTON STREET

ELMORA AVENUE

BURNHAM ROAD

ROAD

CLOVER STREET

GROVE STREET

SEE SHEET 45

DAYTON STREET

VINE STREET

AVENUE

CARTERET PARK

NEWCOMB PLACE

CLOVER STREET

SEE SHEET 49

SEE SHEET 27

SEE SHEET 49

REVISIONS		
DATE	NAME	LIC. NO.

THIS MAP HAS BEEN DRAWN USING COMPUTER AIDED DRAFTING/DESIGN (CADD)

NEW JERSEY DEPARTMENT OF THE TREASURY
DIVISION OF TAXATION
APPROVED AS A TAX MAP PURSUANT TO THE AUTHORITY OF
N.J.S.A. 84:1-15 AND N.J.S.A. 84:20-1
FOR THE DIRECTOR, DIVISION OF TAXATION

DATE MAR 31 2022 SERIAL NO. 1129

TAX MAP
CITY OF ELIZABETH
UNION COUNTY NEW JERSEY
SCALE: 1" = 50' FEB. 15, 2019
GLEN J. LLOYD
N.J. PROFESSIONAL LAND SURVEYOR LIC. #GS037598
MASER CONSULTING PA
331 NEWMAN SPRINGS ROAD, SUITE 203
RED BANK, NJ 07701