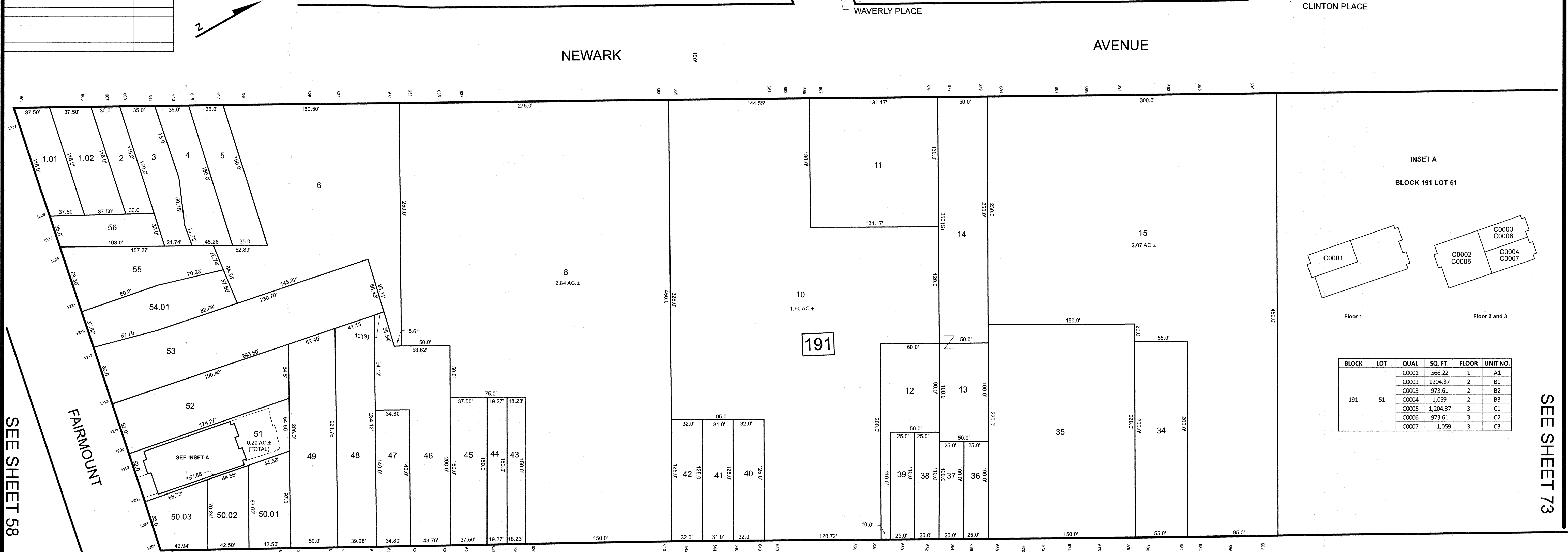


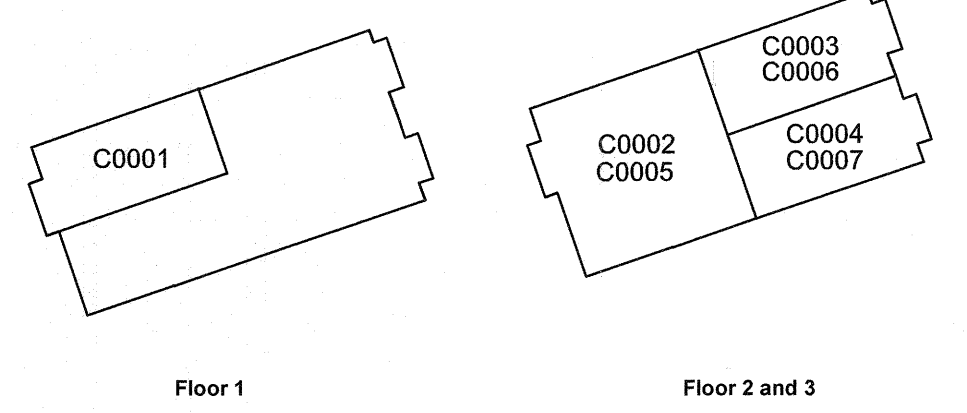
REVISIONS		
DATE	NAME	LIC. NO.

SEE SHEET 36

SEE SHEET 60



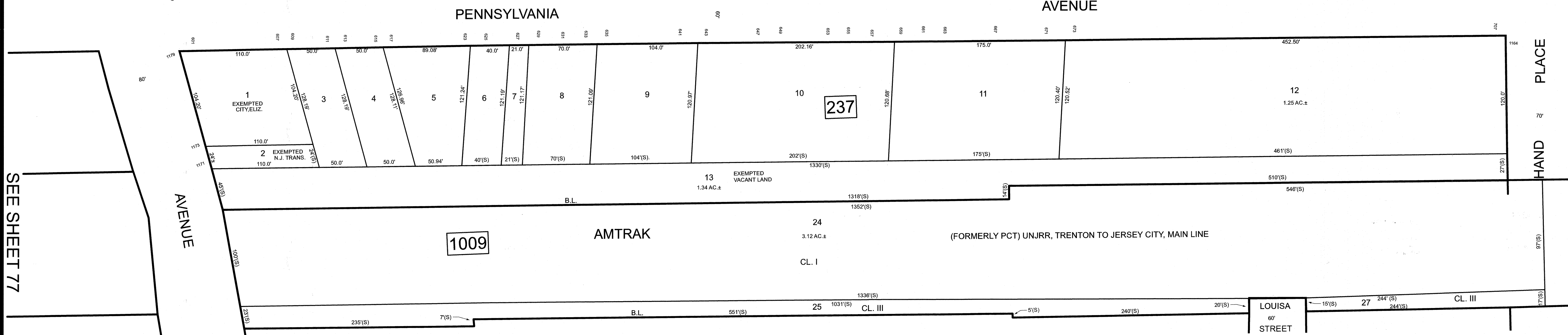
INSET A
BLOCK 191 LOT 51



BLOCK	LOT	QUAL	SQ. FT.	FLOOR	UNIT NO.
191	51	C0001	566.22	1	A1
		C0002	1204.37	2	B1
		C0003	973.61	2	B2
		C0004	1,059	2	B3
		C0005	1,204.37	3	C1
		C0006	973.61	3	C2
		C0007	1,059	3	C3

SEE SHEET 58

SEE SHEET 73



THIS MAP HAS BEEN DRAWN USING COMPUTER AIDED DRAFTING/DESIGN (CAD/D)

NEW JERSEY DEPARTMENT OF THE TREASURY
DIVISION OF TAXATION
APPROVED AS A TAX MAP PURSUANT TO THE AUTHORITY OF
N.J.S.A. 54:3-15 AND N.J.S.A. 54:3-1
FOR THE DIRECTOR, DIVISION OF TAXATION



DATE MAR 31 2022 SERIAL NO. 1129

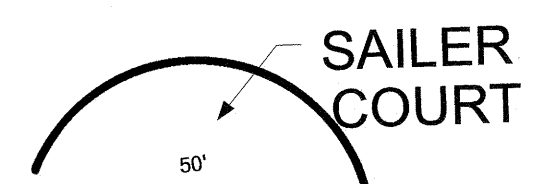
TAX MAP

CITY OF ELIZABETH

UNION COUNTY NEW JERSEY
SCALE: 1" = 50' FEB. 15, 2019

GLEN J. LLOYD

N.J. PROFESSIONAL LAND SURVEYOR LIC. #GS037598
MASER CONSULTING PA
331 NEWMAN SPRINGS ROAD, SUITE 203
RED BANK, NJ 07701



SEE SHEET 76

SEE SHEET 77

SEE SHEET 78