

REVISIONS		
DATE	NAME	LIC. NO.

SEE SHEET 38

SEE SHEET 57

WHITEHEAD PLACE
SEE SHEET 57

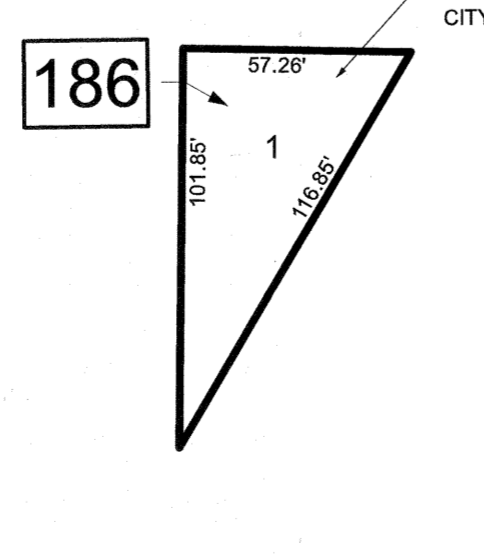
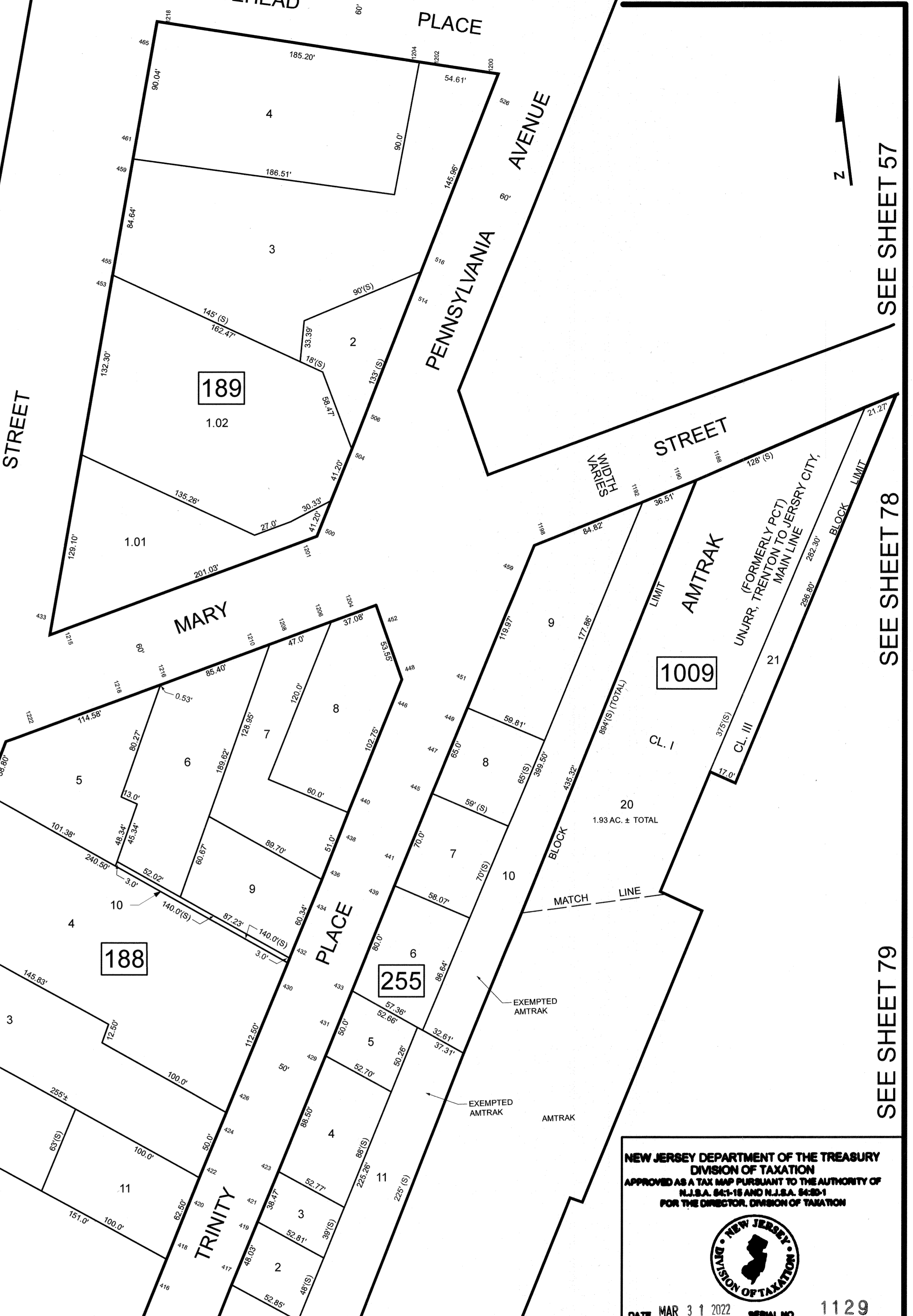
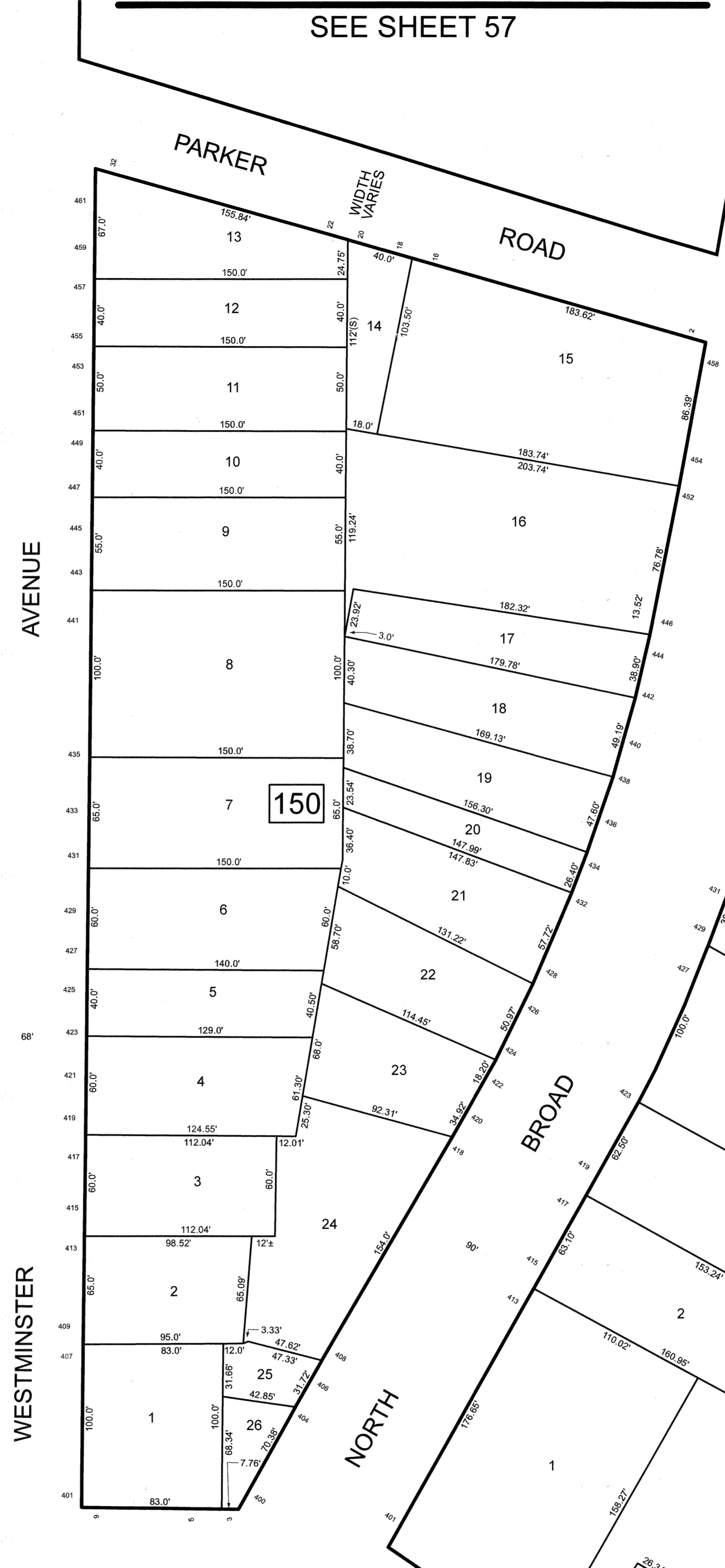
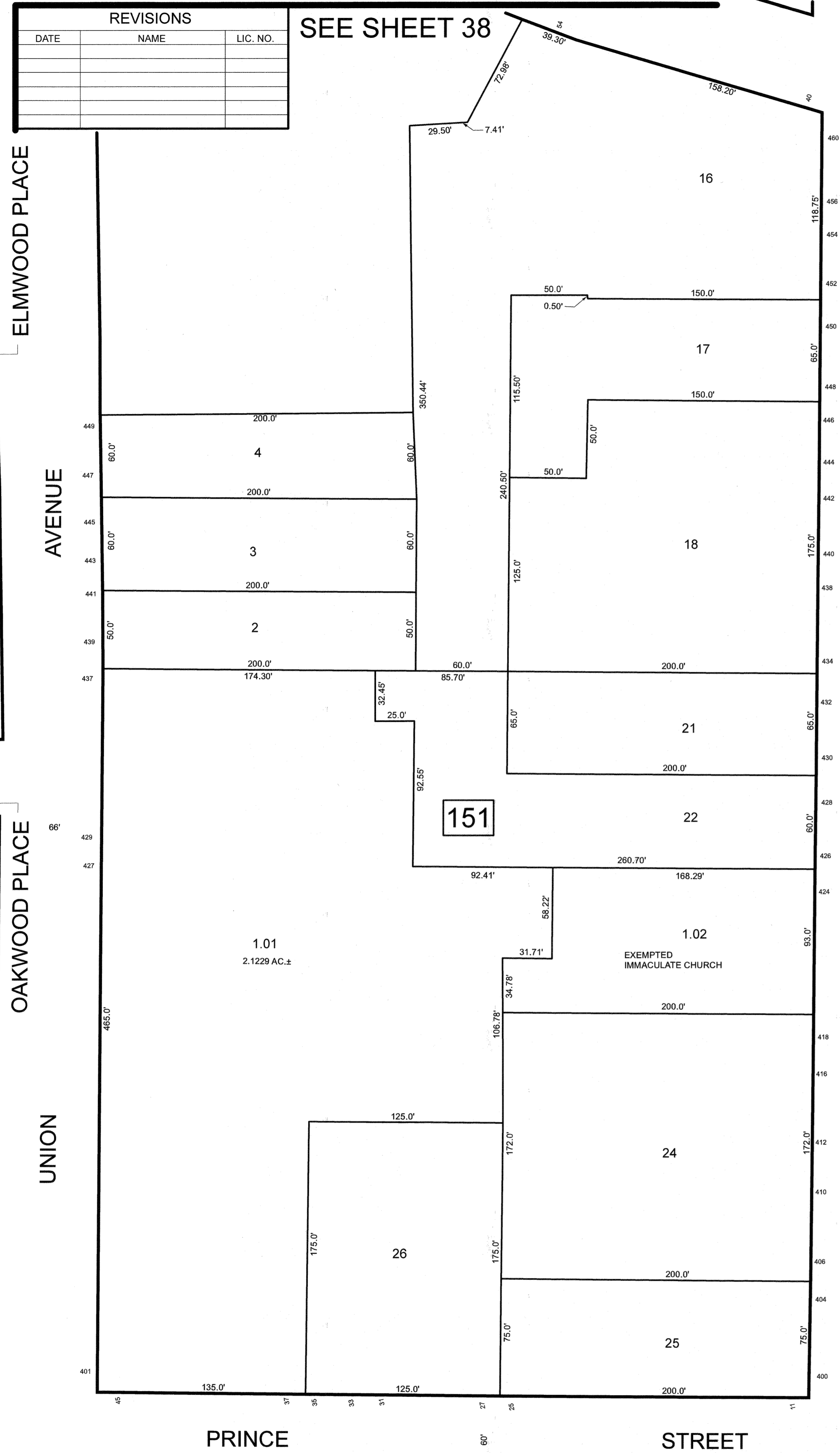
SEE SHEET 57

SEE SHEET 78

SEE SHEET 79

SEE SHEET 38

SEE SHEET 39



NEW JERSEY DEPARTMENT OF THE TREASURY
DIVISION OF TAXATION
APPROVED AS A TAX MAP PURSUANT TO THE AUTHORITY OF
N.J.S.A. 9:25-15 AND N.J.S.A. 9:25-1
FOR THE DIRECTOR, DIVISION OF TAXATION

DATE MAR 31 2022 SERIAL NO. 1129

TAX MAP
CITY OF ELIZABETH
UNION COUNTY NEW JERSEY
SCALE: 1" = 50' FEB. 15, 2019
GLEN J. LLOYD
N.J. PROFESSIONAL LAND SURVEYOR LIC. #GS037598
MASER CONSULTING PA
331 NEWMAN SPRINGS ROAD, SUITE 203
RED BANK, NJ 07701

THIS MAP HAS BEEN DRAWN USING COMPUTER AIDED DRAFTING/DESIGN (CAD/D)