

REVISIONS		
DATE	NAME	LIC. NO.

SEE SHEET 35

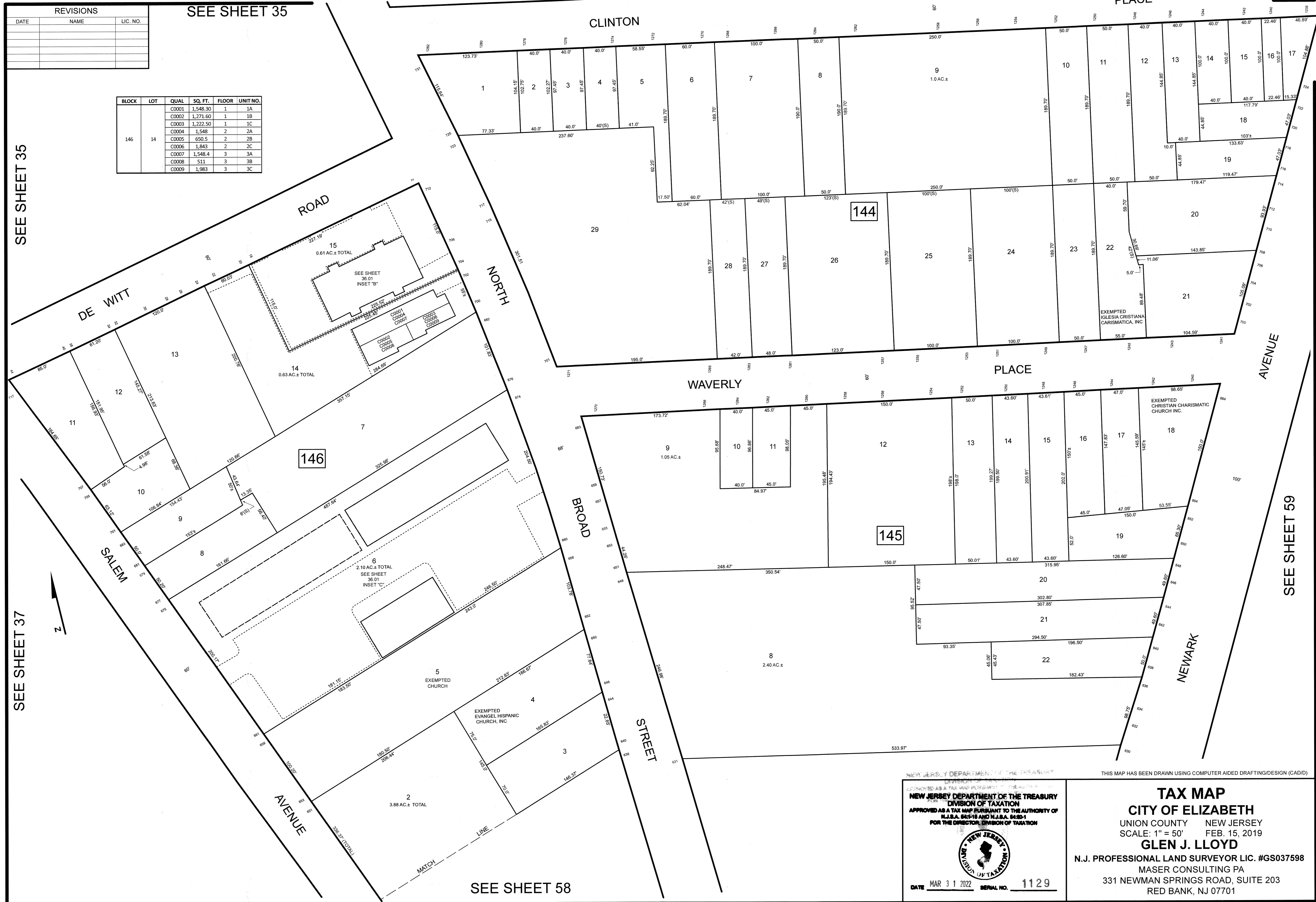
BLOCK	LOT	QUAL	SQ. FT.	FLOOR	UNIT NO.
146	14	C0001	1,548.30	1	1A
		C0002	1,271.60	1	1B
		C0003	1,222.50	1	1C
		C0004	1,548	2	2A
		C0005	650.5	2	2B
		C0006	1,843	2	2C
		C0007	1,548.4	3	3A
		C0008	511	3	3B
		C0009	1,983	3	3C

SEE SHEET 35


SEE SHEET 37

SEE SHEET 58

SEE SHEET 59



NEW JERSEY DEPARTMENT OF THE TREASURY
 DIVISION OF TAXATION
 APPROVED AS A TAX MAP PURSUANT TO THE AUTHORITY OF
 N.J.S.A. 54:1-18 AND N.J.S.A. 54:20-1
 FOR THE DIRECTOR, DIVISION OF TAXATION



DATE MAR 31 2022 SERIAL NO. 1129

THIS MAP HAS BEEN DRAWN USING COMPUTER AIDED DRAFTING/DESIGN (CAD/D)

TAX MAP
CITY OF ELIZABETH
 UNION COUNTY NEW JERSEY
 SCALE: 1" = 50' FEB. 15, 2019
GLEN J. LLOYD
 N.J. PROFESSIONAL LAND SURVEYOR LIC. #GS037598
 MASER CONSULTING PA
 331 NEWMAN SPRINGS ROAD, SUITE 203
 RED BANK, NJ 07701