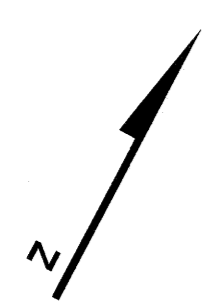


REVISIONS		
DATE	NAME	LIC. NO.



KEMPSHALL PLACE

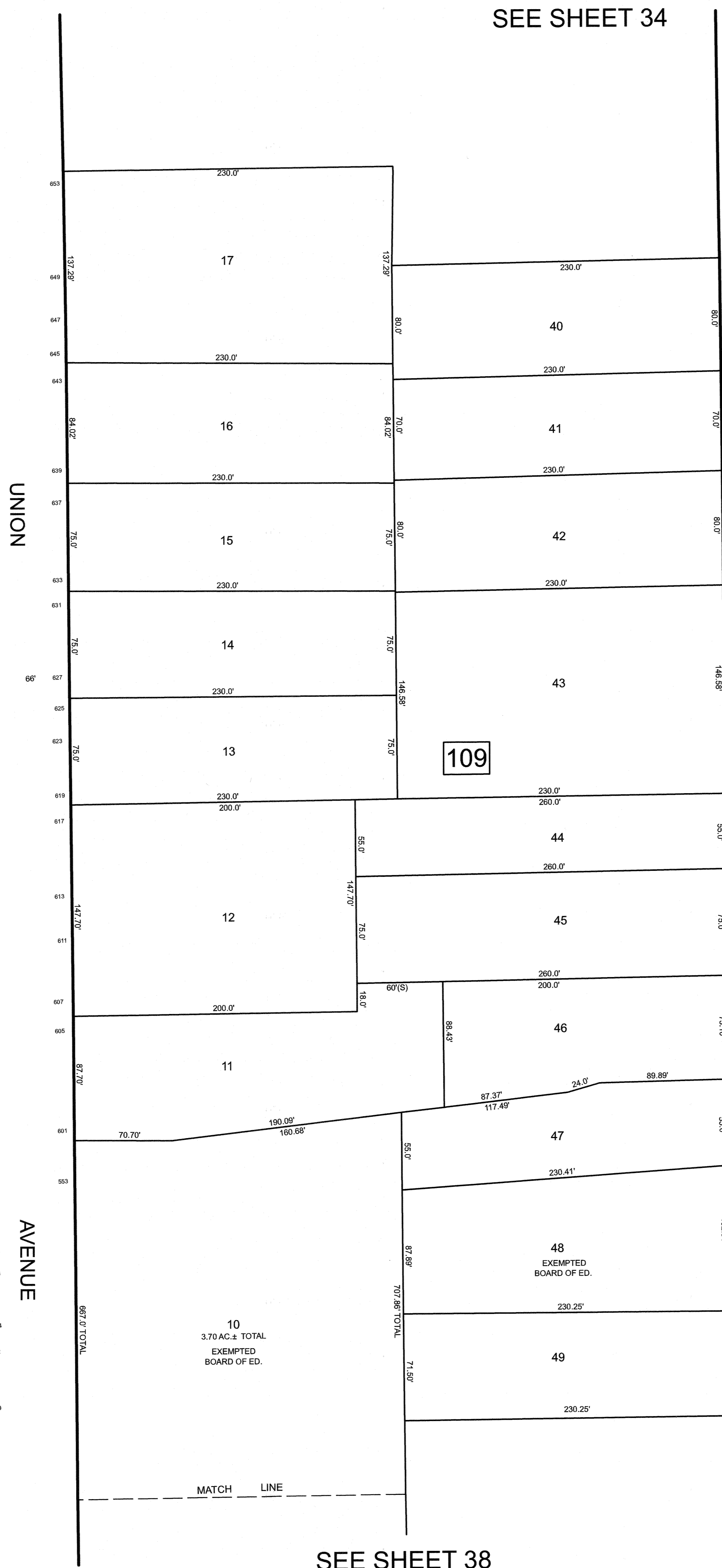
SEE SHEET 33

BARNARD PLACE

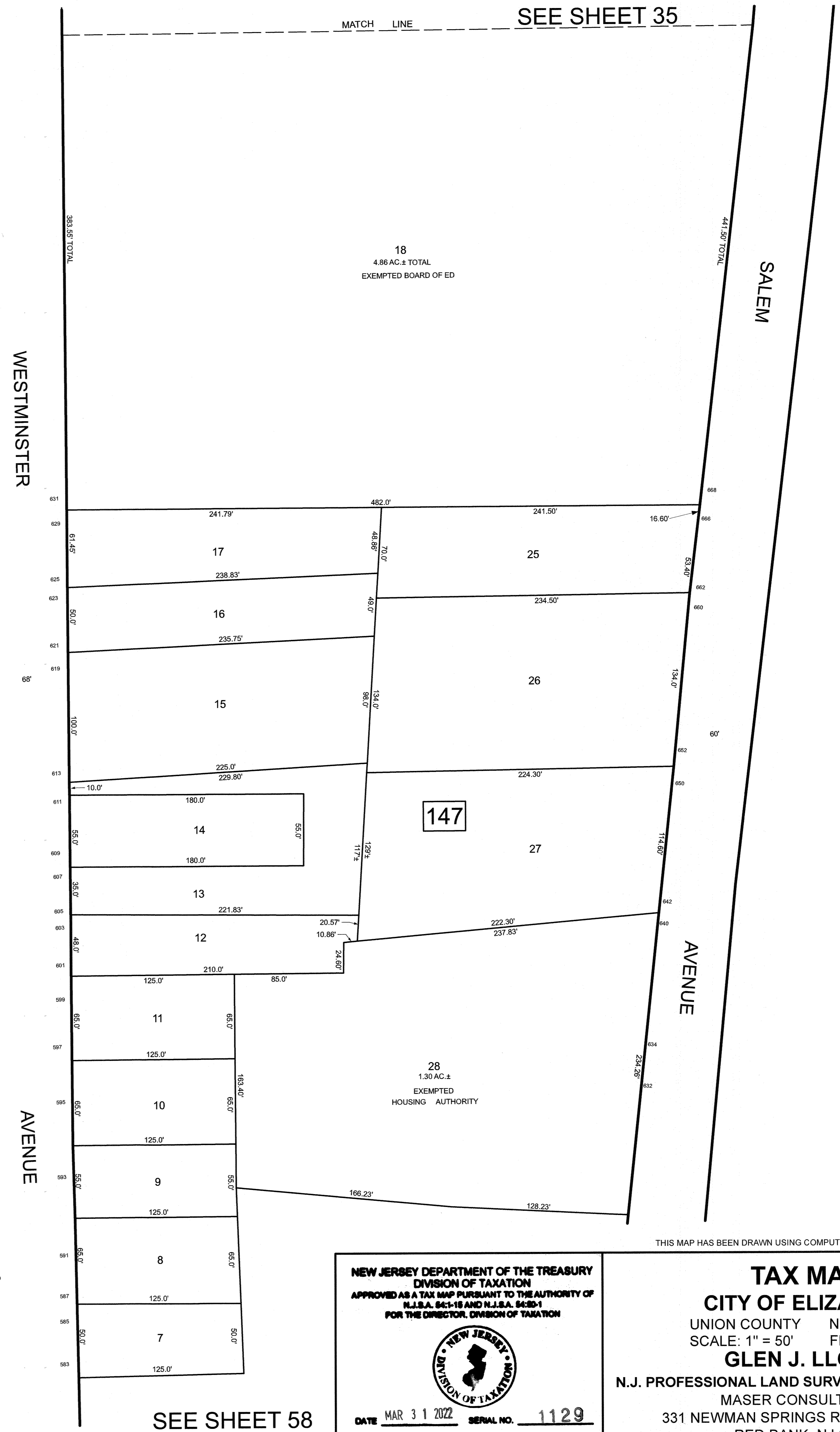
ALGONQUIN PLACE

SEE SHEET 32

SEE SHEET 38



SEE SHEET 38



SEE SHEET 58

NEW JERSEY DEPARTMENT OF THE TREASURY
DIVISION OF TAXATION
APPROVED AS A TAX MAP PURSUANT TO THE AUTHORITY OF
N.J.S.A. 54:1-15 AND N.J.S.A. 54:28-1
FOR THE DIRECTOR, DIVISION OF TAXATION

DATE MAR 31 2022 SERIAL NO. 1129

THIS MAP HAS BEEN DRAWN USING COMPUTER AIDED DRAFTING/DESIGN (CAD/D)

TAX MAP
CITY OF ELIZABETH
UNION COUNTY NEW JERSEY
SCALE: 1" = 50' FEB. 15, 2019
GLEN J. LLOYD
N.J. PROFESSIONAL LAND SURVEYOR LIC. #GS037598
MASER CONSULTING PA
331 NEWMAN SPRINGS ROAD, SUITE 203
RED BANK, NJ 07701

SEE SHEET 36