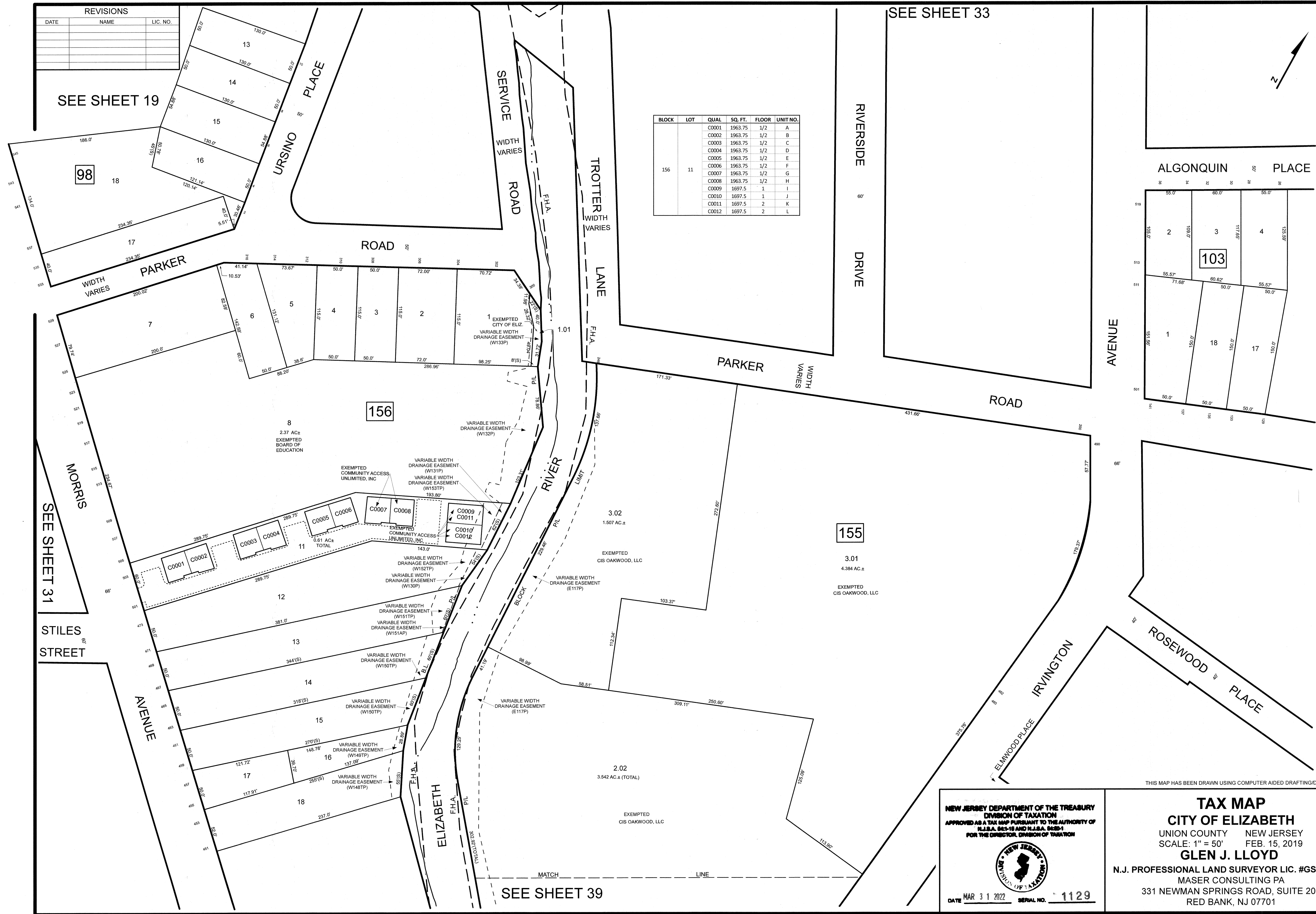


REVISIONS		
DATE	NAME	LIC. NO.



BLOCK	LOT	QUAL	SQ. FT.	FLOOR	UNIT NO.
156	11	C0001	1963.75	1/2	A
		C0002	1963.75	1/2	B
		C0003	1963.75	1/2	C
		C0004	1963.75	1/2	D
		C0005	1963.75	1/2	E
		C0006	1963.75	1/2	F
		C0007	1963.75	1/2	G
		C0008	1963.75	1/2	H
		C0009	1697.5	1	I
		C0010	1697.5	1	J
		C0011	1697.5	2	K
		C0012	1697.5	2	L

SEE SHEET 19

SEE SHEET 33

SEE SHEET 31


SEE SHEET 37

SEE SHEET 38

SEE SHEET 39

THIS MAP HAS BEEN DRAWN USING COMPUTER AIDED DRAFTING/DESIGN (CAD/D)

NEW JERSEY DEPARTMENT OF THE TREASURY
 DIVISION OF TAXATION
 APPROVED AS A TAX MAP PURSUANT TO THE AUTHORITY OF
 N.J.S.A. 52:15 AND N.J.S.A. 52:21
 FOR THE DIRECTOR, DIVISION OF TAXATION



DATE MAR 31 2022 SERIAL NO. 1129

TAX MAP
CITY OF ELIZABETH
 UNION COUNTY NEW JERSEY
 SCALE: 1" = 50' FEB. 15, 2019
GLEN J. LLOYD
 N.J. PROFESSIONAL LAND SURVEYOR LIC. #GS037598
 MASER CONSULTING PA
 331 NEWMAN SPRINGS ROAD, SUITE 203
 RED BANK, NJ 07701