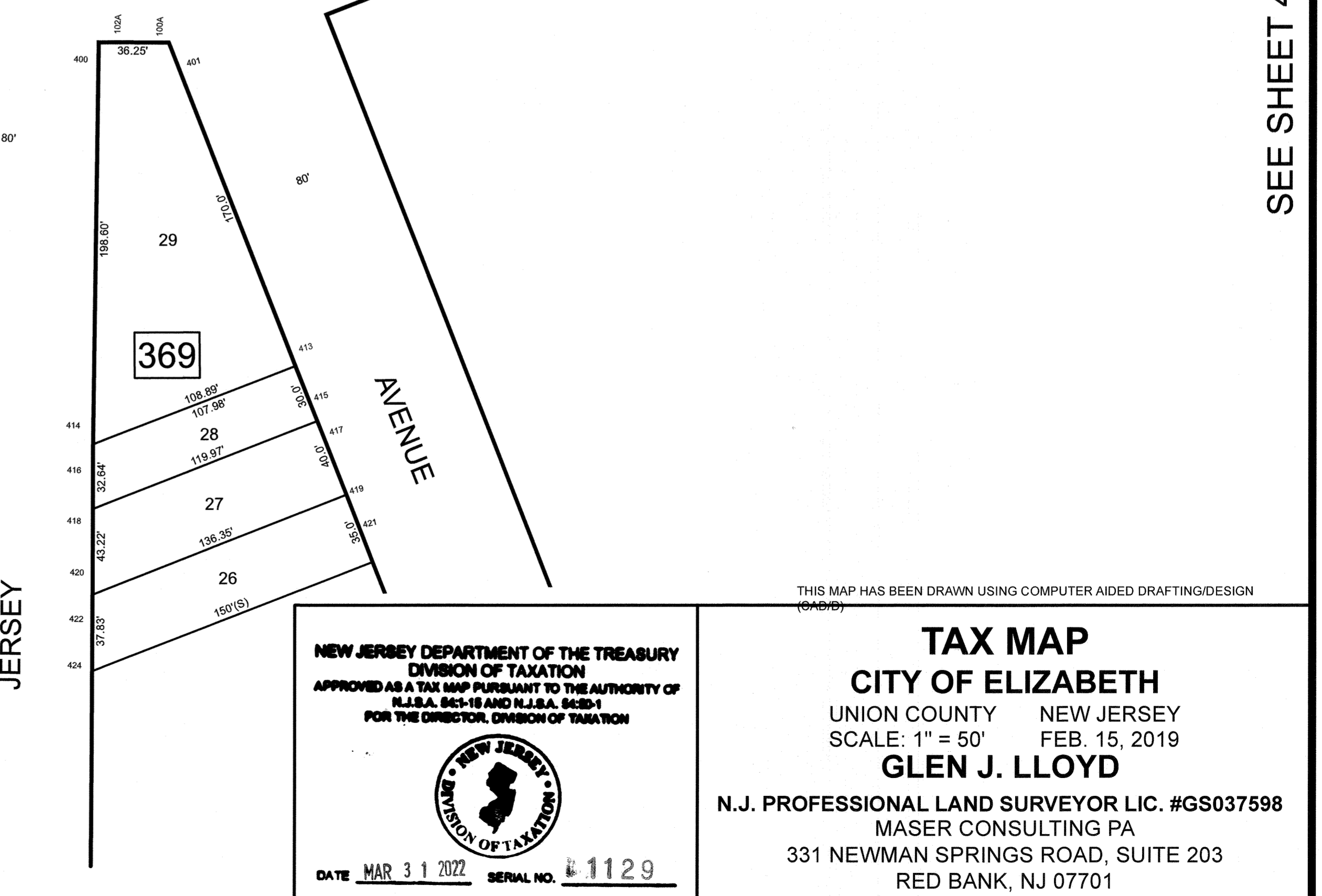
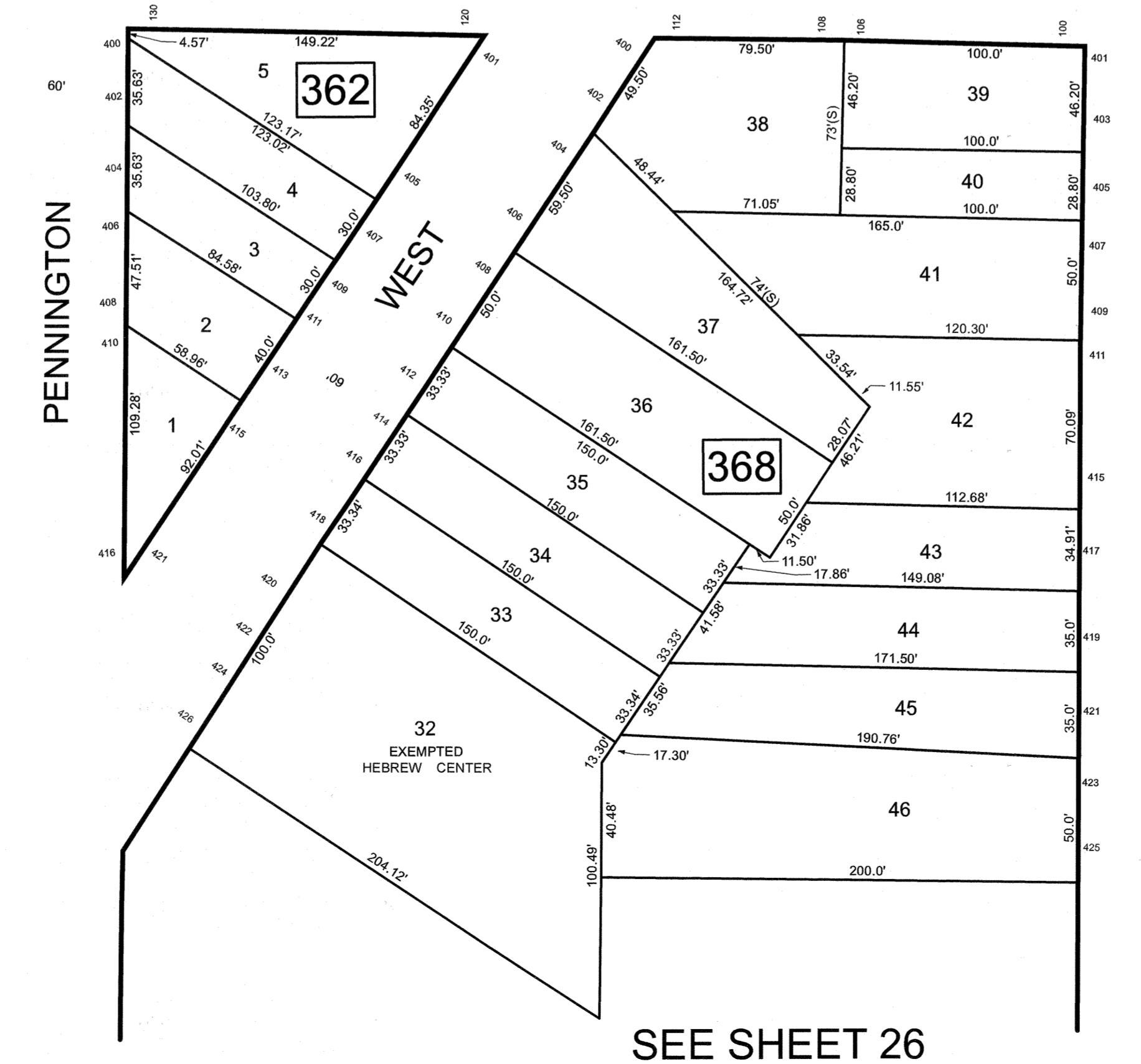
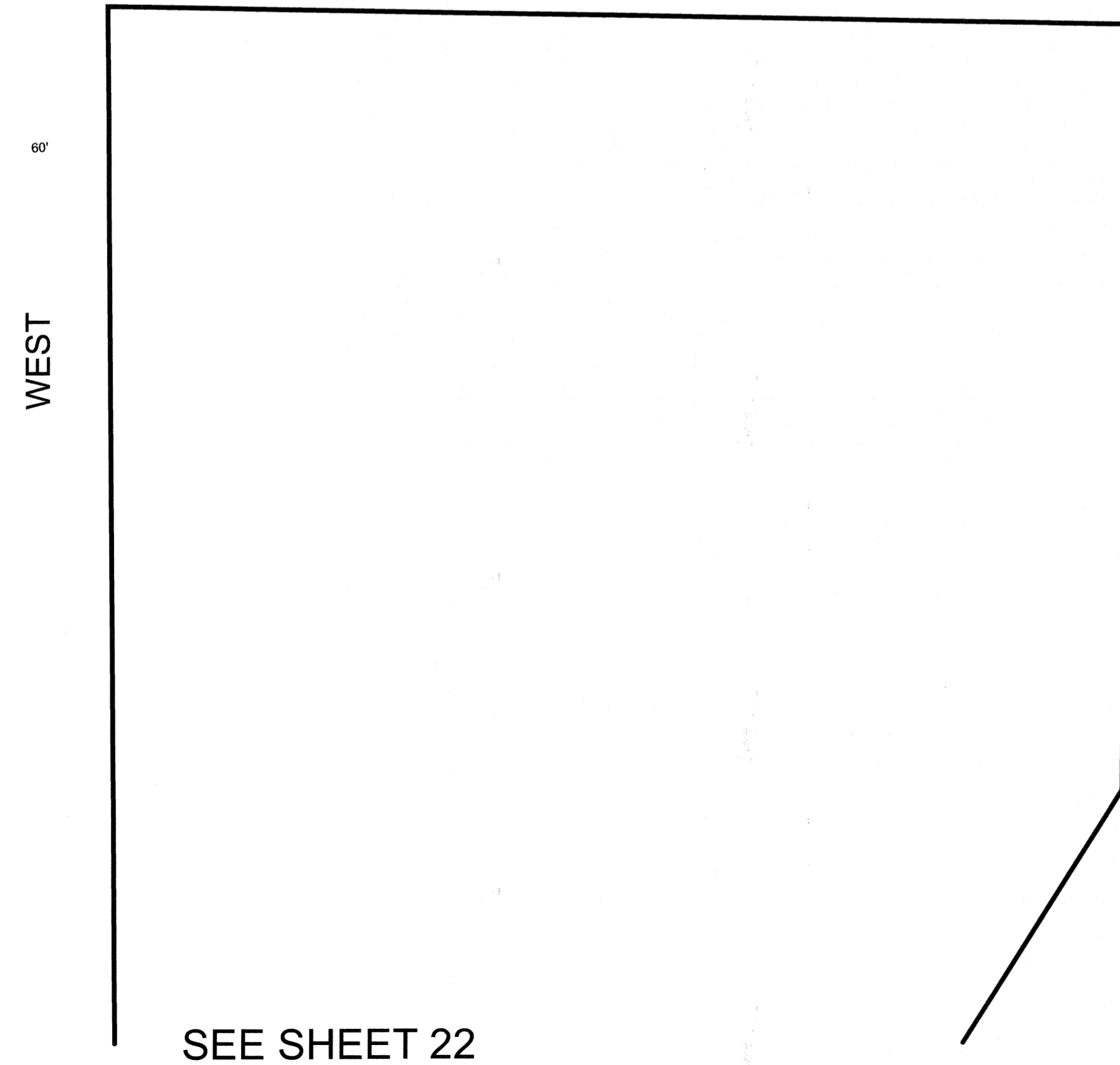
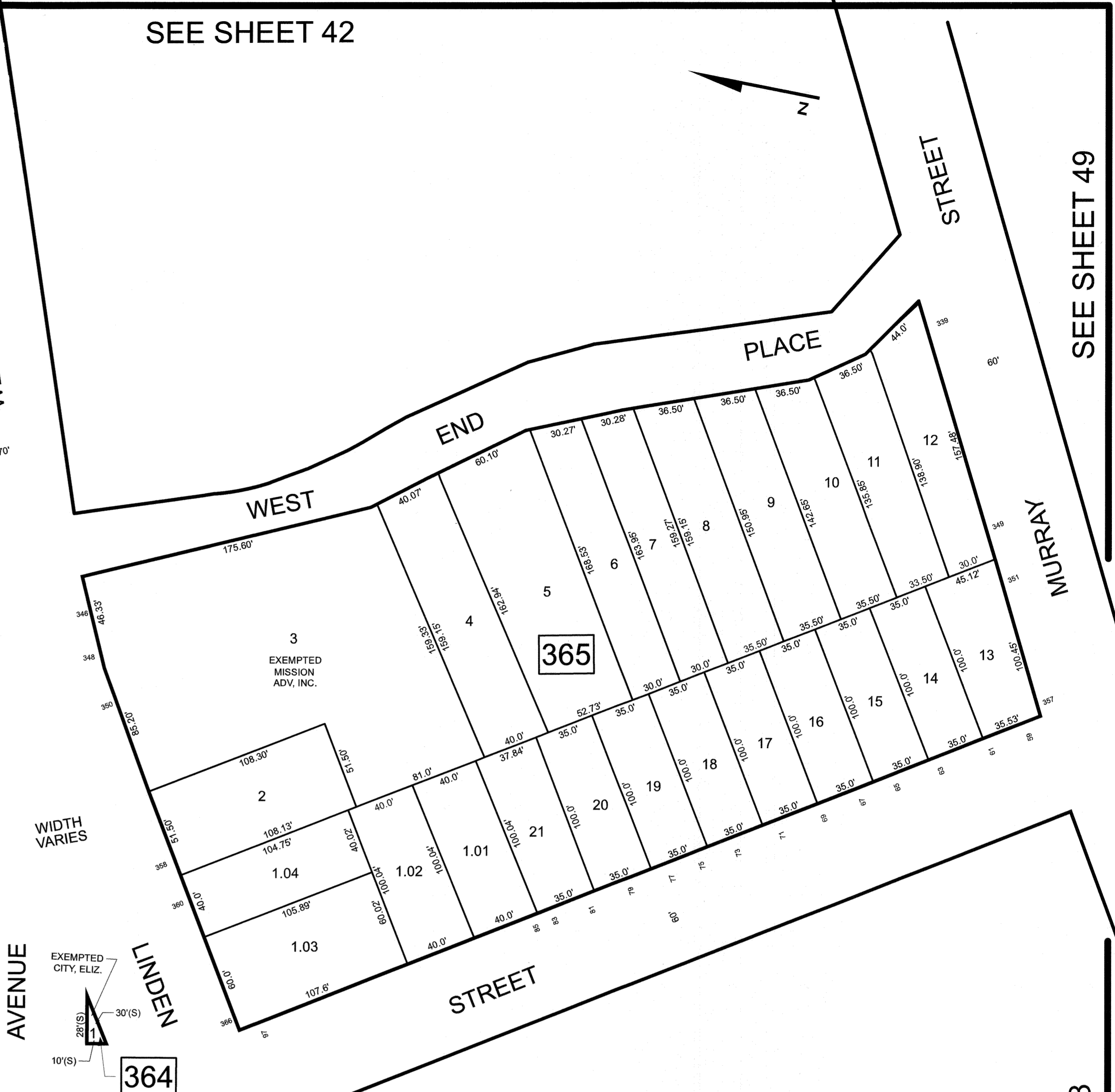
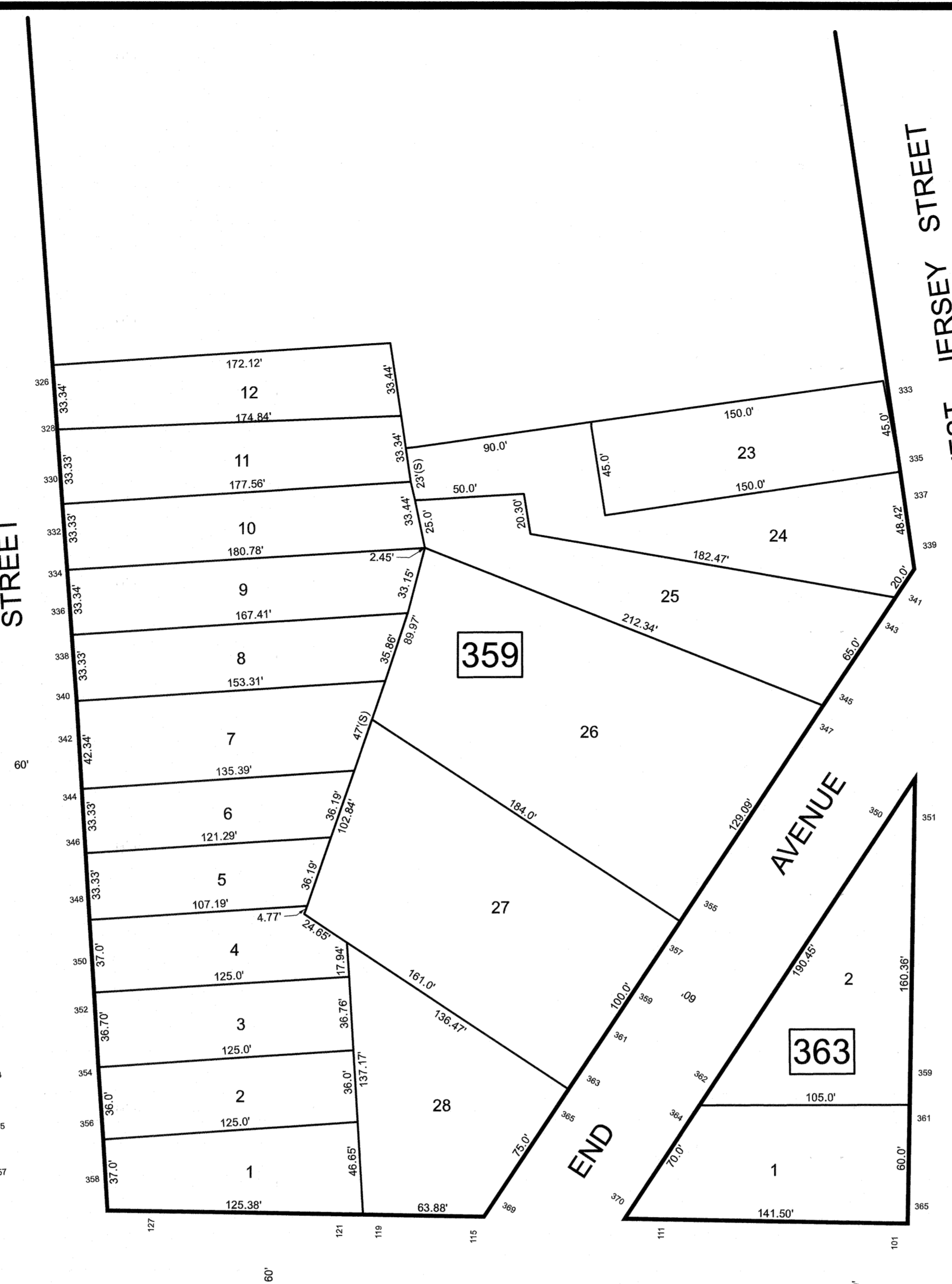
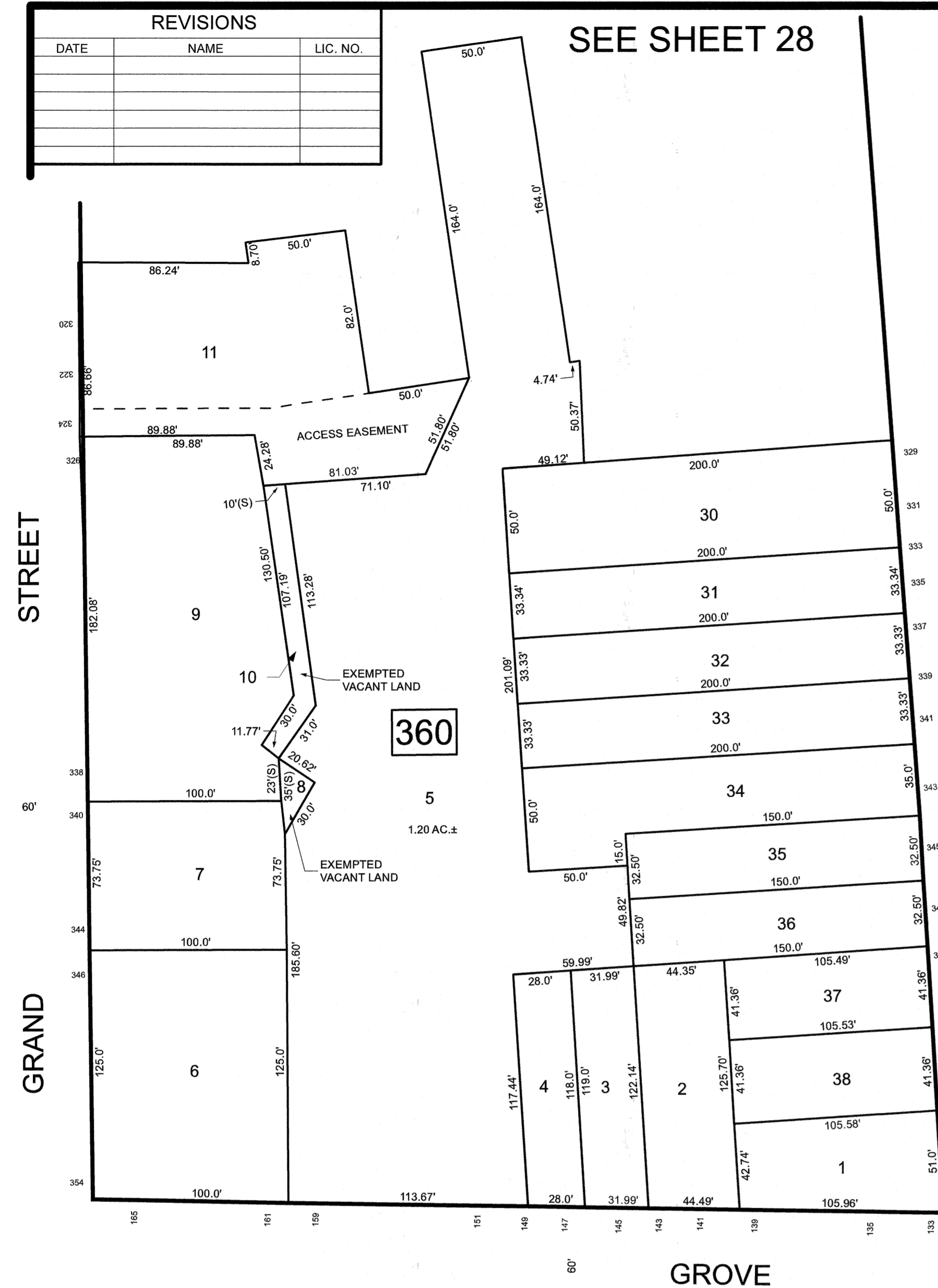


REVISIONS		
DATE	NAME	LIC. NO.



SEE SHEET 22

SEE SHEET 42

SEE SHEET 49

SEE SHEET 22

SEE SHEET 26

SEE SHEET 43

NEW JERSEY DEPARTMENT OF THE TREASURY  
 DIVISION OF TAXATION  
 APPROVED AS A TAX MAP PURSUANT TO THE AUTHORITY OF  
 N.J.S.A. 84C-18 AND N.J.S.A. 84C-21  
 FOR THE DIRECTOR, DIVISION OF TAXATION

DATE MAR 3 1 2022 SERIAL NO. 1129

THIS MAP HAS BEEN DRAWN USING COMPUTER AIDED DRAFTING/DESIGN (CAD)

**TAX MAP**  
**CITY OF ELIZABETH**  
 UNION COUNTY NEW JERSEY  
 SCALE: 1" = 50' FEB. 15, 2019  
**GLEN J. LLOYD**  
 N.J. PROFESSIONAL LAND SURVEYOR LIC. #GS037598  
 MASER CONSULTING PA  
 331 NEWMAN SPRINGS ROAD, SUITE 203  
 RED BANK, NJ 07701