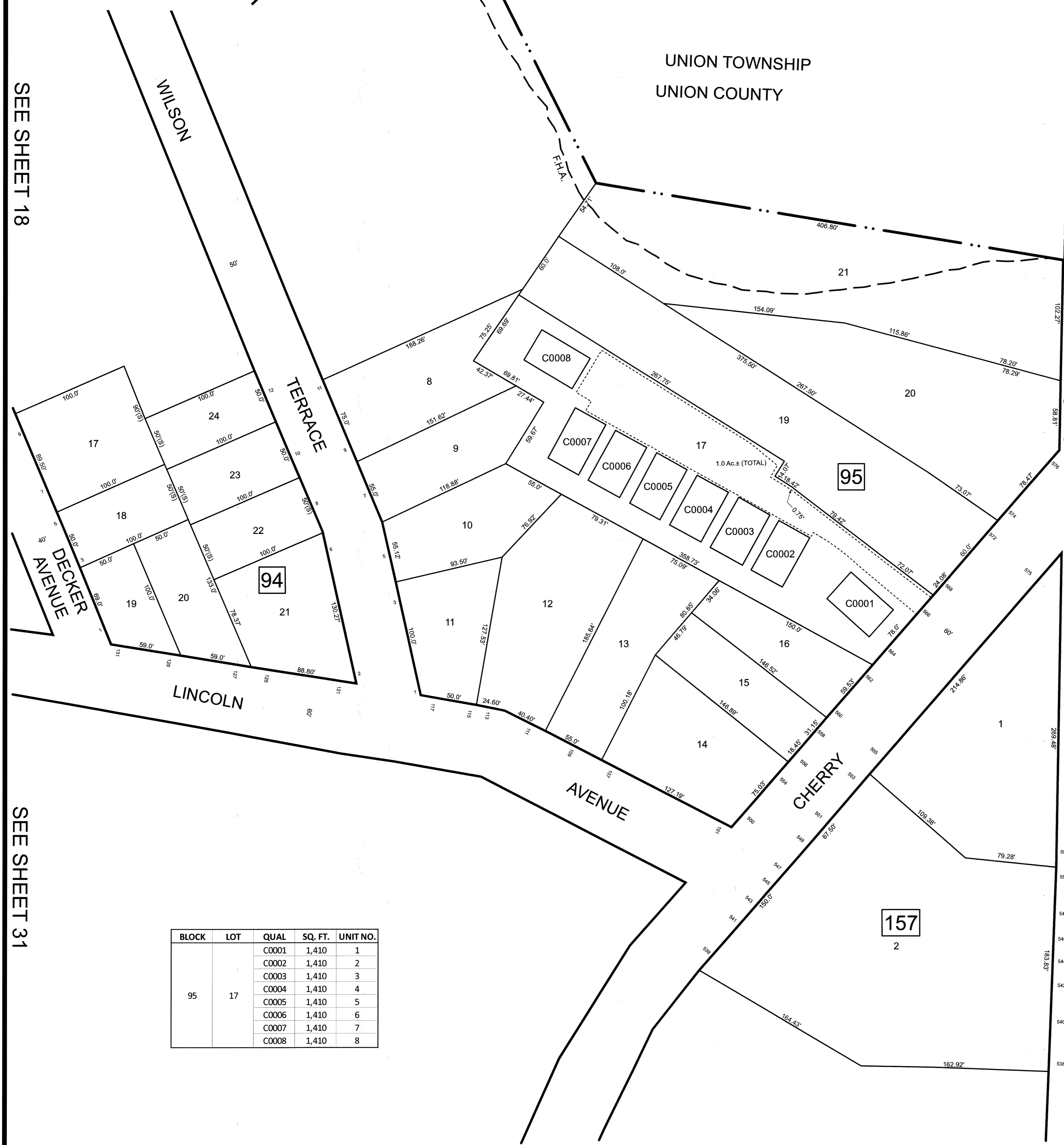
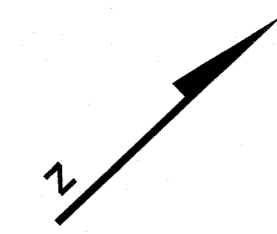


REVISIONS		
DATE	NAME	LIC. NO.

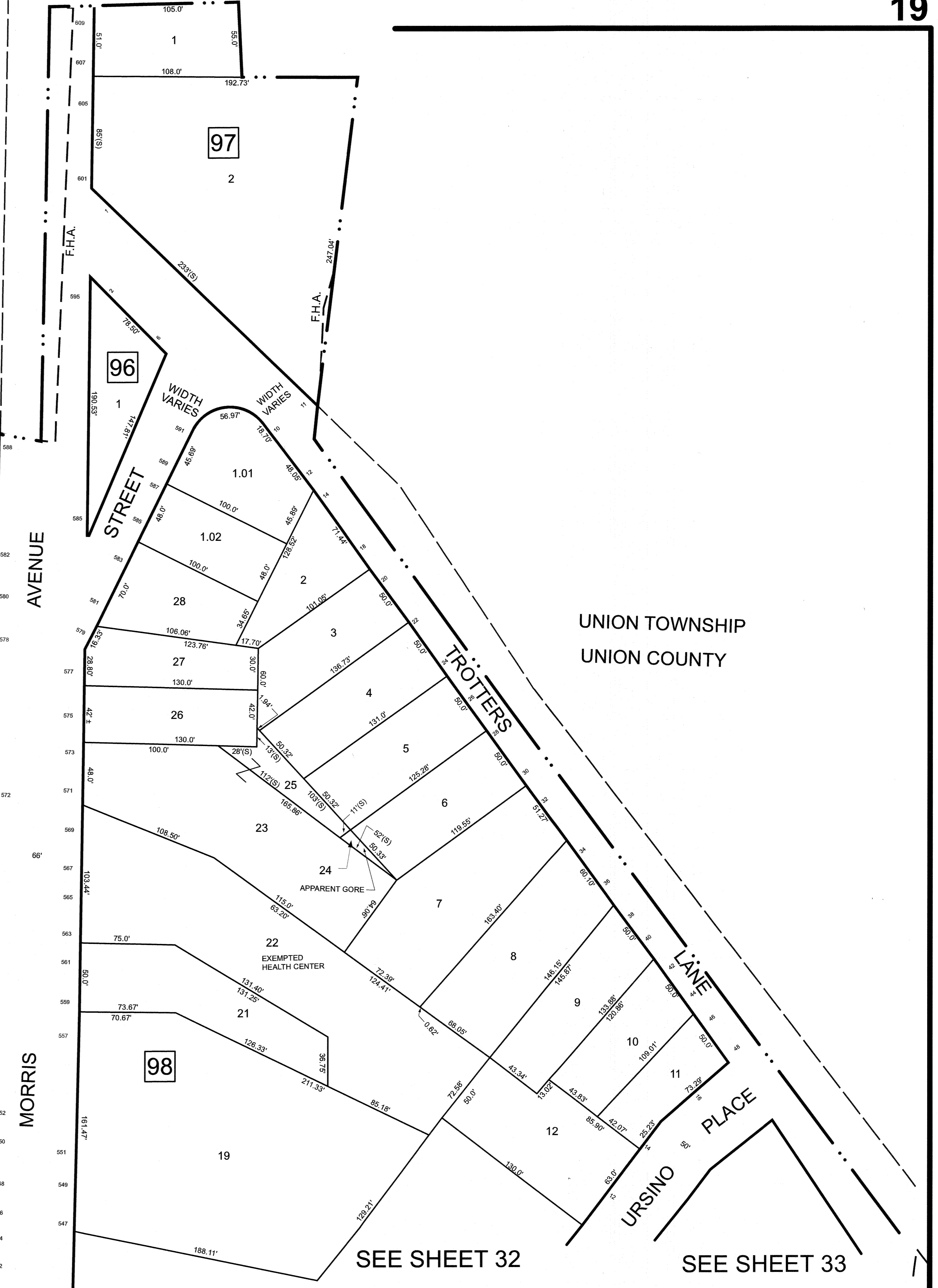


BLOCK	LOT	QUAL	SQ. FT.	UNIT NO.
95	17	C0001	1,410	1
		C0002	1,410	2
		C0003	1,410	3
		C0004	1,410	4
		C0005	1,410	5
		C0006	1,410	6
		C0007	1,410	7
		C0008	1,410	8

SEE SHEET 18

SEE SHEET 31

SEE SHEET 31



SEE SHEET 32

SEE SHEET 33

NEW JERSEY DEPARTMENT OF THE TREASURY
 DIVISION OF TAXATION
 APPROVED AS A TAX MAP PURSUANT TO THE AUTHORITY OF
 N.J.S.A. 84:1-18 AND N.J.S.A. 84:2-1
 FOR THE DIRECTOR, DIVISION OF TAXATION



DATE MAR 31 2022 SERIAL NO. 1129

THIS MAP HAS BEEN DRAWN USING COMPUTER AIDED DRAFTING/DESIGN (CAD/D)

TAX MAP
CITY OF ELIZABETH
 UNION COUNTY NEW JERSEY
 SCALE: 1" = 50' FEB. 15, 2019
GLEN J. LLOYD
 N.J. PROFESSIONAL LAND SURVEYOR LIC. #GS037598
 MASER CONSULTING PA
 331 NEWMAN SPRINGS ROAD, SUITE 203
 RED BANK, NJ 07701