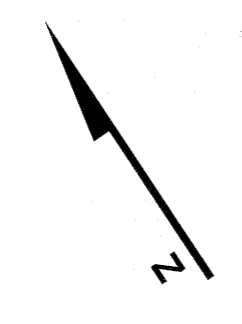


REVISIONS		
DATE	NAME	LIC. NO.

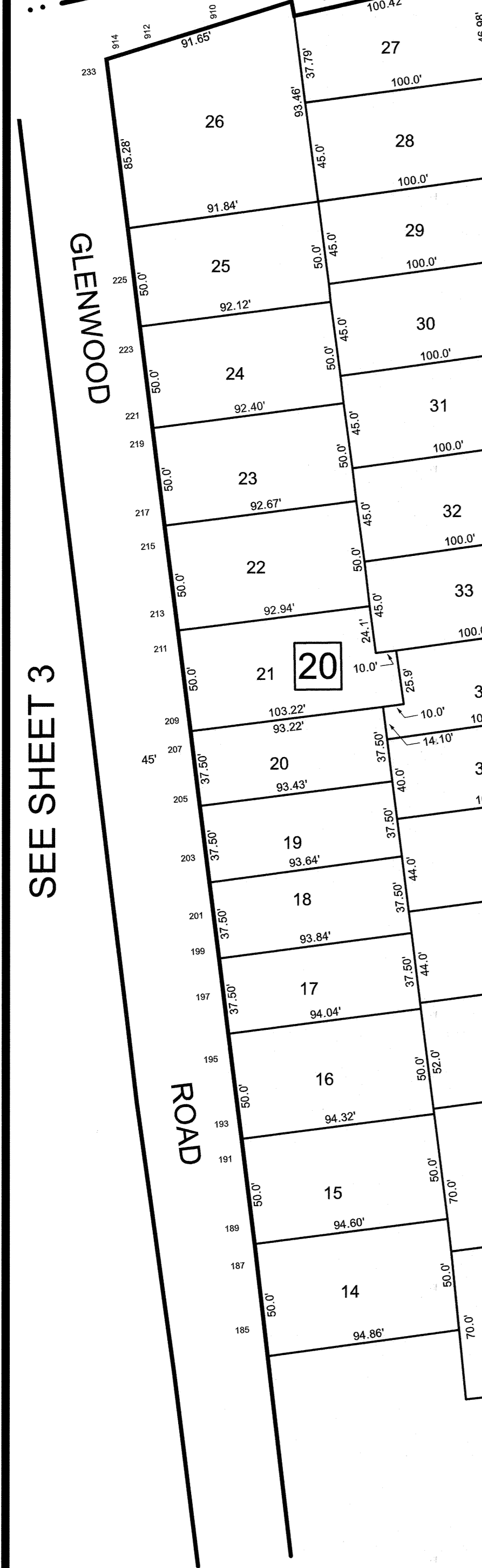
UNION TOWNSHIP
UNION COUNTY



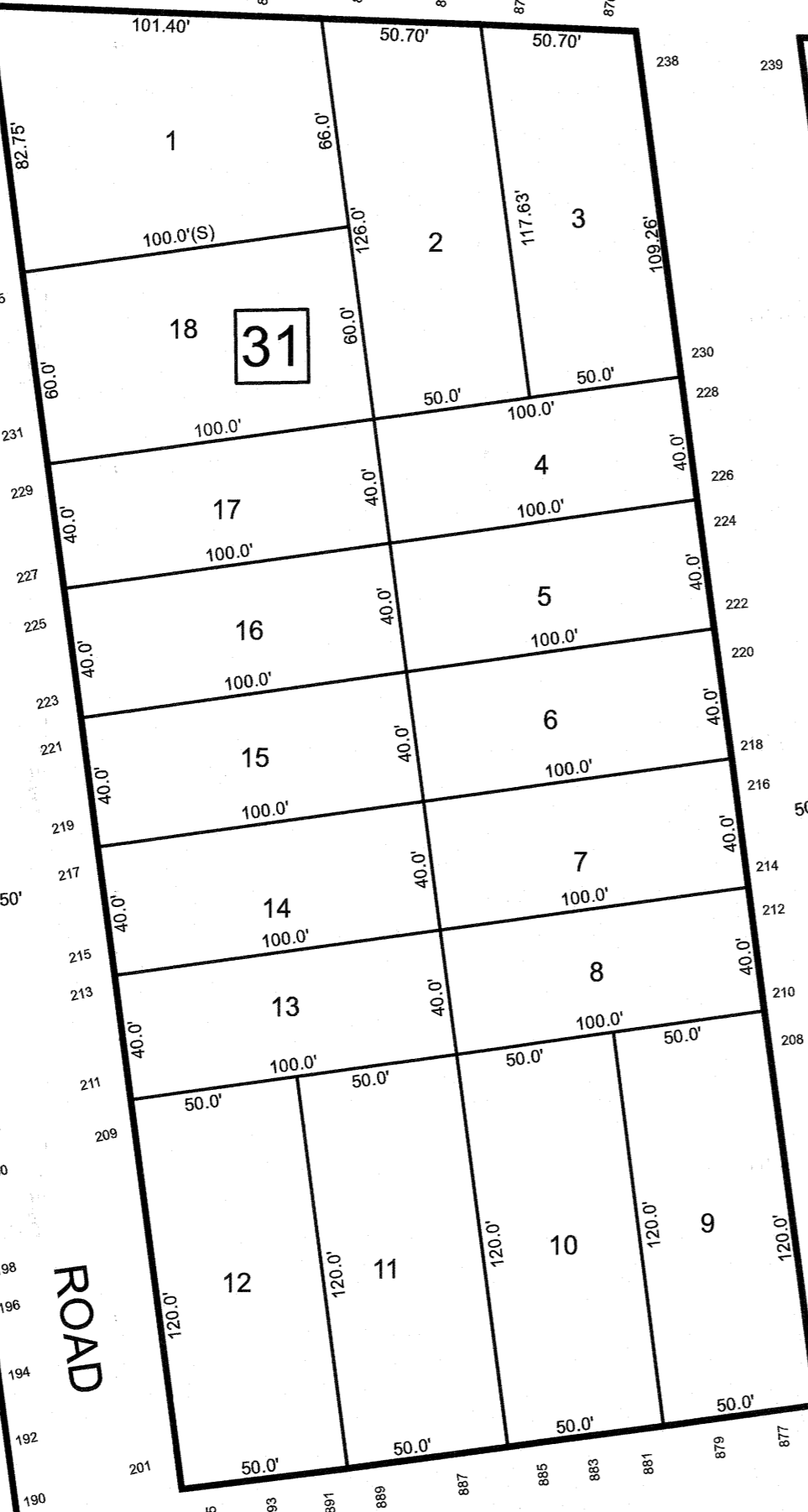
SEE SHEET 8

MAGIE AVENUE

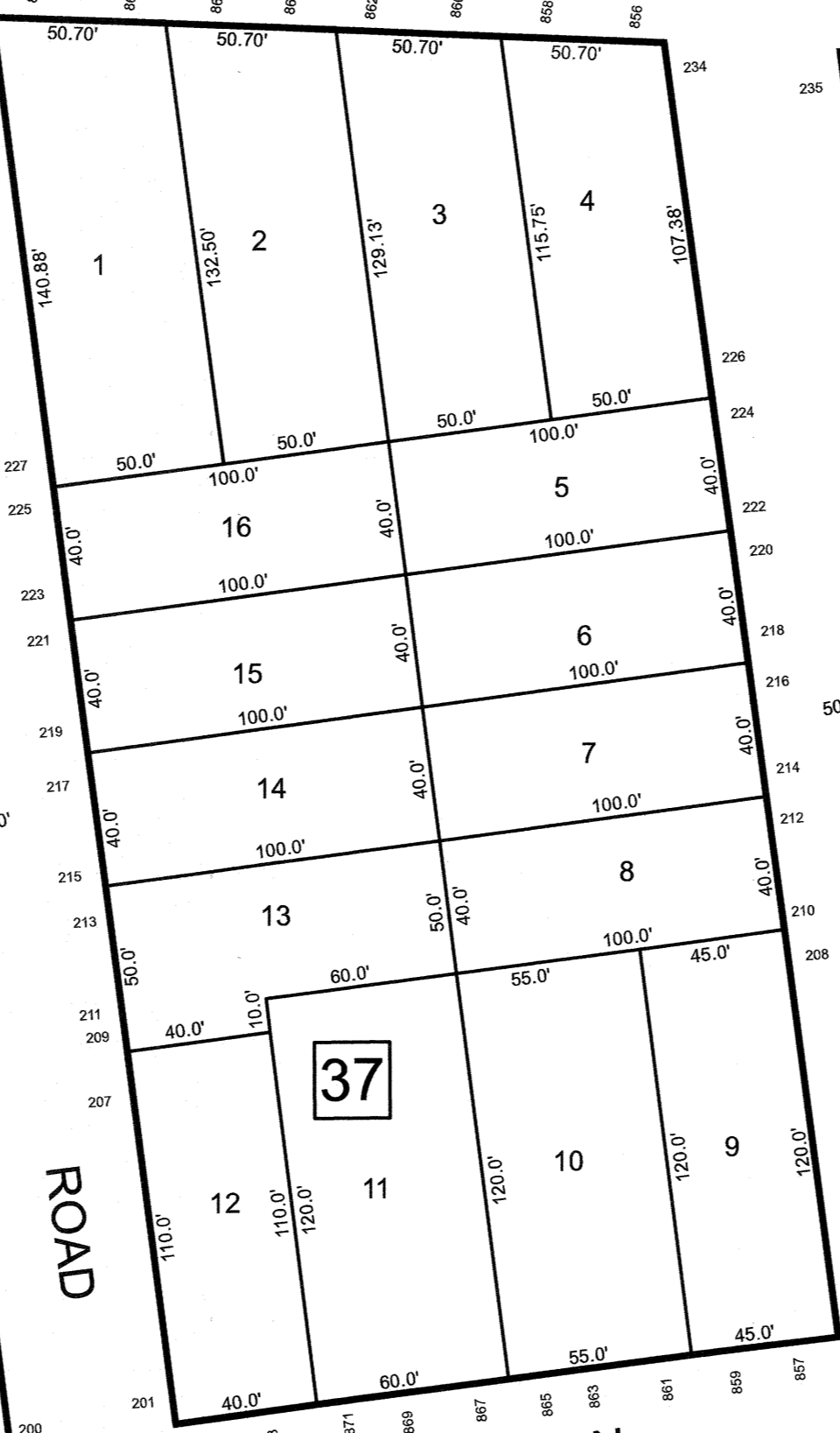
WIDTH VARIES



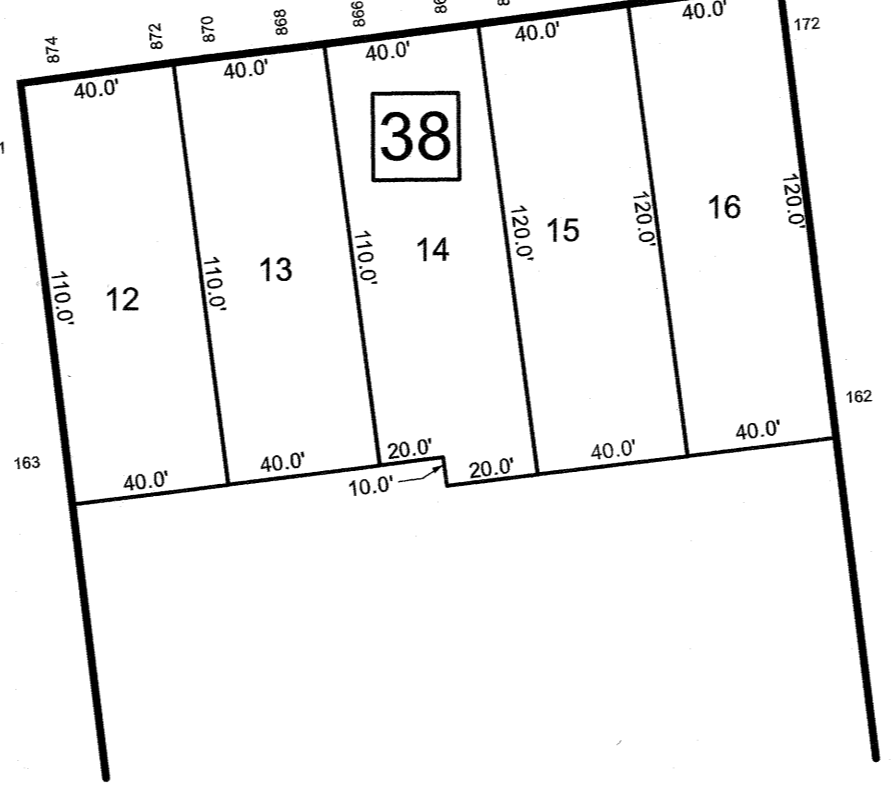
SUMMIT



WYOMING



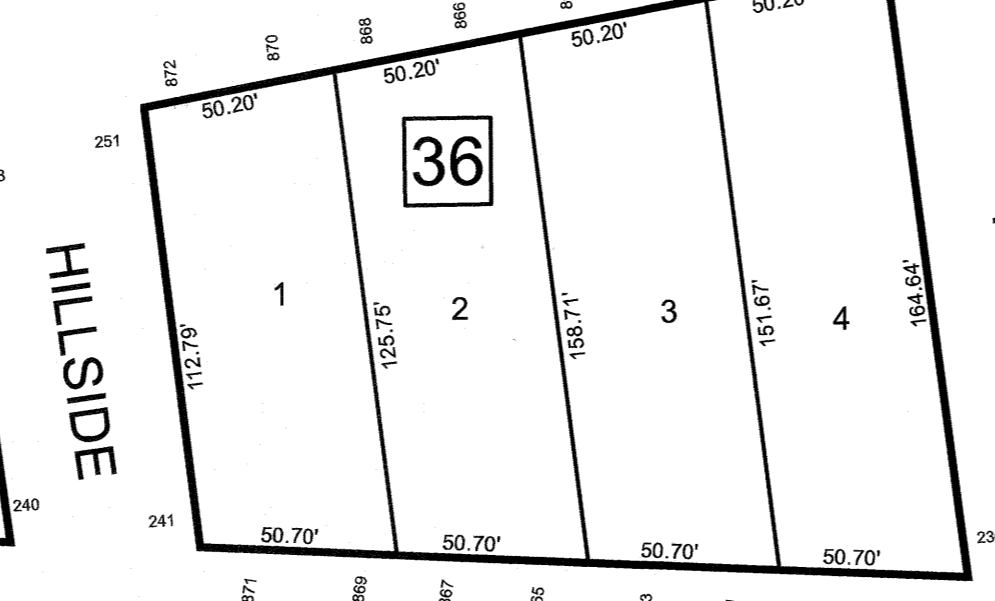
LIVINGSTON



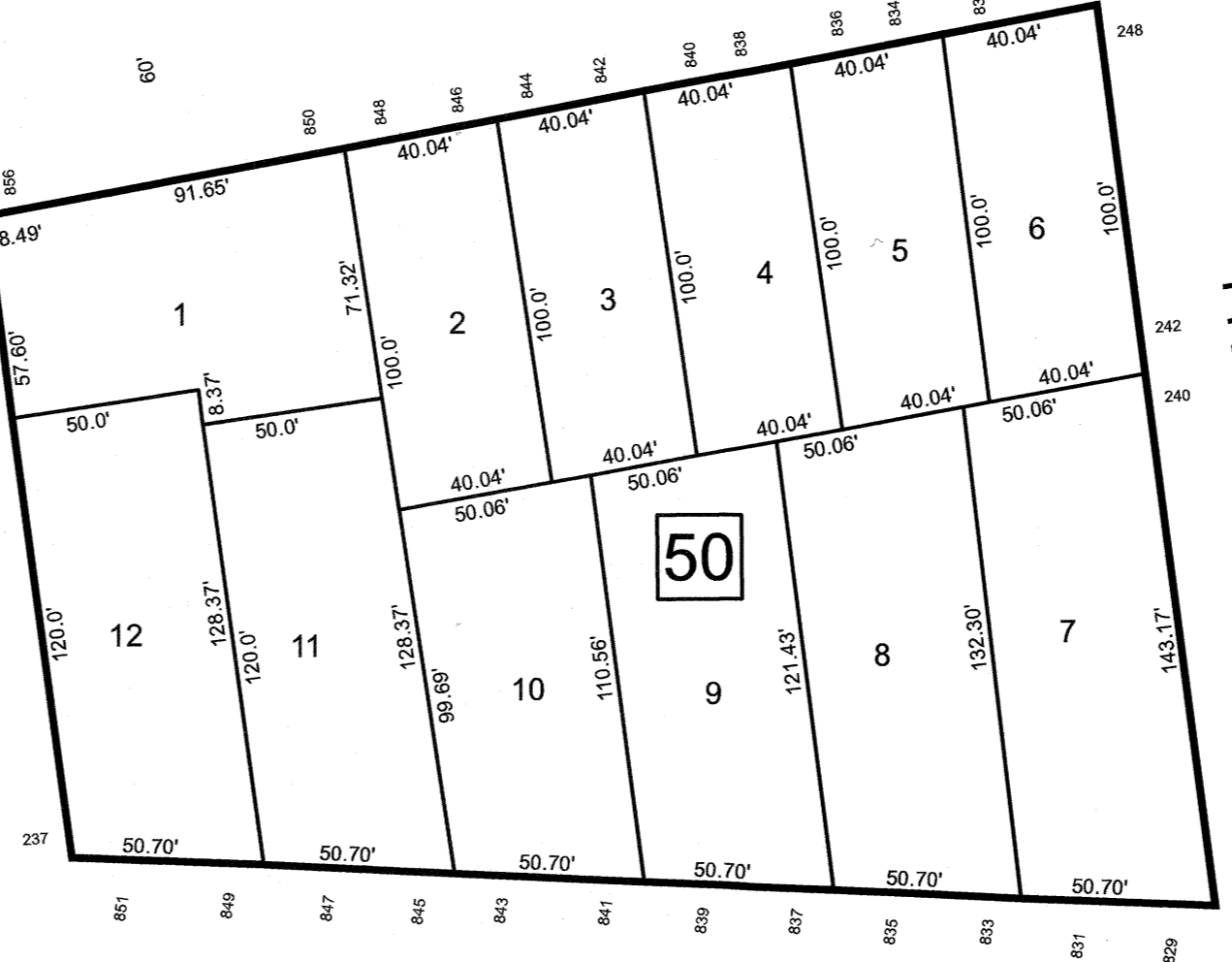
SEE SHEET 6

SEE SHEET 12

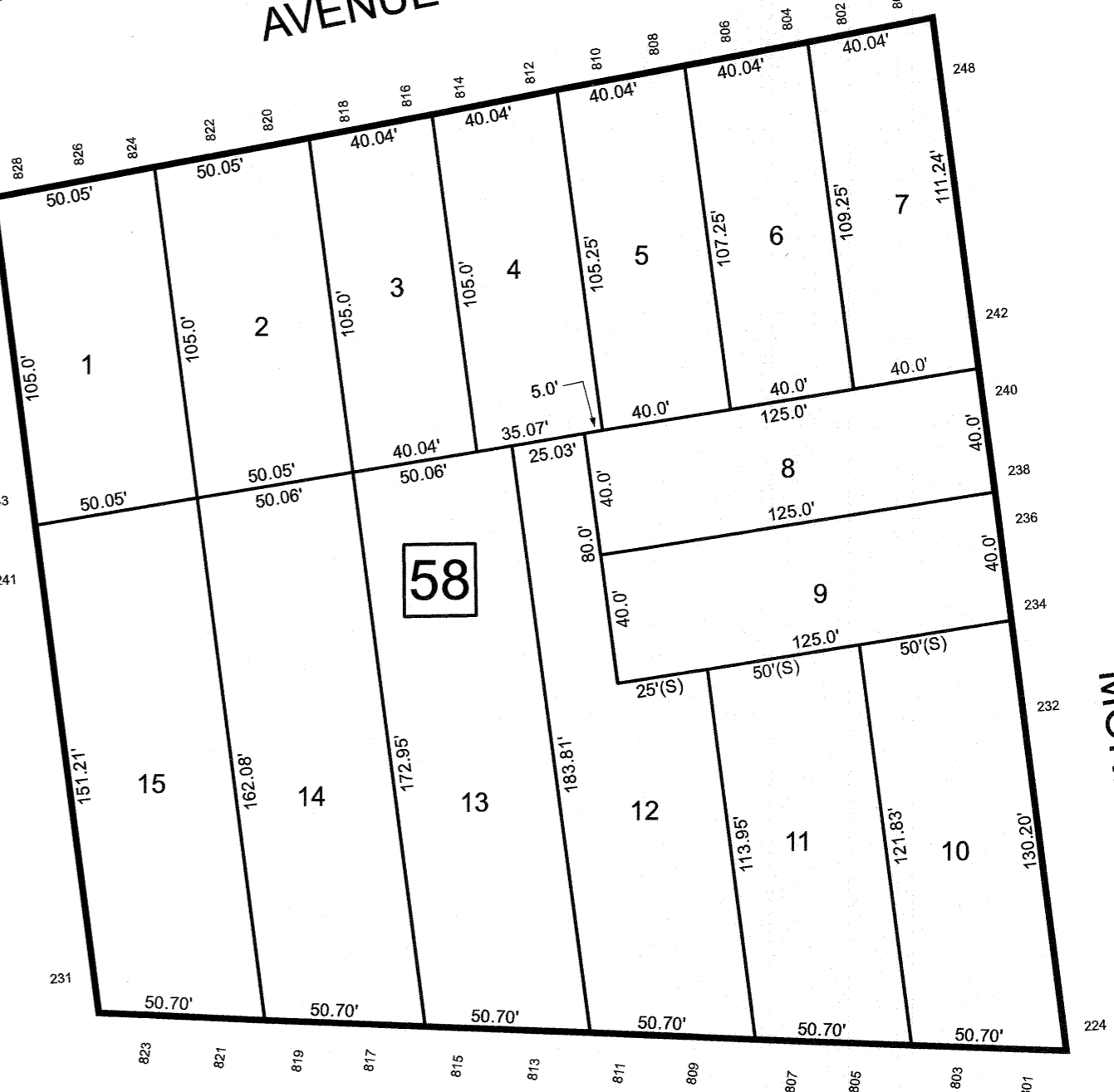
MAGIE



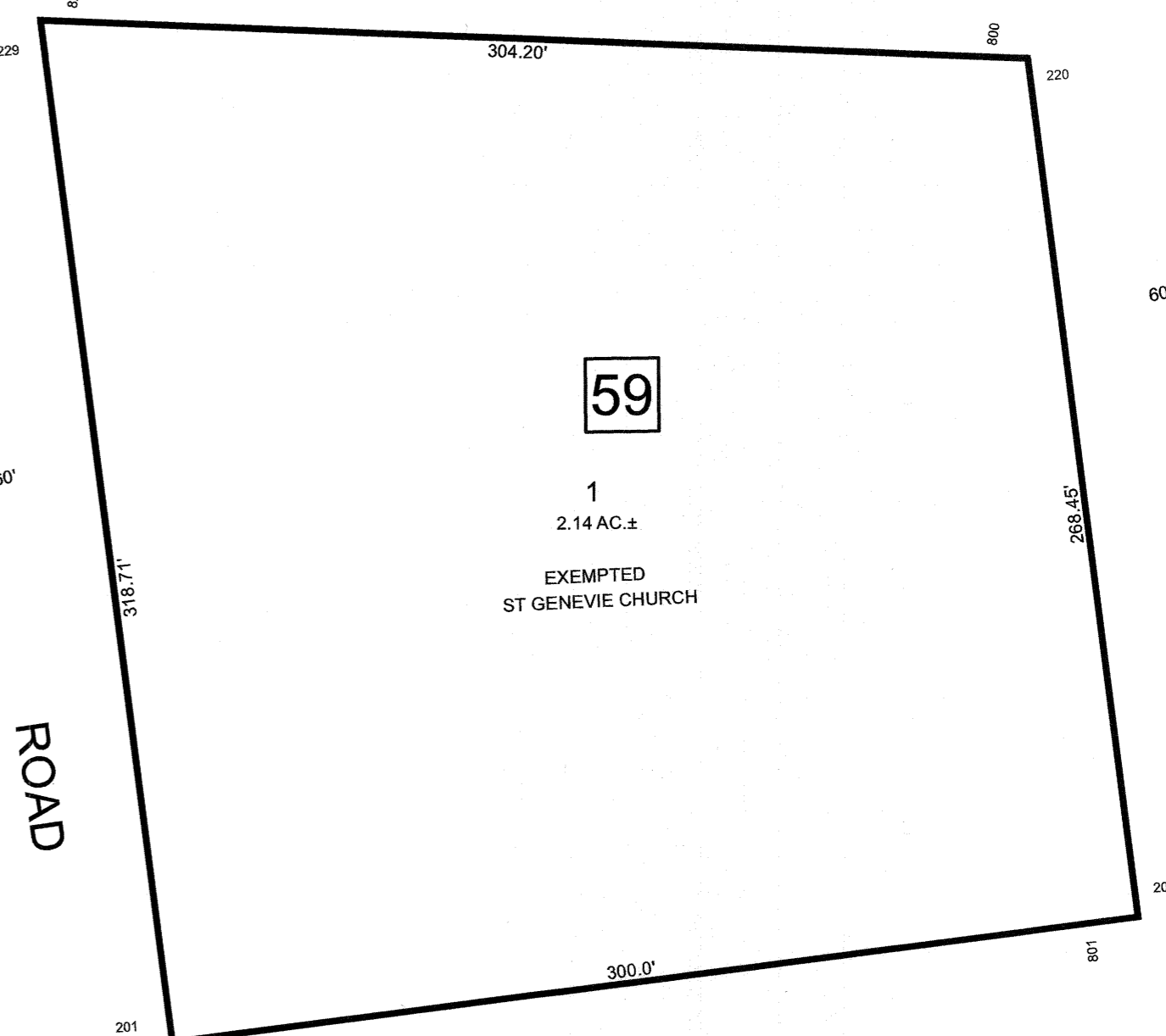
PALISADE



PRINCETON



AVENUE



ROAD

SEE SHEET 11

THIS MAP HAS BEEN DRAWN USING COMPUTER AIDED DRAFTING/DESIGN (CAD/D)

NEW JERSEY DEPARTMENT OF THE TREASURY
DIVISION OF TAXATION
APPROVED AS A TAX MAP PURSUANT TO THE AUTHORITY OF
N.J.S.A. 54:1-15 AND N.J.S.A. 54:23-1
FOR THE DIRECTOR, DIVISION OF TAXATION



DATE MAR 31 2022 SERIAL NO. 1129

TAX MAP
CITY OF ELIZABETH
UNION COUNTY NEW JERSEY
SCALE: 1" = 50' FEB. 15, 2019
GLEN J. LLOYD

N.J. PROFESSIONAL LAND SURVEYOR LIC. #GS037598
MASER CONSULTING PA
331 NEWMAN SPRINGS ROAD, SUITE 203
RED BANK, NJ 07701