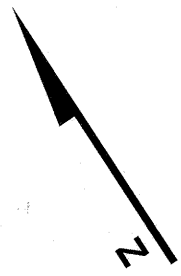
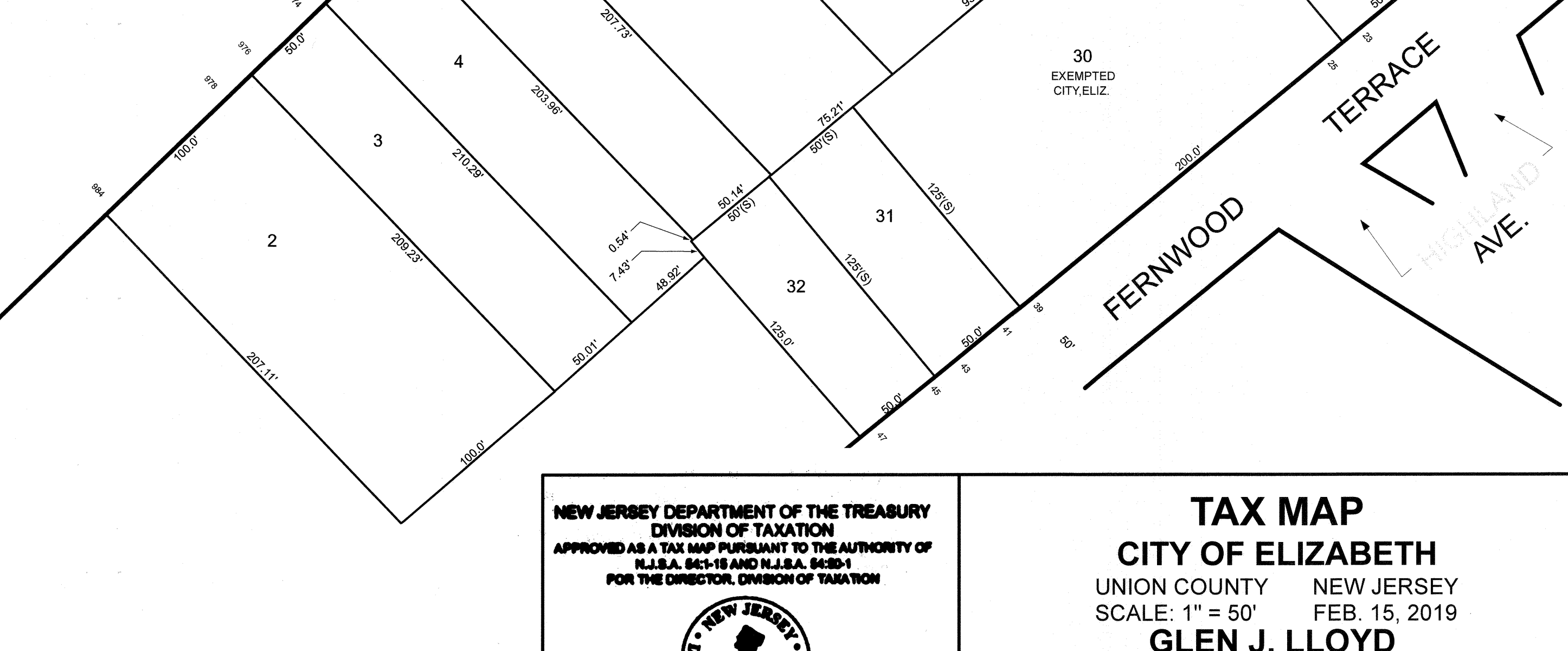
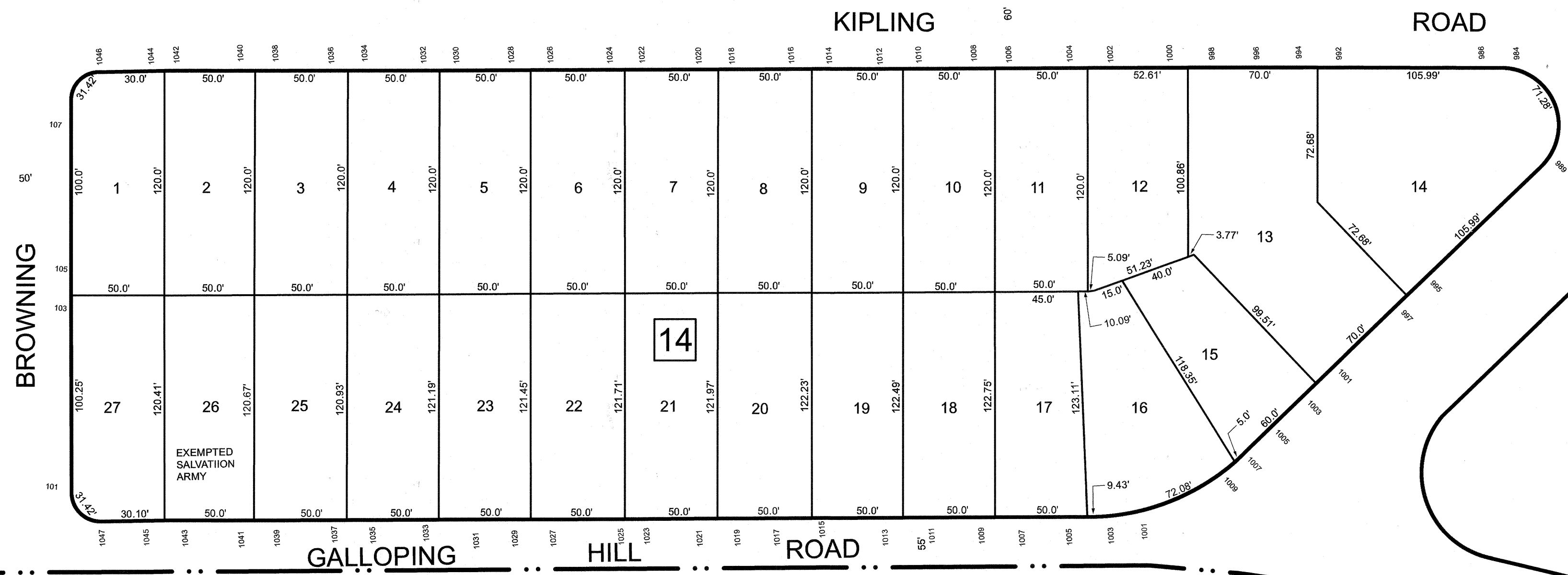
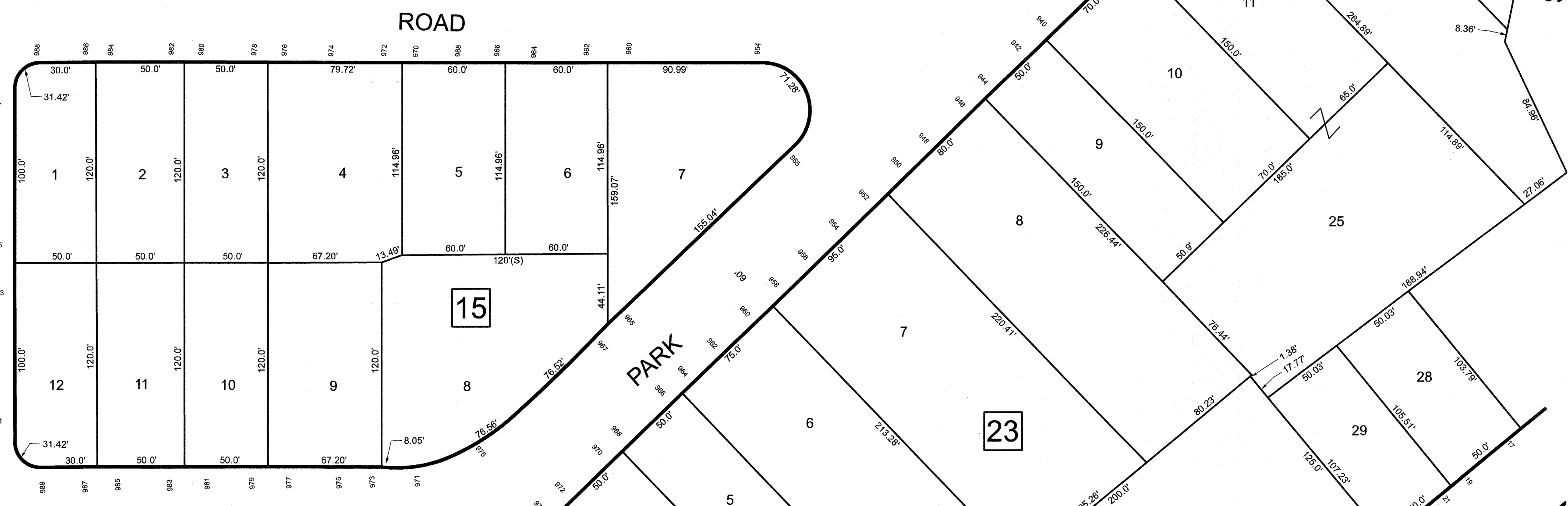
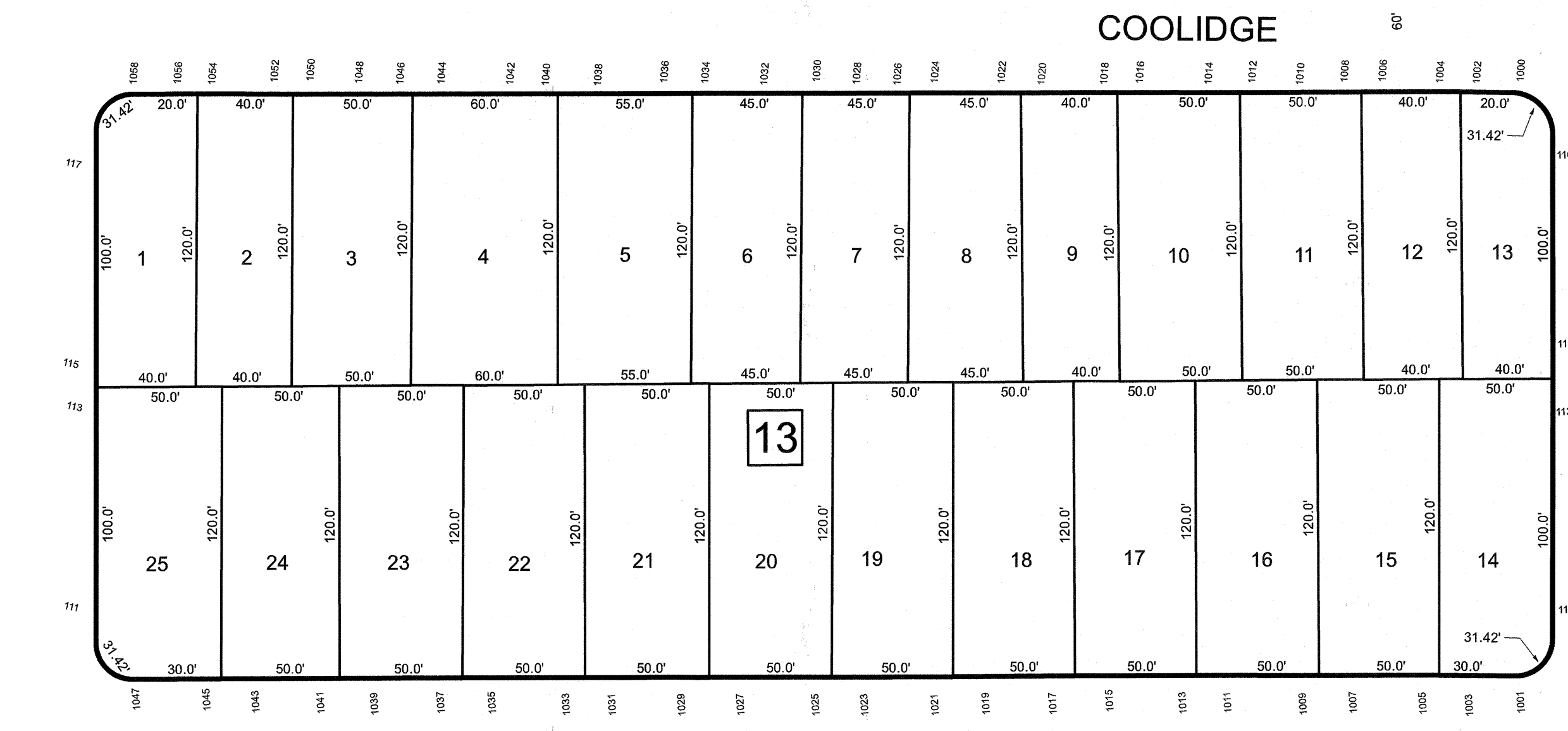
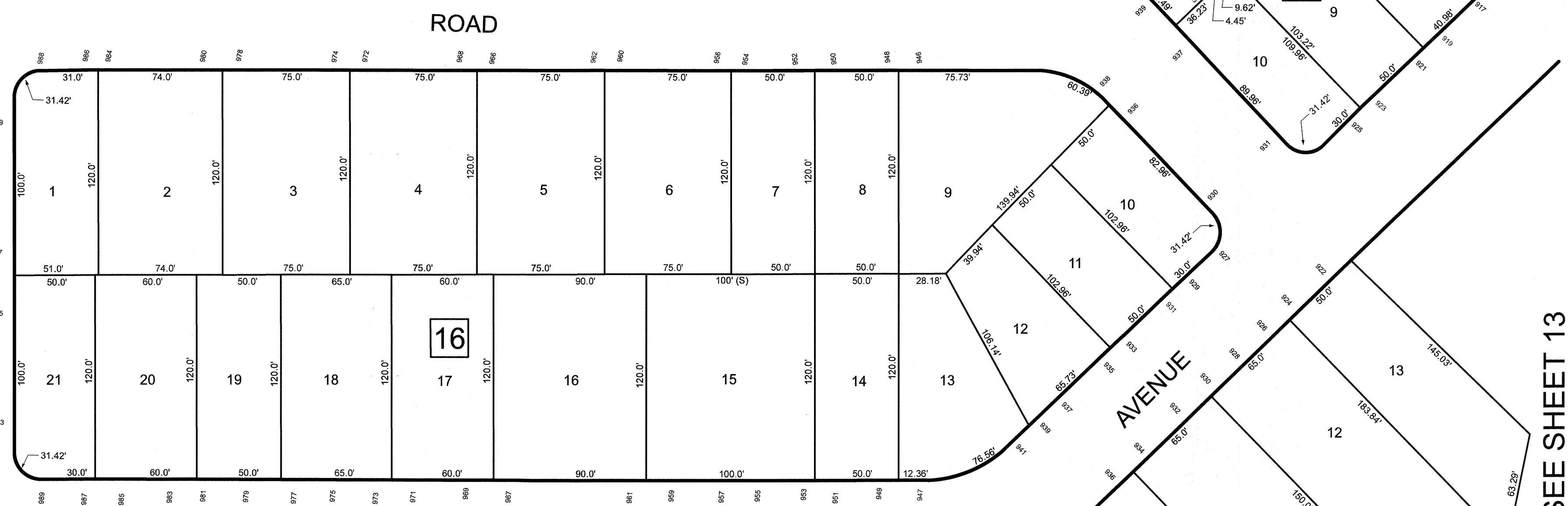
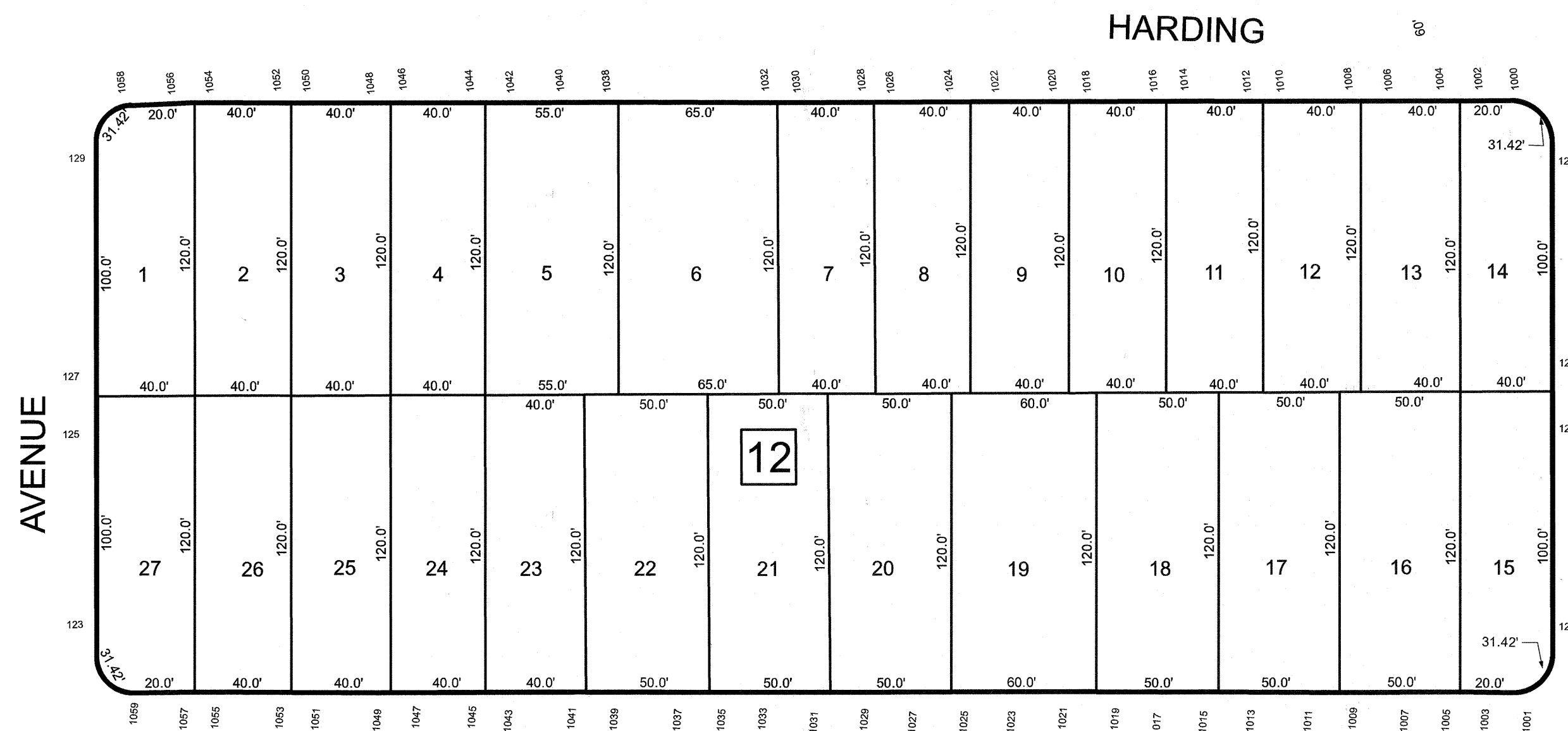


REVISIONS		
DATE	NAME	LIC. NO.



SEE SHEET 2

SEE SHEET 6



GALLOPING HILL ROAD

BOROUGH PARK OF ROSELLE UNION COUNTY

SEE SHEET 4

NEW JERSEY DEPARTMENT OF THE TREASURY  
DIVISION OF TAXATION  
APPROVED AS A TAX MAP PURSUANT TO THE AUTHORITY OF  
N.J.S.A. 54:1-18 AND N.J.S.A. 54:5-1  
FOR THE DIRECTOR, DIVISION OF TAXATION



DATE MAR 31 2022 SERIAL NO. 1129

**TAX MAP**  
**CITY OF ELIZABETH**  
UNION COUNTY NEW JERSEY  
SCALE: 1" = 50' FEB. 15, 2019  
**GLEN J. LLOYD**

N.J. PROFESSIONAL LAND SURVEYOR LIC. #GS037598  
MASER CONSULTING PA  
331 NEWMAN SPRINGS ROAD, SUITE 203  
RED BANK, NJ 07701

THIS MAP HAS BEEN DRAWN USING COMPUTER AIDED DRAFTING/DESIGN (CADD)