

REVISIONS		
DATE	NAME	LIC. NO.

SEE SHEET 16

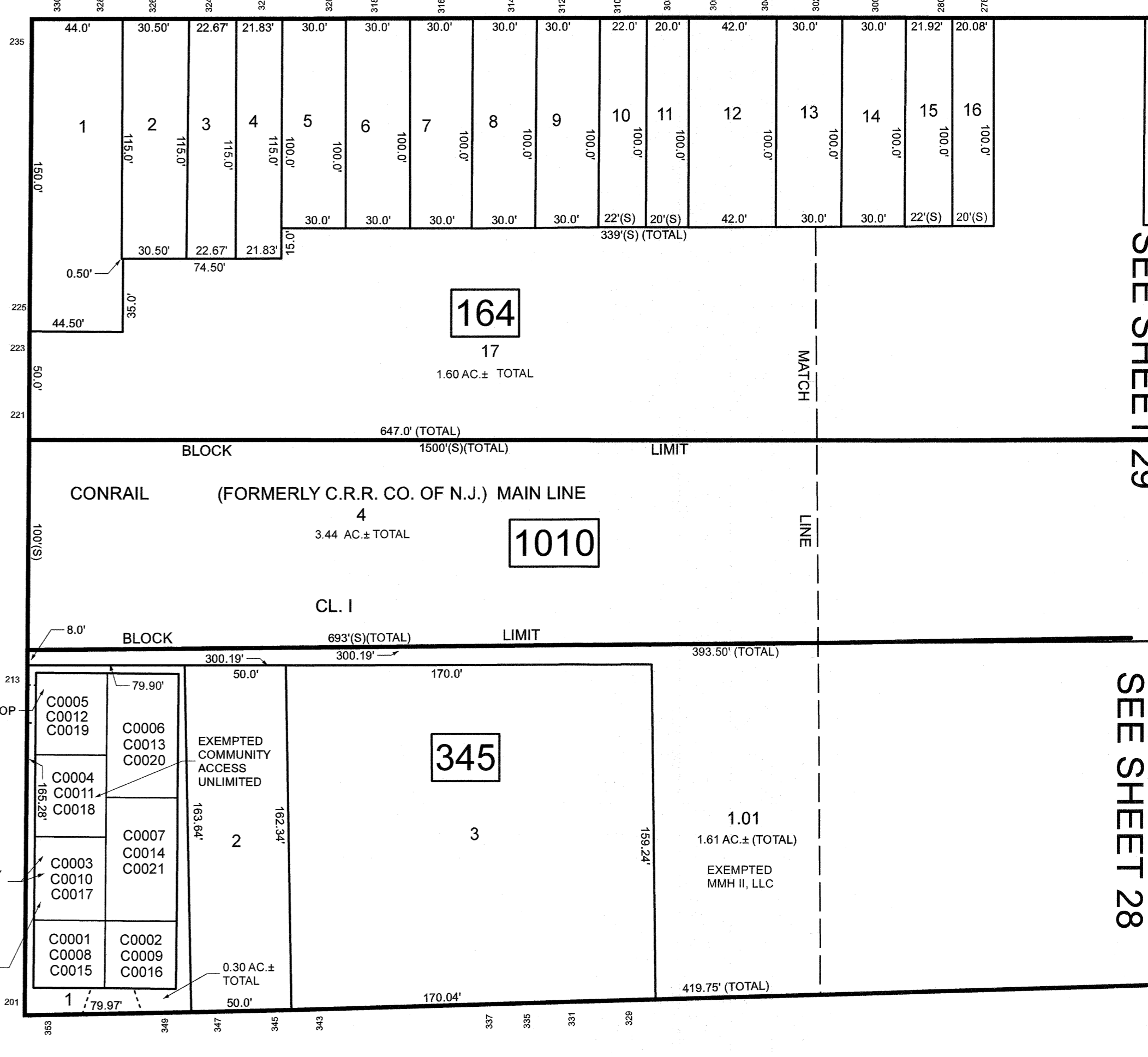
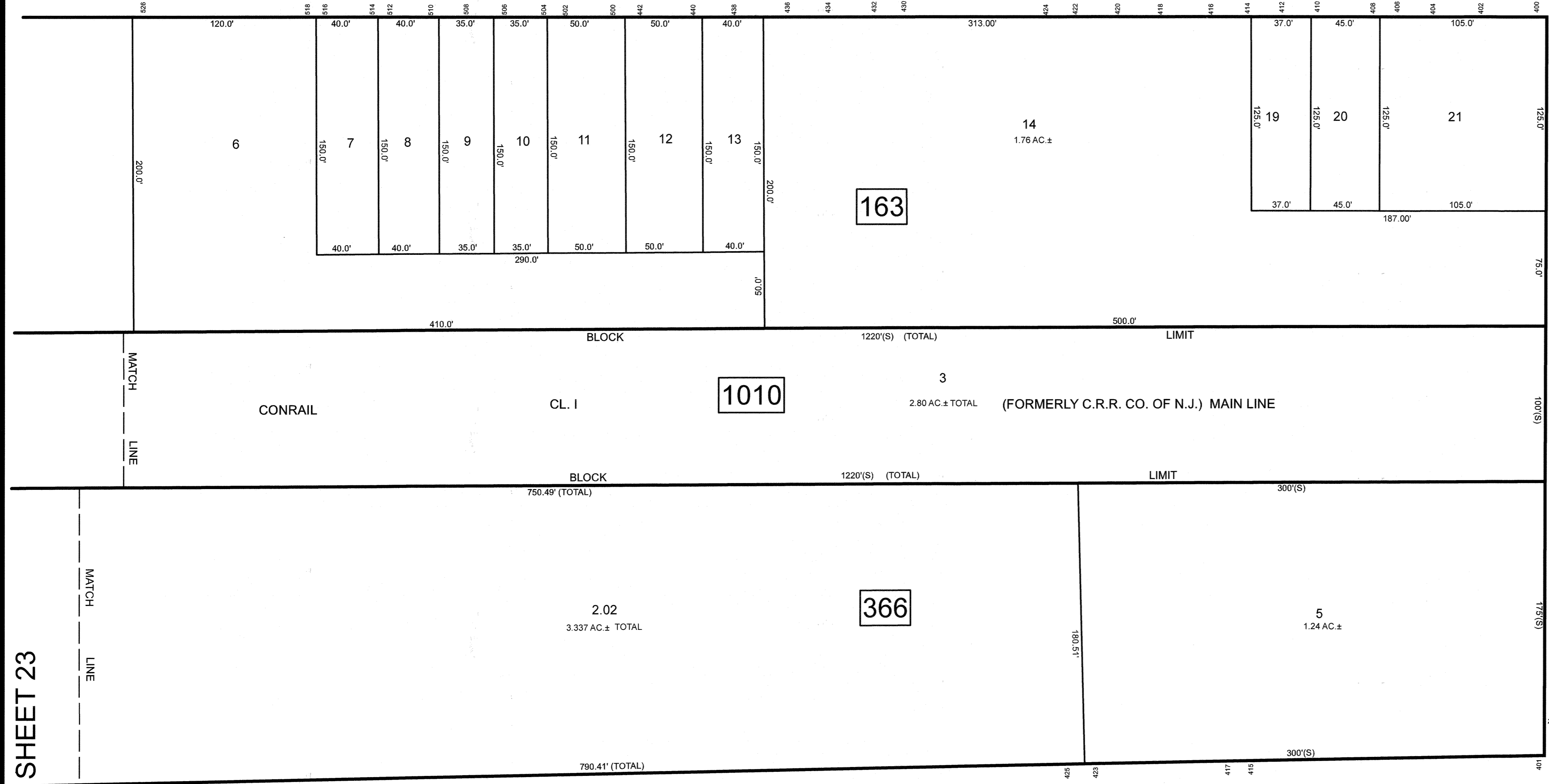
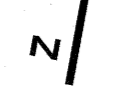
STILES STREET

SEE SHEET 21

MAGIE AVENUE

ORCHARD STREET

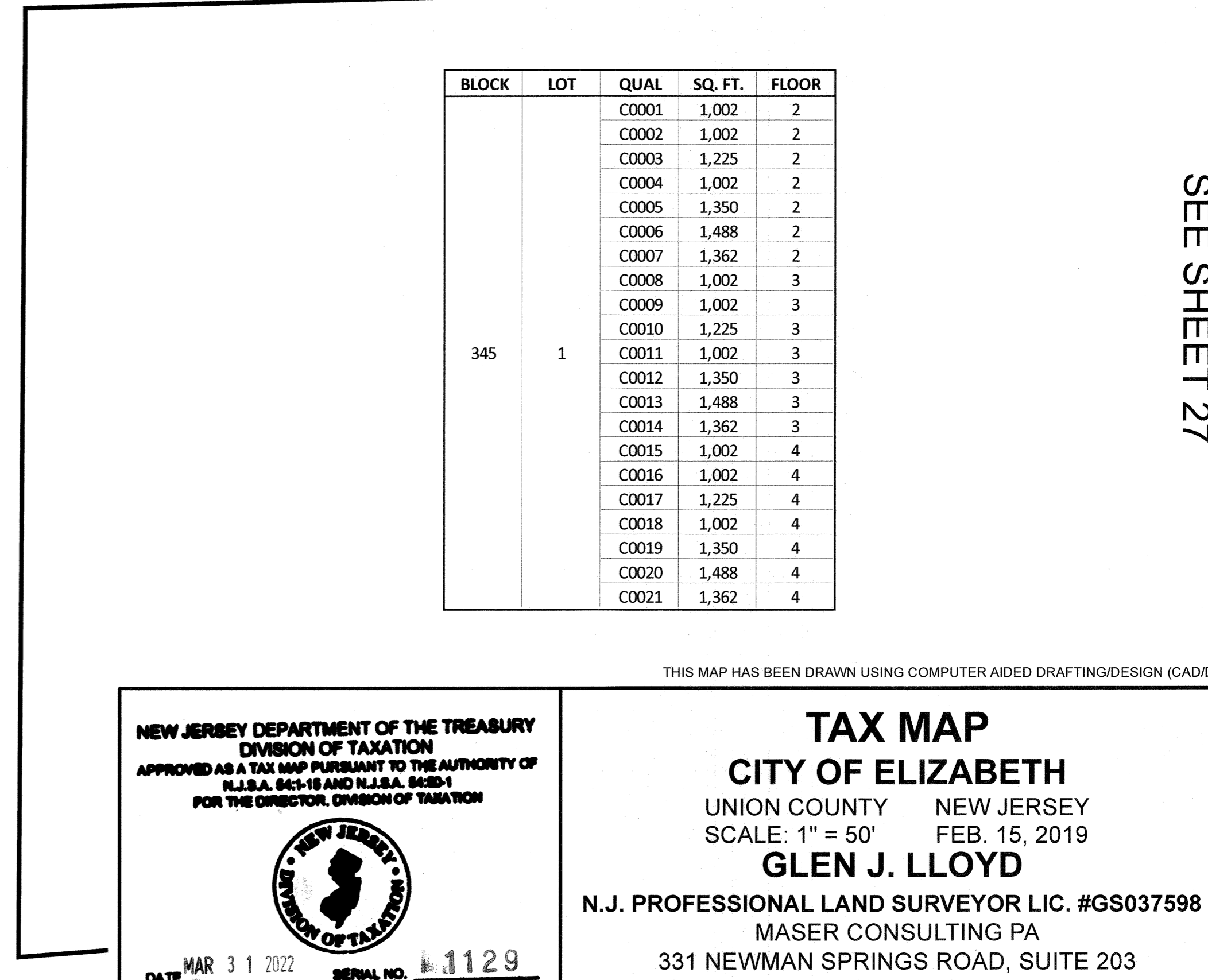
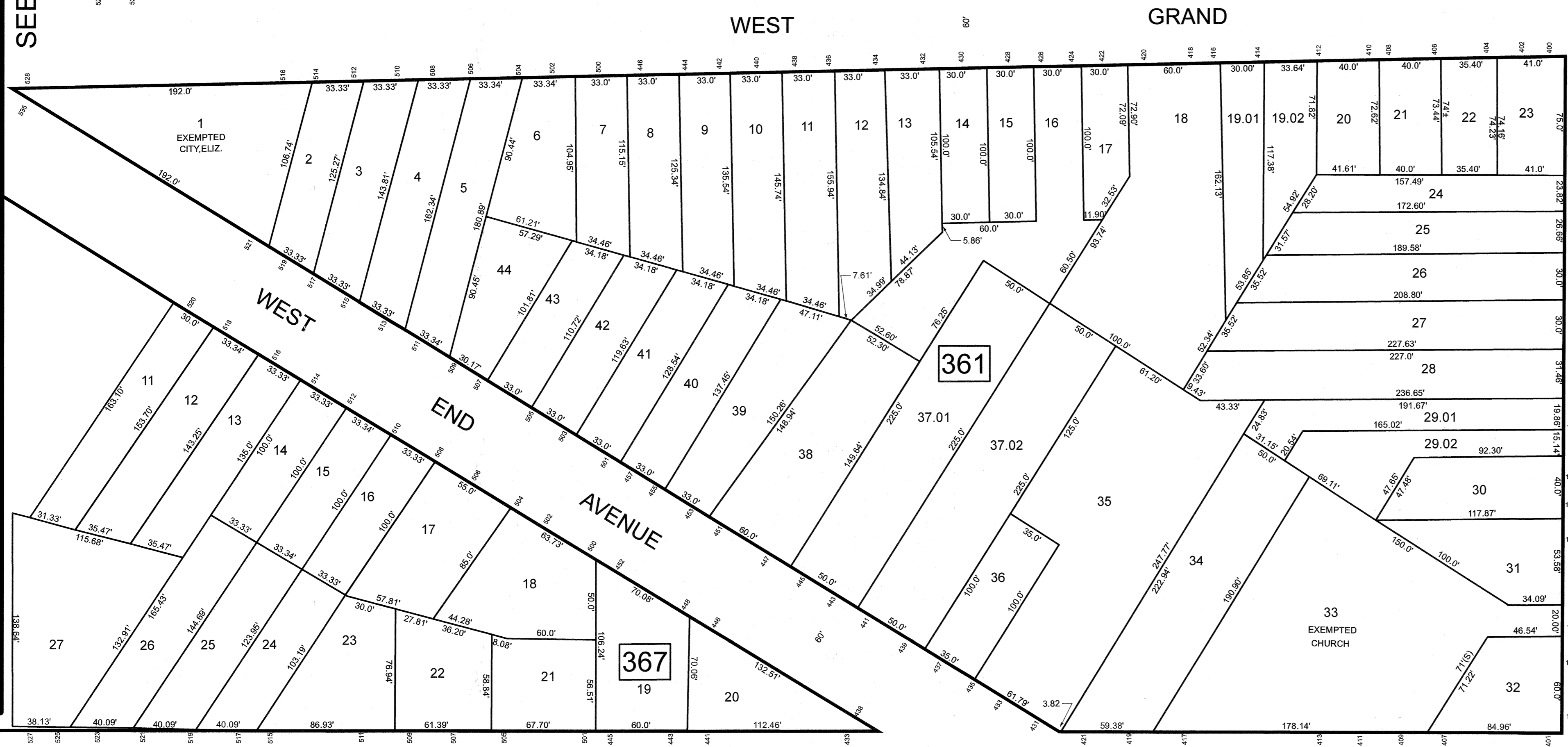
WESTFIELD AVENUE



SEE SHEET 23

SEE SHEET 29

SEE SHEET 28



SEE SHEET 26

SEE SHEET 27

SEE SHEET 27

BLOCK	LOT	QUAL	SQ. FT.	FLOOR
		C0001	1,002	2
		C0002	1,002	2
		C0003	1,225	2
		C0004	1,002	2
		C0005	1,350	2
		C0006	1,488	2
		C0007	1,362	2
		C0008	1,002	3
		C0009	1,002	3
		C0010	1,225	3
		C0011	1,002	3
		C0012	1,350	3
		C0013	1,488	3
		C0014	1,362	3
		C0015	1,002	4
		C0016	1,002	4
		C0017	1,225	4
		C0018	1,002	4
		C0019	1,350	4
		C0020	1,488	4
		C0021	1,362	4

THIS MAP HAS BEEN DRAWN USING COMPUTER AIDED DRAFTING/DESIGN (CADD)

NEW JERSEY DEPARTMENT OF THE TREASURY  
 DIVISION OF TAXATION  
 APPROVED AS A TAX MAP PURSUANT TO THE AUTHORITY OF  
 N.J.S.A. 54:1-15 AND N.J.S.A. 54:25-1  
 FOR THE DIRECTOR, DIVISION OF TAXATION

DATE MAR 31 2022 SERIAL NO. 1129

**TAX MAP**  
**CITY OF ELIZABETH**  
 UNION COUNTY NEW JERSEY  
 SCALE: 1" = 50' FEB. 15, 2019  
**GLEN J. LLOYD**  
 N.J. PROFESSIONAL LAND SURVEYOR LIC. #GS037598  
 MASER CONSULTING PA  
 331 NEWMAN SPRINGS ROAD, SUITE 203  
 RED BANK, NJ 07701