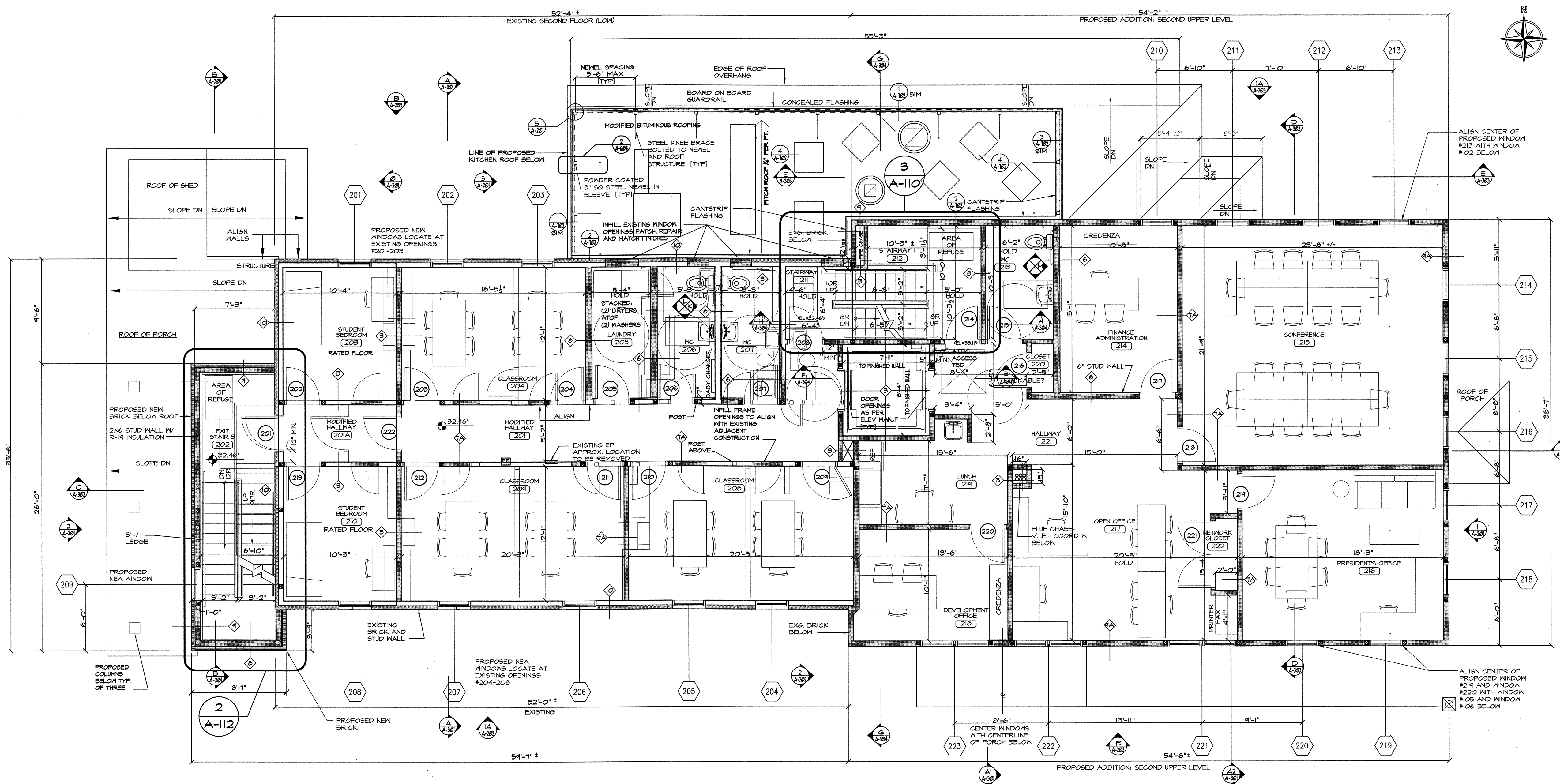




ALTERATIONS & ADDITIONS TO:

**STREETLIGHT MISSION**

424 WESTMINSTER AVE.  
ELIZABETH, NJ 07207  
UNION COUNTY



**PROPOSED SECOND LEVEL COMPOSITE PLAN**

SCALE: 3/16"=1'-0"

**NOTE: THIS DRAWING 3/16" SCALE**

6-9-14 PERMIT DOCS

Rev.	Date	Remarks

COPYRIGHT 2013  
VINCENSTEN ASSOCIATES, LLC

Scale	Date
AS NOTED	6-9-14

Drawn by	Checked
AS/AV	BEV

THIS DRAWING IS INCOMPLETE  
UNLESS USED WITH ALL OTHER  
CONTRACT DOCUMENTS. DO  
NOT SCALE DRAWINGS. NOTIFY  
ARCHITECT OF ANY CONFLICTING  
OR LACKING DIMENSIONS.

Drawing Title

**PROPOSED  
SECOND LEVEL  
COMPOSITE  
PLAN--  
ADMINISTRATION**

Job No.	Dwg. No.
11-071	A-104A

F:\jobs\11-071-Street Light Mission\CURRENT\11-071-Plan 2.dwg, A-104A, 6/6/2014 5:29:57 PM